

**Modulation of E-cadherin expression promotes migration ability of esophageal cancer cells**

**Running title:** Per2 compromises cell-cell junction integrity

Shujun Li<sup>1</sup>, Song Cai<sup>1</sup>, Changbao Zhai<sup>1</sup>, Xuebo Qin<sup>1</sup>, Xiaolu Wang<sup>1</sup>, Helin Zhang<sup>2</sup>

1, Department of Thoracic Surgery, the Second Affiliated Hospital, Hebei Medical University, Shijiazhuang, 050051, China. 2, Hebei Provincial Thoracic Hospital, Shijiazhuang, 050051, China.

**Corresponding author:** Dr. Xiaolu Wang, Department of Thoracic Surgery, the Second Affiliated Hospital, Hebei Medical University, Shijiazhuang, 050051, China. Email: [xiaolurwang@outlook.com](mailto:xiaolurwang@outlook.com).

Full-length pictures of gel graphs



Fig.1C-Per2

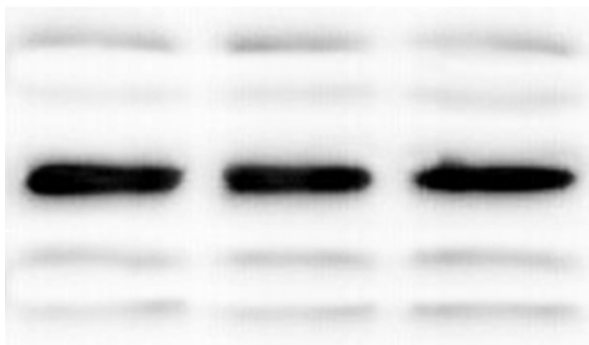


Fig.1C-beta-actin



Fig.3D. EC

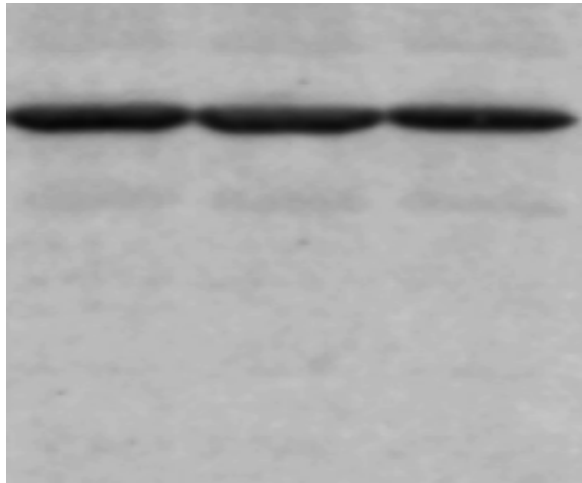


Fig.3D.beta-actin

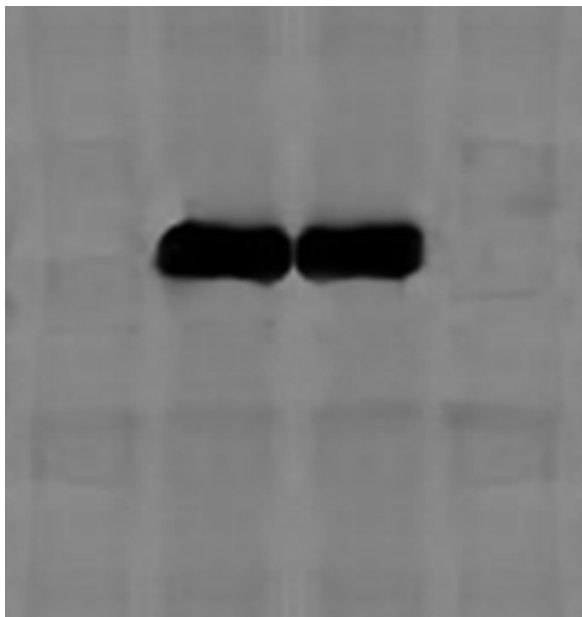


Fig.2A.Per2

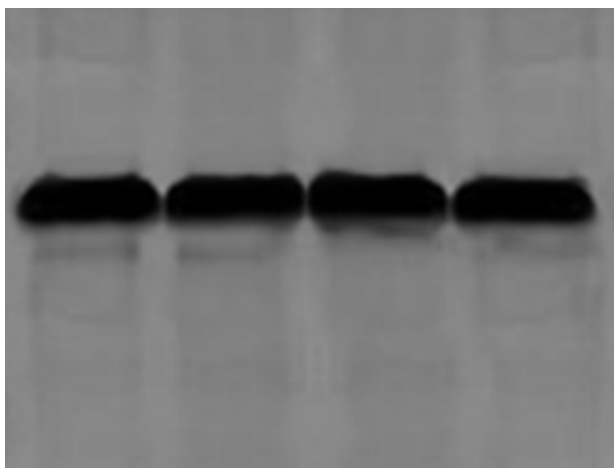


Fig.2A-beta actin

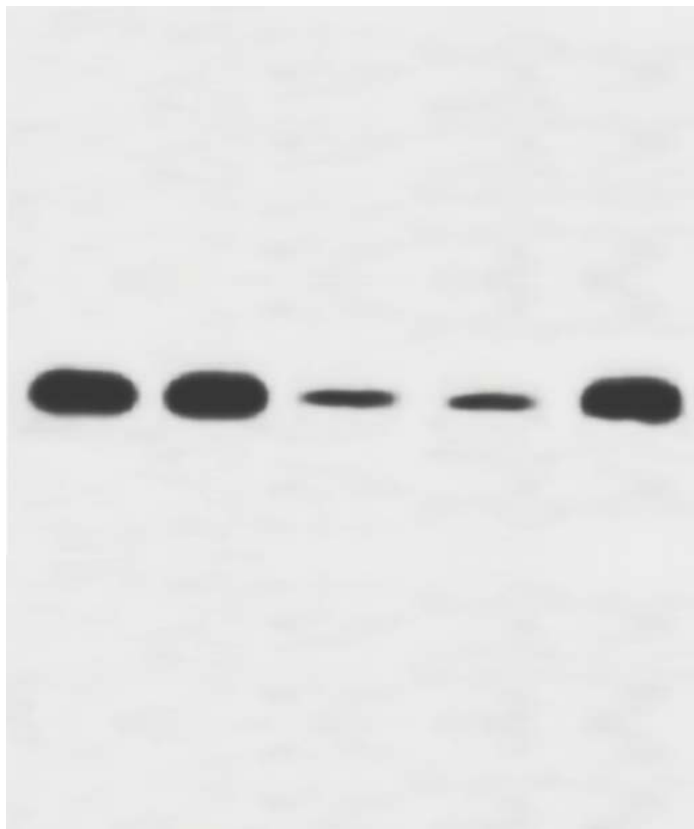


Fig.2C-EC

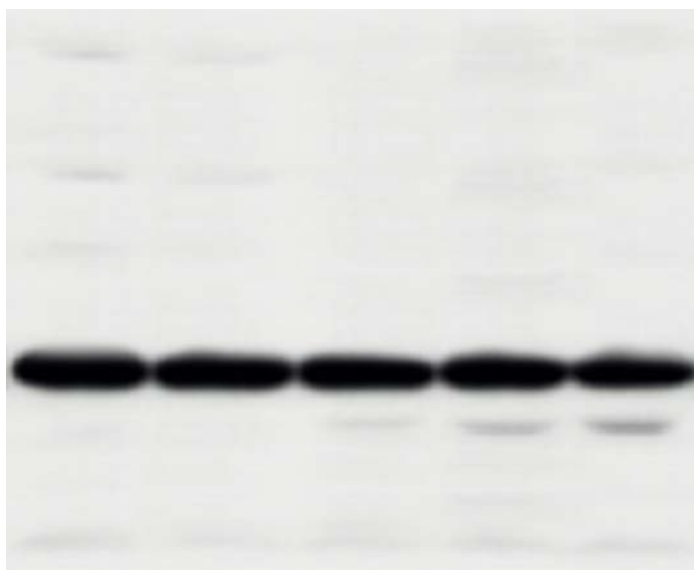


Fig.2C-beta-actin



Fig3. pHDAC1

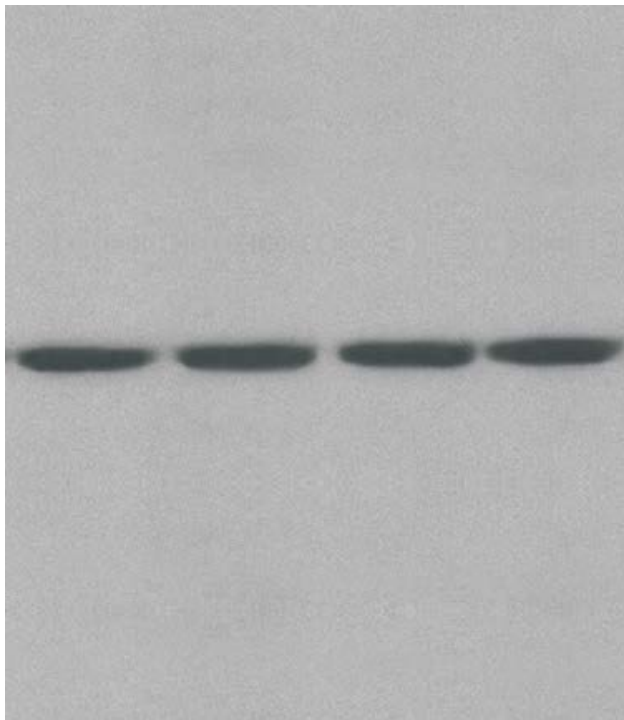


Fig.3. Beta actin

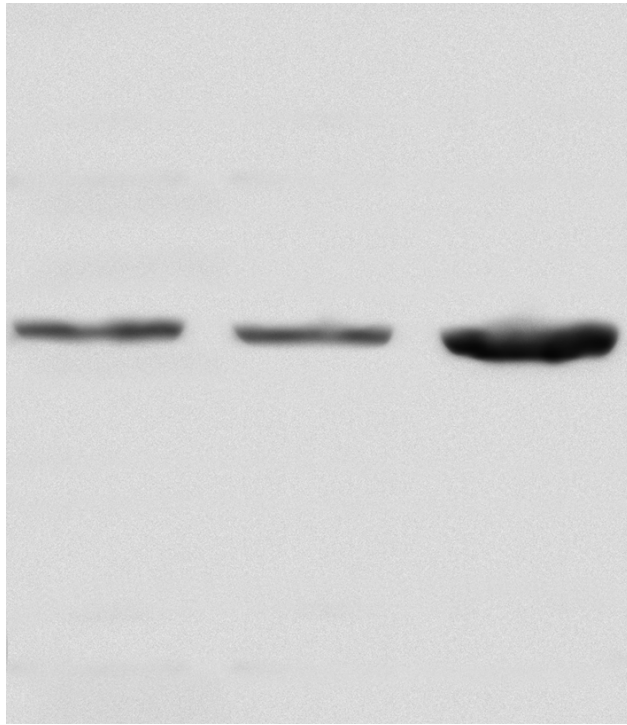


Fig. 3. pHDAC1

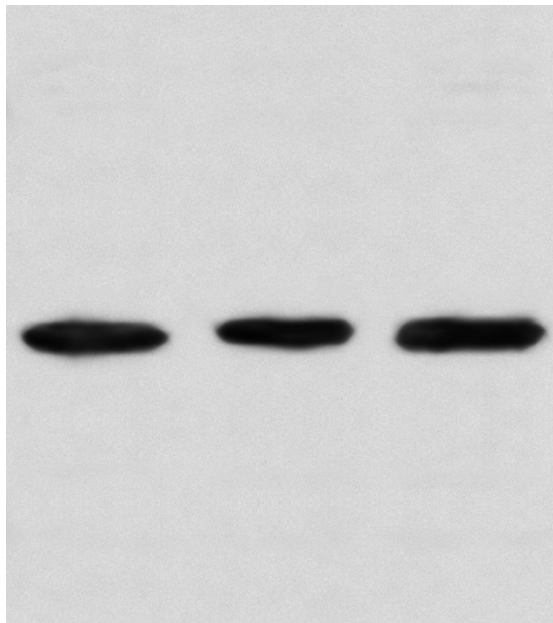


Fig. 3. Beta actin

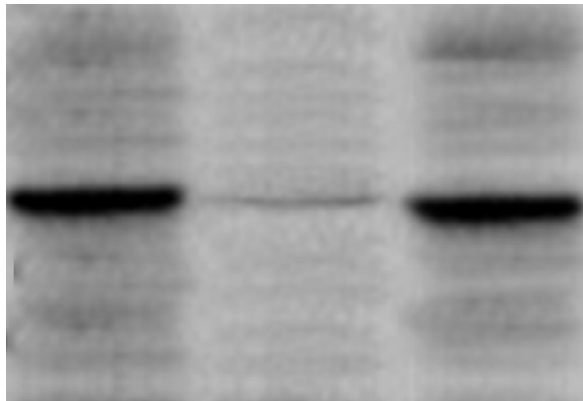


Fig5l-EC

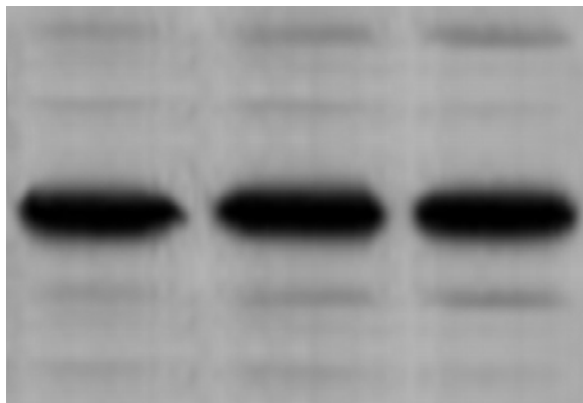


Fig5l-beta-actin