

## **SUPPLEMENTAL MATERIAL**

**TABLE S1.** Population characteristics at study entry

**TABLE S2.** Rate ratios of cancer associated with diabetes, hypertension and hypercholesterolemia by calendar year intervals

**FIGURE S1.** Rate ratios of cancer associated with diabetes, hypertension and hypercholesterolemia according to duration of metabolic disorder

**FIGURE S2.** Rate ratios of subtypes of cancer associated with diabetes, hypertension and hypercholesterolemia according to duration of metabolic disorder

**TABLE S1: The study population at study entry**

<b>Variable</b>	<b>Men</b>	<b>Women</b>	<b>Total</b>
Population, <i>n</i> (%)	2,401,193 (49.8)	2,424,949 (50.2)	4,826,142 (100)
Age (mean years) (SD)	40.3 (18.1)	42.4 (19.6)	41.4 (18.9)
Follow-up (mean years) (SD)	12.6 (5.8)	12.6 (5.7)	12.6 (5.7)
Diabetes, <i>n</i> (%)	34,548 (1.4)	31,142 (1.3)	65,690 (1.4)
Hypertension, <i>n</i> (%)	64,378 (2.7)	89,238 (3.7)	153,616 (3.2)
Dyslipidemia (statins), <i>n</i> (%)	8,928 (0.4)	6,095 (0.3)	15,023 (0.3)

**TABLE S2A.** IRRs (95%CI) of all-site cancer in women according to duration of each metabolic disorder and calendar year, and adjusted for age\*

	<b>1996-1999</b>	<b>2000-2003</b>	<b>2004-2007</b>	<b>2008-2012</b>
<b>Duration of diabetes</b>				
<b>No diabetes</b>	(ref.)	(ref.)	(ref.)	(ref.)
<b>0-&lt;9 mths</b>	1.49 (1.30-1.70)	1.64 (1.45-1.85)	1.56 (1.40-1.75)	1.53 (1.40-1.67)
<b>9 mths–1.5 years</b>	1.15 (1.00-1.32)	1.26 (1.13-1.41)	1.29 (1.17-1.42)	1.16 (1.07-1.26)
<b>&gt;1.5 years</b>	0.94 (0.79-1.12)	1.13 (1.06-1.21)	1.16 (1.10-1.22)	1.17 (1.13-1.21)
<b>Prevalent at study entry</b>	1.14 (1.08-1.20)	1.04 (0.98-1.10)	1.08 (1.01-1.16)	1.01 (0.93-1.09)
<b>Duration of hypertension</b>				
<b>No hypertension</b>	(ref.)	(ref.)	(ref.)	(ref.)
<b>0-&lt;9 mths</b>	1.10 (1.03-1.17)	1.09 (1.03-1.15)	1.19 (1.13-1.25)	1.28 (1.22-1.35)
<b>9 mths–1.5 years</b>	1.08 (1.02-1.14)	1.02 (0.97-1.07)	1.00 (0.96-1.05)	1.07 (1.02-1.11)
<b>&gt;1.5 years</b>	0.95 (0.89-1.02)	1.06 (1.03-1.09)	1.05 (1.02-1.07)	1.11 (1.09-1.13)
<b>Prevalent at study entry</b>	1.06 (1.03-1.10)	1.06 (1.03-1.10)	1.07 (1.03-1.11)	1.14 (1.09-1.18)
<b>Duration of hypercholesterolemia</b>				
<b>No hyper-cholesterolemia</b>	(ref.)	(ref.)	(ref.)	(ref.)
<b>0-&lt;9 mths</b>	0.87 (0.73-1.03)	0.88 (0.80-0.97)	0.88 (0.83-0.94)	0.98 (0.93-1.03)
<b>9 mths–1.5 years</b>	0.94 (0.81-1.11)	0.82 (0.75-0.90)	0.92 (0.87-0.96)	0.98 (0.94-1.02)
<b>&gt;1.5 years</b>	0.85 (0.69-1.03)	1.00 (0.95-1.07)	0.96 (0.93-0.99)	0.97 (0.95-0.99)
<b>Prevalent at study entry</b>	0.99 (0.88-1.11)	0.94 (0.84-1.06)	1.03 (0.92-1.16)	0.95 (0.84-1.07)

\*All results arise from the same model.

IRR, incidence rate ratio; mths, months; 95%CI, 95% confidence interval; ref., reference

**TABLE S2B.** IRRs (95%CI) of all-site cancer in men according to duration of each metabolic disorder and calendar year intervals, and adjusted for age\*

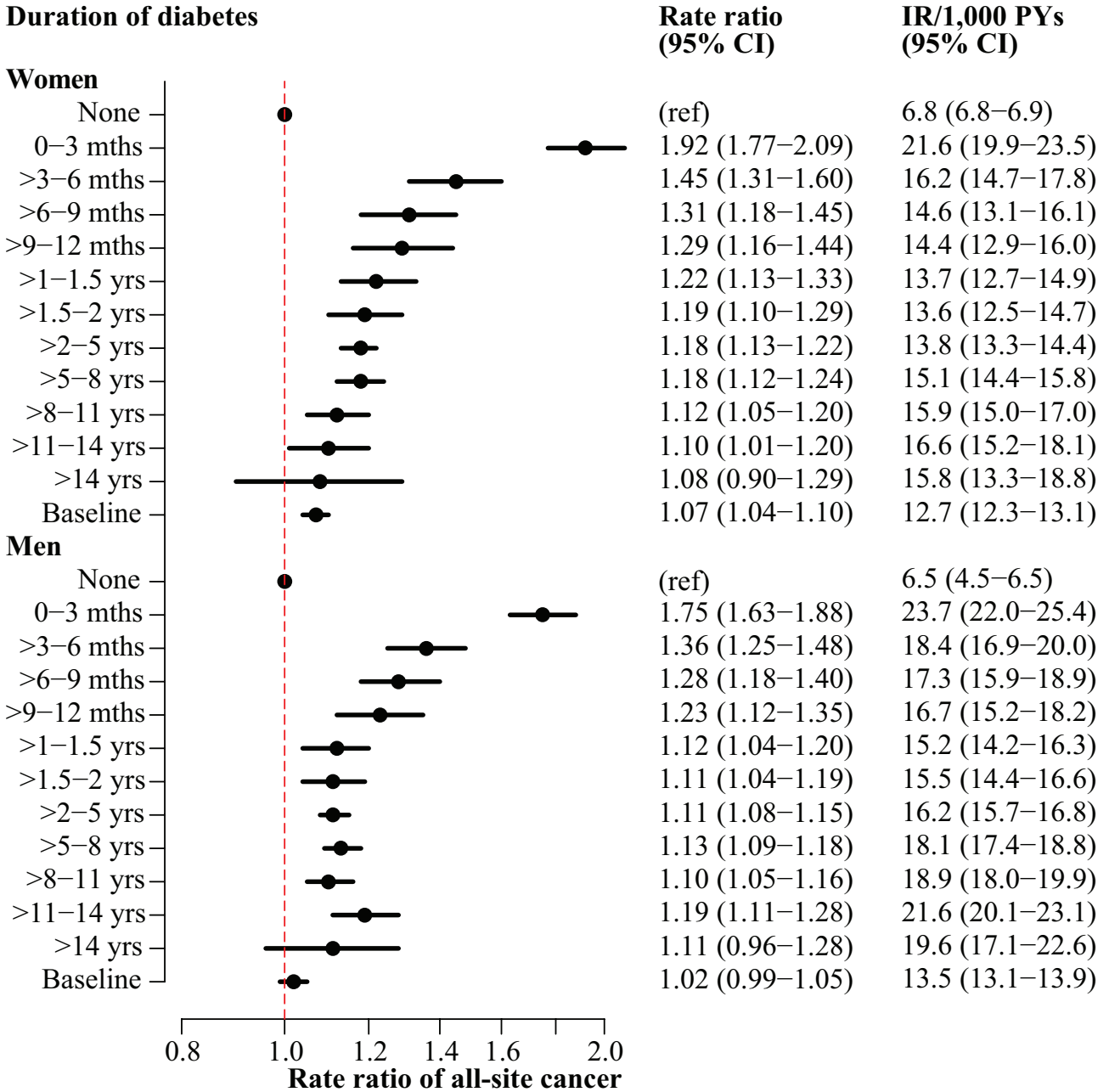
	<b>1996-1999</b>	<b>2000-2003</b>	<b>2004-2007</b>	<b>2008-2012</b>
<b>Duration of diabetes</b>				
<b>No diabetes</b>	(ref.)	(ref.)	(ref.)	(ref.)
<b>0-&lt;9 mths</b>	1.40 (1.24-1.58)	1.66 (1.50-1.84)	1.50 (1.37-1.64)	1.34 (1.24-1.44)
<b>9 mths–1.5 years</b>	1.05 (0.93-1.19)	1.11 (1.00-1.22)	1.13 (1.03-1.22)	1.14 (1.06-1.22)
<b>&gt;1.5 years</b>	1.34 (1.17-1.52)	1.15 (1.08-1.21)	1.11 (1.06-1.15)	1.09 (1.06-1.12)
<b>Prevalent at study entry</b>	1.10 (1.05-1.16)	1.05 (0.99-1.11)	0.94 (0.88-1.01)	0.92 (0.86-0.99)
<b>Duration of hypertension</b>				
<b>No hypertension</b>	(ref.)	(ref.)	(ref.)	(ref.)
<b>0-&lt;9 mths</b>	1.30 (1.22-1.37)	1.32 (1.26-1.40)	1.31 (1.25-1.37)	1.38 (1.31-1.44)
<b>9 mths–1.5 years</b>	1.08 (1.02-1.14)	1.04 (0.99-1.09)	1.08 (1.04-1.13)	1.11 (1.06-1.15)
<b>&gt;1.5 years</b>	1.14 (1.06-1.21)	1.07 (1.04-1.10)	1.11 (1.08-1.13)	1.14 (1.11-1.16)
<b>Prevalent at study entry</b>	1.08 (1.04-1.12)	1.08 (1.04-1.12)	1.12 (1.07-1.16)	1.21 (1.16-1.26)
<b>Duration of hypercholesterolemia</b>				
<b>No hyper-cholesterolemia</b>	(ref.)	(ref.)	(ref.)	(ref.)
<b>0-&lt;9 mths</b>	0.78 (0.66-0.91)	0.85 (0.78-0.93)	0.93 (0.88-0.98)	0.96 (0.91-1.01)
<b>9 mths–1.5 years</b>	1.00 (0.87-1.14)	0.87 (0.80-0.94)	0.92 (0.88-0.96)	1.00 (0.96-1.04)
<b>&gt;1.5 years</b>	0.76 (0.63-0.91)	0.88 (0.84-0.93)	0.95 (0.92-0.98)	0.96 (0.94-0.98)
<b>Prevalent at study entry</b>	0.75 (0.67-0.85)	0.92 (0.84-1.01)	0.92 (0.84-1.01)	0.90 (0.82-0.99)

\*All results arise from the same model.

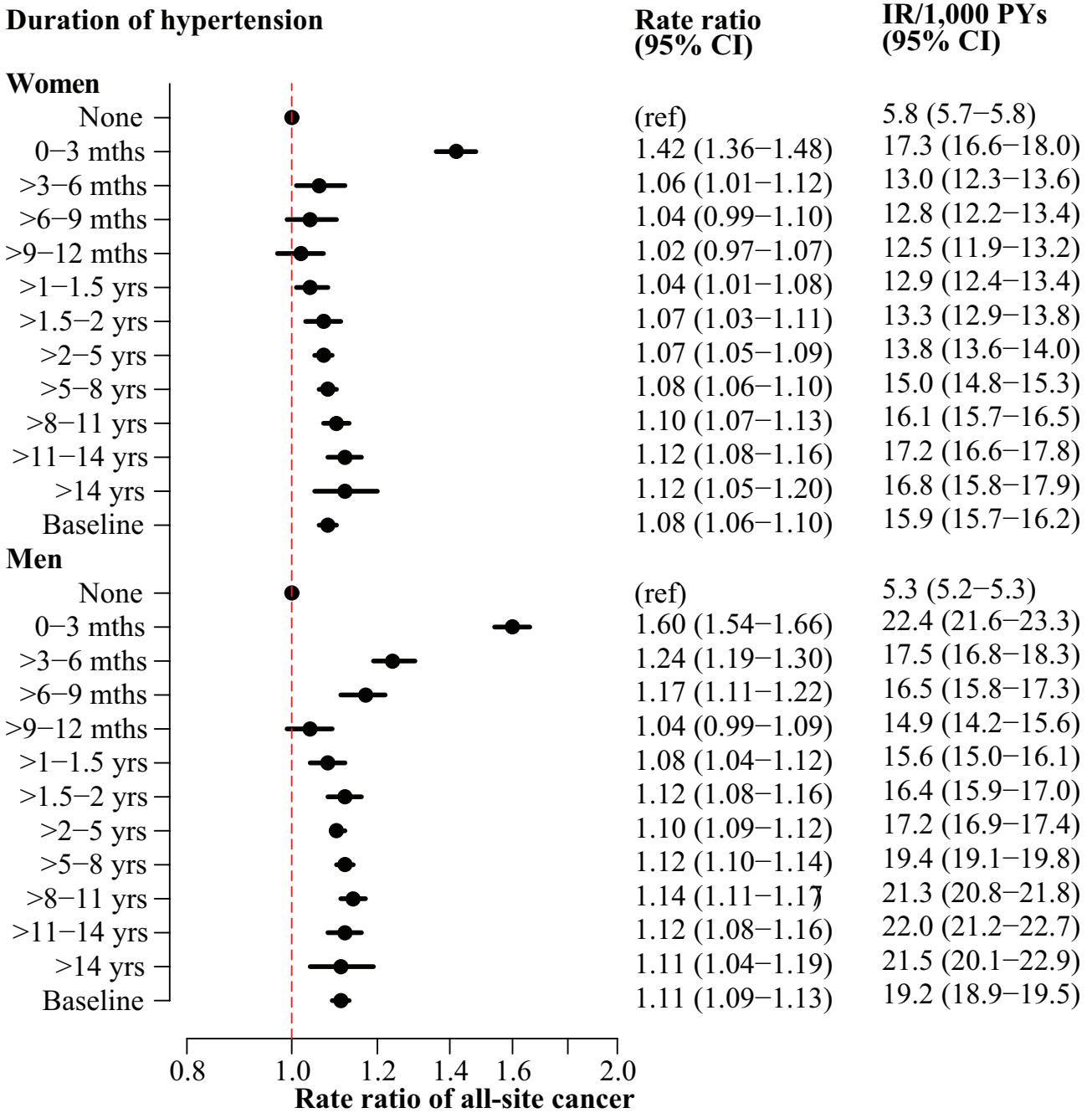
IRR, incidence rate ratio; mths, months; 95%CI, 95% confidence interval; ref., reference

**FIGURE S1.** Rate ratios of cancer associated with A) diabetes, B) hypertension and C) hypercholesterolemia according to duration of metabolic disorder, stratified by sex and adjusted for age.

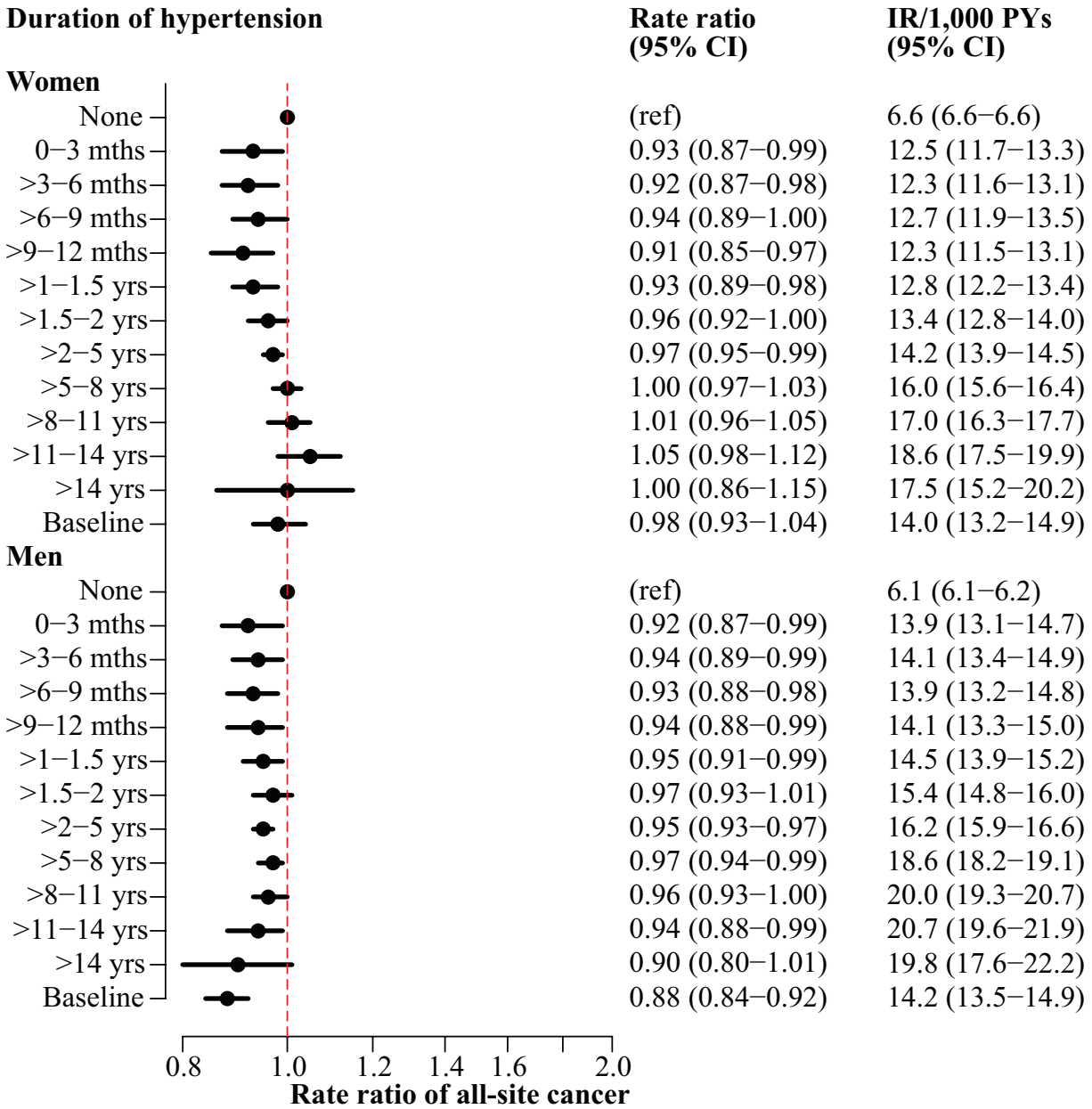
**A) Rate ratios of cancer according to duration of diabetes**



### B) Rate ratios of cancer according to duration of hypertension

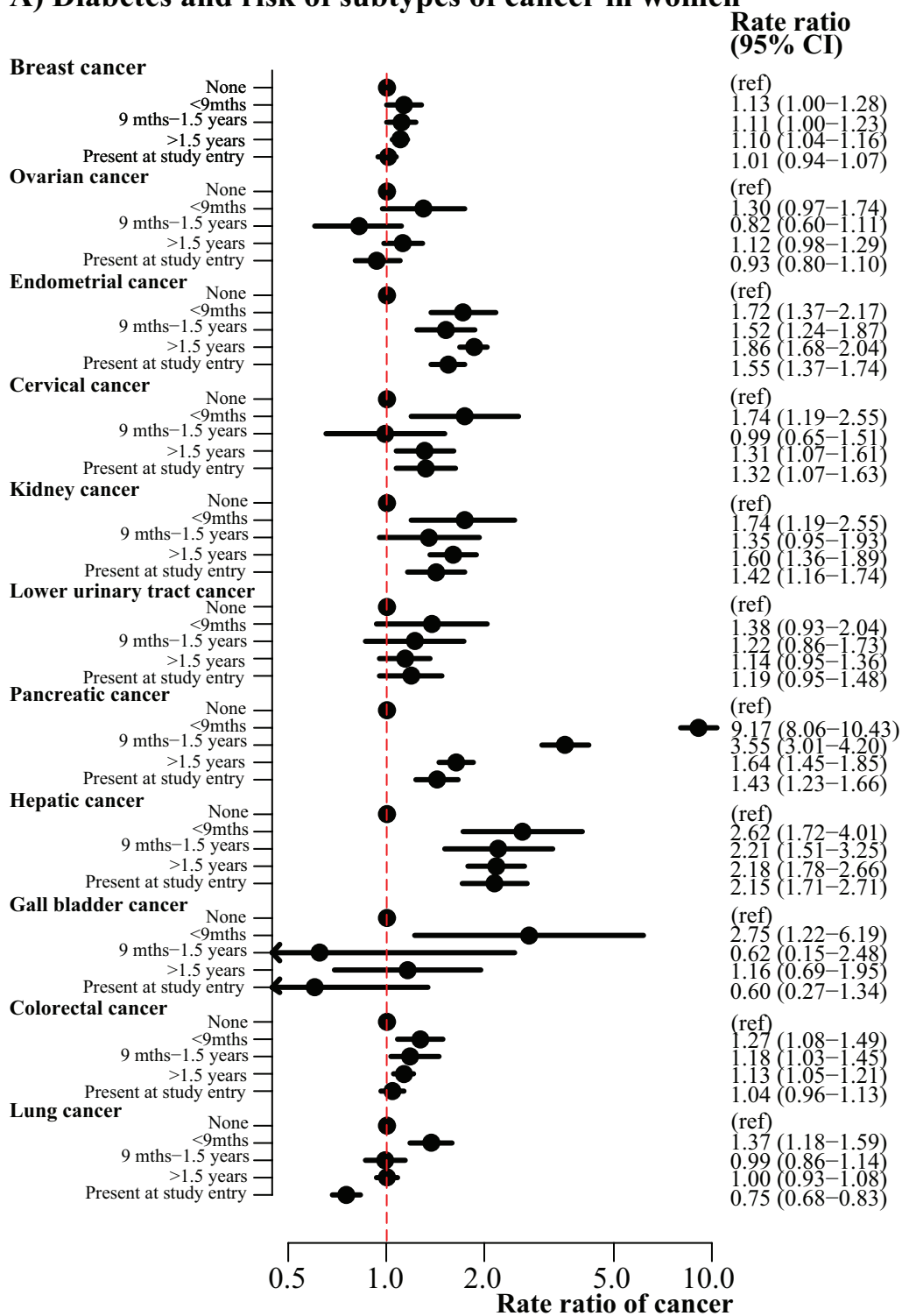


**C) Rate ratios of cancer according to duration of hypercholesterolemia**



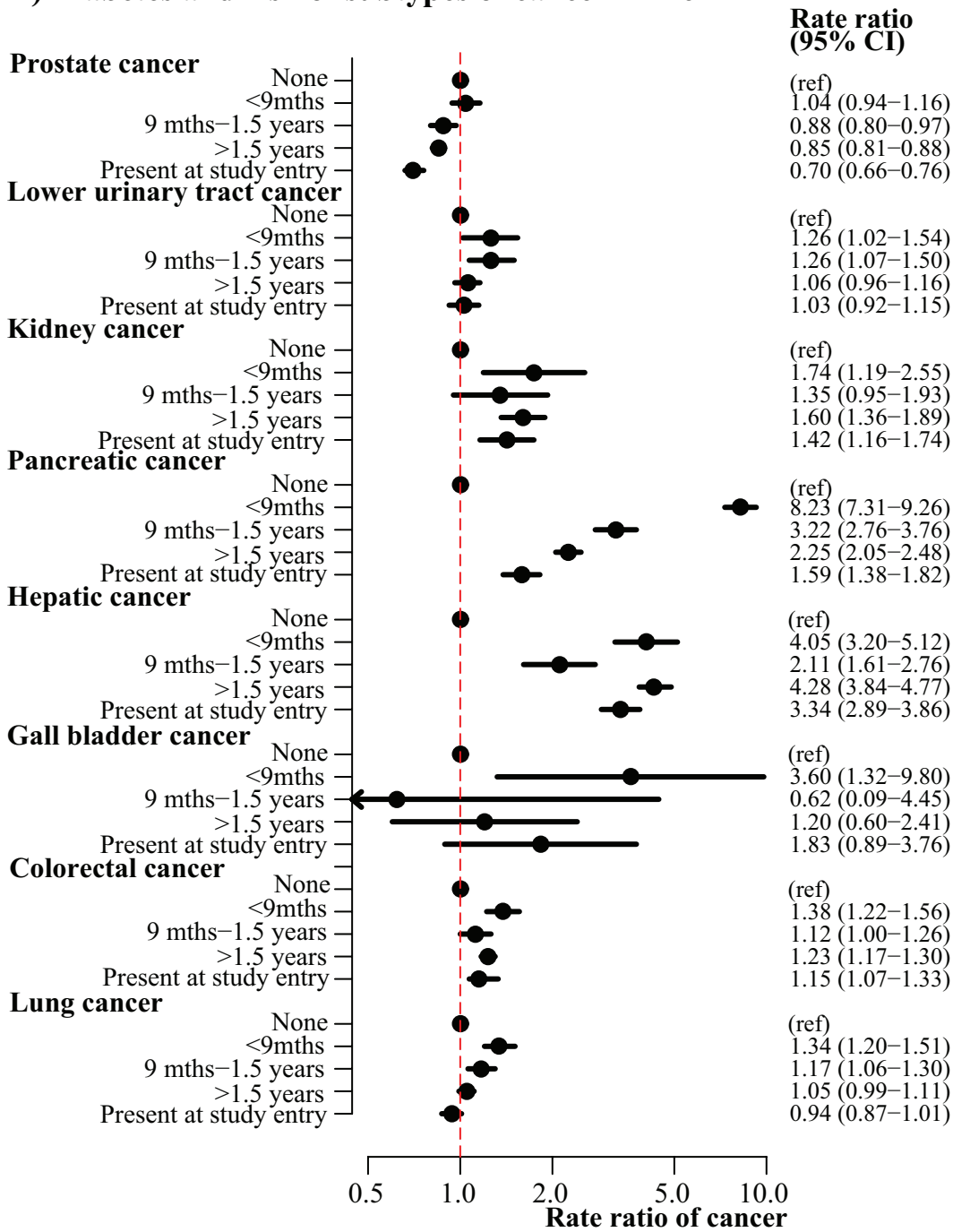
**FIGURE S2.** Rate ratios of subtypes of cancer associated with diabetes, hypertension and hypercholesterolemia according to duration of metabolic disorder

**A) Diabetes and risk of subtypes of cancer in women**

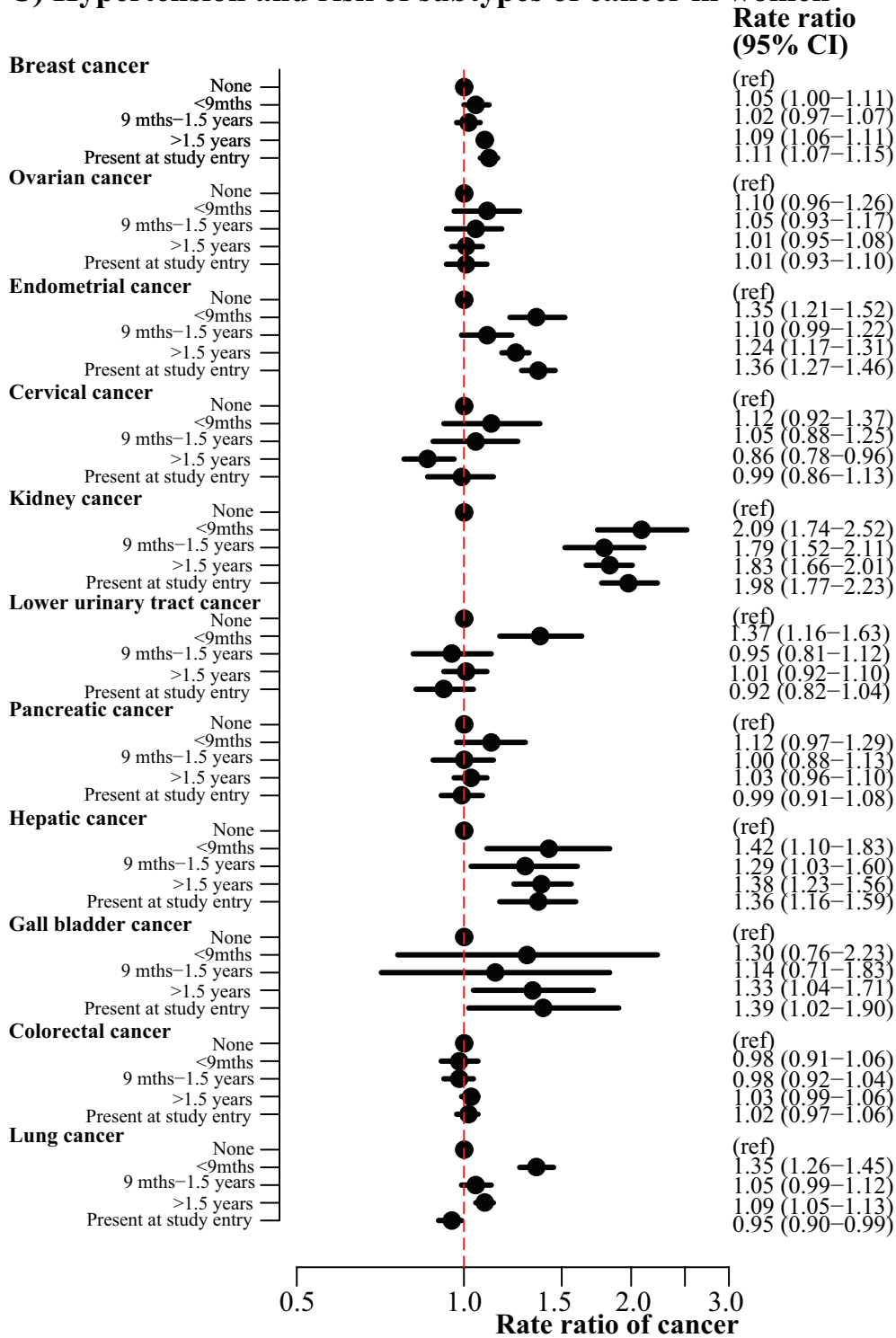




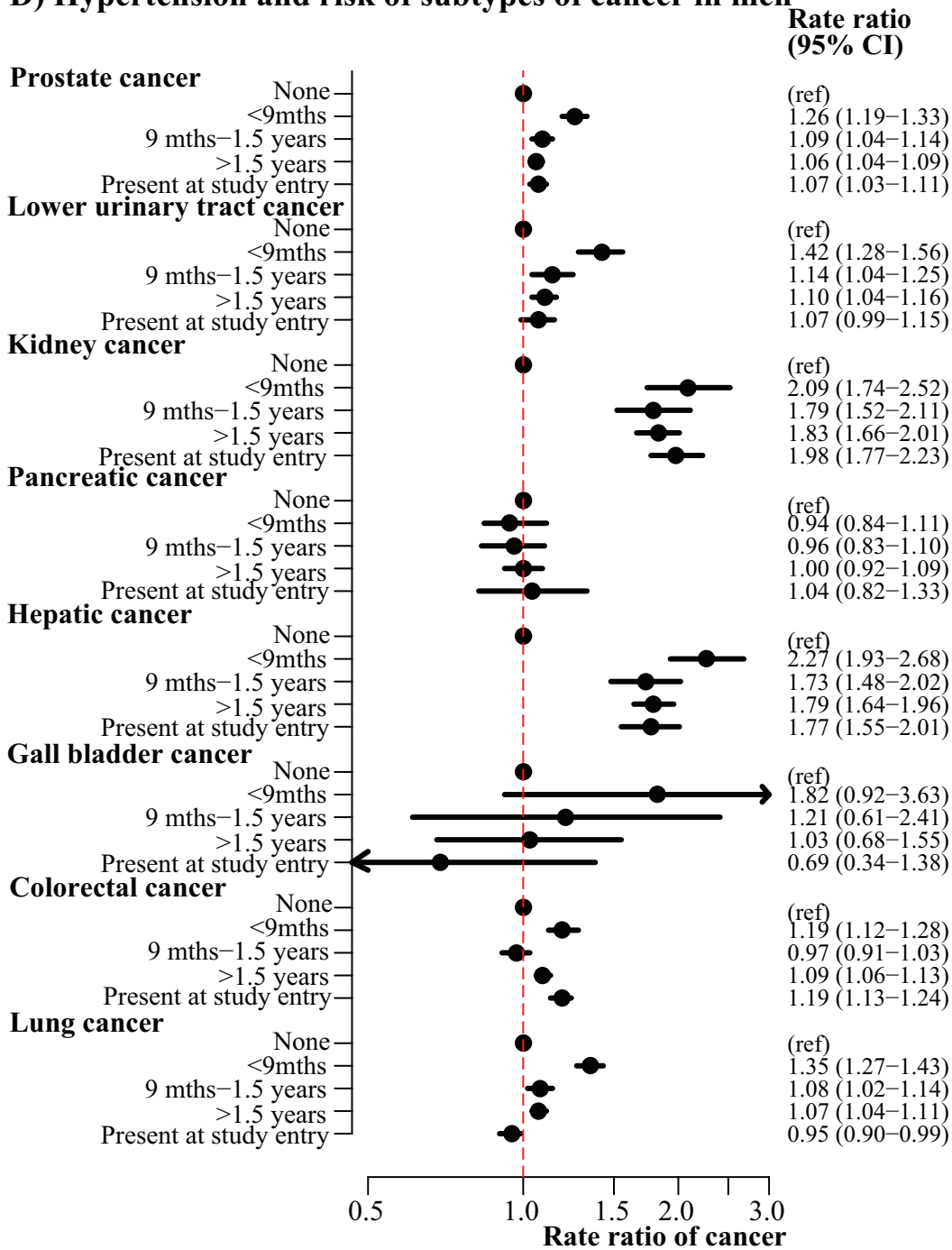
**B) Diabetes and risk of subtypes of cancer in men**



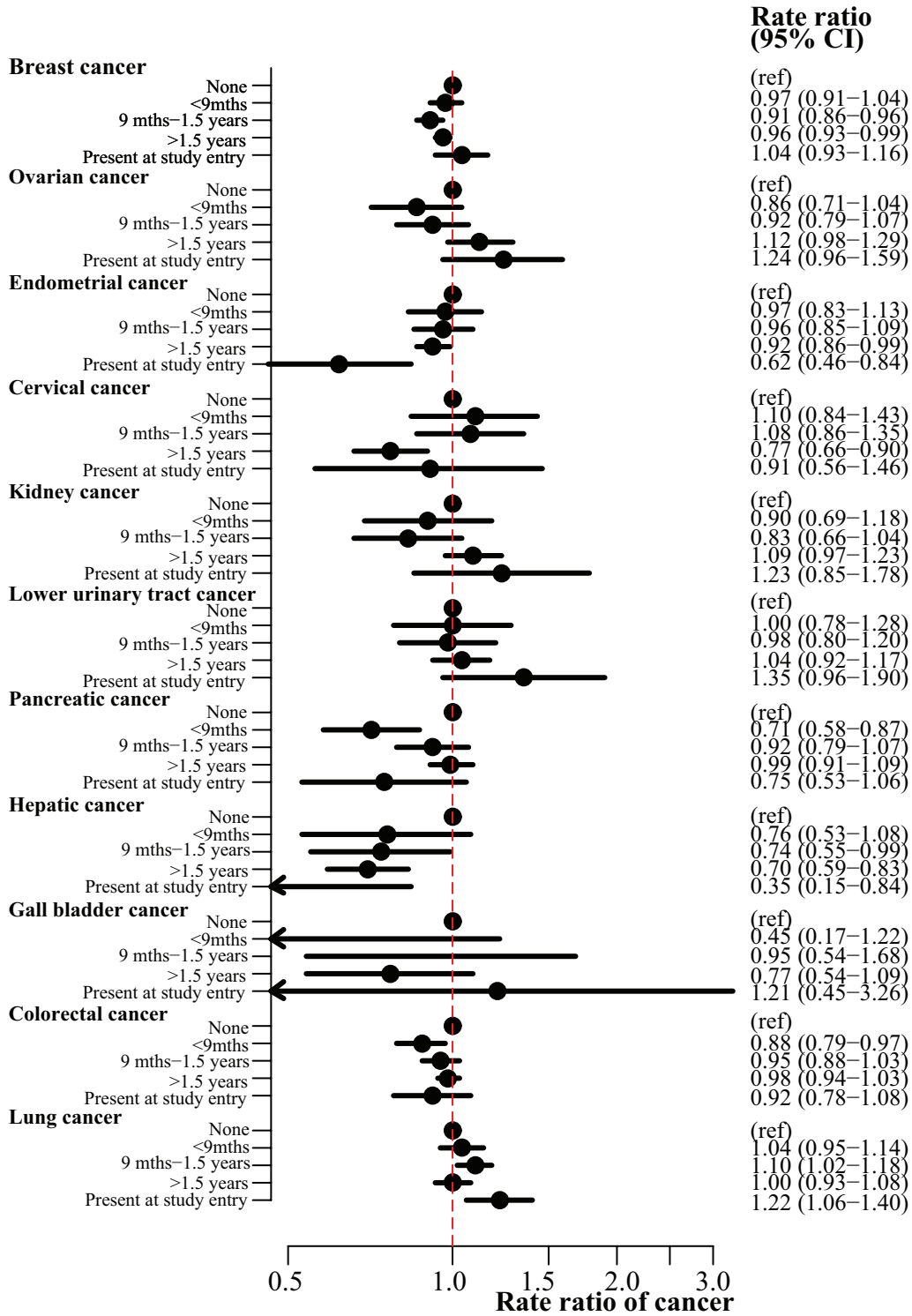
**C) Hypertension and risk of subtypes of cancer in women**



**D) Hypertension and risk of subtypes of cancer in men**



**E) Hypercholesterolemia and risk of subtypes of cancer in women**



**F) Hypercholesterolemia and risk of subtypes of cancer in men**

