

Supporting Information:

Supplemental Figures:

Supplemental Figure S1. Different expressed proteins in Wengfeng07 and Union85140 identified by 2-D MS/MS under salinity stress (at time points T0 and T4). SDS-PAGE gels were stained with Coomassie Brilliant Blue; A and B, 2-D maps of root proteome of Wengfeng07 at time points T0 and T4, respectively; C and D, 2-D maps of root proteome of Union85140 at time points T0 and T4, respectively. This is a biological replicate to Figure 5.

Supplementary Figure S2. Statistics of phosphopeptides and phosphoproteins identified in three biological replicates. A. quantitative phosphopeptides identified in three biological replicates. B. phosphoproteins identified in three biological replicates.

Supplemental Tables:

Supplemental Table S1. LC-MS-MS based shotgun proteomic analysis for Wengfeng07.

Supplemental Table S2. LC-MS-MS based shotgun proteomic analysis for Union85140.

Supplemental Table S3. Primer list for Real-time PCR.

Supplemental Table S4. Summary of quantitative phosphopeptides.

Supplemental Table S5. Summary of phosphoproteins with quantitative phosphopeptides.

Supplemental raw data (MultiConsensus). The annotated, mass labeled spectra for all modified peptides.

FIG. S1

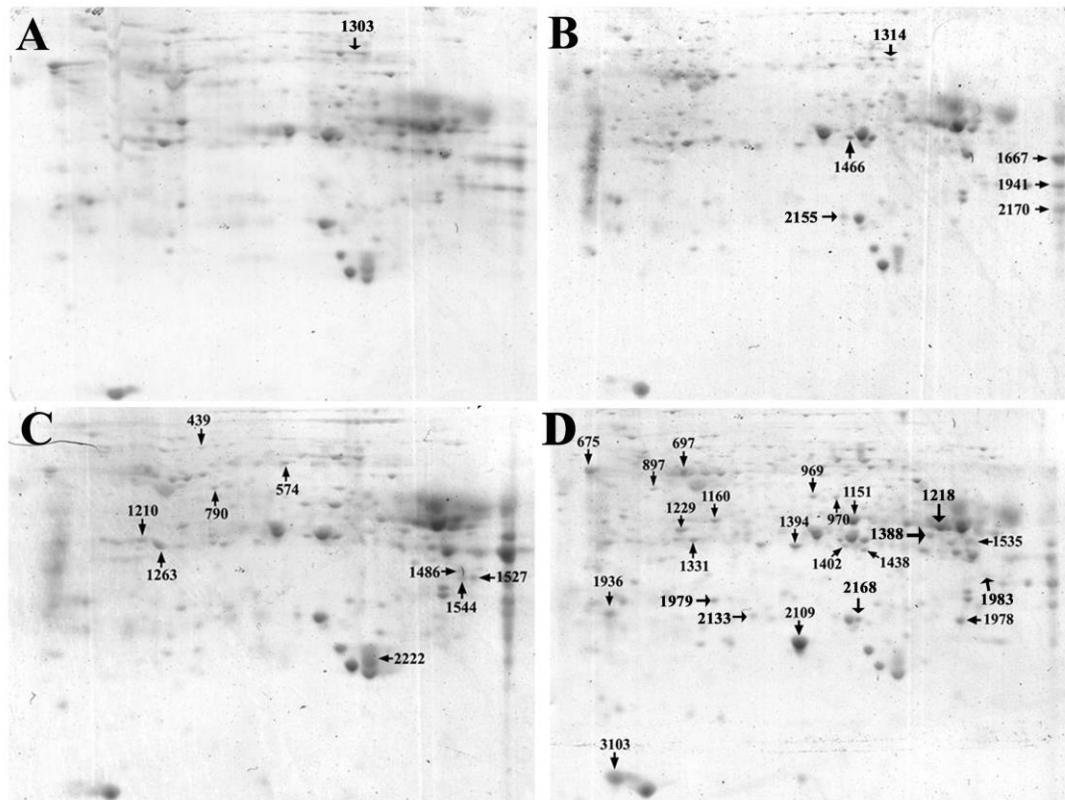


FIG. S2

