

## SUPPLEMENTARY INFORMATION

### Antibodies

The listed antibodies were used in the following applications.

Antibody	Catalogue number	Company	Applications
CK14	PRB-155P	Covance	IF
CK8	Troma-I	DSHB	IF
Pan-Cytokeratin	ab6401	abcam	IF
GFP	RL600-101-215	Rockland	IF
GFP	A11122	Invitrogen	WB
Slug	9585	Cell Signaling Technology	IF, WB, ChIP
Snail	ab85931	abcam	ChIP
Snail	3895	Cell Signaling Technology	IF (tissue sections)
Snail	4719	Cell Signaling Technology	IF (cultured cells)
Snail	3879	Cell Signaling Technology	WB
EpCAM	17-5791-82	Ebioscience	FC and FACS
EpCAM	12-5791-82	Ebioscience	FC and FACS
E-Cad	3195	Cell Signaling Technology	IF and WB
E-Cad	610181	BD Biosciences	IF and WB
Zeb1	Sc-25388	Santa Cruz	IF and WB
N-Cad	610920	BD Biosciences	WB
Vim	5741	Cell Signaling Technology	WB
Fsp1	A5114	Dako	WB
$\beta$ -tubulin	2128	Cell Signaling Technology	WB
$\beta$ -actin	4970	Cell Signaling Technology	WB
CD49f	313617	Biolegend	FC and FACS
CD24	17-0242-80	Ebioscience	FC and FACS
CD45	13-04	Ebioscience	FC and FACS
CD31	13-0311	Ebioscience	FC and FACS
Ter119	13-5921	Ebioscience	FC and FACS
Streptavidin eFluor450	48-4317-82	Ebioscience	FC and FACS

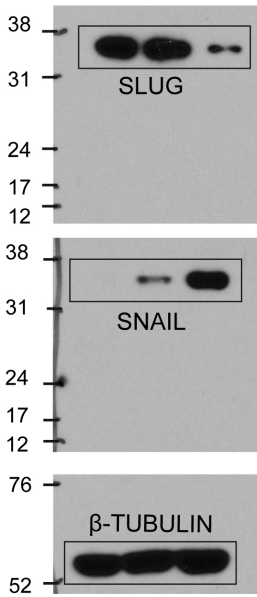
### qPCR primers

The following primers were used in quantitative PCR for measuring gene expression relative to  $\beta$ -actin.

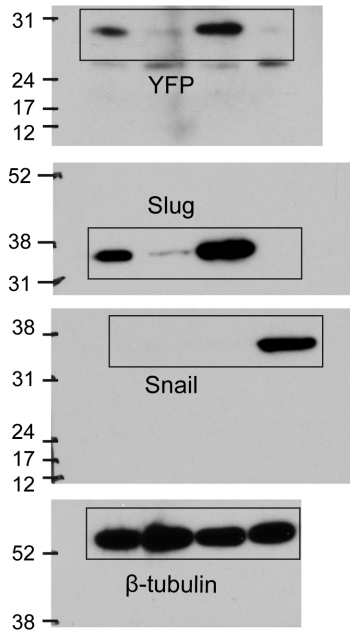
Gene	Forward	Reverse
b-actin	CCACTGCCGCATCCTCTTCCT	CACACAGAGTACTTGCGCTCAGG
E-cadherin	GTATCGGATTTGGAGGGACAC	ATGATATGAGGCTGTGGGTTT
N-cadherin	TGACATAGACCCAAACGCC	GACAACTTTTACACGCAGG
Vim	CTGCACGATGAAGAGATCCAG	ACTCGTTTGACTCCTGCTTG
FN	CTTTGGCAGTGGTCATTTTCAG	ATTCTCCCTTTCCATTCCCG
Slug	CTCACCTCGGGAGCATAACAG	GACTTACACGCCCCAAGGATG
Snail	CACACGCTGCCTTGTGTCT	GGTCAGCAAAGCACGGTT
Zeb1	GTTCTGCCAACAGTTGGTTT	GCTCAAGACTGTAGTTGATG
Twist	CTGCCCTCGGACAAGCTGAG	CTAGTGGGACGCGGACATGG

Supplementary Figure - Uncropped scans with size marker indications

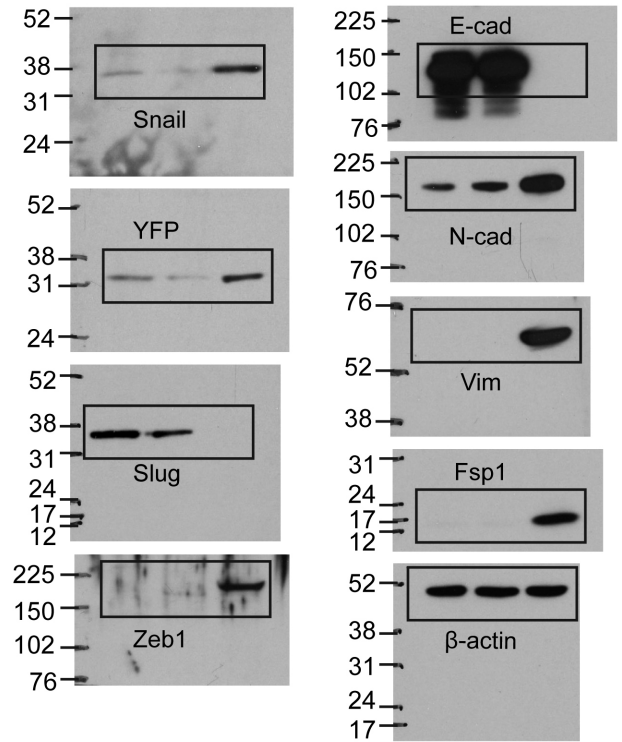
Ext Data Fig. 5c



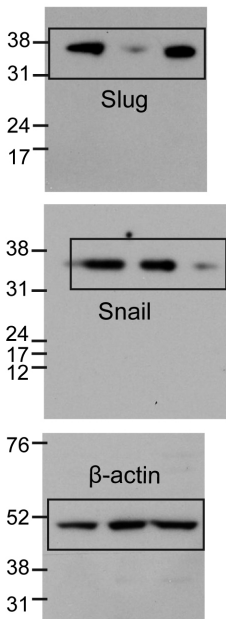
Ext Data Fig. 6h



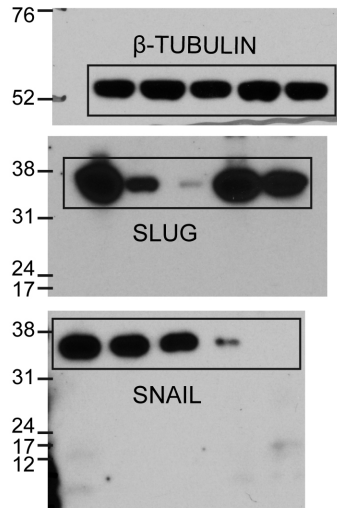
Ext Data Fig. 6f



Ext Data Fig. 9b



Ext Data Fig. 9c



Ext Data Fig. 10a

