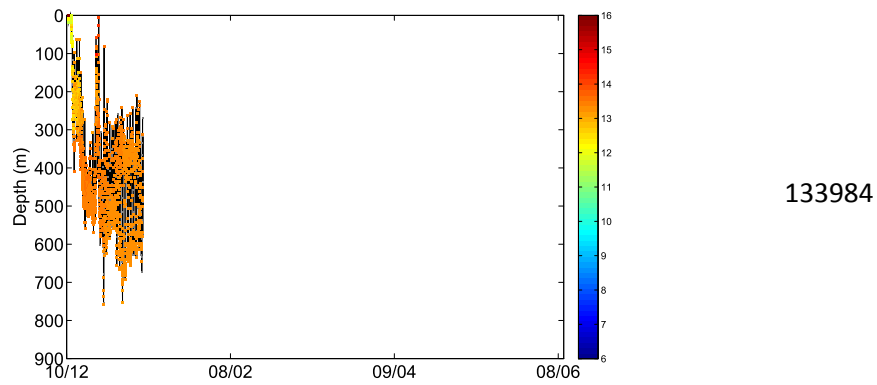


Supplementary information

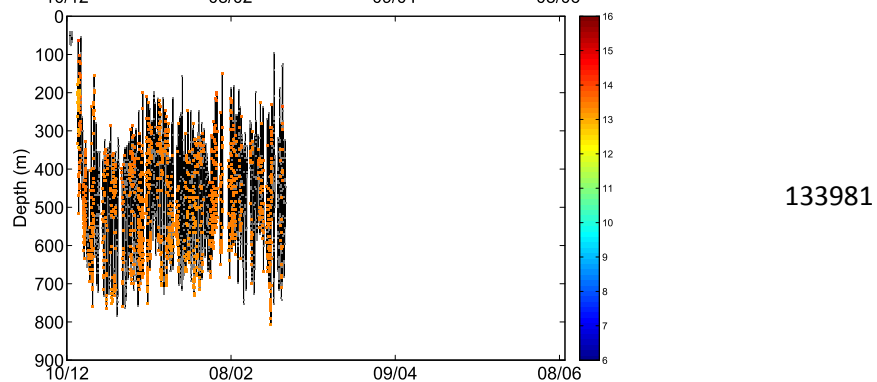
First evidence of European eels exiting the Mediterranean Sea during their spawning migration

Elsa Amilhat^{1,2*}, Kim Aarestrup³, Elisabeth Faliex^{1,2}, Gaël Simon^{1,2}, Håkan Westerberg⁴, and David Righton⁵

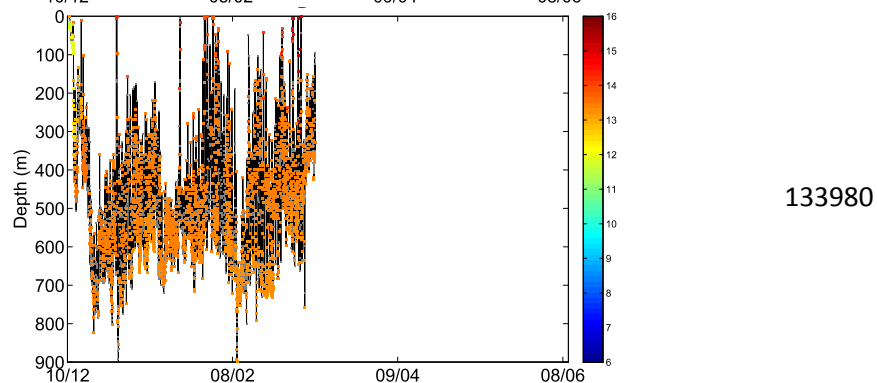
Supplementary Figure S1: Time-series (depth in m and temperature in °C) transmitted by tags deployed on European eels in the Mediterranean. Plots show depth data coloured by temperature. Grey points indicate depth measurements transmitted without a concurrent temperature record.



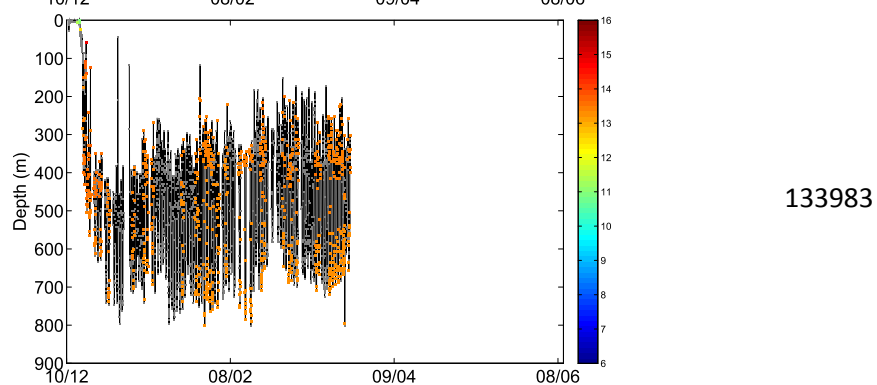
133984



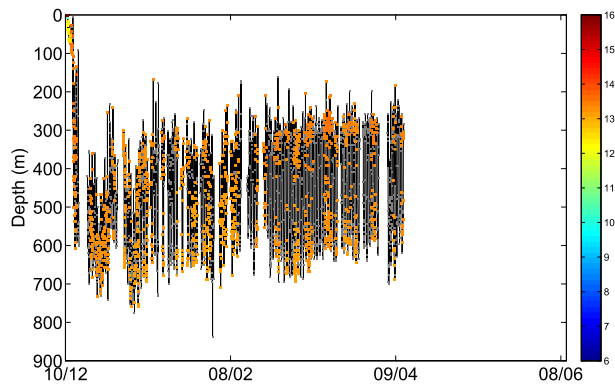
133981



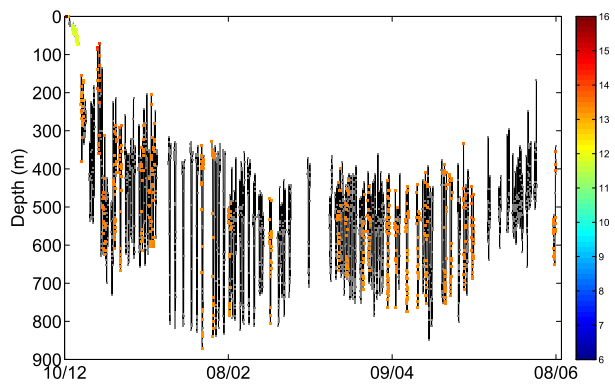
133980



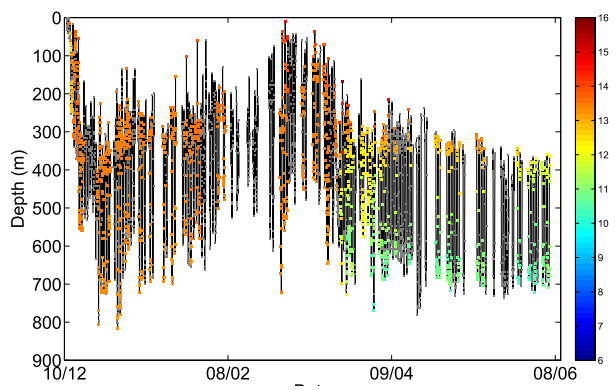
133983



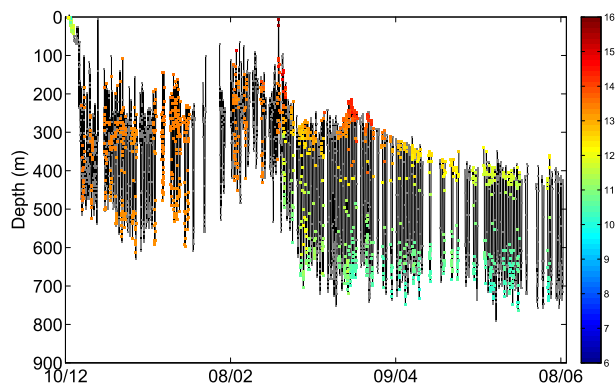
133982



133985



133979



133986

Supplementary Figure S2: Plots of predation events. The grey rectangles indicate when the predation took place. The grey symbols correspond to depth values and the red to the temperatures.

