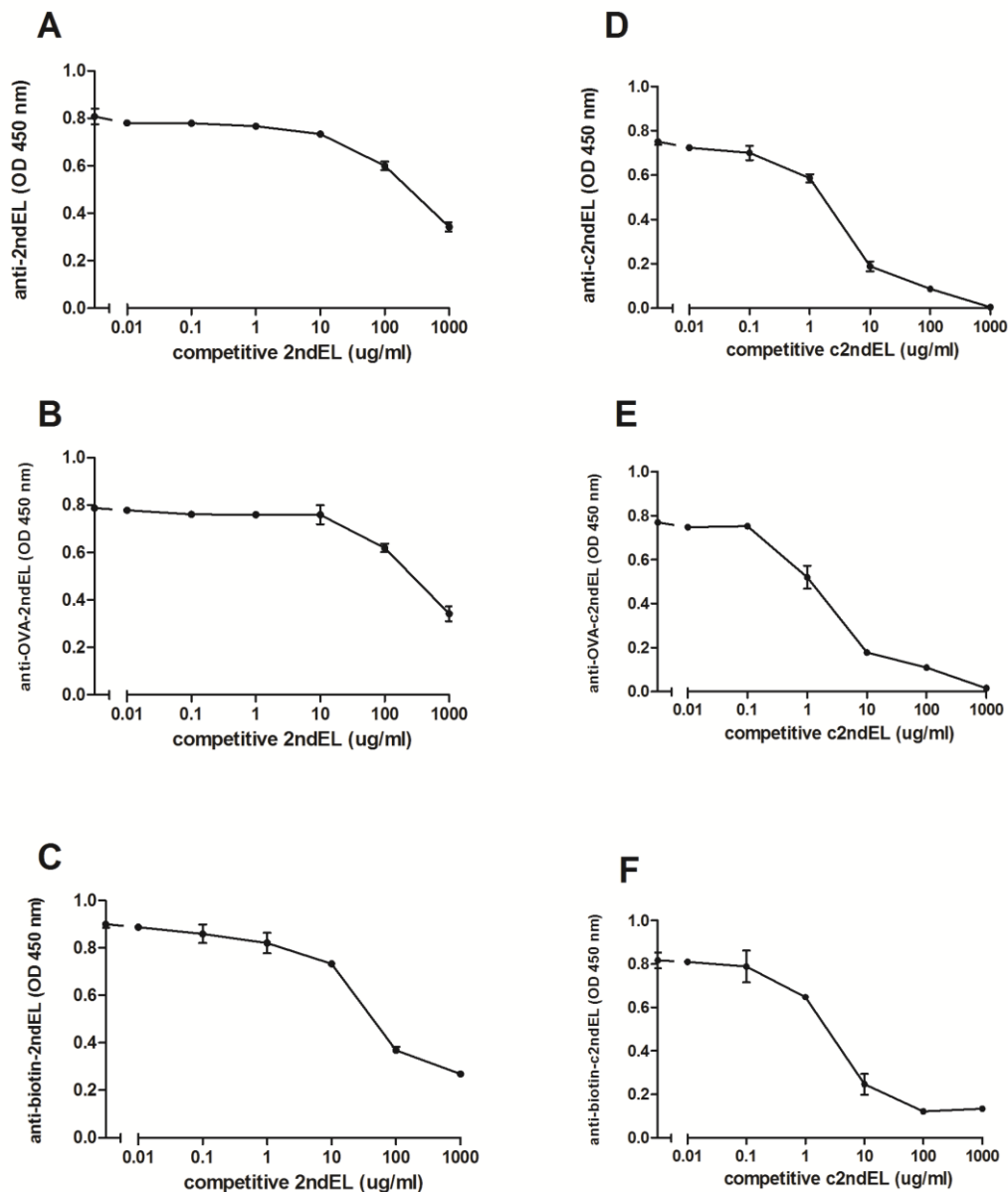


## Supporting information



### S1 Fig. Competitive ELISA curves for detecting autoantibodies against M3R peptides.

Using 2ndEL as the competitive peptide, the specificity of the autoantibodies against 2ndEL was determined by using 2ndEL ( A ), OVA-2ndEL ( B ) or bio-2ndEL ( C ) as the coated antigen. Using c2ndEL as the competitive peptide, the specificity of the autoantibodies against c2ndEL was determined by using c2ndEL ( D ), OVA-c2ndEL ( E ) or coating bio-c2ndEL as the coated antigen ( F ).