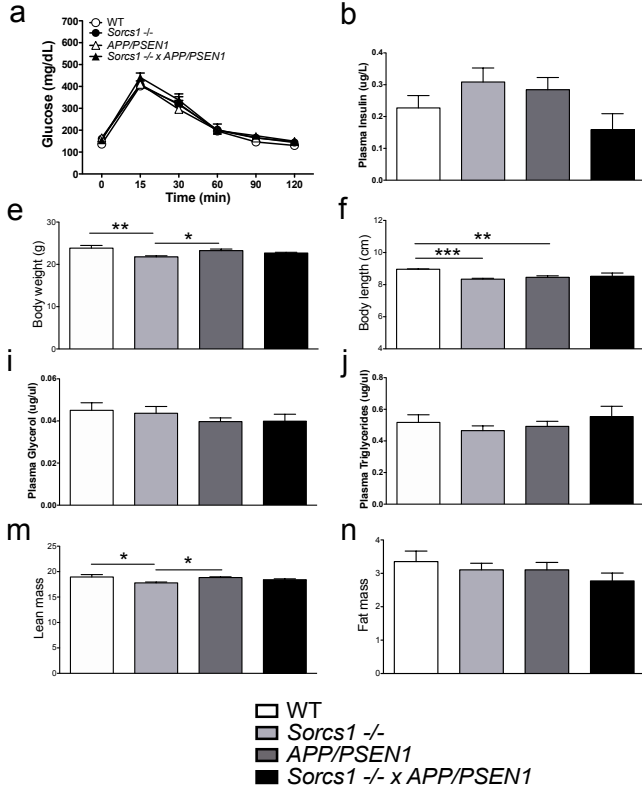


Additional file 1: Figure S1. Young *Sorcs1* ^{-/-}, *APP/PSEN1* mice and *Sorcs1* ^{-/-} x *APP/PSEN1* mice display normal glucose homeostasis. Glucose tolerance testing (**a,c**), fasting plasma insulin (**b,d**), body weight (**e,g**), body length (**f,h**), fasting plasma glycerol (**i,k**), fasting plasma triglycerides (**j,l**), lean mass (**m,o**) and fat mass (**n,p**) in cohorts of male and female WT (n=5-8/group), *Sorcs1* ^{-/-} (n=10/group), *APP/PSEN1* (n=4-8/group) and *Sorcs1* ^{-/-} x *APP/PSEN1* (n=4-6/group). Cohorts were maintained on standard rodent chow from weaning and assessed at 4-5 months of age. **P*<0.05, ***P*<0.01 and ****P*<0.001; One-way ANOVA with Bonferroni posthoc analyses. Data expressed as mean ± s.e.m.

Additional file 1: Figure S1

Female



Male

