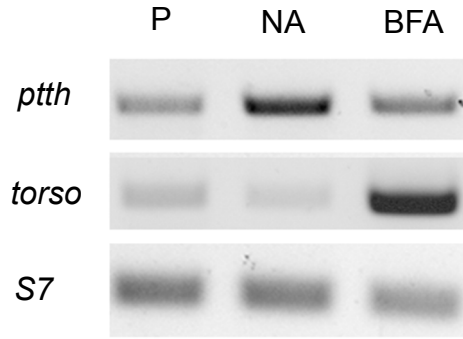


A**B****rAaPTTH**

```

1 ATGCACCATCATCATCATTCTTCTGGTCTGGTGCCACGCGGTTCTGGTATGAAAGAA 60
1 M H H H H H H S S G L V P R G S G M K E 20
61 ACCGCTGCTGCTAAATTCGAACGCCAGCACATGGACGCCAGATCTGGGTACCGATGAC 120
21 T A A A K F E R Q H M D S P D L G T D D 40
121 GAGCAAGATGAACGACAAGCATGGCGATCTATCGGCGGATTTATCTCTCAATATCCG 180
41 D D K M N D K H G D L S A D L F S Q Y P 60
181 TCGTCTTGCTGCTGCCAAACAAGTACGAGCTGTTGGACTTGGATATACACATTTTCCT 240
61 S S C A C Q T K Y E L L D L G Y T H F P 80
241 CGCTATATAGTGAATGCCATTTGCCAGAATCGTAACATCAATAGCCGTAATGCTGGCGC 300
81 R Y I V N A I C Q N R N I N S R K C W R 100
301 GGATCAGCTGCAAGAAATTCGGTACAAAGTACGCGTCTGACTCAACGTGCGAGAAGGA 360
101 G S R C K E I P Y K V R V L T Q R A E G 120
361 GAATCAATTGAGCAGGACCATCTTACGCTCCTCCCGAACCGTTGCGAGACATATGG 420
121 E S I E Q D H H S T L L P E P L R D I W 140
421 CGATTCAAACCGTCACCGTAGCAGCCGCTTGCCAATGTTGATACCGGGCTTCTCTCA 480
141 R F K T V T V A A A C Q C S I P G F S S 160
481 ACCATGGCGATATCGGATCCGAATTCGAGCTCCGTCGACAAGCTTGGCGCGCACTCGAG 540
161 T M A I S D P N S S S V D K L A A A L E 180
541 CACCACCACCACCACCTGA 561
181 H H H H H H H * 186

```

rBmPTTH

```

1 ATGCACCATCATCATCATTCTTCTGGTCTGGTGCCACGCGGTTCTGGTATGAAAGAA 60
1 M H H H H H H S S G L V P R G S G M K E 20
61 ACCGCTGCTGCTAAATTCGAACGCCAGCACATGGACGCCAGATCTGGGTACCGATGAC 120
21 T A A A K F E R Q H M D S P D L G T D D 40
121 GAGCAAGATGAACGACAAGCATGGCGATCTATCGGCGGATTTATCTCTCAATATCCG 180
41 D D K M N D K H G D L S A D L F S Q Y P 60
181 TCGTCTTGCTGCTGCCAAACAAGTACGAGCTGTTGGACTTGGATATACACATTTTCCT 240
61 S S C A C Q T K Y E L L D L G Y T H F P 80
241 CGCTATATAGTGAATGCCATTTGCCAGAATCGTAACATCAATAGCCGTAATGCTGGCGC 300
81 R Y I V N A I C Q N R N I N S R K C W R 100
301 GGATCAGCTGCAAGAAATTCGGTACAAAGTACGCGTCTGACTCAACGTGCGAGAAGGA 360
101 G S R C K E I P Y K V R V L T Q R A E G 120
361 GAATCAATTGAGCAGGACCATCTTACGCTCCTCCCGAACCGTTGCGAGACATATGG 420
121 E S I E Q D H H S T L L P E P L R D I W 140
421 CGATTCAAACCGTCACCGTAGCAGCCGCTTGCCAATGTTGATACCGGGCTTCTCTCA 480
141 R F K T V T V A A A C Q C S I P G F S S 160
481 ACCATGGCGATATCGGATCCGAATTCGAGCTCCGTCGACAAGCTTGGCGCGCACTCGAG 540
161 T M A I S D P N S S S V D K L A A A L E 180
541 CACCACCACCACCACCTGA 561
181 H H H H H H H * 186

```