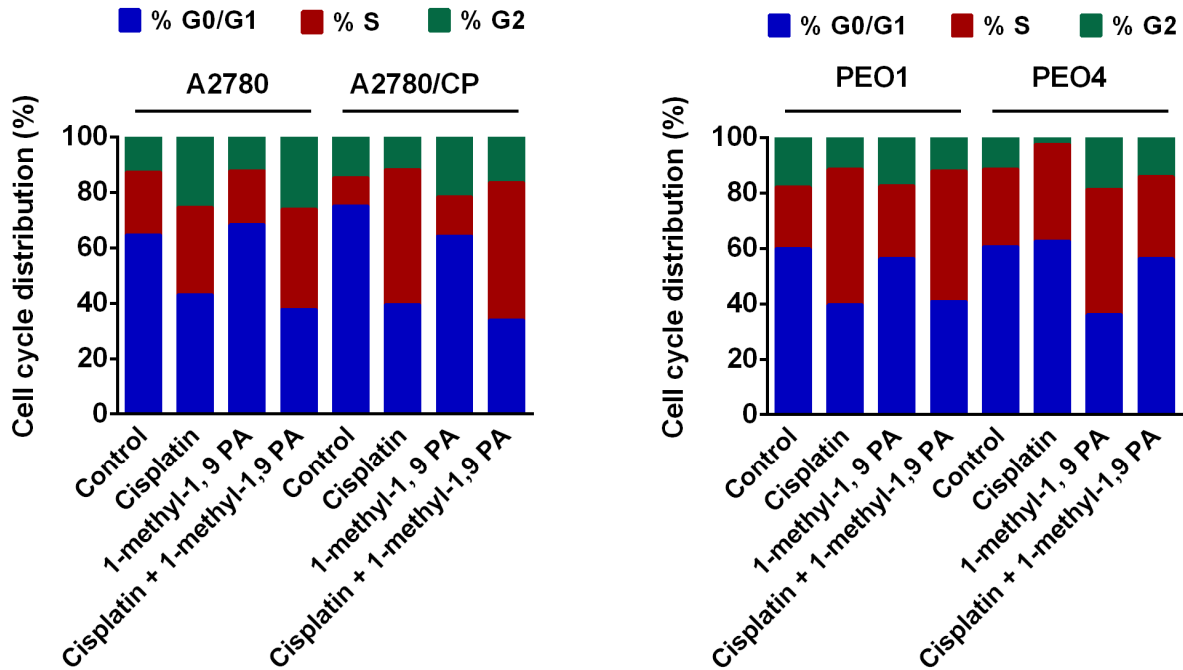


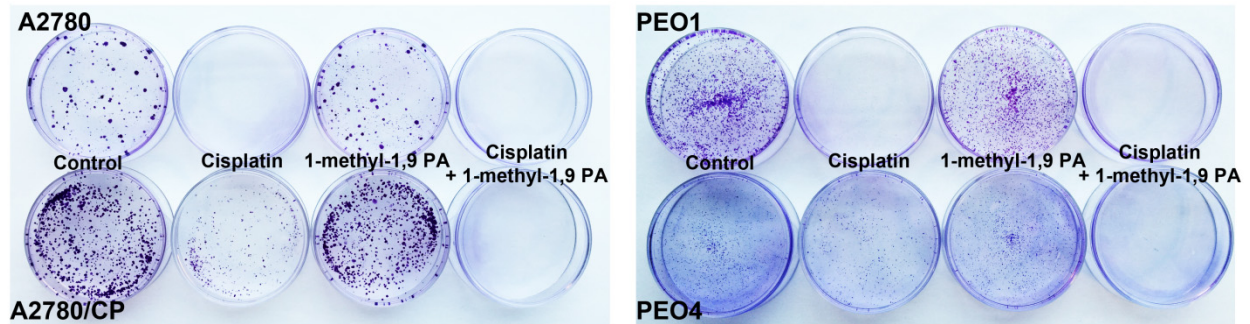
Supplementary Figure 1



Supplementary Figure 1. 1-methyl-1, 9 PA had no significant effect on cisplatin-induced S phase accumulation in cisplatin-sensitive or -resistant ovarian cancer cells but lowered the percentage of G1 phase cells in cisplatin-resistant ovarian cancer cells.

A2780, A2780/CP, PEO1, and PEO4 ovarian cancer cells were treated with 20 μ M cisplatin, 10 μ M 1-methyl-1, 9 PA, or both for 36 h. After treatment, the cells were harvested and subjected to flow cytometry analysis after staining with DAPI dye according to the vendor's protocol. Shown are the percentages of cells in G1, S, and G2/M phases after the indicated treatments.

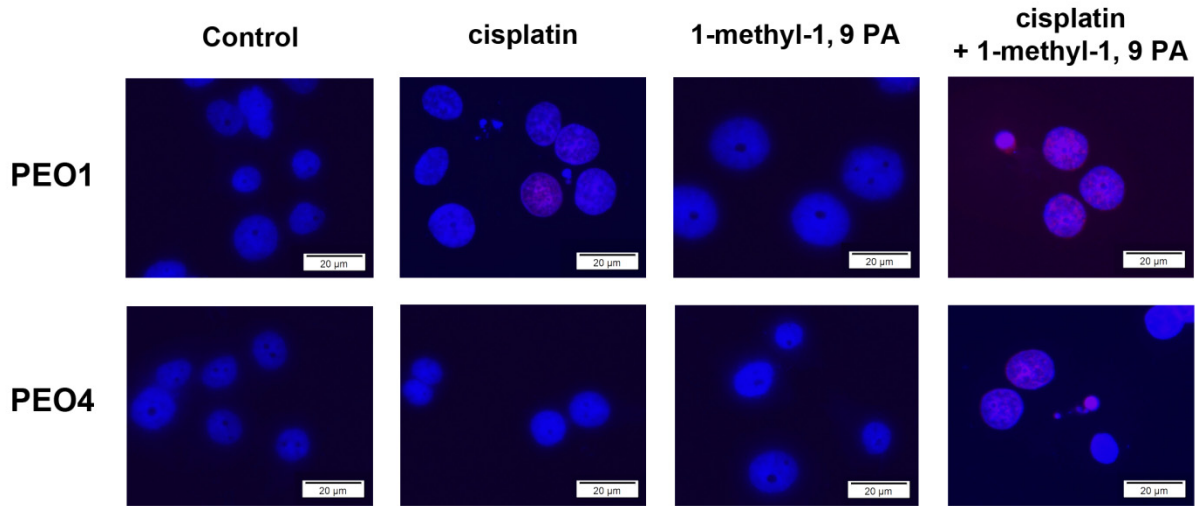
Supplementary Figure 2



Supplementary Figure 2. 1-methyl-1, 9 PA enhanced cisplatin-induced inhibition of clonogenic survival of cisplatin-resistant ovarian cancer cells.

A2780, A2780/CP, PEO1, and PEO4 ovarian cancer cells were treated with 5 μ M cisplatin, 10 μ M 1-methyl-1, 9 PA, or both for overnight. The cells were then subjected to a clonogenic assay for 10 days in culture. Surviving clones in the dishes were fixed and stained with a solution containing 0.2% crystal violet in 10% ethanol for 30 minutes, and then photographed.

Supplementary Figure 3



Supplementary Figure 3. 1-methyl-1, 9 PA enhanced cisplatin-induced DNA damage in both cisplatin-sensitive and cisplatin-resistant ovarian cancer cells.

PEO1 and PEO4 ovarian cancer cells were cultured on chamber slides overnight for attachment and were then treated with 20 μ M cisplatin, 10 μ M 1-methyl-1, 9 PA, or both for overnight. After treatment, the cells on the chamber slides were fixed with 95% ethyl alcohol/5% acetic acid for 5 minutes at room temperature. Following blocking with 3% BSA in Tris HCl (pH 7.4) with 0.5% Tween (TBST) for 30 minutes at room temperature, the cells were stained with a 1:200 dilution of Alexa Fluor 555-conjugated anti-phospho-H2A.X antibody (Ser139) (clone JBW30, EMD Millipore) for 1.5 hour in a dark box. After the incubation, the cells on the chamber slides were washed three times with TBST and then mounted with cover slips for observation under a fluorescent microscope.