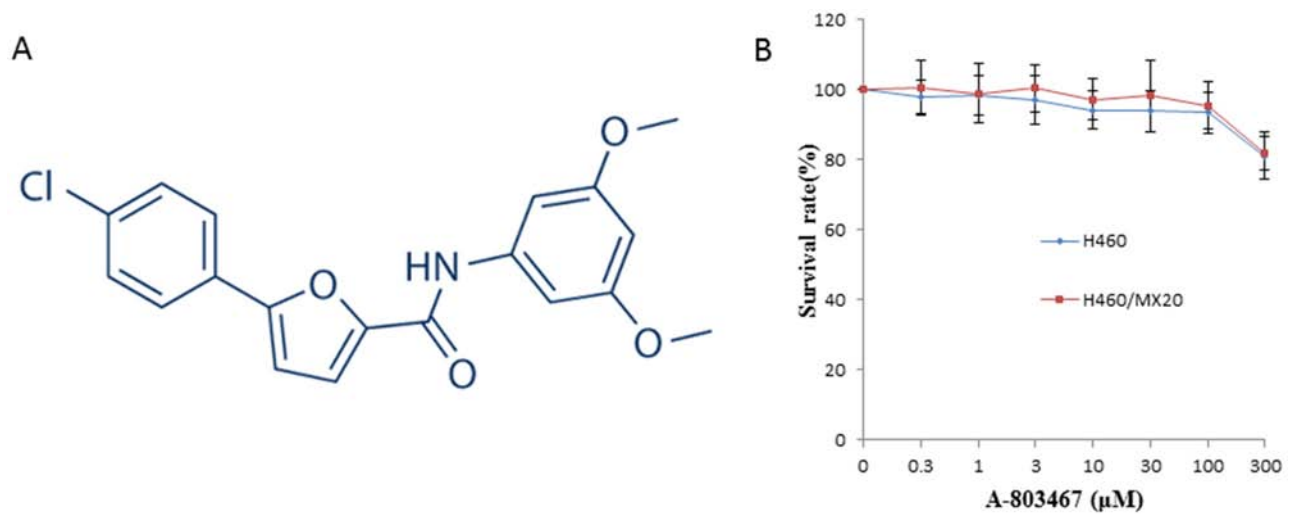
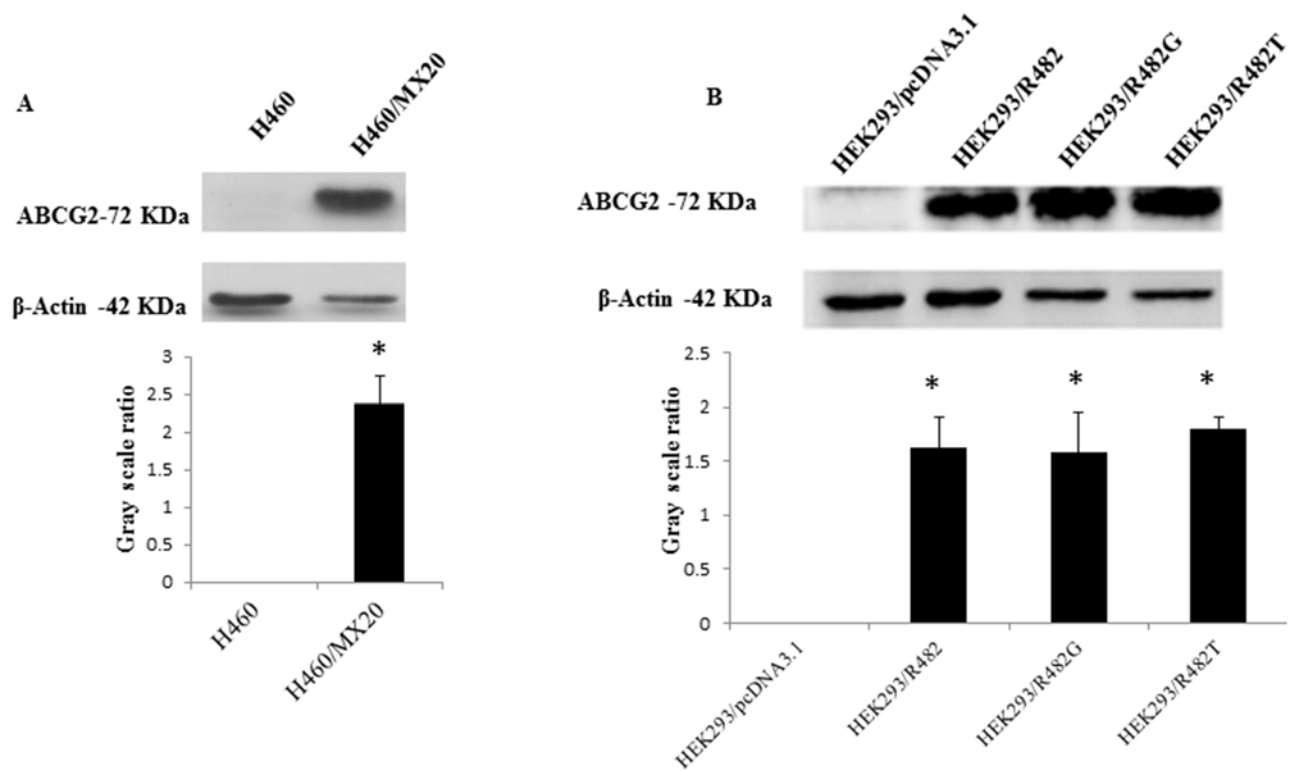


## SUPPLEMENTARY FIGURES



**Supplementary Figure S1: The chemical structure of A-803467 and the effect of A-803467 on the cell lines used in the study. A.** The chemical structure of A-803467 (5-(4-chlorophenyl)-N-(3,5-dimethoxyphenyl)furan-2-carboxamide). **B.** Cytotoxicity of A-803467 in H460 and H460/MX20 cell lines.



**Supplementary Figure S2: Expression of ABCG2 transporter in cell lines used in the study.** A. Western blotting to detect ABCG2-expression in H460 and in ABCG2-overexpressing H460/MX20 cell line B. Transfected HEK293/R482, HEK293/R482G, and HEK293/R482T cell lines. The protein levels of ABCG2 were normalized to those of  $\beta$ -actin. Representative results are shown here and similar results were obtained in other two trials. Values are the mean  $\pm$  SD of 3 assays.