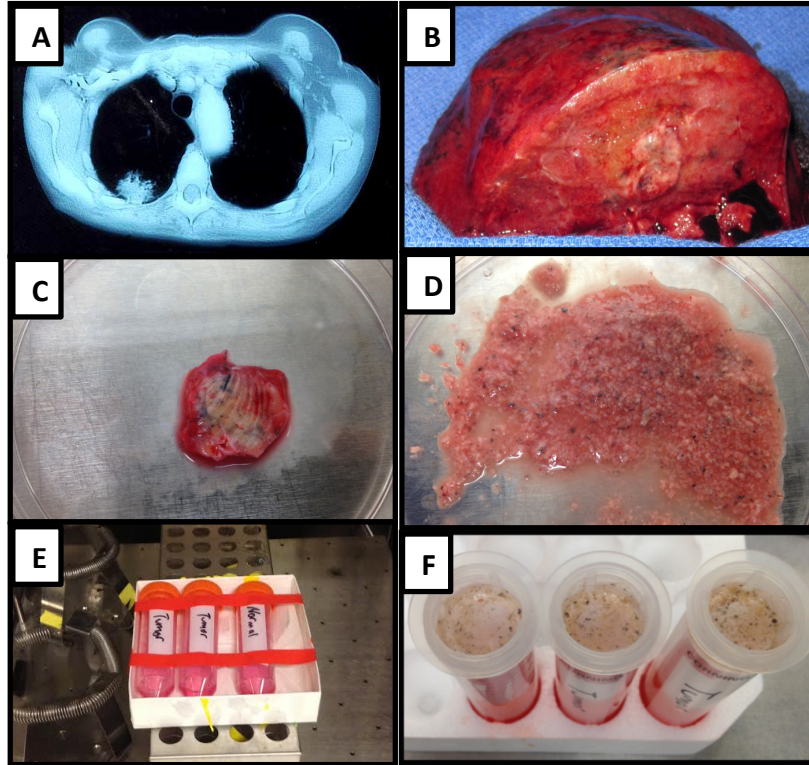


Supplemental Figure 1



Supplemental Figure 1: The acquisition and processing of lung tumor specimens. **(A)** Chest CT scan of a patient with NSCLC demonstrating a right lobe mass. **(B)** Diseased lung with tumor (center) post-surgical resection. **(C)** Tumor tissue after areas of necrosis and peritumoral normal lung tissue have been removed. **(D)** Finely minced tumor sample. **(E)** Incubation and gentle oscillation of tumor samples at 37 °C. **(F)** Cell strainers after passage of tumor samples.

Markers	Clone	Source
CD3	UCHT1	Biologend
CD4	OKT4	Biologend
CD8	HIT8A	Biologend
CD45RO	UCHL1	Biologend
CD19	SJ25C1	BD Pharmingen
CD62L	DREG-56	Biologend
CD15	HI98	BD Biosciences
CD11b	ICRF44	Biologend
CD33	HIM3-4	Biologend
CD66b	G10F5	Biologend
CD14	M5E2	BD Biosciences
HLA-DR	G46-6	Biologend
CD163	GHI/61	Biologend
CD56	HCD56	Biologend
CD244	2B4	BD Pharmingen
CD32	FUN-2	Biologend
NKG2a	131411	R&D Systems
CCR5	HEK/1/85a	Biologend
CCR7	G043H7	Biologend
CXCR1	8F1/CXCR1	Biologend
CXCR2	5e8/excr2	Biologend
CD40	5C3	Biologend
PD-1	EH12.1	BD Biosciences

Supplemental Table 1. Table of antibodies and their respective clones utilized.

Ref	Unsp. Col	Col I	Col II	Col IV	Prot XIV	DNase	Elast ase	Com m. Cktls	Tumor
(1)	300 U/mL (W)	-	-	-	-	50 U/mL	-	-	Lung
(2)	0.14%	-	-	-	-	0.14%	-	-	Ovarian
(3)	0.1%	-	-	-	-	0.1%	-	-	Colon
(4)	-	200 U/mL(S)	-	530 U/mL (S)	-	20 U/mL	-	-	Breast, Kidney, Lung
(5)	-	2% (S)	-	-	-	-	-	-	Skin
(6)	-	0.1% (S)	-	-	-	0.02%	-	-	HNC
(7)	-	0.2% (W)	-	-	-	-	-	-	Breast, Gast
(8)	-	1 mg/mL (R)	-	-	-	100 U/mL	-	-	Lung
(9)	-	360 U/mL (S)	-	-	-	309 U/mL	-	-	Lung (Hu+Mo)
(10)	-	0.25% (S)	-	-	-	0.1%	-	-	Lung
(11)	-	-	0.02% (S)	-	0.05% (S)	0.02%	-	-	Sarcoma (Hu+Mo)
(12)	-	-	0.8% (W)	-	-	0.002%	-	-	Urologic
(13)	-	-	0.5 mg/mL (S)	-	-	0.002%	-	-	Colon, HNC
(14)	-	-	0.05% (W)	-	-	0.002%	-	-	Colon, Lung
(15)	-	-	0.8%	-	-	0.002%	-	-	Melanoma, sarcoma
(16)	-	-	0.8% (S)	-	-	0.002%	-	-	Ovarian
(17)	-	-	-	0.4%	-	0.2%	-	-	Lung
(18)	-	-	-	2500 U/mL	-	-	-	-	Sarcoma
(19)	-	-	-	200U/mL	-	270 U/mL	-	-	Lung
(20)	-	-	-	(163-230U/mL) (S)	-	0.02%	-	-	Sarcoma
(21)	2 mg/mL (S)	-	-	-	0.2mg/mL (S)	600 U/mL	-	-	HNC (Hu+Mo)
(22)	4 mg/mL	-	-	-	-	-	0.4 mg/mL	-	Lung
(23)	-	200U/ml	-	200U/ml	250 mg/L	50mg/ml	-	-	Bladder, RCC
(24)	-	-	-	-	-	-	-	0.5 mg/mL	Lung
(25)	-	-	-	-	-	-	200 µg/mL	500 µg/mL	Colorectal

Supplemental Table 2—Results of a literature search for the common disaggregation methods in solid human cancers. Enzymes, enzyme concentrations, and tumors tested in are reported.

Unspecified, Unsp.; Reference, Ref; Collagenase, Col; Protease, Prot; Commercial, Comm.; Cocktails, Cktls; Sigma company, (S); Worthington company, (W); Roche company, (R); Human, Hu; Mouse, Mo; Gastrointestinal, GI; Unit, U.

References:

1. Holt, P.G., Robinson, B.W., Reid, M., Kees, U.R., Warton, A., Dawson, V.H., Rose, A., Schon-Hegrad, M., and Papadimitriou, J.M. 1986. Extraction of immune and inflammatory cells from human lung parenchyma: evaluation of an enzymatic digestion procedure. *Clin. Exp. Immunol.* **66**:188-200.
2. Haskill, S., Koren, H., Becker, S., Fowler, W., and Walton, L. 1982. Mononuclear-cell infiltration in ovarian cancer. II. Immune function of tumour and ascites-derived inflammatory cells. *Br. J. Cancer* **45**:737-746.
3. Vose, B.M., Gallagher, P., Moore, M., and Schofield, P.F. 1981. Specific and non-specific lymphocyte cytotoxicity in colon carcinoma. *Br. J. Cancer* **44**:846-855.
4. Grange, C., Letourneau, J., Forget, M.A., Godin-Ethier, J., Martin, J., Liberman, M., Latour, M., Widmer, H., Lattouf, J.B., Piccirillo, C.A. et al. 2011. Phenotypic characterization and functional analysis of human tumor immune infiltration after mechanical and enzymatic disaggregation. *J. Immunol. Methods* **372**:119-126.
5. Novelli, M., Savoia, P., Cambieri, I., Ponti, R., Comessatti, A., Lisa, F., and Bernengo, M.G. 2000. Collagenase digestion and mechanical disaggregation as a method to extract and immunophenotype tumour lymphocytes in cutaneous T-cell lymphomas. *Clin. Exp. Dermatol.* **25**:423-431.
6. Chikamatsu, K., Sakakura, K., Toyoda, M., Takahashi, K., Yamamoto, T., and Masuyama, K. 2012. Immunosuppressive activity of CD14+ HLA-DR- cells in squamous cell carcinoma of the head and neck. *Cancer. Sci.* **103**:976-983.
7. Riccardi, A., Danova, M., Wilson, G., Ucci, G., Dormer, P., Mazzini, G., Brugnattelli, S., Girino, M., McNally, N.J., and Ascari, E. 1988. Cell kinetics in human malignancies studied with in vivo administration of bromodeoxyuridine and flow cytometry. *Cancer Res.* **48**:6238-6245.
8. Perrot, I., Blanchard, D., Freymond, N., Isaac, S., Guibert, B., Pacheco, Y., and Lebecque, S. 2007. Dendritic cells infiltrating human non-small cell lung cancer are blocked at immature stage. *J. Immunol.* **178**:2763-2769.
9. Kedar, E., Ikejiri, B.L., Bonnard, G.D., and Herberman, R.B. 1982. A rapid technique for isolation of viable tumor cells from solid tumors: use of the tumor cells for induction and measurement of cell-mediated cytotoxic responses. *Eur. J. Cancer Clin. Oncol.* **18**:991-1000.
10. Takeo, S., Yasumoto, K., Nagashima, A., Nakahashi, H., Sugimachi, K., and Nomoto, K. 1986. Role of tumor-associated macrophages in lung cancer. *Cancer Res.* **46**:3179-3182.
11. Harker, W.G., MacKintosh, F.R., and Sikic, B.I. 1983. Development and characterization of a human sarcoma cell line, MES-SA, sensitive to multiple drugs. *Cancer Res.* **43**:4943-4950.
12. Pavelic, K., Bulbul, M.A., Slocum, H.K., Pavelic, Z.P., Rustum, Y.M., Niedbala, M.J., and Bernacki, R.J. 1986. Growth of human urological tumors on extracellular matrix as a model for the in vitro cultivation of primary human tumor explants. *Cancer Res.* **46**:3653-3662.
13. Ensley, J.F., Maciorowski, Z., Hassan, M., Pietraszkiewicz, H., Sakr, W., and Heilbrun, L.K. 1993. Variations in DNA aneuploid cell content during tumor dissociation in human colon and head and neck cancers analyzed by flow cytometry. *Cytometry* **14**:550-558.

14. Miescher, S., Whiteside, T.L., Carrel, S., and von Fliedner, V. 1986. Functional properties of tumor-infiltrating and blood lymphocytes in patients with solid tumors: effects of tumor cells and their supernatants on proliferative responses of lymphocytes. *J. Immunol.* **136**:1899-1907.
15. Slocum, H.K., Pavelic, Z.P., Rustum, Y.M., Creaven, P.J., Karakousis, C., Takita, H., and Greco, W.R. 1981. Characterization of cells obtained by mechanical and enzymatic means from human melanoma, sarcoma, and lung tumors. *Cancer Res.* **41**:1428-1434.
16. Langdon, S.P. 2004. Isolation and culture of ovarian cancer cell lines. *Methods Mol. Med.* **88**:133-139.
17. Nagourney, R.A., Blitzer, J.B., Shuman, R.L., Ascuito, T.J., Deo, E.A., Paulsen, M., Newcomb, R.L., and Evans, S.S. 2012. Functional profiling to select chemotherapy in untreated, advanced or metastatic non-small cell lung cancer. *Anticancer Res.* **32**:4453-4460.
18. Morozov, A., Downey, R.J., Healey, J., Moreira, A.L., Lou, E., Franceschino, A., Dogan, Y., Leung, R., Edgar, M., LaQuaglia, M. et al. 2010. Benign mesenchymal stromal cells in human sarcomas. *Clin. Cancer Res.* **16**:5630-5640.
19. Rabinowich, H., Cohen, R., Bruderman, I., Steiner, Z., and Klajman, A. 1987. Functional analysis of mononuclear cells infiltrating into tumors: lysis of autologous human tumor cells by cultured infiltrating lymphocytes. *Cancer Res.* **47**:173-177.
20. Rong, G.H., Grimm, E.A., and Sindelar, W.F. 1985. An enzymatic method for the consistent production of monodispersed viable cell suspensions from human solid tumors. *J. Surg. Oncol.* **28**:131-133.
21. Corzo, C.A., Condamine, T., Lu, L., Cotter, M.J., Youn, J.I., Cheng, P., Cho, H.I., Celis, E., Quiceno, D.G., Padhya, T. et al. 2010. HIF-1alpha regulates function and differentiation of myeloid-derived suppressor cells in the tumor microenvironment. *J. Exp. Med.* **207**:2439-2453.
22. Bagley, R.G., Rouleau, C., Morgenbesser, S.D., Weber, W., Cook, B.P., Shankara, S., Madden, S.L., and Teicher, B.A. 2006. Pericytes from human non-small cell lung carcinomas: an attractive target for anti-angiogenic therapy. *Microvasc. Res.* **71**:163-174.
23. Eruslanov, E., Stoffs, T., Kim, W.J., Daurkin, I., Gilbert, S.M., Su, L.M., Vieweg, J., Daaka, Y., and Kusmartsev, S. 2013. Expansion of CCR8(+) inflammatory myeloid cells in cancer patients with urothelial and renal carcinomas. *Clin. Cancer Res.* **19**:1670-1680.
24. Akunuru, S., Palumbo, J., Zhai, Q.J., and Zheng, Y. 2011. Rac1 targeting suppresses human non-small cell lung adenocarcinoma cancer stem cell activity. *PLoS One* **6**:e16951.
25. Zhang, B., Wang, Z., Wu, L., Zhang, M., Li, W., Ding, J., Zhu, J., Wei, H., and Zhao, K. 2013. Circulating and tumor-infiltrating myeloid-derived suppressor cells in patients with colorectal carcinoma. *PLoS One* **8**:e57114.