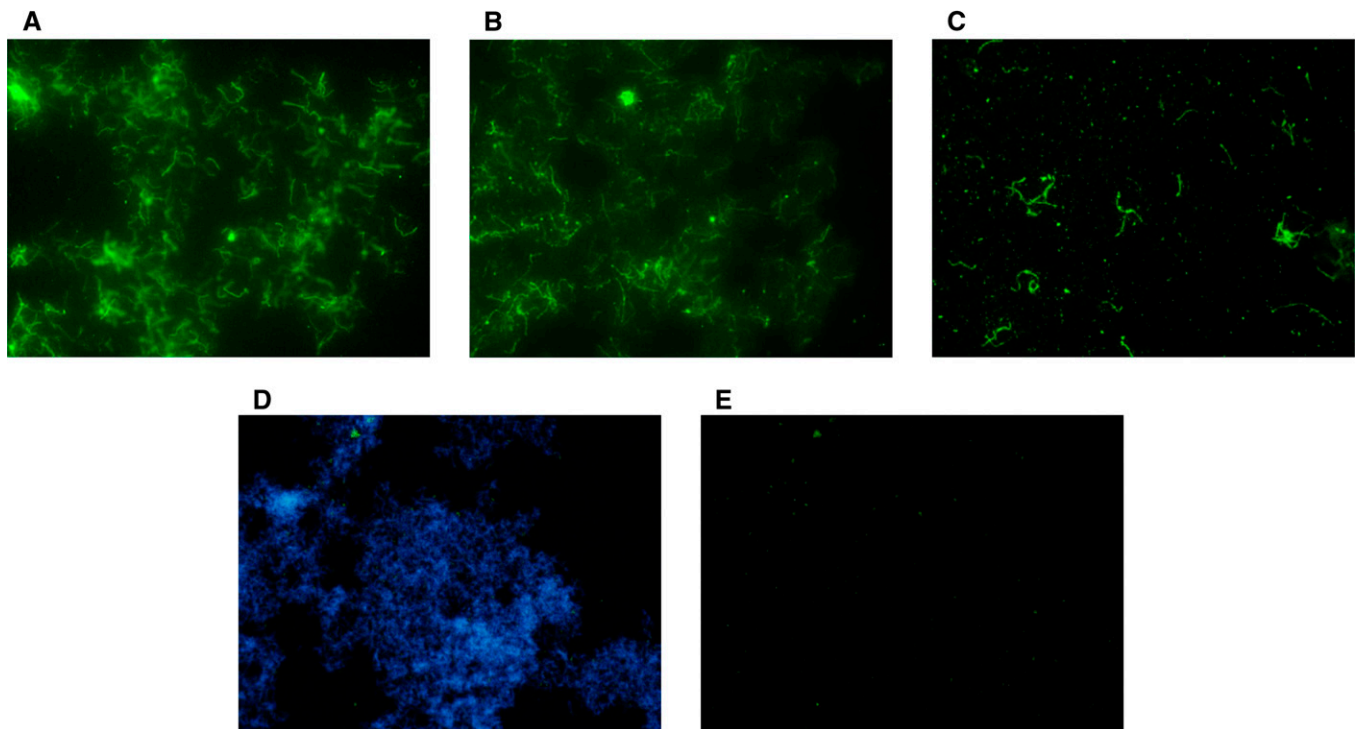


SUPPLEMENTAL FIGURE 1. Representative histopathological damages caused by serovar Mozdok in experimentally infected hamsters. All images are magnified $\times 20$. **(A)** Kidney with hemorrhagic and congested glomerulus (arrows), hemosiderin (dark spots), urinary casts (arrow heads). **(B)** Leukocyte infiltration (arrow) in the kidneys. **(C)** Liver section with leukocyte infiltration and hepatocytes with atypical architecture (traced line square). **(D)** Congested and hemorrhagic liver section (arrows). **(E and F)** Lung sections showing edema, congestion, hemorrhage, and hemosiderin (dark spots).



SUPPLEMENTAL FIGURE 2. Indirect immunofluorescence with rabbit polyclonal antibodies demonstrating the expression of putative virulence factors LigA, LigB, and LipL32 (panels **A**, **B**, and **C**, respectively). Panels **D** and **E** are the same field stained with Hoechst 33258 and negative rabbit serum, respectively. Visualization was performed on an Olympus BX51 fluorescence microscope and photographed with digital camera Olympus BP72. Images in the upper row are magnified $\times 100$ and the ones in lower row are magnified $\times 40$.