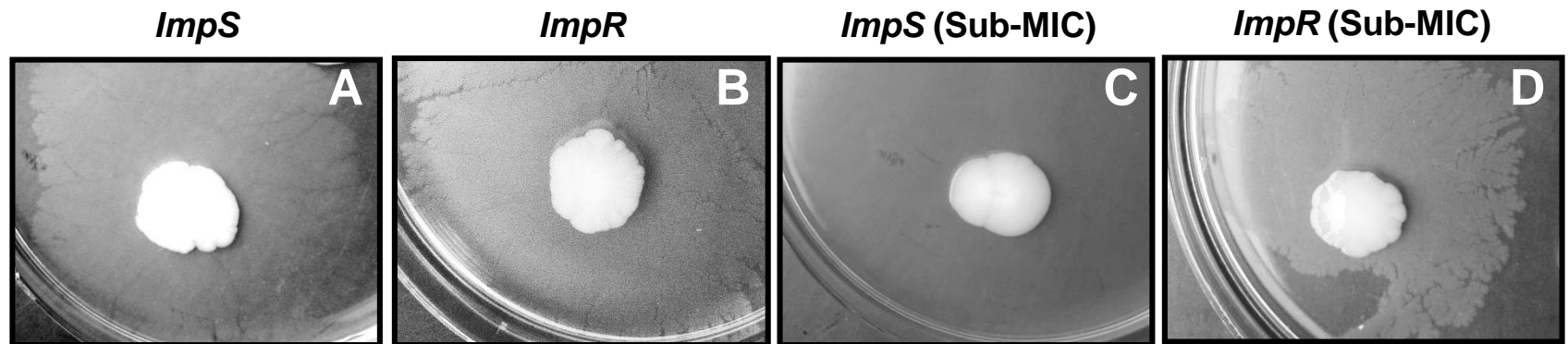


**Supplemental Fig. 1. Imipenem-resistant *A. baumannii* is biologically adapted to survive antibiotic treatment.** (A-D) Imipenem supplementation with sub-MIC causes morphological changes and cell discharge among Imp cells (black arrow), whereas ImpR remains intact and presents thicker pili by TEM (grey arrow).



**Supplemental Fig. 2. Difference in motility caused by exposure to a sub-MIC of imipenem. (A-D)** Twitching motility was increased in the *ImpR* strain (B vs. D) during antibiotic treatment with sub-MIC, overnight on 1% agar medium at 37°C.