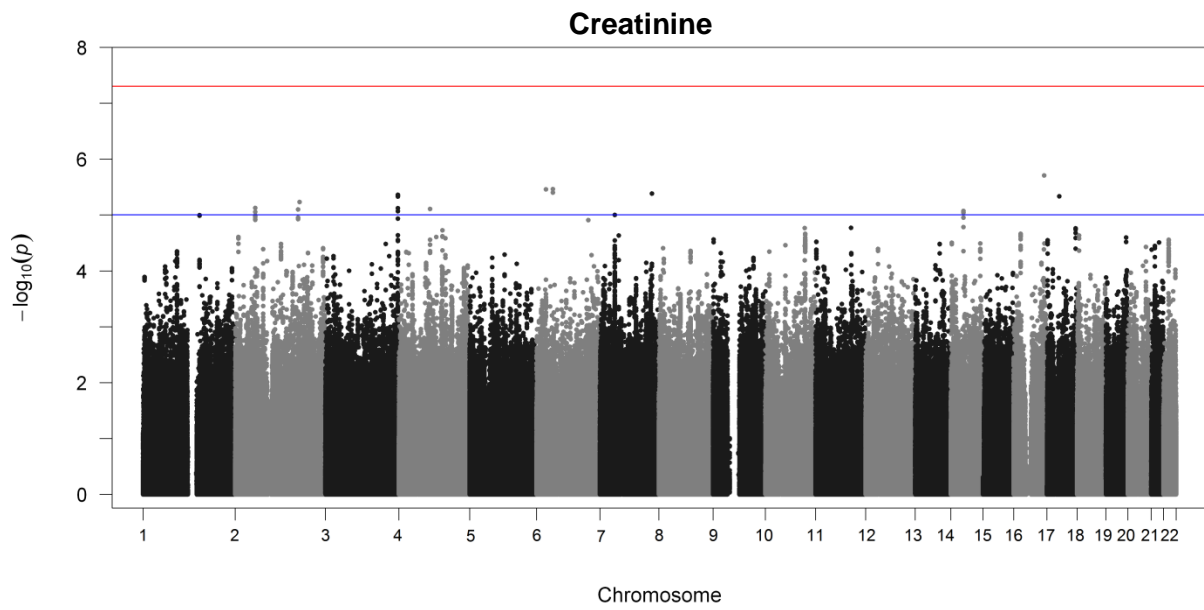
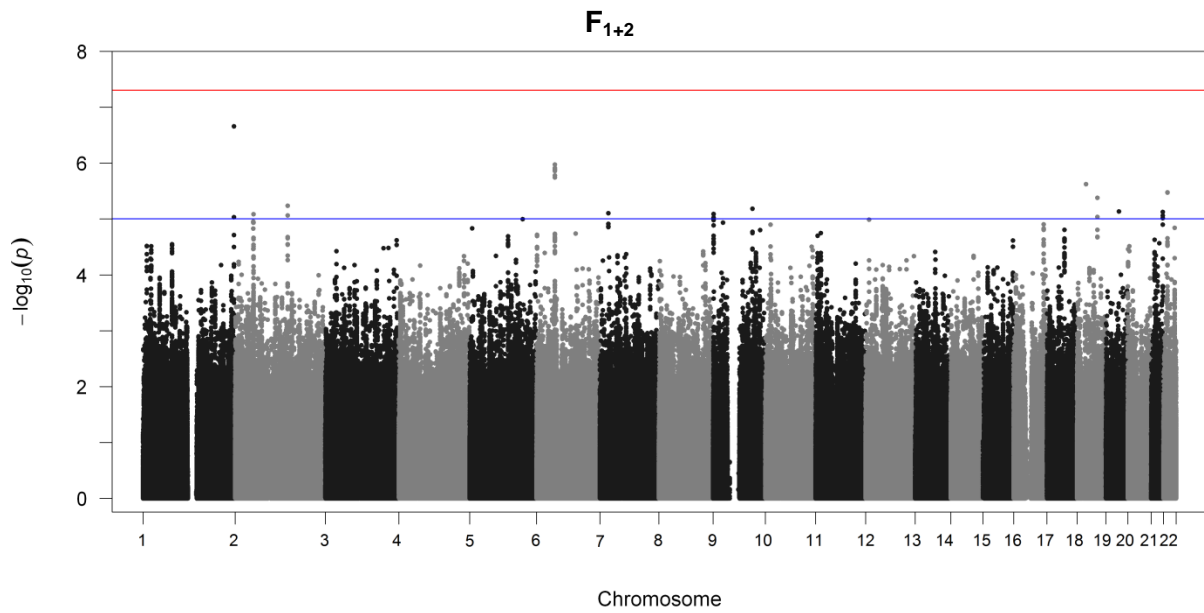


Figure e-2. Manhattan plots of VISP biomarker genome-wide association studies that did not reach the specified threshold of $p < 5 \times 10^{-8}$.

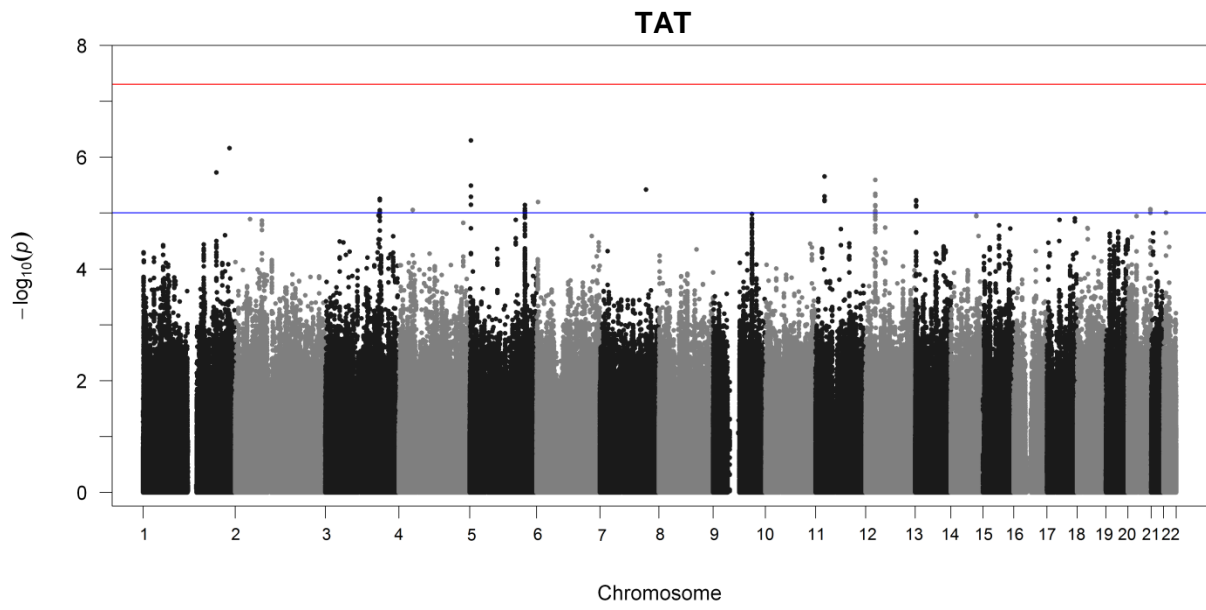
A



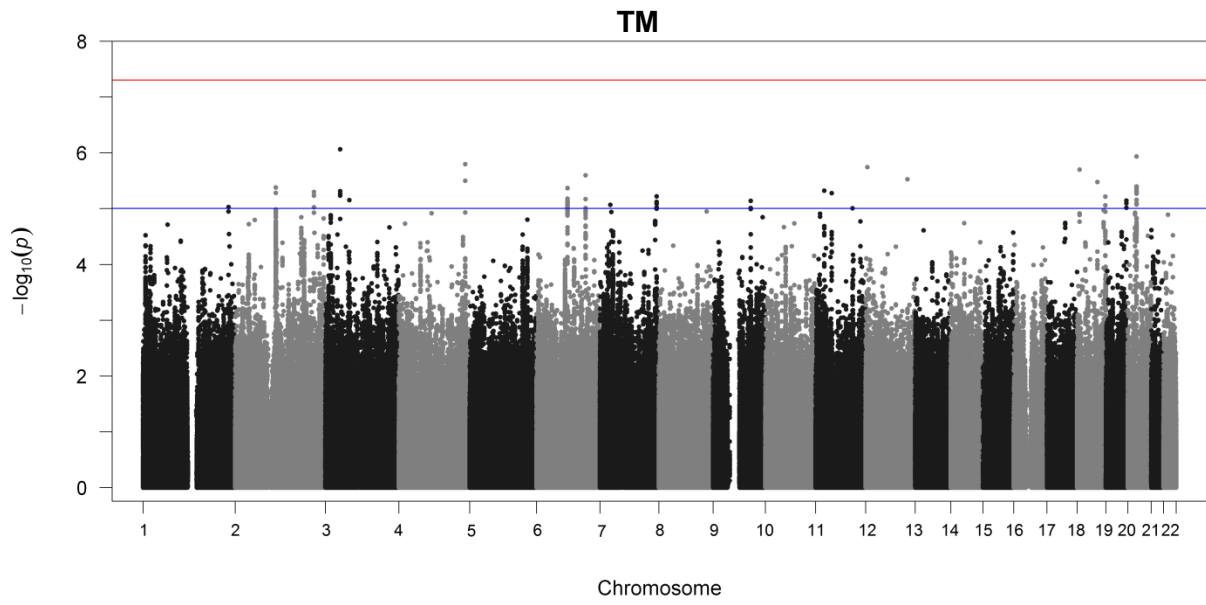
B



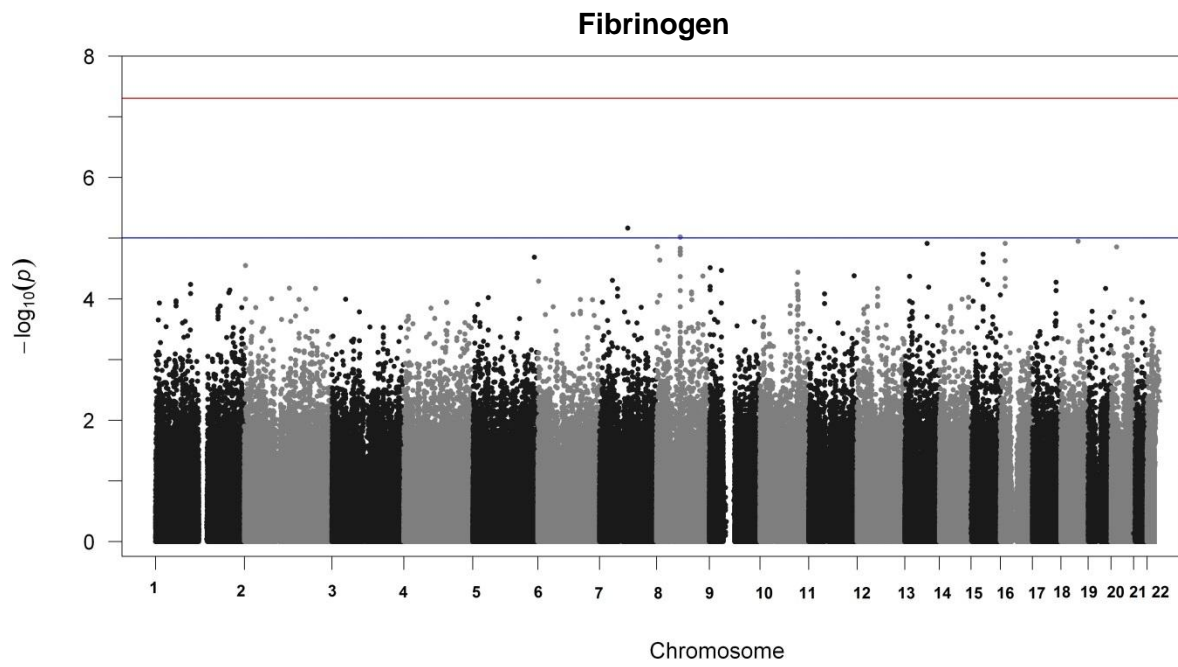
C



D



F



The red line represents a $-\log_{10}(p)$ of 5×10^{-8} and the blue line represents a $-\log_{10}(p)$ of 1×10^{-6} . The x-axis represents the analyzed chromosome.