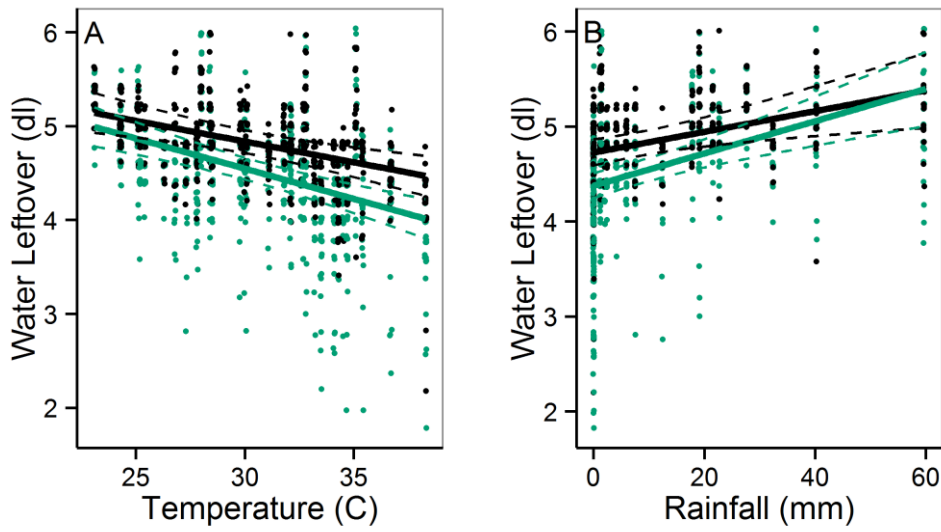


Figure S2. Result of Linear Mixed Model for relationship between water leftover in sticky trap and temperature (A) or rainfall (B) in treated and untreated site.



Initial values of water leftover= 5 dl; values >5 dl are due to rainfall or artificial watering. Lines=predicted mean value of water leftover; dashed line=95% confidence intervals. Green =treated site; black =untreated site.