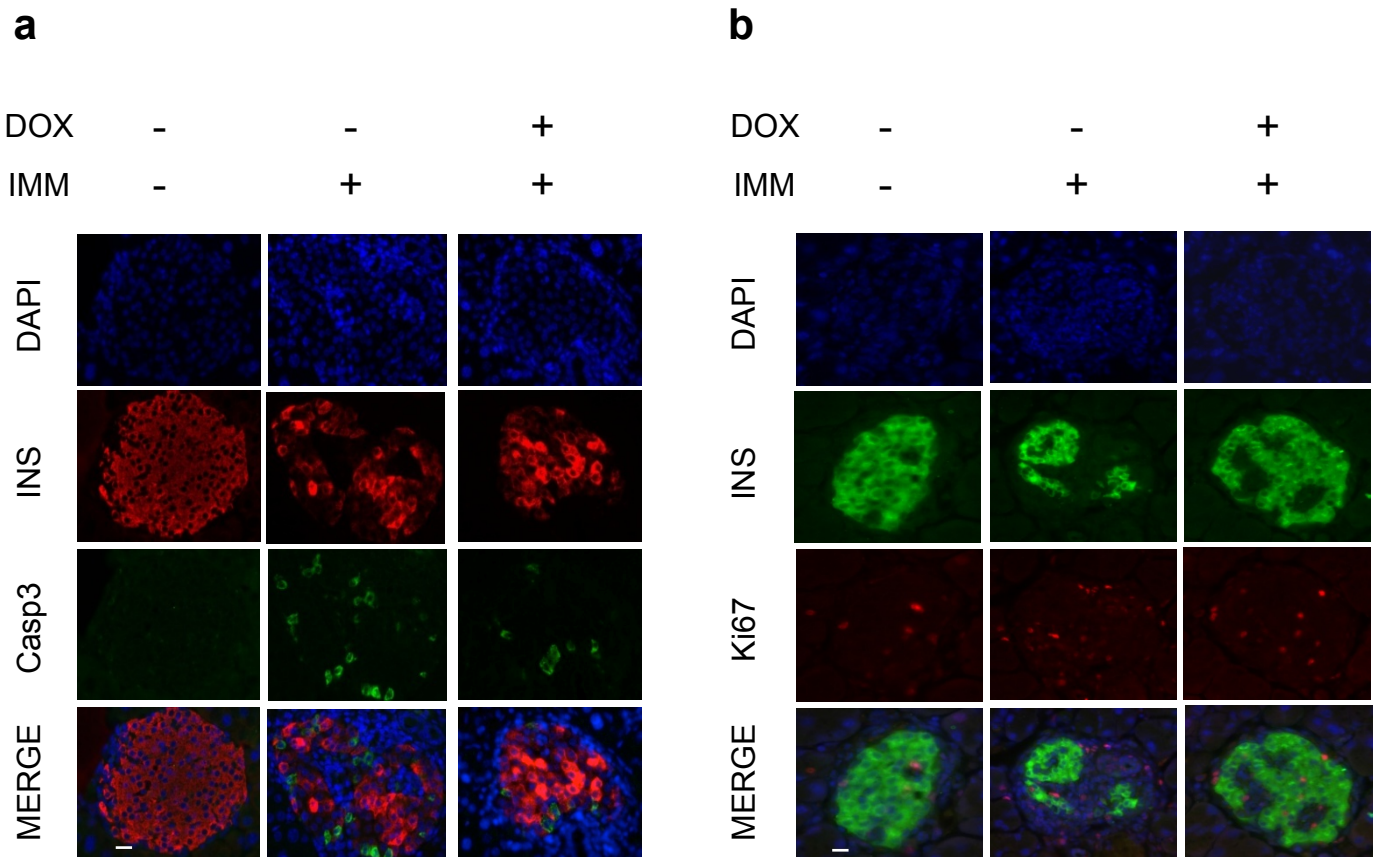


## ESM Fig. 2



**ESM Fig.2. Assessment of islet cell apoptosis and proliferation in BPTL mice by immunohistochemistry. (a)** Apoptosis detection by immunohistochemical analysis of cleaved CASPASE-3 (Casp3, green) and INSULIN (red) on pancreatic paraffin sections from control, immunized (IMM) or immunized and DOX-treated BPTL mice. Nuclei were stained with DAPI (blue). Representative images correspond to animals killed at 28 to 35 days post immunization. **(b)** Cell proliferation assessment by immunohistochemical analysis of Ki67 (red) and INSULIN (green) on pancreatic paraffin sections from control, immunized (IMM) or immunized and DOX-treated BPTL mice. Nuclei were stained with DAPI (blue). Representative images correspond to animals killed at 28 to 35 days post immunization. Bar, 25  $\mu$ m.