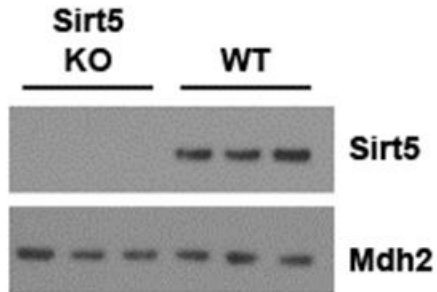
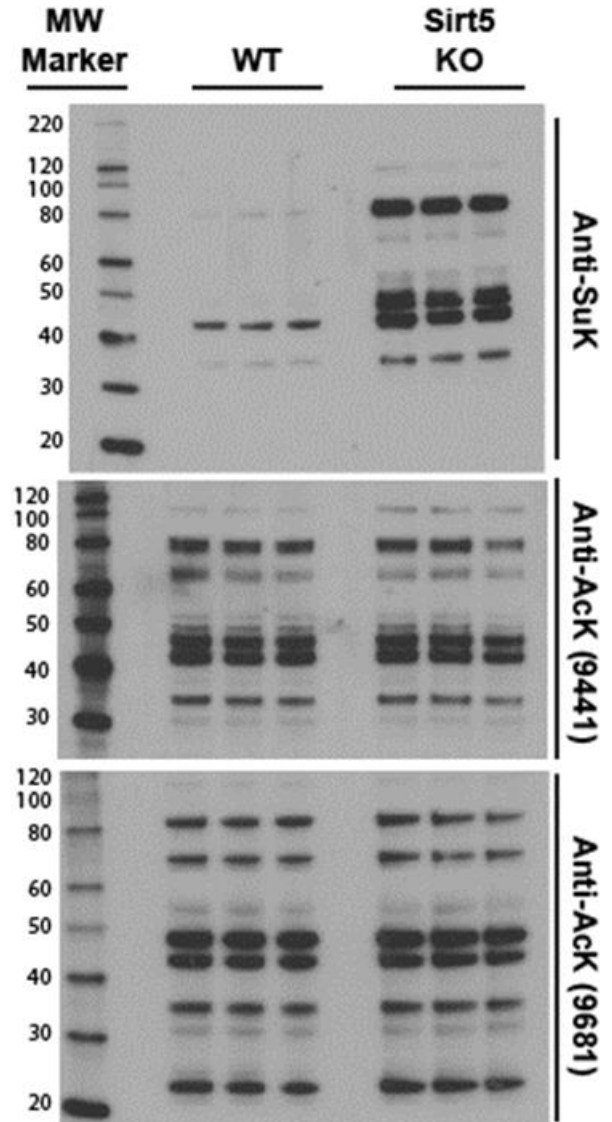


Online Figure 1

1a



1b



Online Figure 1. Increased succinylation in cardiac mitochondria isolated from *Sirt5*^{-/-} mice.

(a) Proteins were extracted from whole heart homogenates. Sirt5 protein abundance as measured with western blot to confirm knockout in cardiac cells.

Mdh2 protein abundance is not altered by Sirt5 deletion. (b) Proteins were extracted from mitochondria isolated from WT and *Sirt5*^{-/-} mice. *Top panel:* Protein succinylation was assessed with western blot and a polyclonal antibody that detects succinylated lysine (SuK) residues. 10 ug mitochondrial protein was loaded in each lane, and the blot demonstrates increased SuK in the *Sirt5*^{-/-} hearts. *Middle and bottom panels:* Protein acetylation was measured with western blot and two antibodies designed to detect acetylated lysine residues. 10 ug mitochondrial protein is loaded in each lane. The data indicate no significant difference in protein acetylation in the *Sirt5*^{-/-} mouse.