

## Supplementary Figure 1: Source Data (Gels) - Main Figures

Figure 1c

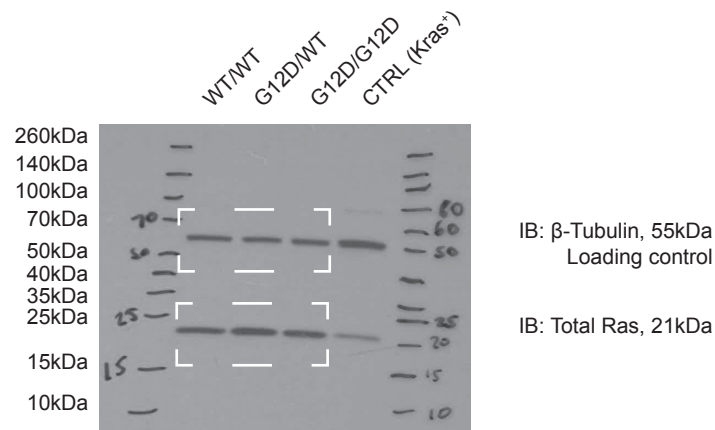
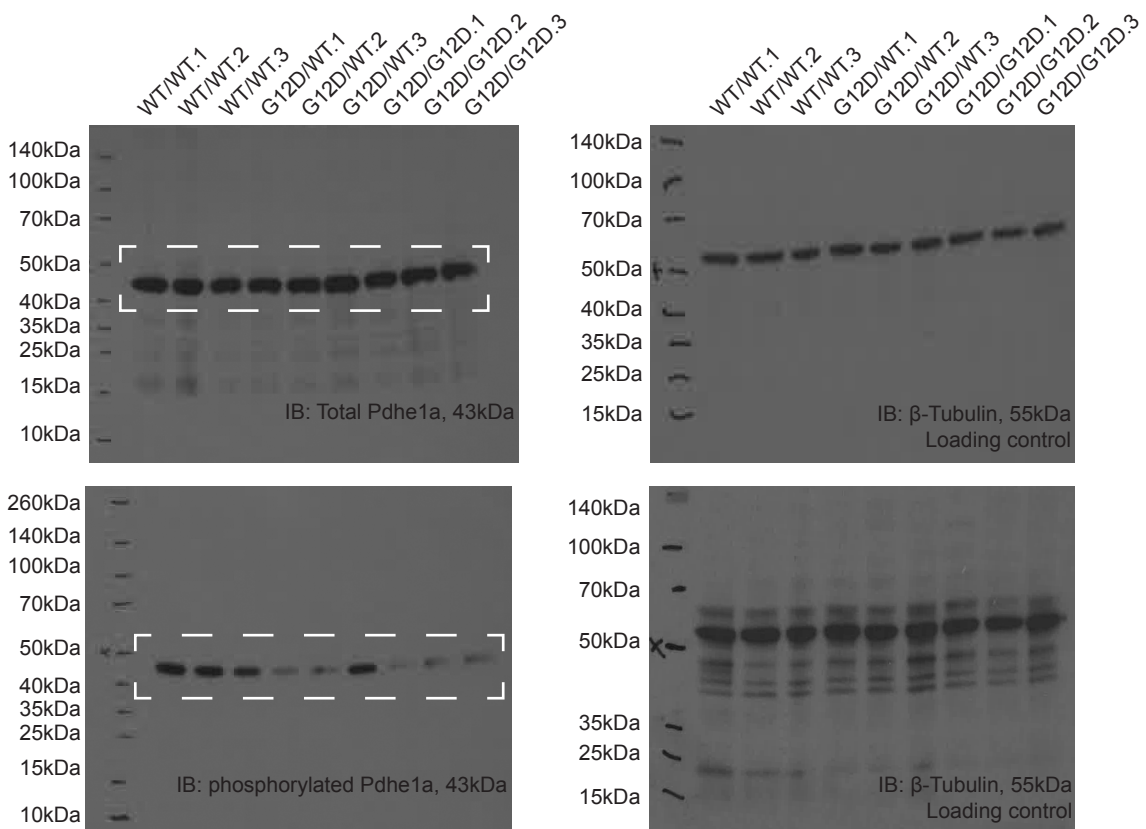


Figure 3a

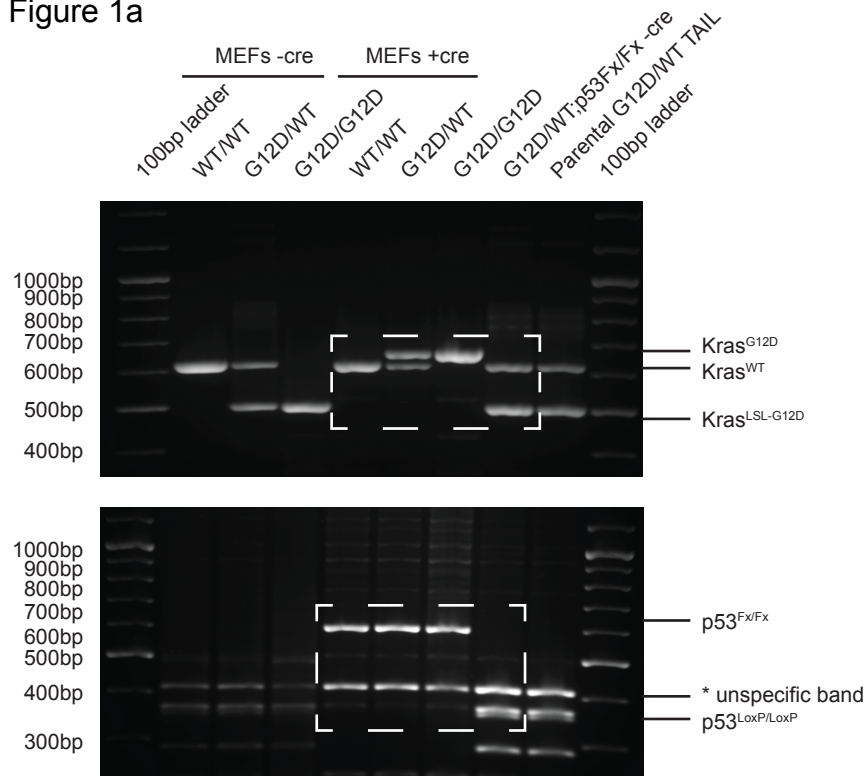


**Figure 1c.** Immunoblotting showing total Ras and β-Tubulin (loading control) expression in indicated MEFs and control samples. Cropped areas used in main Figure indicated. Representative data of 3 independent experiments.

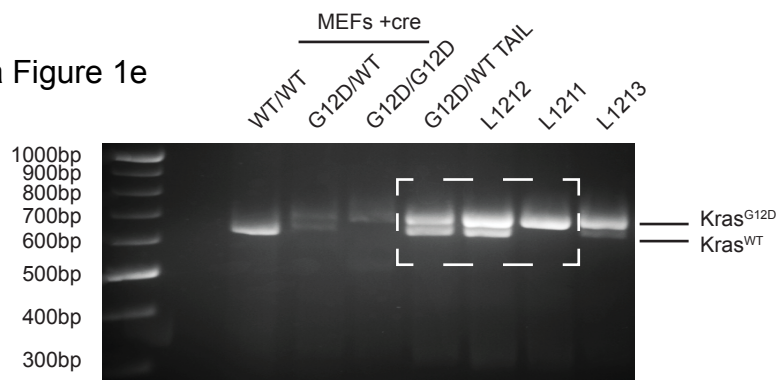
**Figure 3a:** Immunoblotting showing total and phospho-PDHE1α expression (left) and corresponding β-Tubulin levels (loading controls) (right), in indicated MEFs (3 independent MEFs/genotype shown).

## Supplementary Figure 2: Source Data (Gels) - Extended Data Figures

Extended Data Figure 1a



Extended Data Figure 1e



**Extended Data Figure 1a.** PCR gels of MEF and tumour cell genomic DNA. Unrecombined and Cre-recombined bands for *Kras* (top) and *p53* (bottom) loci indicated. Cropped areas used in Extended Figure indicated. Representative data shown (n=3).

**Extended Data Figure 1e.** PCR gels of MEF and tumour cell genomic DNA. Cre-recombined bands for *Kras* loci indicated. Cropped areas used in Extended Figure indicated.