

Supplementary Information For:

Quantitative proteomics study of the neuroprotective effects of B12 on hydrogen peroxide-induced apoptosis in SH-SY5Y cells

Lijun Zhong ^{a,#}, Juntuo Zhou ^{b,#}, Xi Chen ^a, Yaxin Lou ^a, Dan Liu ^a, Xiajuan Zou ^a, Bin Yang ^a, Yuxin Yin ^{c,d,*},
Yan Pan ^{e,*}

^a *Medical and Health Analytical Center, Peking University Health Science Center, Beijing 100191, China*

^b *Department of Pathology, School of Basic Medical Sciences, Peking University Health Science Center, Beijing 100191, China*

^c *Institute of Systems Biomedicine, Department of Pathology, School of Basic Medical Sciences, Peking University Health Science Center, Beijing, 100191, China.*

^d *Beijing Key Laboratory of Tumor Systems Biology, Beijing, 100191, China*

^e *Department of Pharmacology, School of Basic Medical Sciences, Peking University Health Science Center, Beijing 100191, China*

*#Co-first authors, *Co-corresponding authors*

Corresponding author:

Yan Pan

Address: *Department of Pharmacology, School of Basic Medical Sciences, Peking University Health Science Center, Beijing 100191, China*

Tel.: +86-10-82801890

E-mail address: pannay26@bjmu.edu.cn

Supplementary figures and figure legends

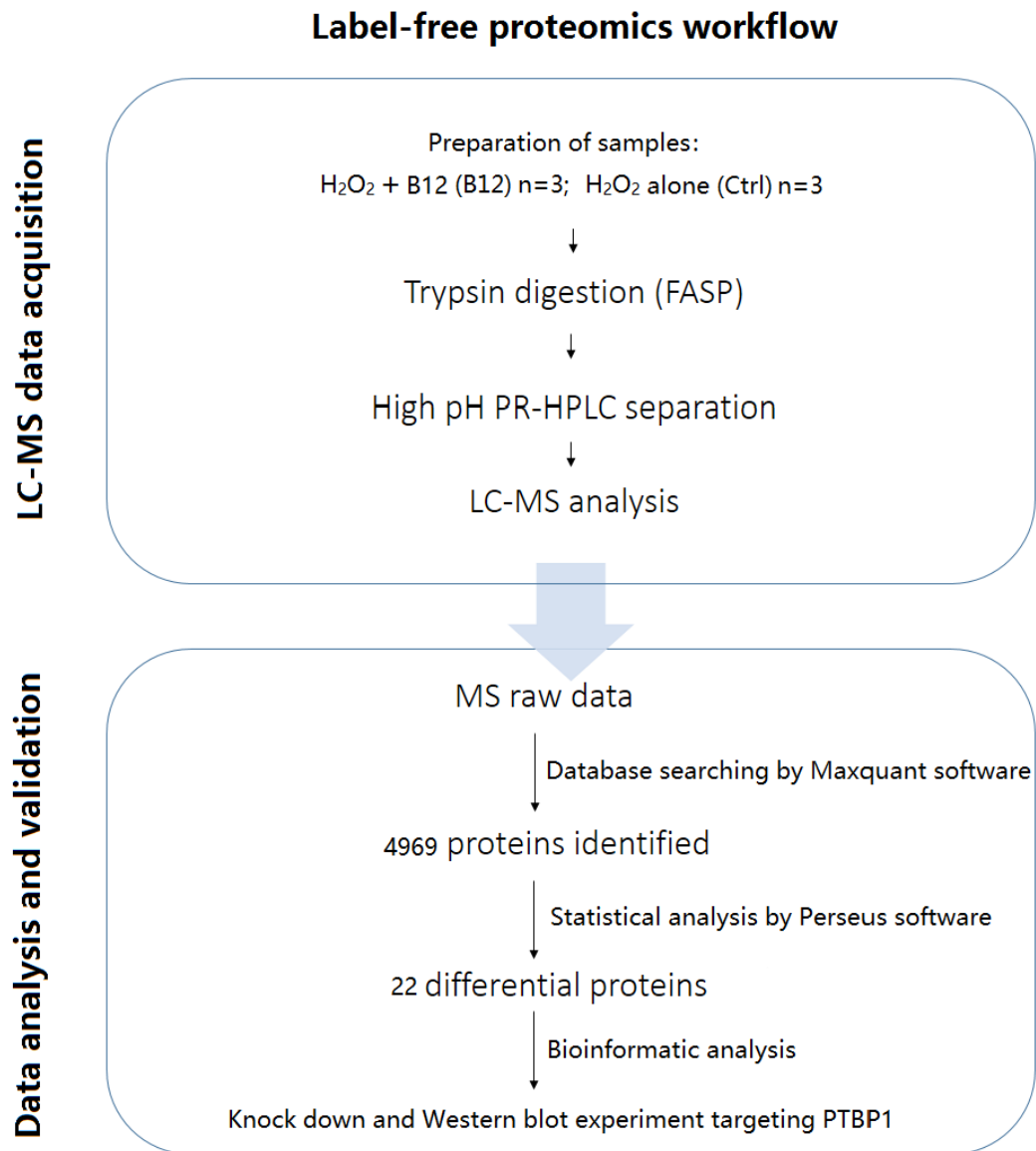


Figure S1 | . The workflow flowchart of the proteomic study.

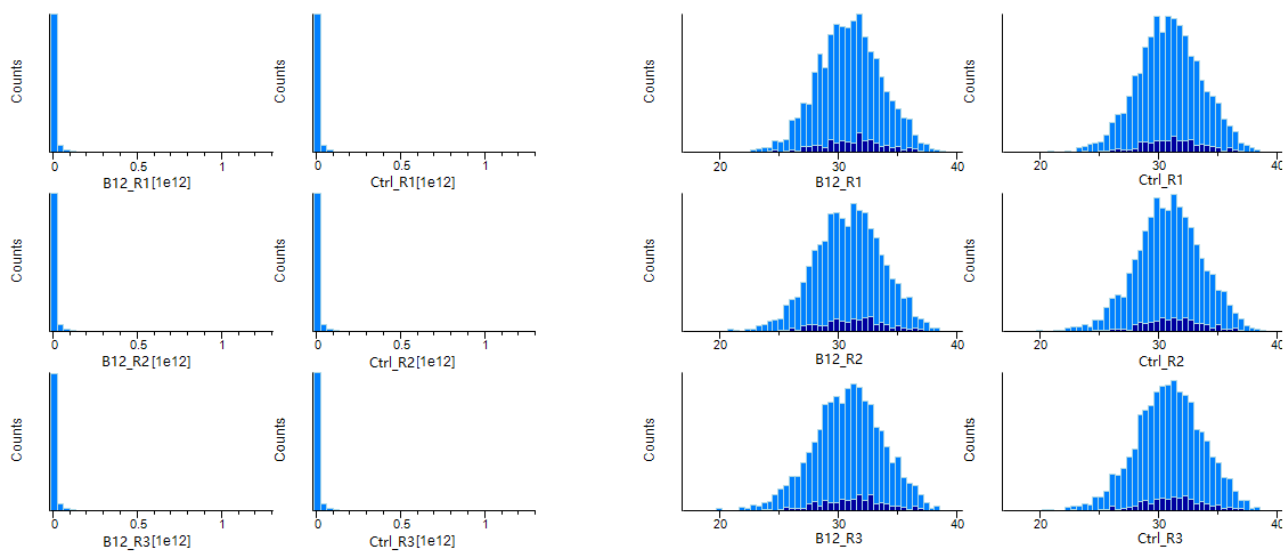


Figure S2 | Histograms of the LfQ intensity of proteins before (left) and after (right) a logarithm transformation (base 2). Blue represents total proteins identified in SH-SY5Y cells and dark blue represents proteins that had a t-test p-value less than 0.05 between the two groups (B12 and Ctrl group).

List names	number of elements	number of unique elements
Bioreplicate_1	4215	4215
Bioreplicate_2	4331	4331
Bioreplicate_3	4546	4546
Overall number of unique elements		4958

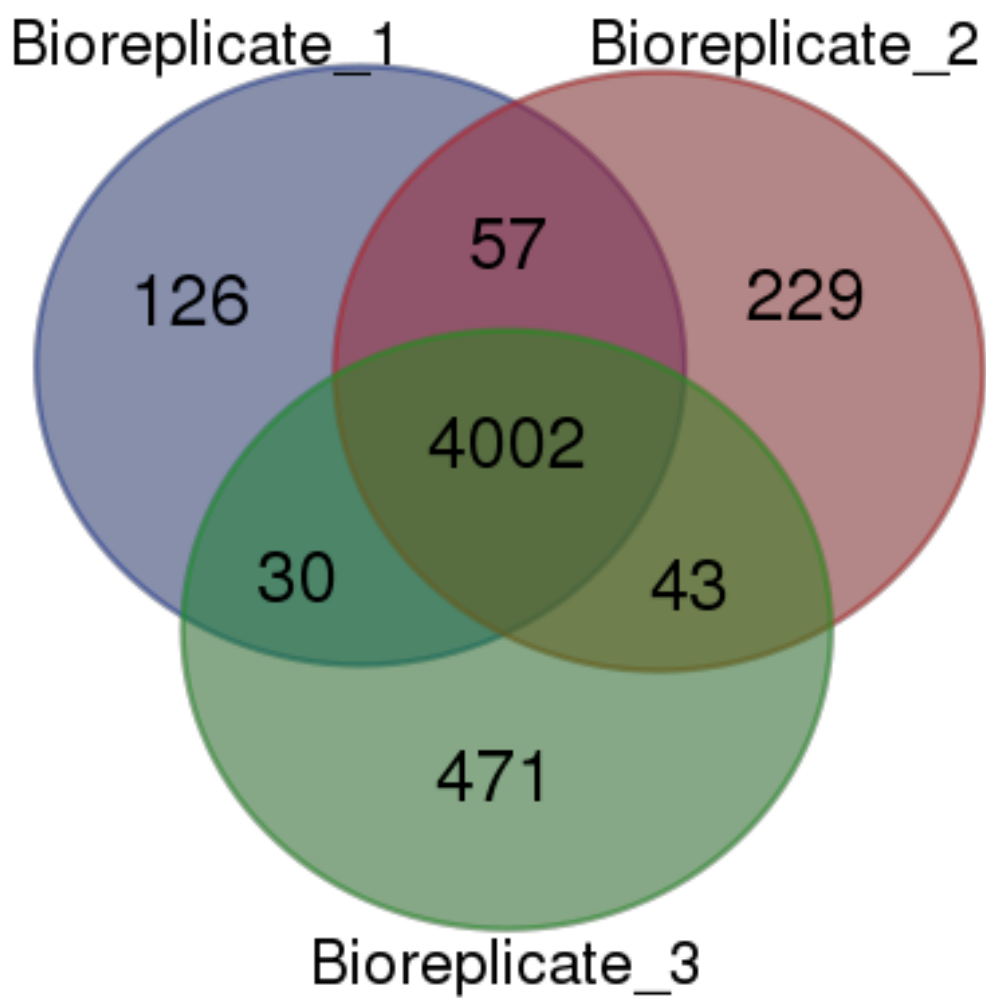


Figure S3 | Venn diagram of identified proteins in the three biological replicates.

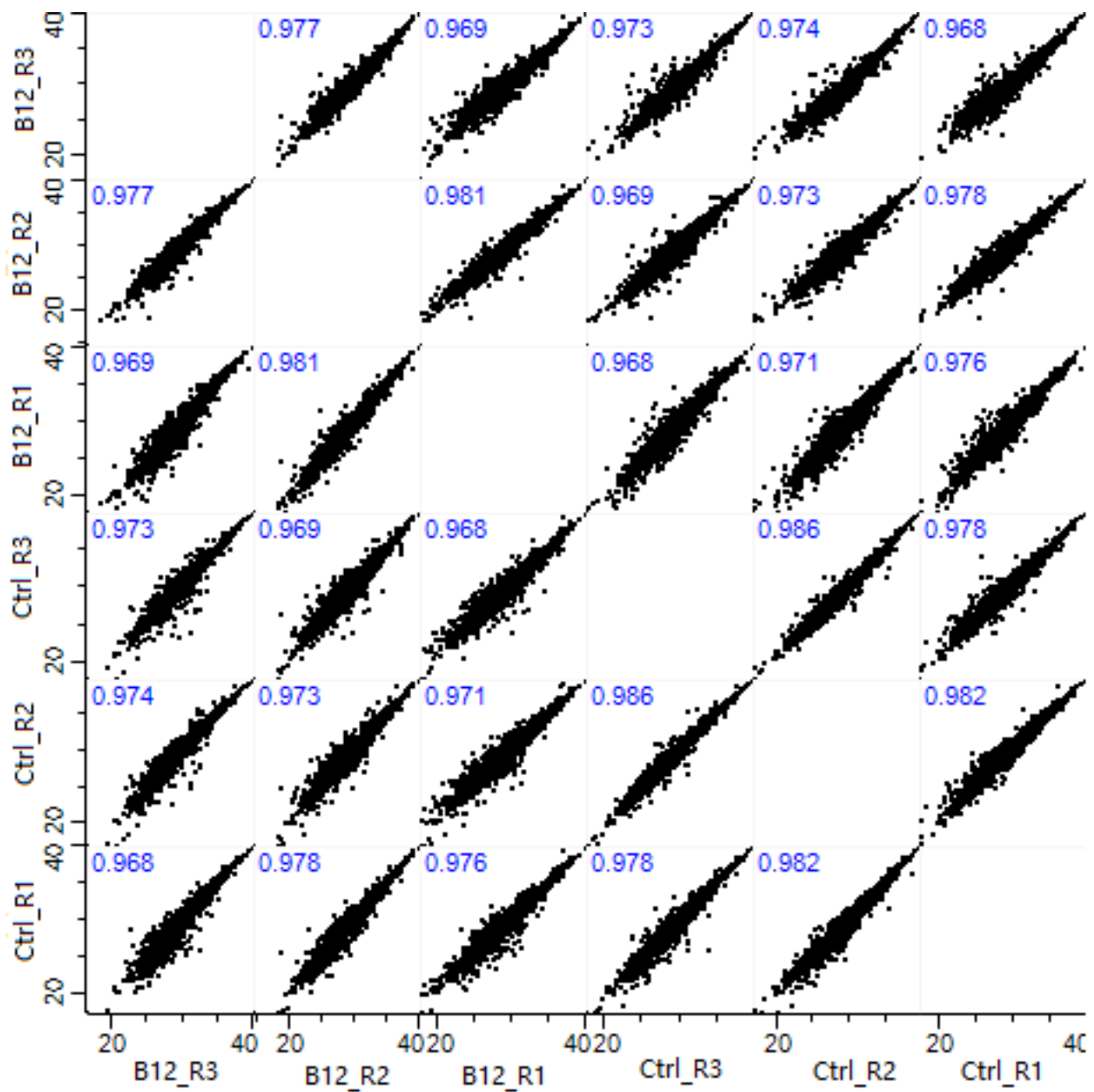


Figure S4 | Scatter plots of log₂ LFQ intensities of identified proteins of all samples. The number in plots was the Pearson correlation coefficient.