

Chronic myeloid leukemia incidence, survival and accessibility of tyrosine kinase inhibitors: a report from population-based Lithuanian haematological disease registry 2000-2013

Tomas Beinortas, Ilma Tavorienė, Tadas Žvirblis, Rolandas Gerbutavičius, Mindaugas Jurgutis, Laimonas Griškevičius

Supplement

Lithuanian HESS registry

Lithuania has a national haematological disease monitoring system (HESS), which collects data from 2000 and covers the entire country, with a population of 3 million. Patients with haematological malignancies are managed in 5 centres across the country and all physicians and pathologists are obliged to report all newly diagnosed CML cases to HESS Registry. HESS contains data on age, sex, ICD-10 code, date of diagnosis, clinical symptoms, laboratory test, risk group, treatment, Ph and BCR-ABL status (both mandatory from 2010) of CML. Through unique personal ID, HESS is also linked to the national death registry, which allows further validation of data. All Lithuanians are covered by national healthcare insurance and haematological diseases are treated in public healthcare system. Therefore underreporting to HESS registry is unlikely. All patients, who were diagnosed with CML (ICD-10 code 92.1) between January 1st 2000 and December 31st 2013, were entered into the study. There was no age restriction or other exclusion criteria.

Statistical methods

Crude and age standardize rates according to world population (CR and ASR (W), respectively) were calculated for incidence, prevalence and mortality. CR was represented as the number of patients per 100 000 inhabitants per year in Lithuania [1]. ASR (W) was defined as a weighted mean of the age-specific rates [2]; the weights were taken from the standard world population [3]. Incidence rate was defined as the number of new CML cases that occurred during a given time period [1]. Mortality rate was defined as a number of deaths from any cause during a given time period [1].

Relative survival rate (RSR) was defined as observed survival in CML group divided by the expected survival of a comparable group from general population [4]. One-, five- and ten-year RSRs with 95% confidence intervals (95% CI) were estimated. Survival time was calculated as the time from the date of diagnosis to death; 31st of December 2014 was set as censoring date for alive patients.

Survival trends were evaluated by Kaplan-Meier method. Log-rank test was used evaluate statistical difference between Kaplan-Meier curves.

All statistics were performed by Statistical Analysis System (SAS) package version 9.2. A two-tailed p-value less than 0.05 was considered significant.

Table S1. Incidence Crude Rate of Chronic Myeloid Leukemia according to age group (per 100 000 per year) (10 age groups).

Age groups	Age group, years										Overall
	0-14	15-39	40-44	45-49	50-54	55-59	60-64	65-69	70-74	75+	
All population											
2000	0.00	0.31	0.74	1.37	2.03	2.18	2.18	4.18	4.83	5.89	1.31
2001	0.00	0.95	1.87	0.46	2.54	2.74	3.28	3.60	8.32	4.31	1.72
2002	0.00	0.48	0.73	0.45	1.48	1.72	2.18	4.81	4.81	4.65	1.24
2003	0.16	0.88	2.19	1.74	0.49	4.09	2.75	6.65	6.20	8.37	2.08
2004	0.00	0.40	2.20	0.41	2.43	1.14	0.56	2.41	4.86	5.30	1.22
Average (2000-2004)	0.03	0.60	1.55	0.89	1.79	2.37	2.19	4.33	5.80	5.70	1.51
2005	0.00	0.40	0.74	0.80	0.97	2.78	0.58	2.42	3.48	5.71	1.11
2006	0.18	0.73	1.15	2.32	1.92	1.63	0.59	4.87	4.18	2.77	1.38
2007	0.19	0.32	0.39	1.89	2.35	1.58	3.72	3.66	4.88	6.28	1.54
2008	0.00	0.98	0.40	1.13	1.82	1.56	3.18	1.84	0.70	5.24	1.31
2009	0.00	0.41	0.00	1.14	0.87	1.04	1.25	3.15	2.80	3.42	0.93
Average (2005-2009)	0.07	0.57	0.54	1.46	1.59	1.72	1.86	3.19	3.21	4.68	1.25
2010	0.00	0.43	0.84	2.34	0.00	2.08	1.83	2.59	1.40	2.52	0.97
2011	0.00	0.90	1.38	0.88	1.28	1.62	2.42	0.68	1.39	3.15	1.16
2012	0.00	0.72	1.40	0.91	1.68	2.65	1.77	2.15	6.28	1.93	1.37
2013	0.00	0.42	0.95	0.47	0.42	1.53	0.58	0.73	0.71	1.51	0.61
Average (2010-2013)	0.00	0.62	1.14	1.15	0.85	1.97	1.65	1.54	2.45	2.28	1.03
Average (2000-2013)	0.04	0.59	1.07	1.16	1.45	2.02	1.92	3.12	3.92	4.36	1.28
Males											
2000	0.00	0.16	0.77	0.96	4.42	3.72	3.89	9.07	5.72	7.49	1.59
2001	0.00	0.47	2.33	0.97	3.33	2.49	5.21	3.04	17.26	7.54	1.90
2002	0.00	0.47	0.00	0.95	1.08	1.30	1.30	9.15	3.77	5.42	1.11
2003	0.00	1.43	3.77	2.74	0.00	3.98	2.62	10.75	5.67	13.69	2.48
2004	0.00	0.48	2.27	0.00	3.17	2.60	0.00	4.61	9.53	8.35	1.50
Average (2000-2004)	0.00	0.60	1.83	1.12	2.40	2.82	2.60	7.32	8.39	8.50	1.72
2005	0.00	0.48	0.76	0.84	1.05	2.53	1.38	3.08	3.84	8.21	1.13
2006	0.00	0.48	1.57	2.46	2.07	1.23	0.00	3.11	5.79	4.75	1.20
2007	0.37	0.64	0.00	2.40	3.06	2.39	4.47	7.81	11.61	9.22	2.10
2008	0.00	1.13	0.82	0.79	1.98	1.18	3.05	3.15	0.00	5.98	1.28
2009	0.00	0.65	0.00	2.39	0.00	1.17	1.51	4.87	1.95	7.33	1.16
Average (2005-2009)	0.07	0.68	0.63	1.78	1.63	1.70	2.08	4.40	4.64	7.10	1.37
2010	0.00	0.51	0.86	0.82	0.00	2.34	1.47	3.33	3.92	7.20	1.11
2011	0.00	1.39	1.91	0.91	0.92	1.20	2.87	1.75	0.00	4.04	1.29
2012	0.00	0.41	1.94	0.95	1.80	2.36	2.79	1.83	9.60	2.63	1.38
2013	0.00	0.83	0.99	0.00	0.00	1.13	1.38	1.86	1.95	3.87	0.88
Average (2010-2013)	0.00	0.79	1.43	0.67	0.68	1.76	2.13	2.19	3.87	4.44	1.17

Average (2000- 2013)	0.03	0.68	1.29	1.23	1.64	2.12	2.28	4.82	5.76	6.84	1.44
Females											
2000	0.00	0.47	0.72	1.74	0.00	0.97	0.94	0.99	4.32	5.26	1.07
2001	0.00	1.43	1.44	0.00	1.88	2.93	1.89	3.96	3.26	3.02	1.56
2002	0.00	0.48	1.41	0.00	1.83	2.04	2.82	1.98	5.41	4.34	1.35
2003	0.33	0.32	0.70	0.83	0.90	4.18	2.84	3.98	6.50	6.22	1.74
2004	0.00	0.32	2.13	0.79	1.80	0.00	0.97	0.99	2.18	4.06	0.98
Average (2000- 2004)	0.07	0.60	1.28	0.67	1.28	2.02	1.89	2.38	4.33	4.58	1.34
2005	0.00	0.32	0.72	0.76	0.90	2.98	0.00	1.99	3.28	4.68	1.10
2006	0.37	0.98	0.75	2.20	1.78	1.94	1.02	6.00	3.27	1.95	1.55
2007	0.00	0.00	0.77	1.44	1.75	0.94	3.19	1.00	1.09	5.06	1.05
2008	0.00	0.82	0.00	1.43	1.69	1.86	3.28	1.01	1.09	4.93	1.34
2009	0.00	0.17	0.00	0.00	1.62	0.93	1.07	2.06	3.27	1.81	0.73
Average (2005- 2009)	0.07	0.46	0.45	1.17	1.55	1.73	1.71	2.41	2.40	3.69	1.15
2010	0.00	0.35	0.81	3.75	0.00	1.87	2.08	2.12	0.00	0.59	0.85
2011	0.00	0.40	0.89	0.84	1.60	1.95	2.09	0.00	2.18	2.79	1.04
2012	0.00	1.04	0.90	0.87	1.57	2.88	1.02	2.35	4.38	1.63	1.37
2013	0.00	0.00	0.92	0.89	0.79	1.85	0.00	0.00	0.00	0.54	0.38
Average (2010- 2013)	0.00	0.45	0.88	1.59	0.99	2.14	1.30	1.12	1.64	1.39	0.91
Average (2000- 2013)	0.05	0.51	0.87	1.11	1.29	1.95	1.66	2.03	2.87	3.35	1.15

Table S2. Incidence Crude Rate of Chronic Myeloid Leukemia according to age group (per 100 000 per year) (5 age groups).

Age groups	Age group, years					Overall
	0-17	18-45	46-60	61-75	76+	
All population						
2000	0.12	0.42	1.71	3.77	6.85	1.31
2001	0.00	1.21	2.04	5.05	4.13	1.72
2002	0.00	0.57	1.19	4.00	5.08	1.24
2003	0.13	1.28	2.02	5.46	8.09	2.08
2004	0.00	0.78	1.32	2.74	5.27	1.22
Average (2000-2004)	0.05	0.85	1.66	4.20	5.88	1.51
2005	0.14	0.43	1.45	2.13	6.23	1.11
2006	0.14	0.93	2.05	3.25	2.51	1.38
2007	0.15	0.58	1.85	3.95	6.34	1.54
2008	0.15	1.02	1.21	2.00	5.69	1.31
2009	0.16	0.29	1.04	2.70	3.24	0.93
Average (2005-2009)	0.15	0.65	1.52	2.81	4.80	1.25
2010	0.00	0.52	1.66	2.04	2.23	0.97
2011	0.18	0.96	1.41	1.81	2.55	1.16
2012	0.18	0.89	1.72	3.18	2.08	1.37
2013	0.19	0.45	0.78	0.68	1.68	0.61
Average (2010-2013)	0.14	0.71	1.39	1.93	2.14	1.03
Average (2000-2013)	0.11	0.74	1.53	3.06	4.43	1.28
Male						
2000	0.00	0.29	3.01	6.47	8.57	1.59
2001	0.00	0.86	2.61	8.05	6.38	1.90
2002	0.00	0.43	1.11	4.81	6.14	1.11
2003	0.00	2.15	1.84	7.48	11.69	2.48
2004	0.00	0.86	1.80	4.31	9.46	1.50
Average (2000-2004)	0.00	0.92	2.07	6.22	8.45	1.72
2005	0.27	0.43	1.41	2.73	9.30	1.13
2006	0.00	0.72	2.06	3.34	3.57	1.20
2007	0.29	0.87	2.02	7.94	10.38	2.10
2008	0.29	1.17	0.99	2.30	6.72	1.28
2009	0.30	0.44	1.29	2.90	8.20	1.16
Average (2005-2009)	0.23	0.73	1.55	3.84	7.63	1.37
2010	0.00	0.60	0.95	3.48	6.30	1.11
2011	0.34	1.40	1.01	1.74	4.49	1.29
2012	0.00	0.72	2.02	4.07	2.92	1.38
2013	0.36	0.73	0.34	1.75	4.38	0.88
Average (2010-2013)	0.18	0.86	1.08	2.76	4.52	1.17
Average (2000-2013)	0.13	0.83	1.61	4.38	7.04	1.44
Female						

2000	0.24	0.56	0.63	2.06	6.15	1.07
2001	0.00	1.54	1.56	3.12	3.27	1.56
2002	0.00	0.70	1.25	3.47	4.68	1.35
2003	0.26	0.42	2.18	4.15	6.71	1.74
2004	0.00	0.70	0.92	1.73	3.65	0.98
Average (2000-2004)	0.10	0.78	1.31	2.91	4.89	1.34
2005	0.00	0.43	1.49	1.75	5.04	1.10
2006	0.29	1.14	2.05	3.19	2.10	1.55
2007	0.00	0.29	1.71	1.43	4.76	1.05
2008	0.00	0.87	1.40	1.82	5.29	1.34
2009	0.00	0.15	0.83	2.56	1.29	0.73
Average (2005-2009)	0.06	0.58	1.50	2.15	3.70	1.15
2010	0.00	0.45	2.29	1.11	0.62	0.85
2011	0.00	0.52	1.75	1.86	1.78	1.04
2012	0.37	1.07	1.46	2.61	1.74	1.37
2013	0.00	0.18	1.16	0.00	0.59	0.38
Average (2010-2013)	0.09	0.56	1.67	1.40	1.18	0.91
Average (2000-2013)	0.08	0.64	1.48	2.20	3.41	1.15

Table S3. Incidence ASR (W) of Chronic Myeloid Leukemia (per 100 000 per year).

Overall	All population	Males	Females
2000	0.82	1.05	0.67
2001	1.19	1.30	1.18
2002	0.79	0.77	0.83
2003	1.40	1.83	1.05
2004	0.80	1.05	0.63
Average (2000-2004)	1.00	1.20	0.87
2005	0.72	0.80	0.66
2006	1.02	0.87	1.17
2007	0.99	1.50	0.59
2008	0.96	1.02	0.91
2009	0.60	0.83	0.42
Average (2005-2009)	0.86	1.00	0.75
2010	0.69	0.79	0.65
2011	0.87	1.09	0.67
2012	0.96	0.95	1.01
2013	0.46	0.69	0.27
Average (2010-2013)	0.75	0.88	0.65
Overall	0.88	1.04	0.76

Table S4. Mortality Crude Rate of Chronic Myeloid Leukemia according to age group (per 100 000 per year).

Age groups	Age group, years										Overall
	0-14	15-39	40-44	45-49	50-54	55-59	60-64	65-69	70-74	75+	
All population											
2000	0.00	0.00	0.00	0.00	0.51	0.00	0.54	1.19	1.38	1.61	0.26
2001	0.00	0.24	0.00	0.00	0.00	1.10	2.74	3.60	8.32	3.23	0.98
2002	0.00	0.08	0.37	0.00	0.99	0.57	0.00	4.21	2.75	4.65	0.72
2003	0.00	0.32	0.00	0.87	0.98	0.58	2.20	3.02	4.13	6.40	1.07
2004	0.00	0.24	0.37	0.00	0.97	3.43	1.13	1.21	3.47	7.71	1.08
Average (2000-2004)	0.00	0.18	0.15	0.17	0.69	1.14	1.32	2.65	4.01	4.72	0.82
2005	0.17	0.08	0.74	0.40	0.00	1.11	2.31	4.83	2.79	3.33	0.88
2006	0.00	0.24	0.76	0.39	0.48	0.54	1.19	0.00	3.48	2.77	0.62
2007	0.19	0.40	1.57	0.38	0.94	2.11	1.24	1.83	3.49	3.14	1.01
2008	0.00	0.33	0.00	1.50	0.91	1.04	0.64	1.84	3.50	5.24	0.98
2009	0.00	0.00	0.41	0.00	0.44	1.04	1.88	1.89	1.40	3.85	0.63
Average (2005-2009)	0.07	0.21	0.70	0.53	0.55	1.17	1.45	2.08	2.93	3.67	0.82
2010	0.00	0.09	0.42	0.78	1.69	0.52	0.00	3.24	2.10	5.46	0.91
2011	0.00	0.10	0.92	0.44	0.00	0.54	1.21	2.05	4.16	2.76	0.76
2012	0.00	0.10	0.00	0.00	0.00	0.53	1.18	1.43	2.79	3.47	0.64
2013	0.00	0.10	1.43	0.00	0.00	0.00	0.58	1.46	0.71	1.89	0.44
Average (2010-2013)	0.00	0.10	0.69	0.31	0.42	0.40	0.74	2.05	2.44	3.40	0.69
Average (2000-2013)	0.03	0.17	0.50	0.34	0.56	0.94	1.20	2.27	3.18	3.96	0.78
Males											
2000	0.00	0.00	0.00	0.00	1.10	0.00	0.00	3.02	1.91	3.75	0.37
2001	0.00	0.16	0.00	0.00	0.00	1.25	5.21	3.04	17.26	5.65	1.23
2002	0.00	0.16	0.76	0.00	2.16	0.00	0.00	9.15	1.89	7.23	0.93
2003	0.00	0.16	0.00	0.00	1.06	0.00	5.23	7.68	5.67	10.26	1.24
2004	0.00	0.32	0.00	0.00	1.06	5.20	1.34	3.07	3.81	10.02	1.12
Average (2000-2004)	0.00	0.16	0.15	0.00	1.08	1.29	2.36	5.19	6.11	7.38	0.98
2005	0.00	0.16	1.53	0.00	0.00	1.27	0.00	7.71	3.84	4.93	0.88
2006	0.00	0.32	0.78	0.82	1.04	1.23	1.42	0.00	1.93	4.75	0.70
2007	0.37	0.80	1.61	0.00	1.02	2.39	1.49	3.12	5.81	3.07	1.21
2008	0.00	0.32	0.00	2.37	1.98	1.18	1.53	0.00	5.85	4.49	0.96
2009	0.00	0.00	0.00	0.00	0.00	0.00	0.00	3.24	1.95	7.33	0.51
Average (2005-2009)	0.07	0.32	0.78	0.64	0.81	1.21	0.89	2.81	3.88	4.91	0.85
2010	0.00	0.17	0.86	1.63	0.92	1.17	0.00	5.00	3.92	12.97	1.31
2011	0.00	0.20	0.00	0.00	0.00	1.20	0.00	3.50	5.72	2.69	0.64
2012	0.00	0.20	0.00	0.00	0.00	0.00	2.79	1.83	1.92	5.26	0.65
2013	0.00	0.21	1.98	0.00	0.00	0.00	1.38	3.73	0.00	3.87	0.66
Average (2010-2013)	0.00	0.20	0.71	0.41	0.23	0.59	1.04	3.52	2.89	6.20	0.82
Average (2000-2013)	0.03	0.23	0.54	0.34	0.74	1.06	1.46	3.86	4.39	6.16	0.89
Females											
2000	0.00	0.00	0.00	0.00	0.00	0.00	0.94	0.00	1.08	0.75	0.16
2001	0.00	0.32	0.00	0.00	0.00	0.98	0.94	3.96	3.26	2.26	0.76
2002	0.00	0.00	0.00	0.00	0.00	1.02	0.00	0.99	3.24	3.61	0.54
2003	0.00	0.48	0.00	1.65	0.90	1.05	0.00	0.00	3.25	4.84	0.92
2004	0.00	0.16	0.71	0.00	0.90	2.05	0.97	0.00	3.27	6.77	1.04

Age groups	Age group, years										Overall
	0-14	15-39	40-44	45-49	50-54	55-59	60-64	65-69	70-74	75+	
Average (2000-2004)	0.00	0.19	0.14	0.33	0.36	1.02	0.57	0.99	2.82	3.65	0.68
2005	0.36	0.00	0.00	0.76	0.00	0.99	3.97	2.98	2.19	2.68	0.88
2006	0.00	0.16	0.75	0.00	0.00	0.00	1.02	0.00	4.37	1.95	0.55
2007	0.00	0.00	1.53	0.72	0.87	1.88	1.06	1.00	2.18	3.17	0.83
2008	0.00	0.33	0.00	0.72	0.00	0.93	0.00	3.02	2.19	5.55	1.00
2009	0.00	0.00	0.80	0.00	0.81	1.86	3.22	1.03	1.09	2.41	0.73
Average (2005-2009)	0.07	0.10	0.62	0.44	0.34	1.13	1.85	1.61	2.40	3.15	0.80
2010	0.00	0.00	0.00	0.00	2.35	0.00	0.00	2.12	1.09	2.37	0.57
2011	0.00	0.00	1.77	0.84	0.00	0.00	2.09	1.12	3.26	2.79	0.86
2012	0.00	0.00	0.00	0.00	0.00	0.96	0.00	1.17	3.29	2.72	0.62
2013	0.00	0.00	0.92	0.00	0.00	0.00	0.00	0.00	1.11	1.07	0.25
Average (2010-2013)	0.00	0.00	0.67	0.21	0.59	0.24	0.52	1.10	2.19	2.24	0.58
Average (2000-2013)	0.03	0.10	0.46	0.33	0.42	0.84	1.02	1.24	2.49	3.07	0.69

Table S5. Mortality Crude Rate of Chronic Myeloid Leukemia according to age group (per 100 000 per year) (5 age groups).

Age groups	Age group, years					Overall
	0-17	18-45	46-60	61-75	76+	
All population						
2000	0.00	0.00	0.17	1.05	1.87	0.26
2001	0.12	0.14	0.51	4.84	2.95	0.98
2002	0.00	0.14	0.51	2.31	5.08	0.72
2003	0.00	0.35	0.67	3.36	6.47	1.07
2004	0.00	0.28	1.32	2.11	7.90	1.08
Average (2000-2004)	0.02	0.18	0.64	2.73	4.85	0.82
2005	0.14	0.21	0.65	3.20	3.63	0.88
2006	0.00	0.36	0.47	1.73	2.51	0.62
2007	0.15	0.72	0.93	2.19	3.42	1.01
2008	0.15	0.29	1.06	2.00	5.69	0.98
2009	0.00	0.07	0.74	1.57	3.71	0.63
Average (2005-2009)	0.09	0.33	0.77	2.14	3.79	0.82
2010	0.16	0.15	0.90	1.81	5.81	0.91
2011	0.00	0.26	0.62	2.49	2.13	0.76
2012	0.00	0.09	0.16	1.82	3.74	0.64
2013	0.00	0.36	0.00	0.91	2.10	0.44
Average (2010-2013)	0.04	0.22	0.42	1.76	3.45	0.69
Average (2000-2013)	0.05	0.25	0.62	2.24	4.07	0.78
Male						
2000	0.00	0.00	0.38	1.62	4.29	0.37
2001	0.00	0.14	0.75	8.05	4.25	1.23
2002	0.00	0.29	0.74	3.74	8.19	0.93
2003	0.00	0.14	0.37	6.95	9.74	1.24
2004	0.00	0.29	1.80	2.70	11.35	1.12
Average (2000-2004)	0.00	0.17	0.81	4.61	7.56	0.98
2005	0.00	0.43	0.35	3.83	5.58	0.88
2006	0.00	0.43	1.03	1.67	3.57	0.70
2007	0.29	1.01	1.01	3.40	3.46	1.21
2008	0.29	0.29	1.64	2.30	5.04	0.96
2009	0.00	0.00	0.00	1.74	8.20	0.51
Average (2005-2009)	0.12	0.43	0.81	2.59	5.17	0.85
2010	0.32	0.30	0.95	2.90	14.18	1.31
2011	0.00	0.18	0.34	3.48	1.50	0.64
2012	0.00	0.18	0.00	2.33	5.85	0.65
2013	0.00	0.55	0.00	1.75	4.38	0.66
Average (2010-2013)	0.08	0.30	0.32	2.62	6.48	0.82
Average (2000-2013)	0.06	0.30	0.67	3.32	6.40	0.89
Female						

Age groups	Age group, years					Overall
	0-17	18-45	46-60	61-75	76+	
2000	0.00	0.00	0.00	0.69	0.88	0.16
2001	0.24	0.14	0.31	2.77	2.45	0.76
2002	0.00	0.00	0.31	1.39	3.90	0.54
2003	0.00	0.56	0.93	1.04	5.22	0.92
2004	0.00	0.28	0.92	1.73	6.57	1.04
Average (2000-2004)	0.05	0.20	0.49	1.52	3.80	0.68
2005	0.28	0.00	0.90	2.80	2.88	0.88
2006	0.00	0.29	0.00	1.77	2.10	0.55
2007	0.00	0.43	0.86	1.43	3.40	0.83
2008	0.00	0.29	0.56	1.82	5.95	1.00
2009	0.00	0.15	1.38	1.47	1.94	0.73
Average (2005-2009)	0.06	0.23	0.74	1.86	3.25	0.80
2010	0.00	0.00	0.86	1.11	2.50	0.57
2011	0.00	0.35	0.87	1.86	2.38	0.86
2012	0.00	0.00	0.29	1.49	2.91	0.62
2013	0.00	0.18	0.00	0.37	1.18	0.25
Average (2010-2013)	0.00	0.13	0.51	1.21	2.24	0.58
Average (2000-2013)	0.04	0.19	0.58	1.55	3.16	0.69

Table S6. Mortality ASR (W) of Chronic Myeloid Leukemia (per 100 000 per year).

Overall	All population	Males	Females
2000	0.13	0.22	0.08
2001	0.55	0.74	0.44
2002	0.40	0.61	0.25
2003	0.64	0.76	0.59
2004	0.64	0.77	0.55
Average (2000-2004)	0.47	0.62	0.38
2005	0.53	0.57	0.52
2006	0.40	0.51	0.31
2007	0.72	0.98	0.48
2008	0.60	0.68	0.54
2009	0.35	0.29	0.43
Average (2005-2009)	0.52	0.61	0.46
2010	0.51	0.82	0.29
2011	0.42	0.40	0.46
2012	0.32	0.40	0.26
2013	0.28	0.47	0.13
Average (2010-2013)	0.38	0.52	0.29
Overall	0.46	0.59	0.38

Table S7. Relative Survival Rate of Chronic Myeloid Leukemia during 2000-2013 according to age group (3 age groups).

Population at 2000-2013 period									
Age group, years	1 year RS								
	All population			Males			Females		
	RS	95% CI		RS	95% CI		RS	95% CI	
0-17	0.80	0.41	0.95	0.67	0.19	0.91	1.00	-	-
18-60	0.91	0.87	0.94	0.90	0.84	0.94	0.92	0.86	0.96
61+	0.56	0.50	0.61	0.54	0.45	0.61	0.58	0.49	0.65
Overall	0.72	0.68	0.76	0.71	0.65	0.76	0.74	0.68	0.79
5 year RS									
0-17	0.48	0.16	0.75	0.48	0.09	0.80	0.50	0.06	0.85
18-60	0.73	0.67	0.79	0.74	0.65	0.82	0.73	0.63	0.80
61+	0.27	0.21	0.34	0.29	0.21	0.39	0.26	0.18	0.35
Overall	0.49	0.45	0.54	0.51	0.44	0.57	0.48	0.41	0.55
10 year RS									
0-17	-	-	-	-	-	-	-	-	-
18-60	0.58	0.49	0.66	0.60	0.47	0.71	0.56	0.44	0.68
61+	0.14	0.07	0.23	0.07	0.01	0.26	0.17	0.09	0.27
Overall	0.36	0.31	0.42	0.37	0.28	0.46	0.36	0.28	0.44
Population at 2000-2004 period									
Age groups	1 year RS								
	All population			Males			Females		
	RS	95% CI		RS	95% CI		RS	95% CI	
0-17 years	1.00	-	-	-	-	-	1.00	-	-
18-60 years	0.88	0.80	0.93	0.86	0.74	0.93	0.90	0.77	0.96
61+ years	0.40	0.32	0.48	0.35	0.24	0.46	0.46	0.34	0.57
Overall	0.61	0.55	0.67	0.58	0.49	0.66	0.65	0.55	0.73
5 year RS									
0-17 years	-	-	-	-	-	-	-	-	-
18-60 years	0.58	0.47	0.67	0.55	0.41	0.68	0.60	0.45	0.73
61+ years	0.14	0.09	0.22	0.12	0.05	0.23	0.17	0.09	0.28
Overall	0.33	0.27	0.40	0.32	0.24	0.41	0.35	0.26	0.44
Population at 2005-2009 period									
Age groups	1 year RS								
	All population			Males			Females		
	RS	95% CI		RS	95% CI		RS	95% CI	
0-17 years	0.60	0.13	0.88	0.50	0.06	0.85	1.00	-	-
18-60 years	0.92	0.84	0.96	0.91	0.78	0.97	0.94	0.81	0.98
61+ years	0.71	0.61	0.80	0.71	0.56	0.83	0.72	0.57	0.82
Overall	0.81	0.74	0.86	0.79	0.70	0.87	0.82	0.73	0.89
5 year RS									
0-17 years	0.40	0.05	0.76	0.25	0.01	0.67	1.00	-	-
18-60 years	0.81	0.71	0.88	0.84	0.69	0.93	0.78	0.62	0.88
61+ years	0.37	0.26	0.48	0.40	0.25	0.57	0.34	0.21	0.48
Overall	0.58	0.50	0.65	0.61	0.49	0.71	0.55	0.44	0.65
Population at 2010-2013 period									
Age groups	1 year RS								
	All population			Males			Females		
	RS	95% CI		RS	95% CI		RS	95% CI	
0-17 years	1.00	-	-	1.00	-	-	1.00	-	-
18-60 years	0.95	0.86	0.98	0.98	0.81	1.00	0.92	0.77	0.98

61+ years	0.65	0.50	0.77	0.69	0.48	0.84	0.60	0.36	0.78
Overall	0.83	0.74	0.89	0.85	0.72	0.93	0.80	0.67	0.89
5 year RS									
0-17 years	-	-	-	-	-	-	-	-	-
18-60 years	-	-	-	-	-	-	-	-	-
61+ years	-	-	-	-	-	-	-	-	-
Overall	-	-	-	-	-	-	-	-	-

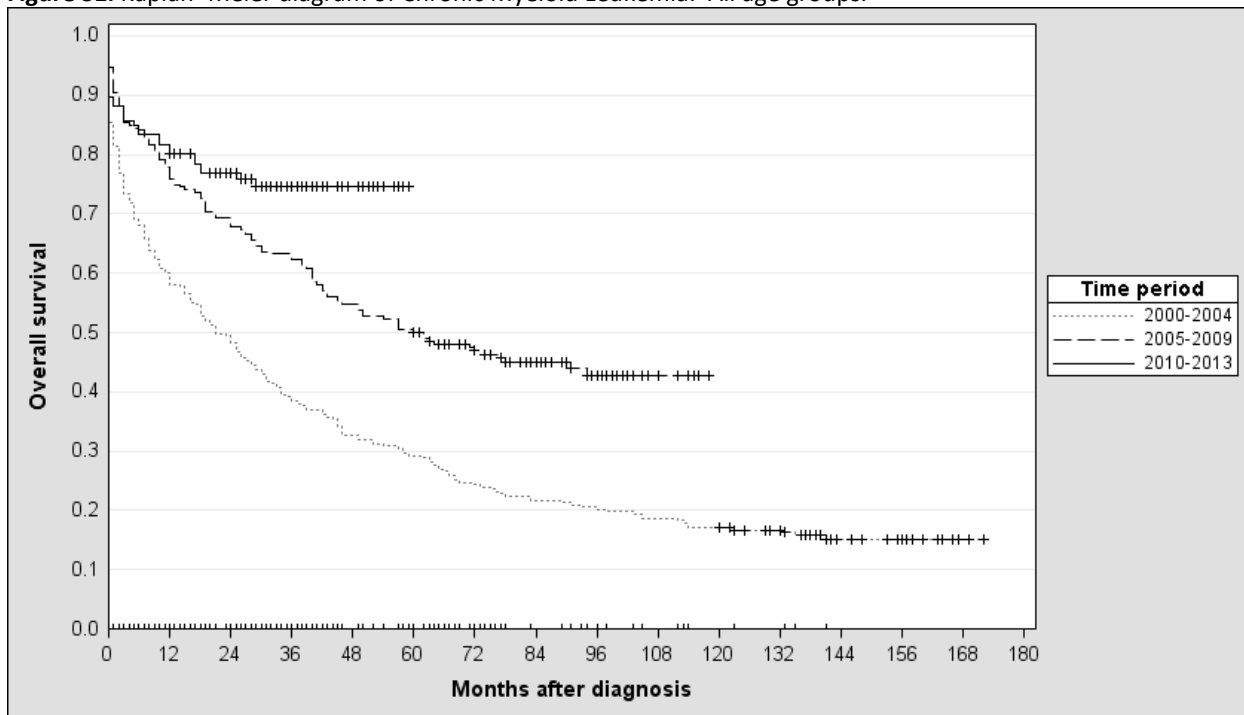
Table S8. Kaplan–Meier analysis of Chronic Myeloid Leukemia.

All patients				
Period	No. of cases	Median survival	95% CI for median survival	
			Lower Bound	Upper Bound
2000-2004	263	21	14	28
2005-2009	212	60	32	88
2010-2013	126	N/R	N/R	N/R
0-17 year old patients				
Period	No. of cases	Median survival	95% CI for median survival	
			Lower Bound	Upper Bound
2000-2004	2	16	4	28
2005-2009	5	17	2	32
2010-2013	3	N/R	N/R	N/R
18-60 year old patients				
Period	No. of cases	Median survival	95% CI for median survival	
			Lower Bound	Upper Bound
2000-2004	107	69	46	92
2005-2009	91	N/R	N/R	N/R
2010-2013	66	N/R	N/R	N/R
Over 60 year old patients				
Period	No. of cases	Median survival	95% CI for median survival	
			Lower Bound	Upper Bound
2000-2004	154	7	4	10
2005-2009	116	28	16	40
2010-2013	57	29	N/R	N/R

Table S9. ECOG performance score of CML patients presenting during 2010-2013 period

Age	ECOG					Total
	0	1	2	3	4	
0-44	19 (63%)	11 (37%)	0 (0%)	0 (0%)	0 (0%)	30 (33%)
45-54	10 (67%)	2 (13%)	1 (7%)	2 (13%)	0 (0%)	15 (16%)
55-64	13 (54%)	8 (33%)	2 (8%)	1 (4%)	0 (0%)	24 (26%)
65-74	4 (29%)	9 (64%)	1 (7%)	0 (0%)	0 (0%)	14 (15%)
75+	1 (11%)	1 (11%)	2 (22%)	3 (33%)	2 (22%)	9 (10%)
Total	47 (51%)	31 (34%)	6 (7%)	6 (7%)	2 (2%)	92 (100%)

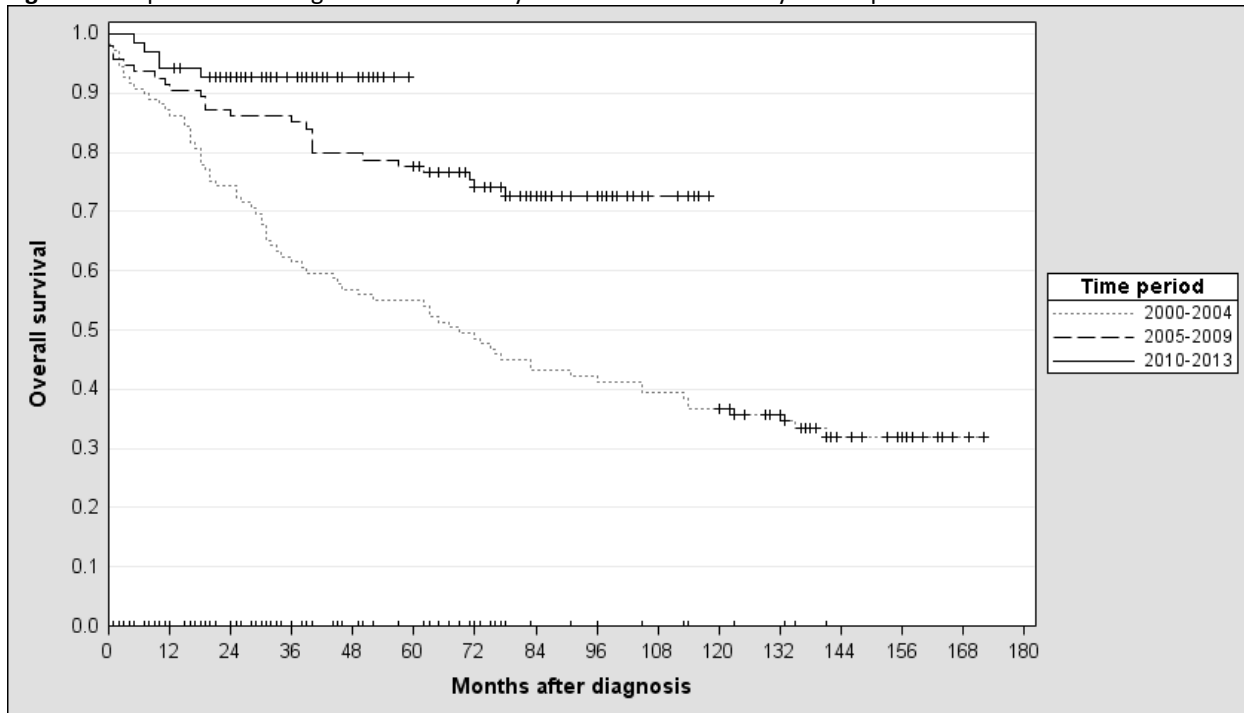
Figure S1. Kaplan–Meier diagram of Chronic Myeloid Leukemia: All age groups.



The overall survival comparison (log rank test):

- $p < 0.001$: 2000-2004 vs. 2005-2009
- $p < 0.001$: 2000-2004 vs. 2010-2013
- $p = 0.957$: 2005-2009 vs. 2010-2013

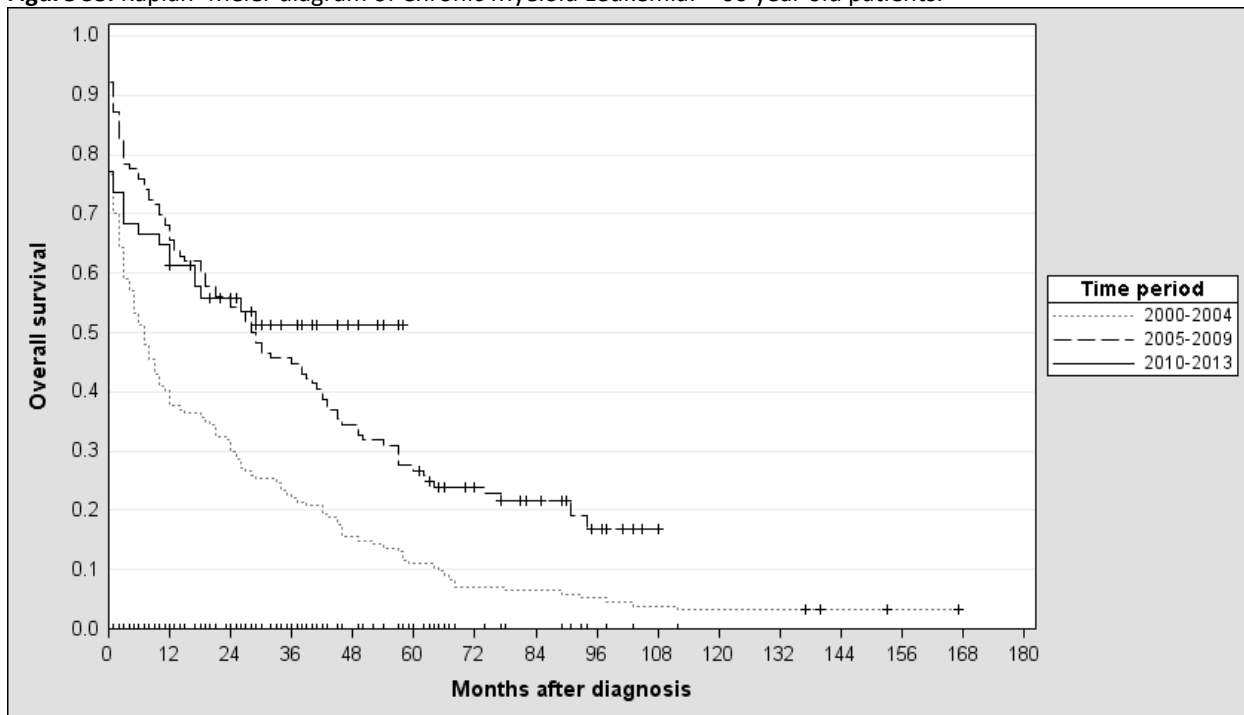
Figure S2. Kaplan–Meier diagram of Chronic Myeloid Leukemia: 18-60 year old patients.



The overall survival comparison (log rank test):

- $p < 0.001$: 2000-2004 vs. 2005-2009
- $p < 0.001$: 2000-2004 vs. 2010-2013
- $p = 0.755$: 2005-2009 vs. 2010-2013

Figure S3. Kaplan–Meier diagram of Chronic Myeloid Leukemia: >60 year old patients.



The overall survival comparison (log rank test):

- $p < 0.001$: 2000-2004 vs. 2005-2009
- $p < 0.001$: 2000-2004 vs. 2010-2013
- $p = 0.308$: 2005-2009 vs. 2010-2013

References

1. Dawson, B. and R.G. Trapp, *Basic & clinical biostatistics*. 2001, Monterey: McGraw-Hill.
2. Boniol, M. and M. Heanue, *Age-standardisation and denominators*, in *Cancer incidence in five continents*, M.P. Curado and e. al., Editors. 2008. p. 1-837.
3. *United Nations. World Population Prospects, the 2010 Revision*. 2010; Available from: <http://esa.un.org/wpp/Excel-Data/population.htm>.
4. Dickman, P.W., et al., *Regression models for relative survival*. *Stat Med*, 2004. **23**(1): p. 51-64.