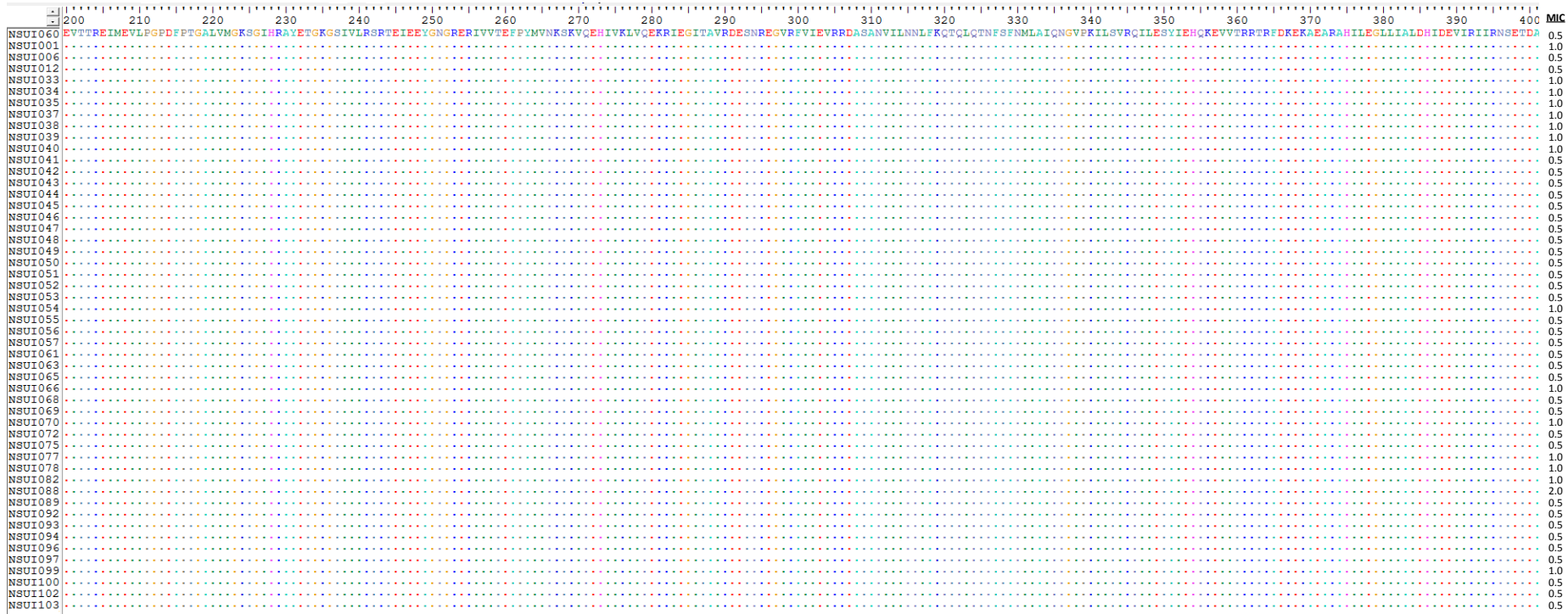




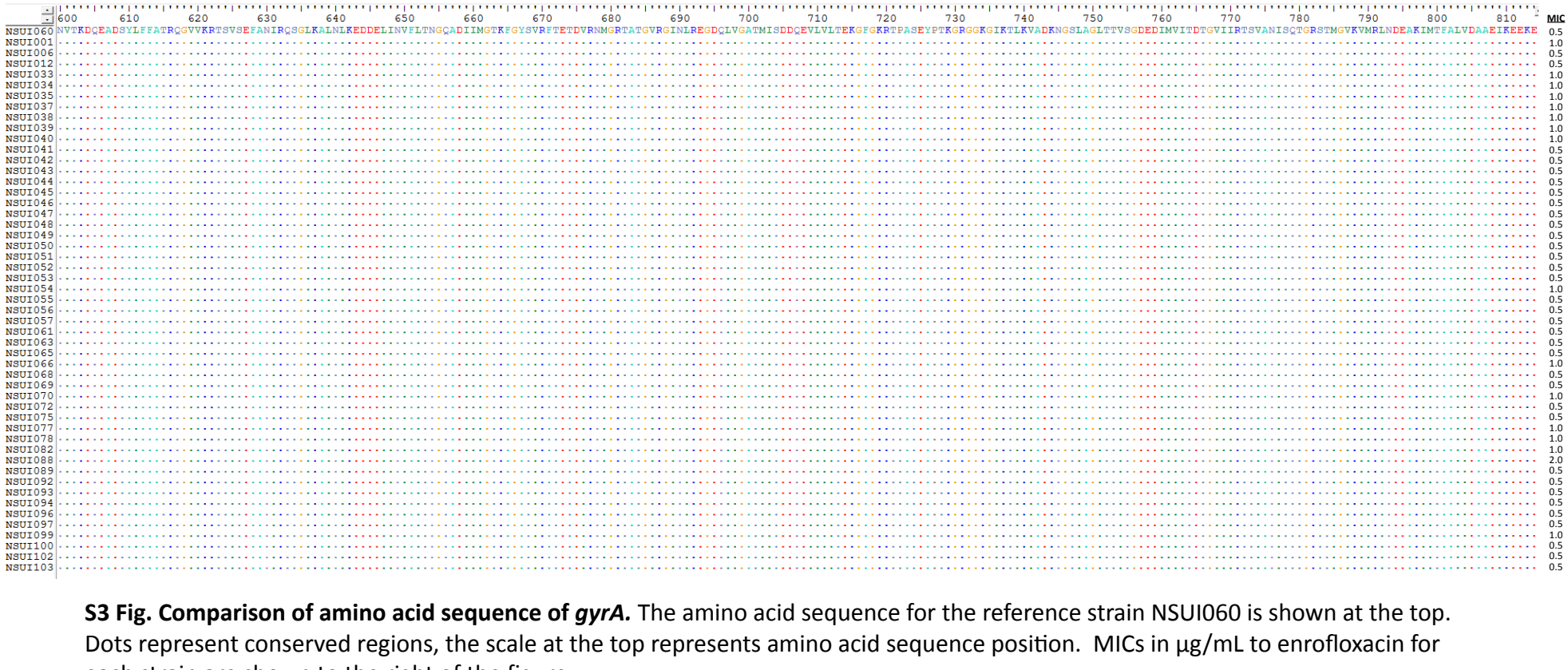
**S3 Fig. Comparison of amino acid sequence of *gyrA*.** The amino acid sequence for the reference strain NSUI060 is shown at the top. Dots represent conserved regions, the scale at the top represents amino acid sequence position. MICs in µg/mL to enrofloxacin for each strain are shown to the right of the figure.



**S3 Fig. Comparison of amino acid sequence of *gyrA*.** The amino acid sequence for the reference strain NSUI060 is shown at the top. Dots represent conserved regions, the scale at the top represents amino acid sequence position. MICs in  $\mu\text{g}/\text{mL}$  to enrofloxacin for each strain are shown to the right of the figure.



**S3 Fig. Comparison of amino acid sequence of *gyrA*.** The amino acid sequence for the reference strain NSUI060 is shown at the top. Dots represent conserved regions, the scale at the top represents amino acid sequence position. MICs in µg/mL to enrofloxacin for each strain are shown to the right of the figure.



**S3 Fig. Comparison of amino acid sequence of *gyrA*.** The amino acid sequence for the reference strain NSUI060 is shown at the top. Dots represent conserved regions, the scale at the top represents amino acid sequence position. MICs in  $\mu\text{g}/\text{mL}$  to enrofloxacin for each strain are shown to the right of the figure.