

Supplementary Materials: Mesenchymal Stem Cells Attenuate Working Memory in the 3xTg-AD Mouse Model of Alzheimer's Disease

Jiri Ruzicka, Magdalena Kulijewicz-Nawrott, Jose Julio Rodriguez-Arellano, Pavla Jendelova and Eva Sykova

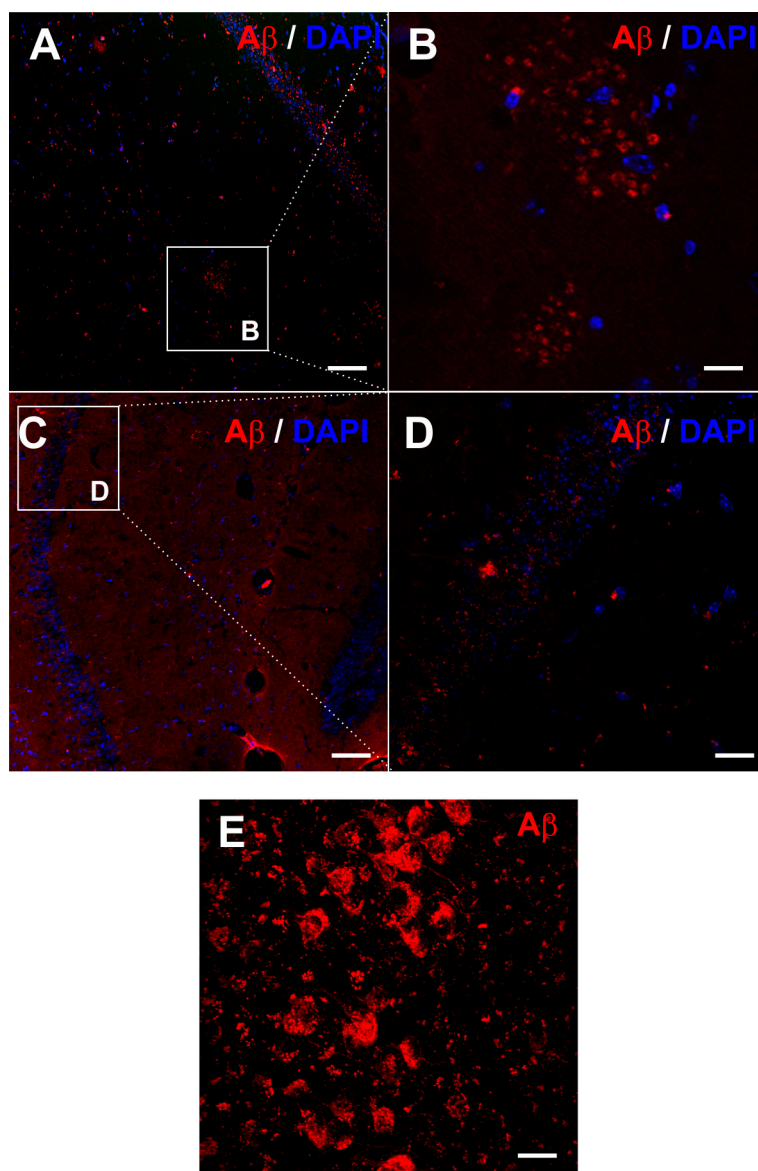


Figure S1. A β intracellular deposits and plaque formation (red) at 14 months of age in the hippocampus of saline- (A, detail B) and hMSC-treated AD mice (C, detail D). A β intracellular deposits and plaque formation (red) at 20 months of age in the hippocampus of a 3xTg AD mouse (E). Scale bars: 20 μ m (A,C) and 60 μ m (B,D,E). DAPI: 4',6-Diamidino-2'-phenylindole dihydrochloride, blue.