

Fig. S1. Representation of the patterns obtained after restriction with *AfuI*. I, VI, II, IV, IVB, V, VII, IX and X are the main patterns obtained from the restriction, termed as the same. MK is a molecular weight marker (100-bp).

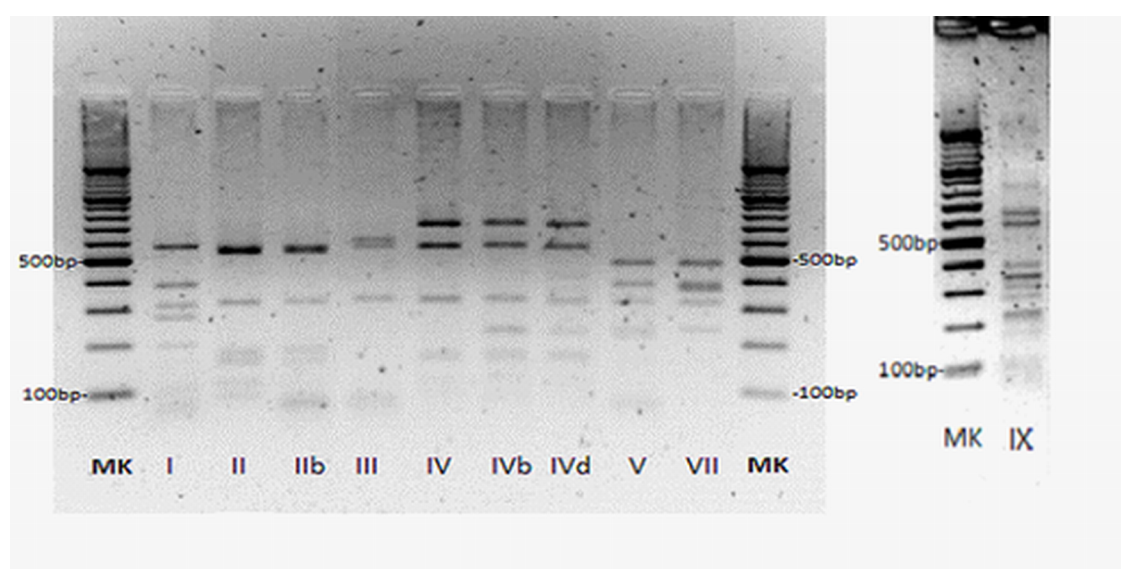


Fig. S2. Representation of the patterns obtained after restriction with *RsaI*. I, II, IIB, III, IV, IVB, IVD, V, VII and IX are the main patterns obtained from the restriction, termed as the same. MK is a molecular weight marker (100-bp).