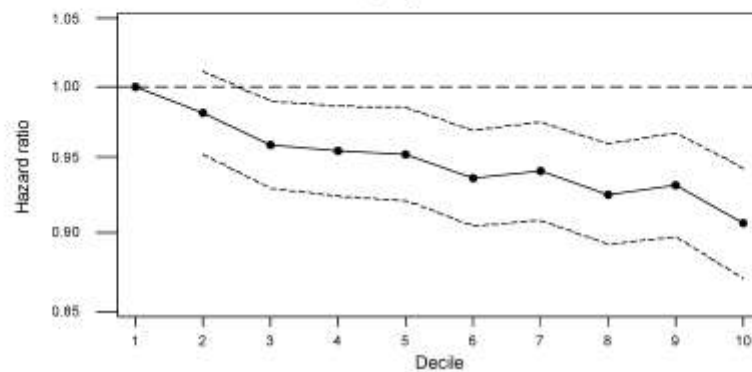
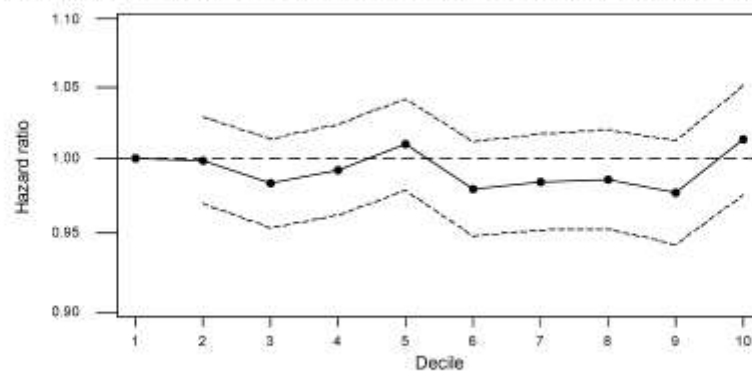


**Web figure:** HRs for death in relation to referral ratio, conversion rate and detection rate deciles, adjusted for age, sex and cancer type, and mutually adjusted

**A. Hazard ratio for death, by decile of referral ratio.**



**B. Hazard ratio for death, by decile of conversion rate.**



**C. Hazard ratio for death, by decile of detection rate.**

