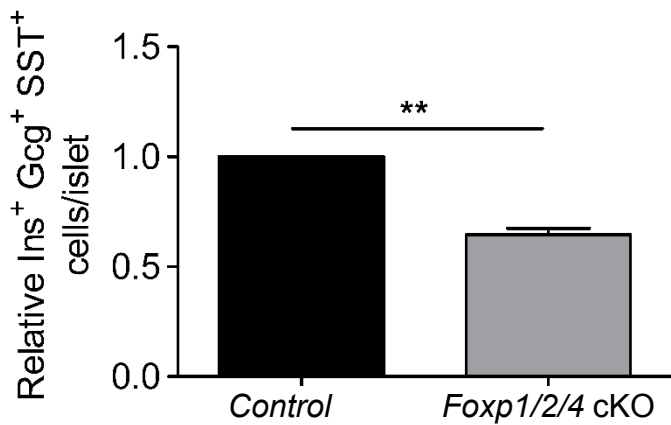
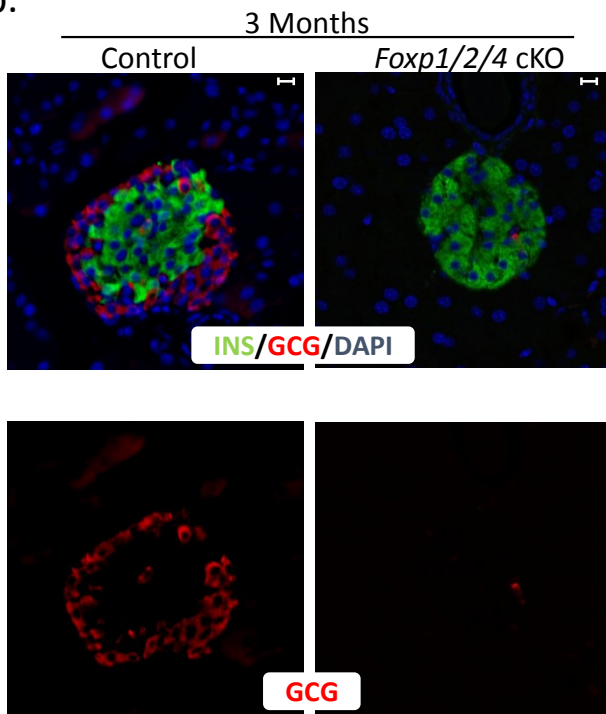


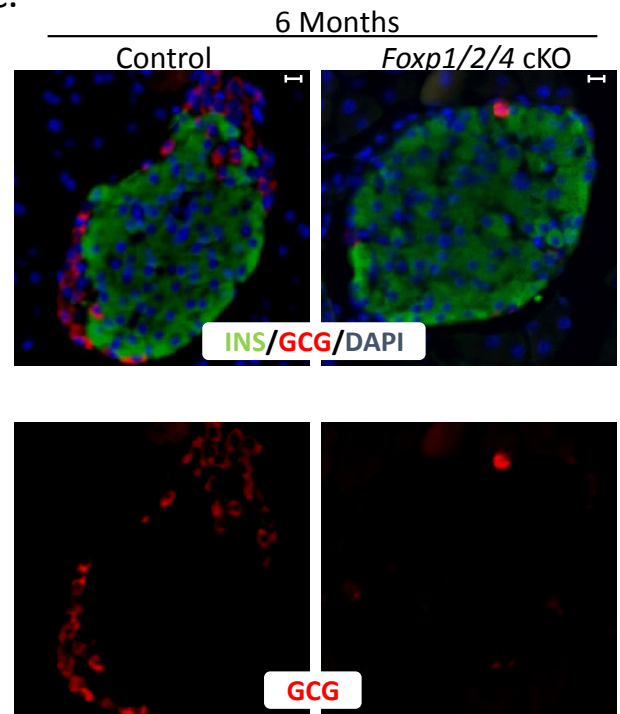
a.



b.



c.



**ESM Fig. 4. *Foxp1/2/4* cKO mice have smaller islets at 4W and reduced numbers of islet alpha cells at 3 and 6 Months.** a. Total number of Insulin<sup>+</sup>, Glucagon<sup>+</sup> and Somatostatin<sup>+</sup> cells per islet from 4W *Foxp1/2/4* cKO and control pancreata were counted, averaged and normalized to control (arbitrarily set at a value of 1). b-c. Pancreata from 3 month (b.) and 6 month (c.) old control and *Foxp1/2/4* cKO mice were monitored by immunofluorescence for Insulin (INS) and Glucagon (GCG). \*\*,  $p < 0.01$  after two-tailed student's t-test. Scale bars = 20 $\mu\text{m}$ .