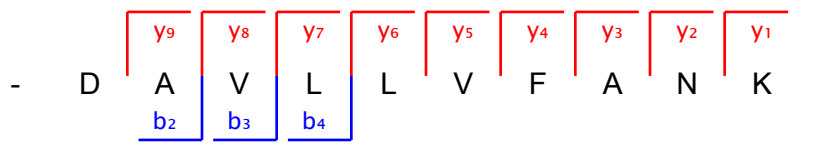
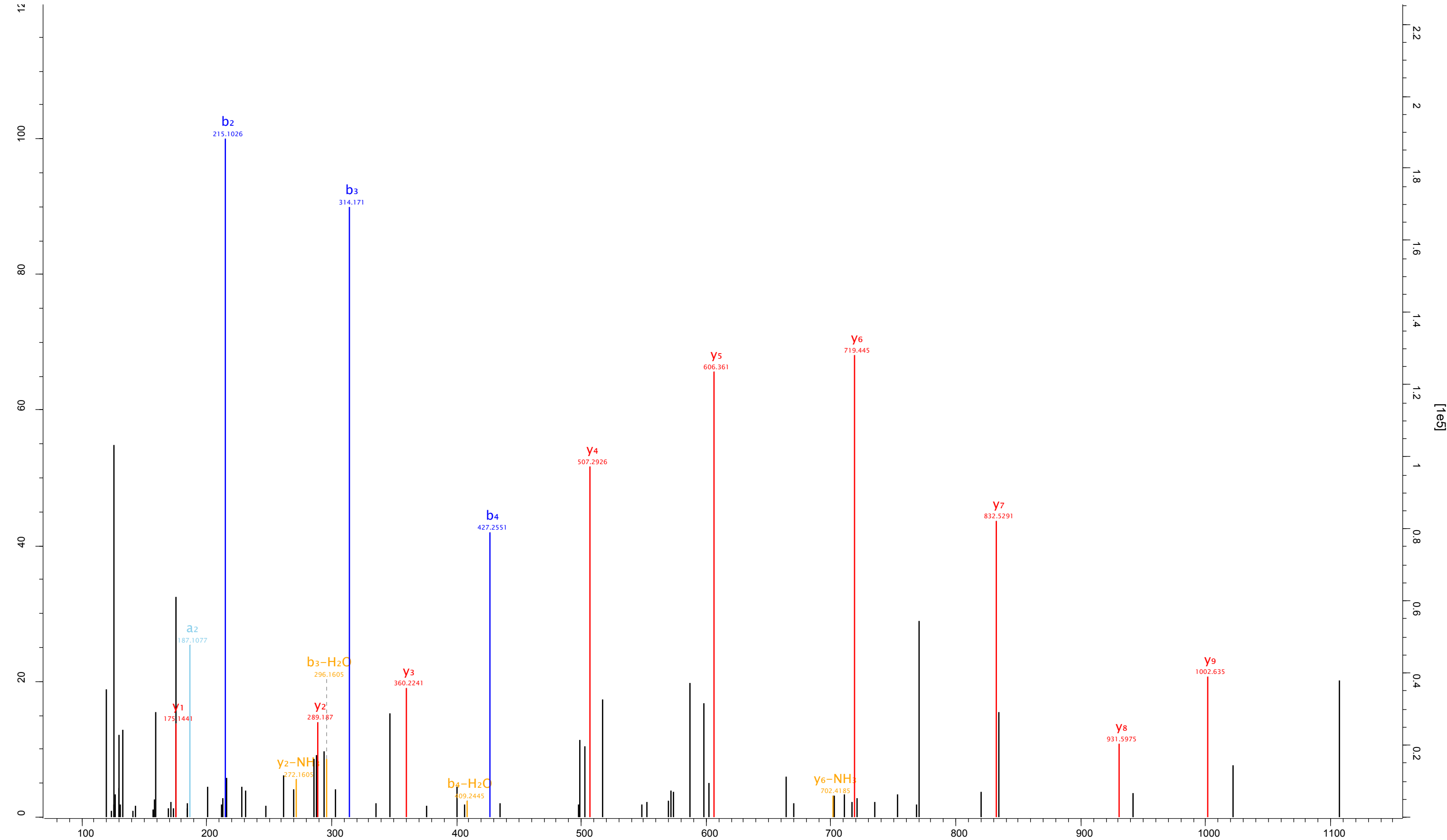
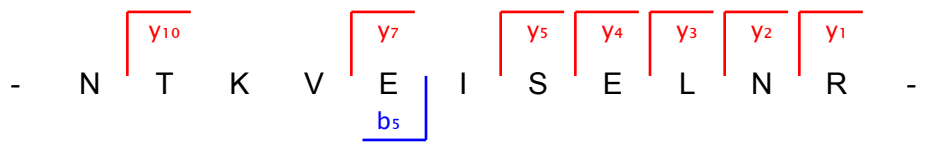


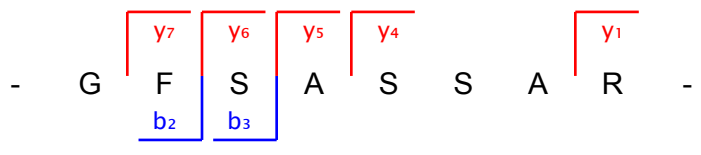
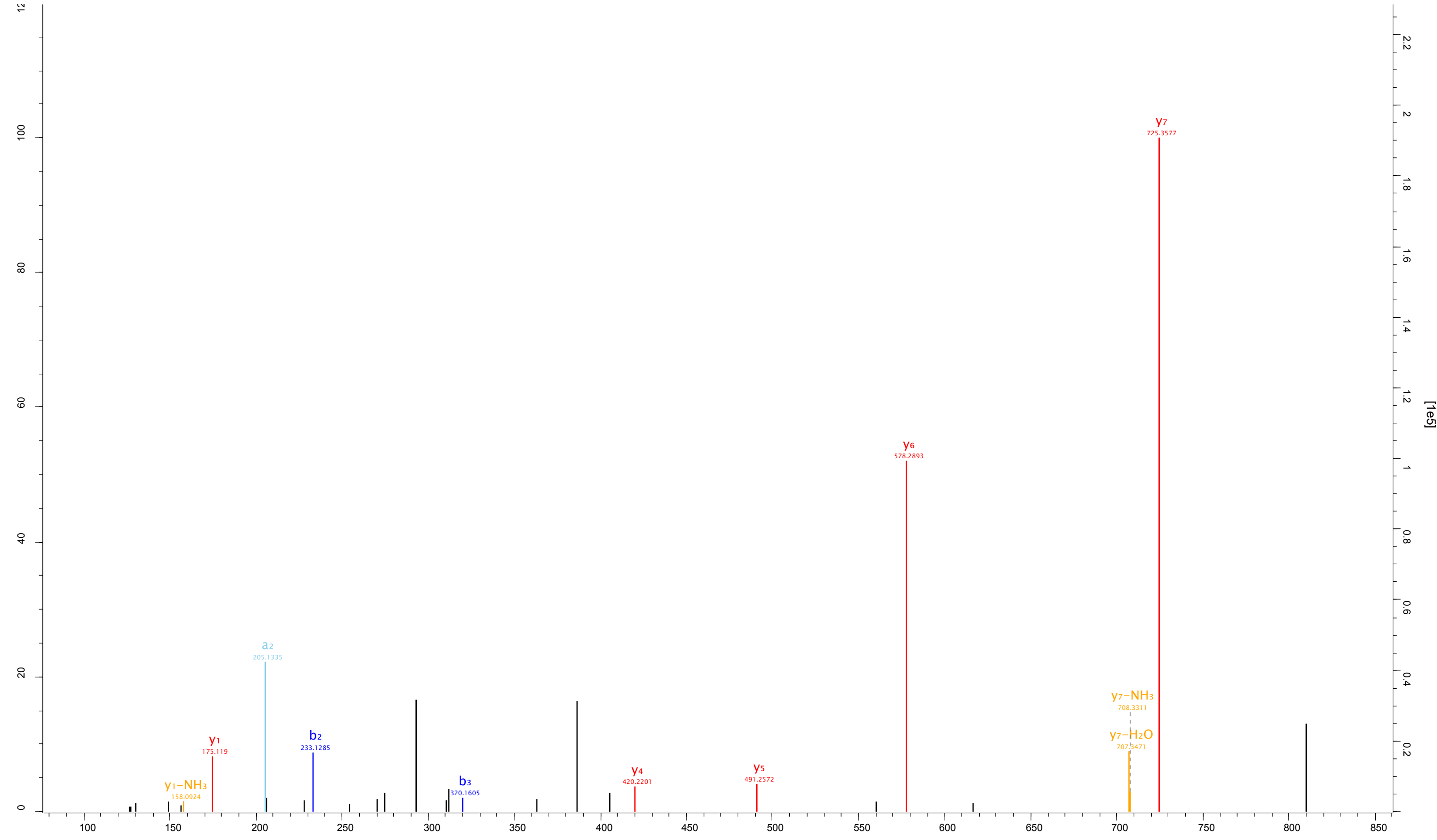
Raw file ECS_3B Scan 24134 Method FTMS; HCD Score 98.04 m/z 573.35 Gene names ARF5;ARF1;ARF3



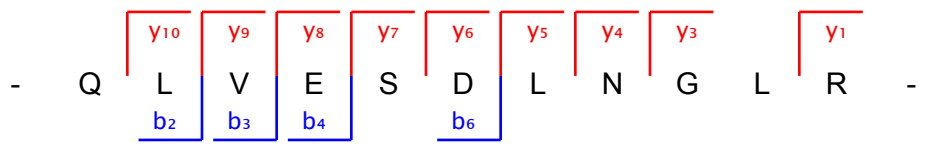
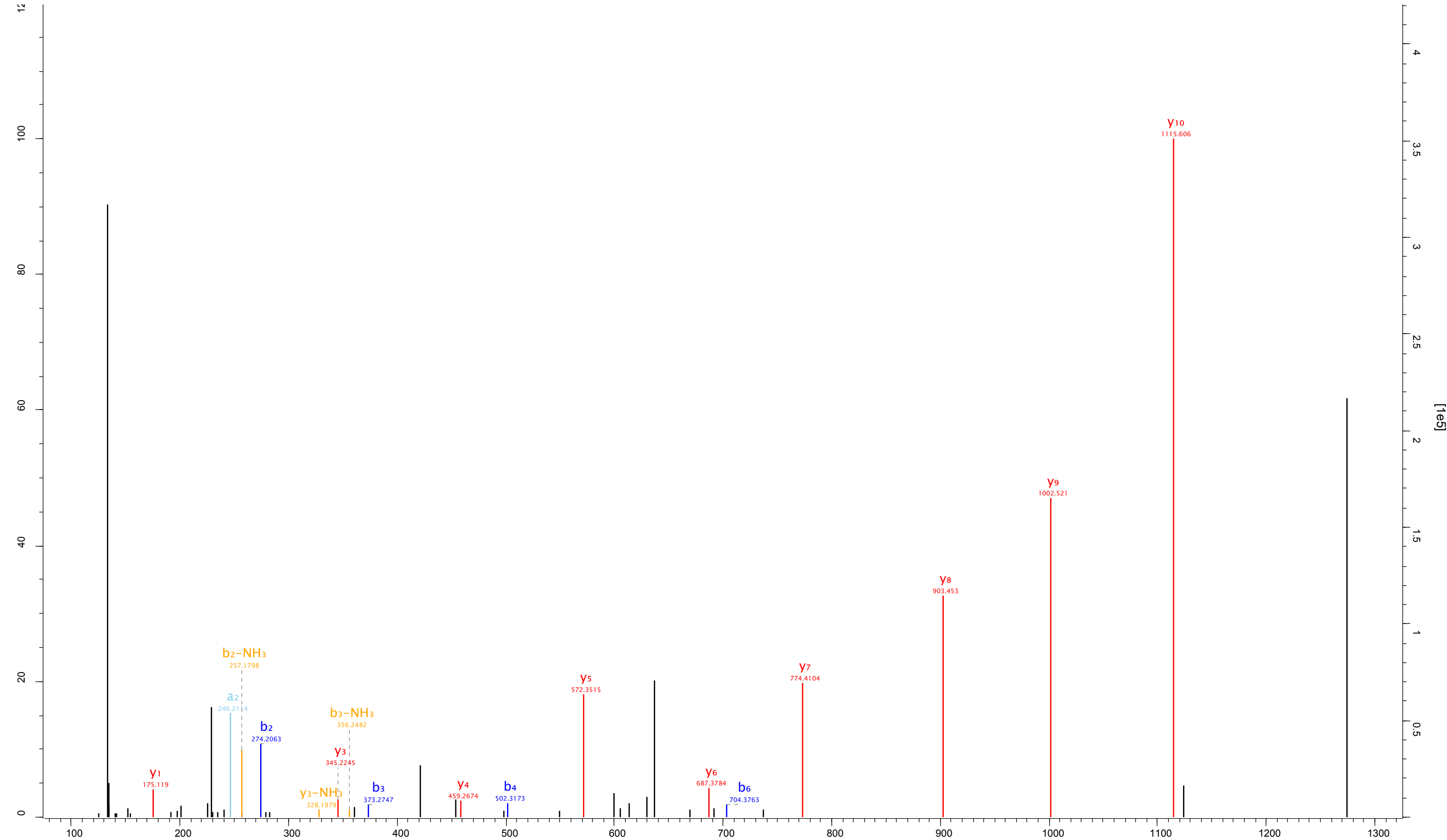
Raw file ECS_D6 Scan 8866 Method FTMS; HCD Score 43.68 m/z 456.28 CON_ENSEMBL:ENSBTAP00000038253



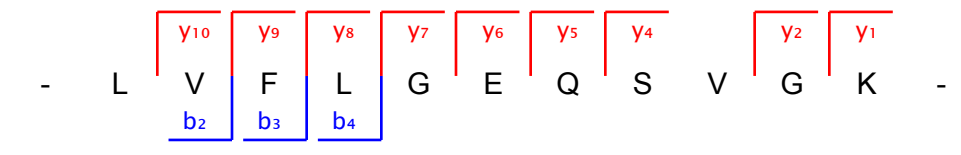
Raw file
ECS_D5 Scan 4284 Method FTMS; HCD Score 65.25 m/z 405.71 CON_P04259



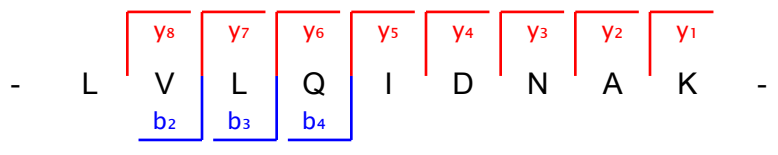
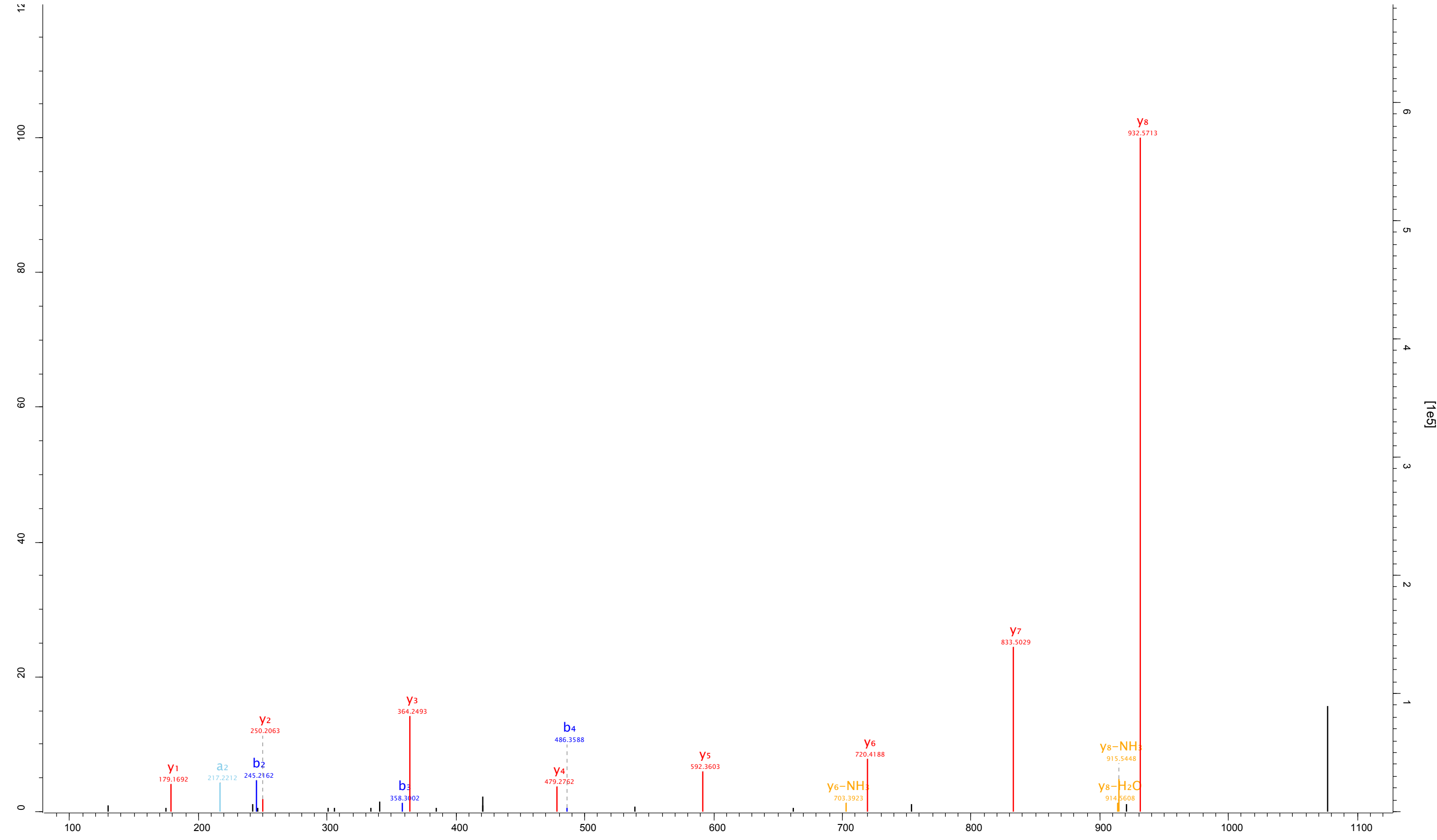
Raw file Scan Method Score m/z
ECS_C2 13378 FTMS; HCD 78.9 638.36 CON_REFSEQ:XP_986630



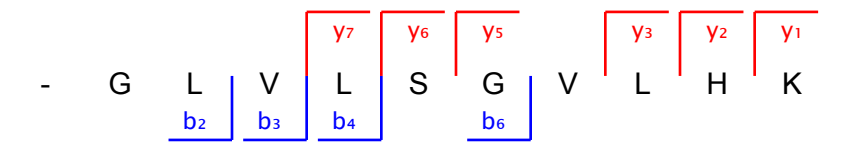
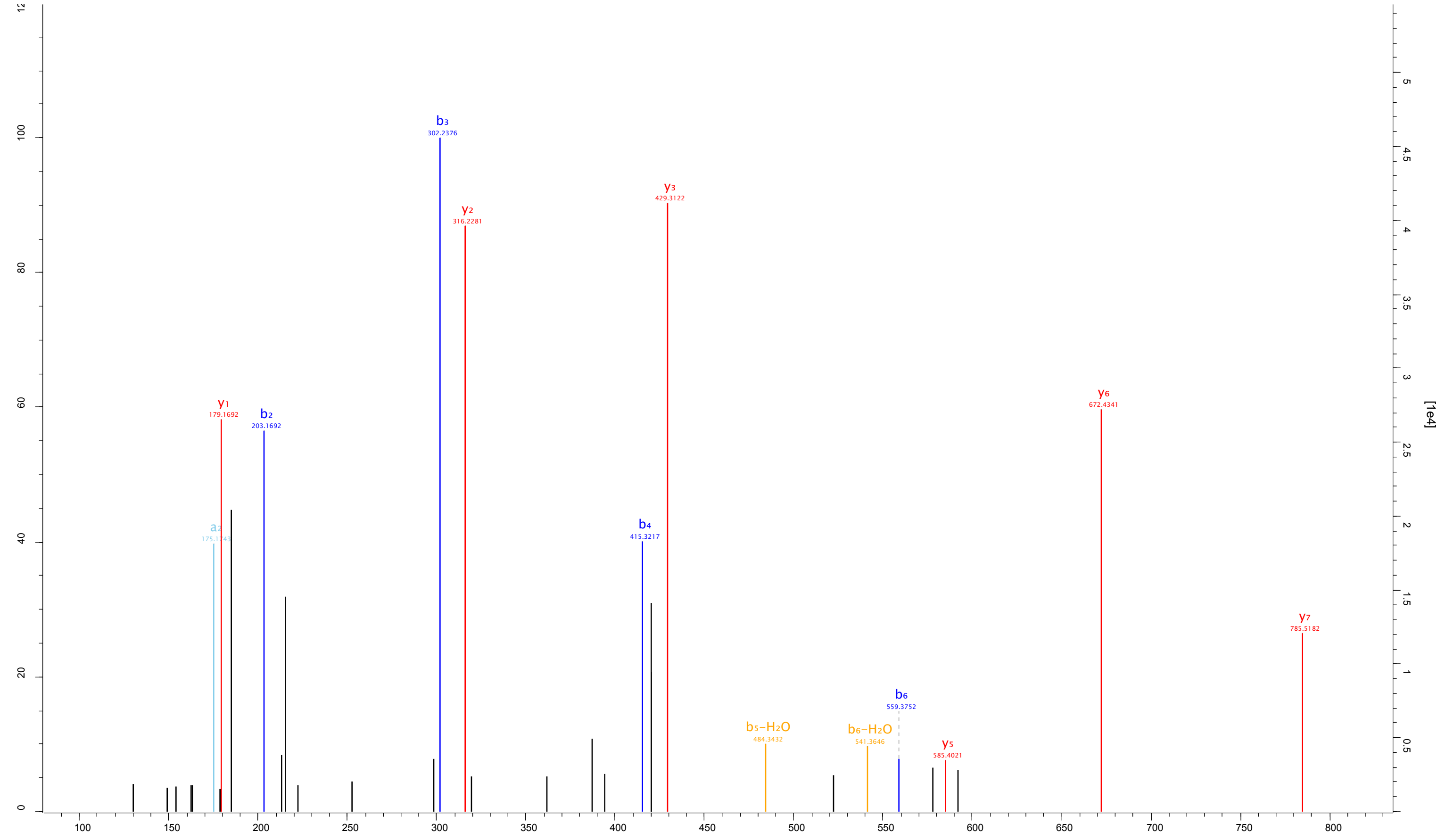
Raw file ECS_A12 Scan 17329 Method FTMS; HCD Score 94.47 m/z 616.87 Gene names RAB6A;RAB6B



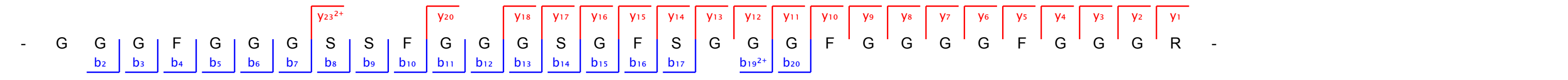
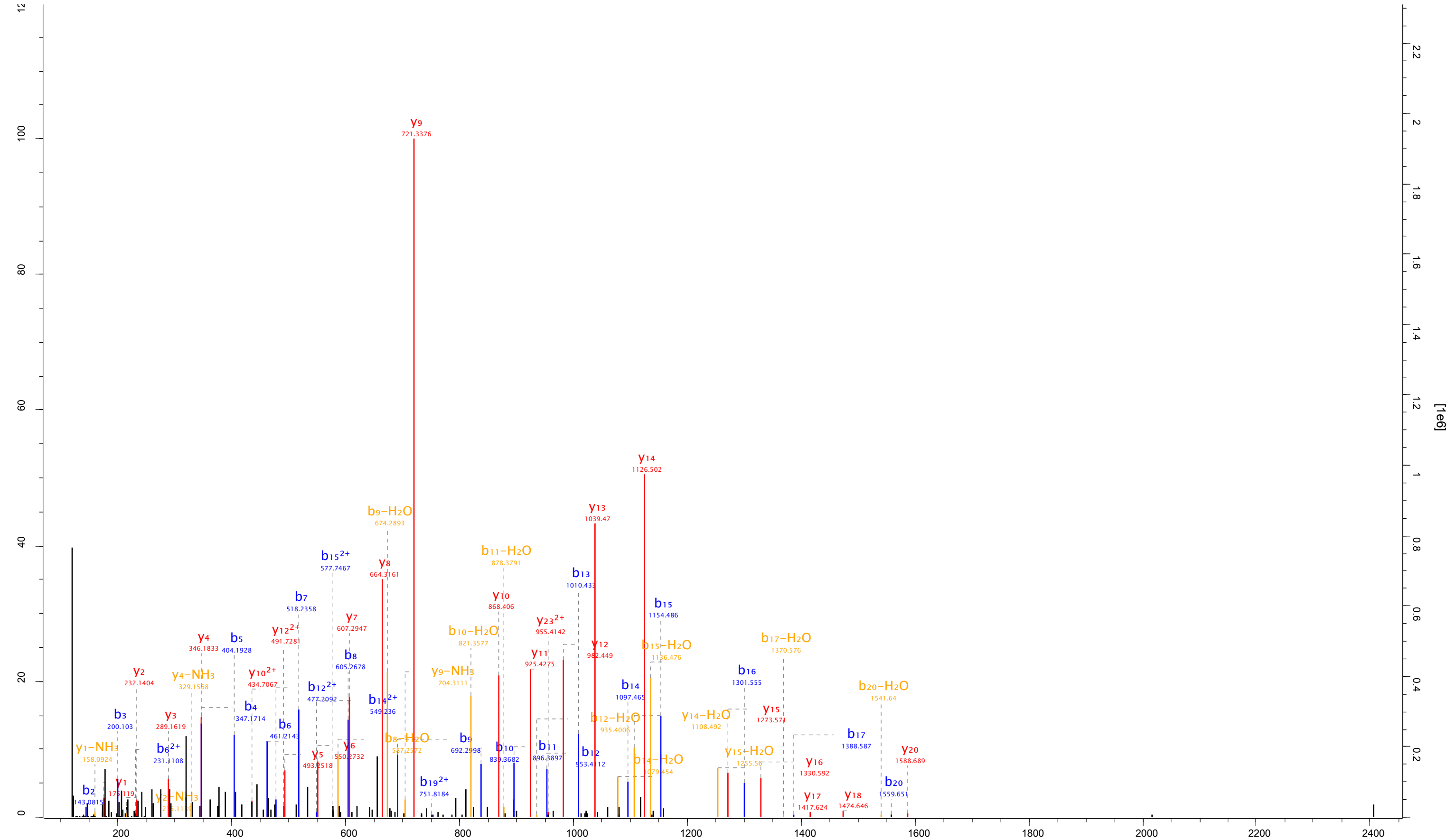
Raw file
ECS_C2 Scan 13669 Method FTMS; HCD Score 115.71 m/z 539.36 Gene names KRT36



Raw file ECS_A6 Scan 13295 Method FTMS; HCD Score 82.29 m/z 362.92 Gene names SERPINB3



Raw file: ECS_4B
 Scan: 20360
 Method: FTMS; HCD
 Score: 214.16
 m/z: 810.02
 Gene names: KRT2



Raw file ECS_C1_150508121925 Scan 5952 Method FTMS; HCD Score 53.45 m/z 455.25 Gene names YWHAZ



- Y L A E V A A G D D K K -

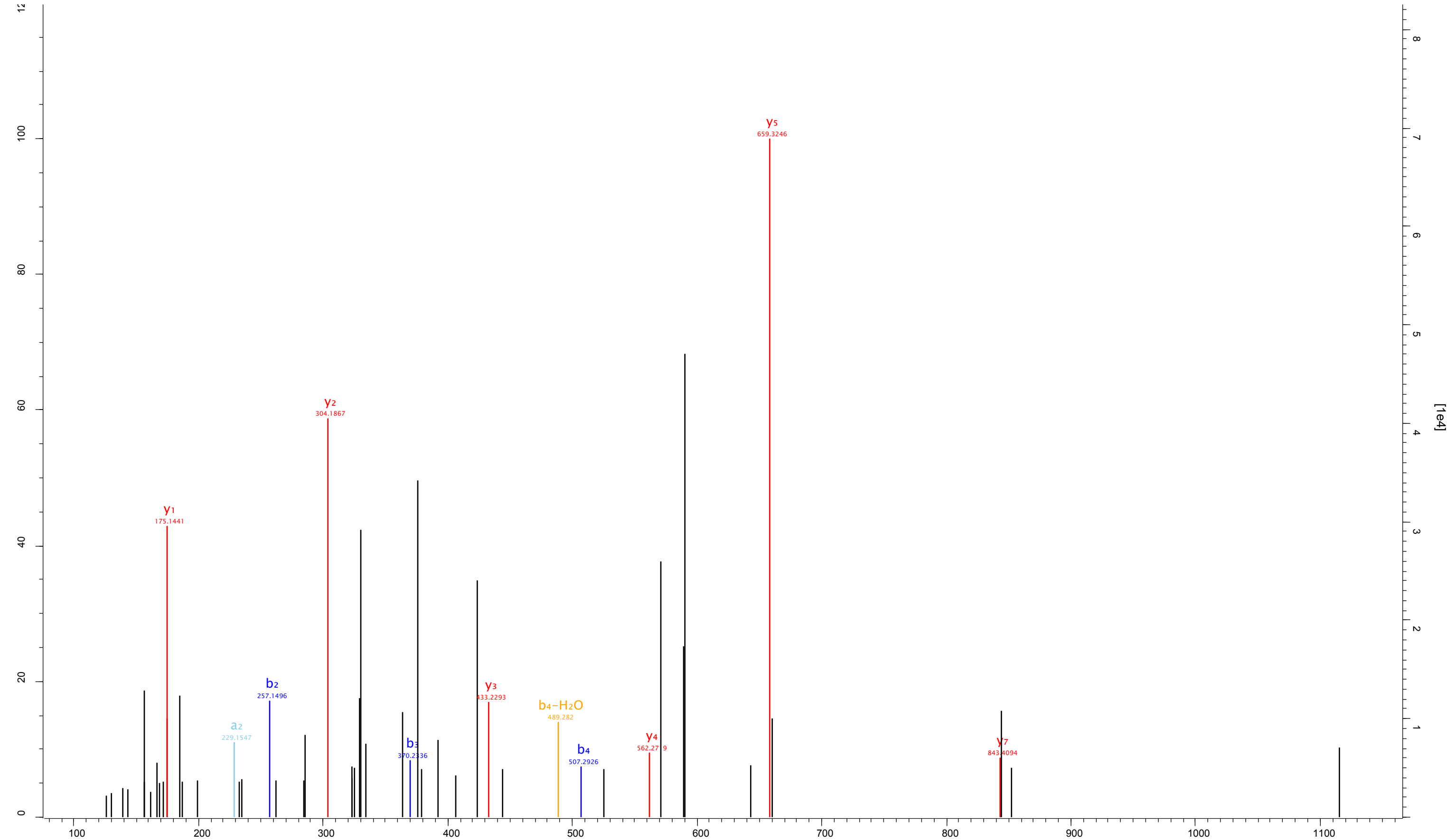
Fragmentation mapping (red boxes):

- y11: L
- y10: A
- y9²⁺: E
- y8: V
- y7: A
- y6: A
- y5: G
- y3: D
- y2: D
- y1: K

Fragmentation mapping (blue box):

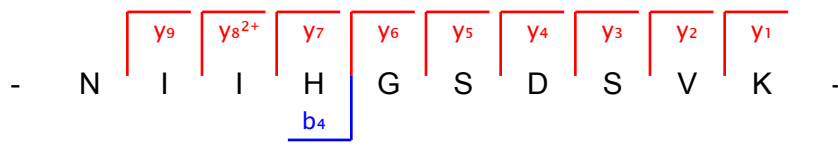
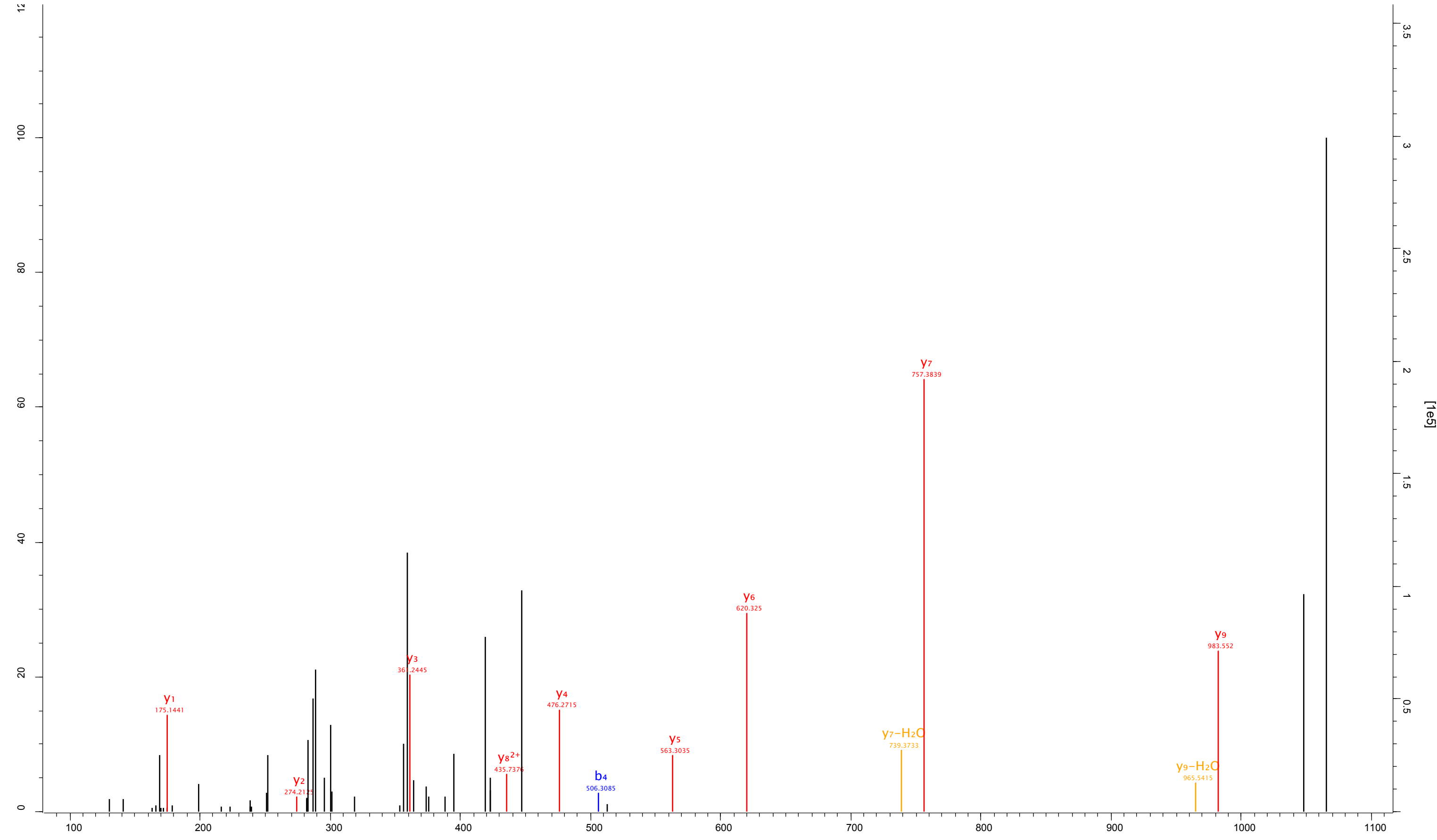
- b4: E

Raw file ECS_1B Scan 10309 Method FTMS; HCD Score 37.61 m/z 450.57 Gene names RPS27

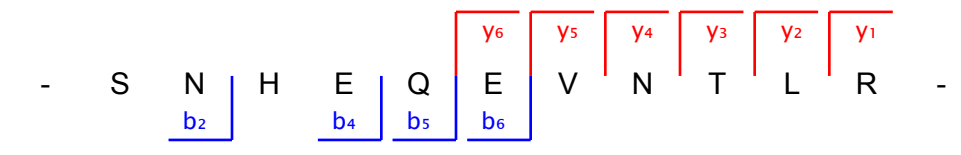
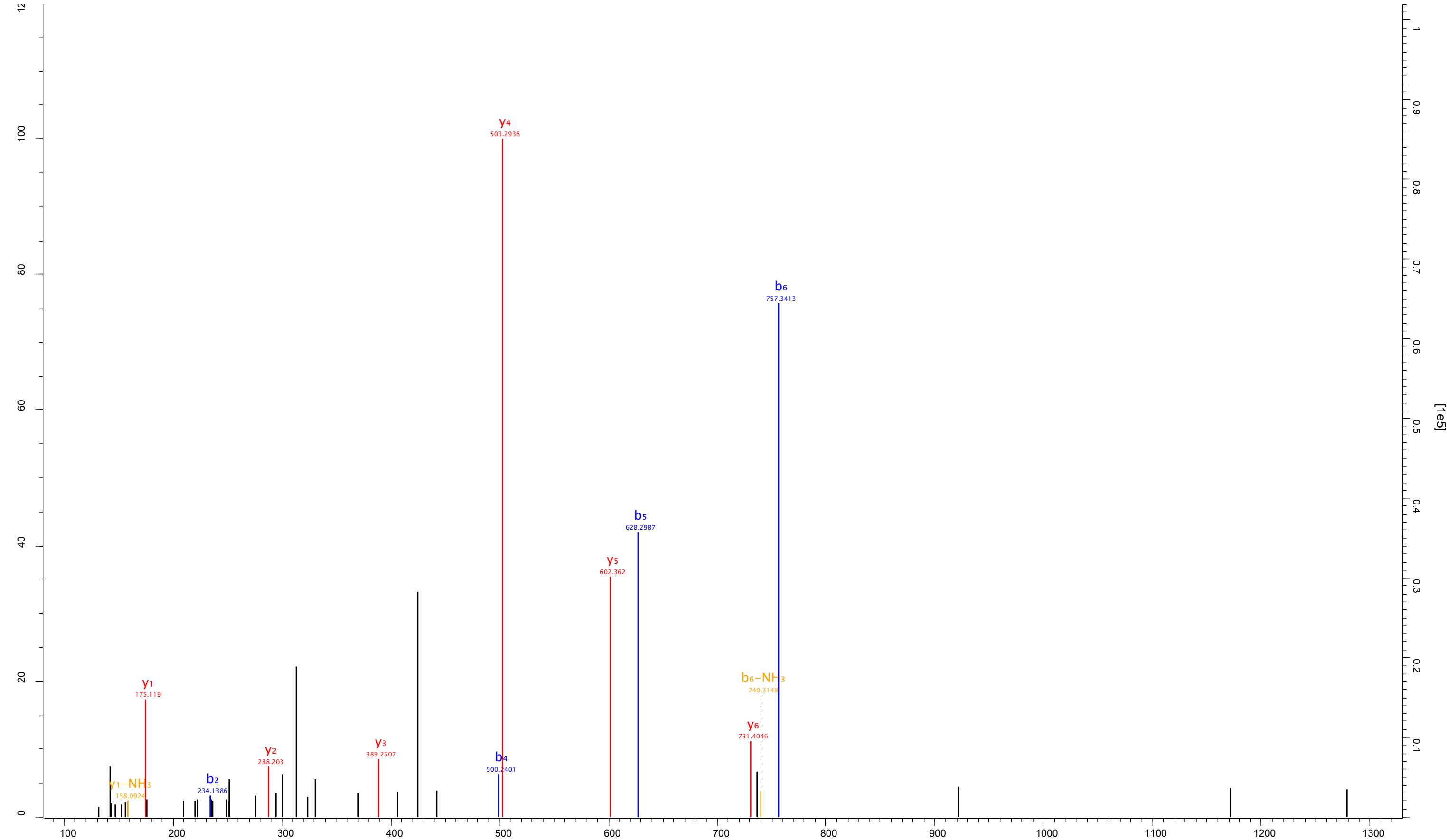


- D L L H P S P E E E K -
 b2 b3 b4 y7 y5 y4 y3 y2 y1

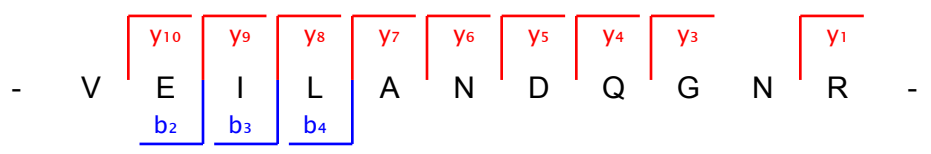
Raw file ECS_A1_150507150614 Scan 3976 Method FTMS; HCD Score 45.83 m/z 375.88 Gene names NME1-NME2;NME2;NME2P1



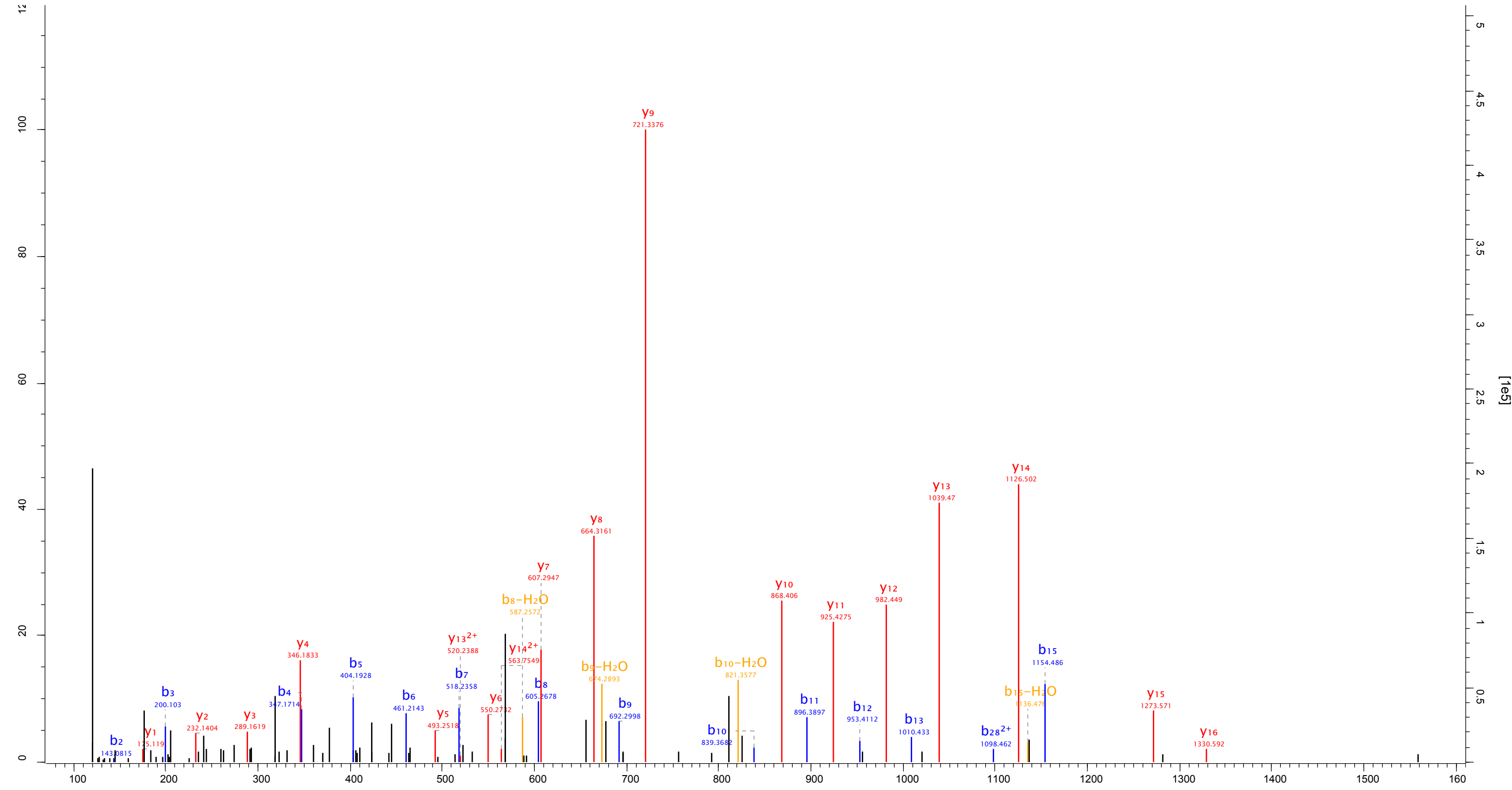
Raw file ECS_A3_150507195619 Scan 3387 Method FTMS; HCD Score 47.71 m/z 453.57 Gene names KRT31



Raw file: ECS_A1_18_05
 Scan: 9551
 Method: FTMS; HCD
 Score: 81.62
 m/z: 628.83
 Gene names: HSPA7;HSPA6



Raw file: ECS_A2_18_05
 Scan: 20419
 Method: FTMS; HCD
 Score: 117.53
 m/z: 810.36
 Gene names: KRT2



- G G G F G G G S S F G G G S G F S G G G F G G G F G G G R -

Fragmentation mapping (b and y ions):

- b2: G
- b3: G
- b4: F
- b5: G
- b6: G
- b7: G
- b8: S
- b9: S
- b10: F
- b11: G
- b12: G
- b13: G
- b15: G
- b28²⁺: G
- y1: R
- y2: G
- y3: G
- y4: G
- y5: F
- y6: G
- y7: G
- y8: G
- y9: G
- y10: F
- y11: G
- y12: G
- y13: G
- y14: S
- y15: F
- y16: G

Raw file: ECS_A2_18_05
 Scan: 12584
 Method: FTMS; HCD
 Score: 75.91
 m/z: 752.42
 Gene names: KRT6C;KRT6A

