

**Note to Readers:** *EHP* strives to ensure that all journal content is accessible to all readers. However, some figures and Supplemental Material published in *EHP* articles may not conform to 508 standards due to the complexity of the information being presented. If you need assistance accessing journal content, please contact [ehp508@niehs.nih.gov](mailto:ehp508@niehs.nih.gov). Our staff will work with you to assess and meet your accessibility needs within 3 working days.

## **Supplemental Material**

### **Effects of *in Utero* Exposure to Arsenic during the Second Half of Gestation on Reproductive End Points and Metabolic Parameters in Female CD-1 Mice**

Karina F. Rodriguez, Erica K. Ungewitter, Yasmin Crespo-Mejias, Chang Liu, Barbara Nicol, Grace E. Kissling, and Humphrey Hung-Chang Yao

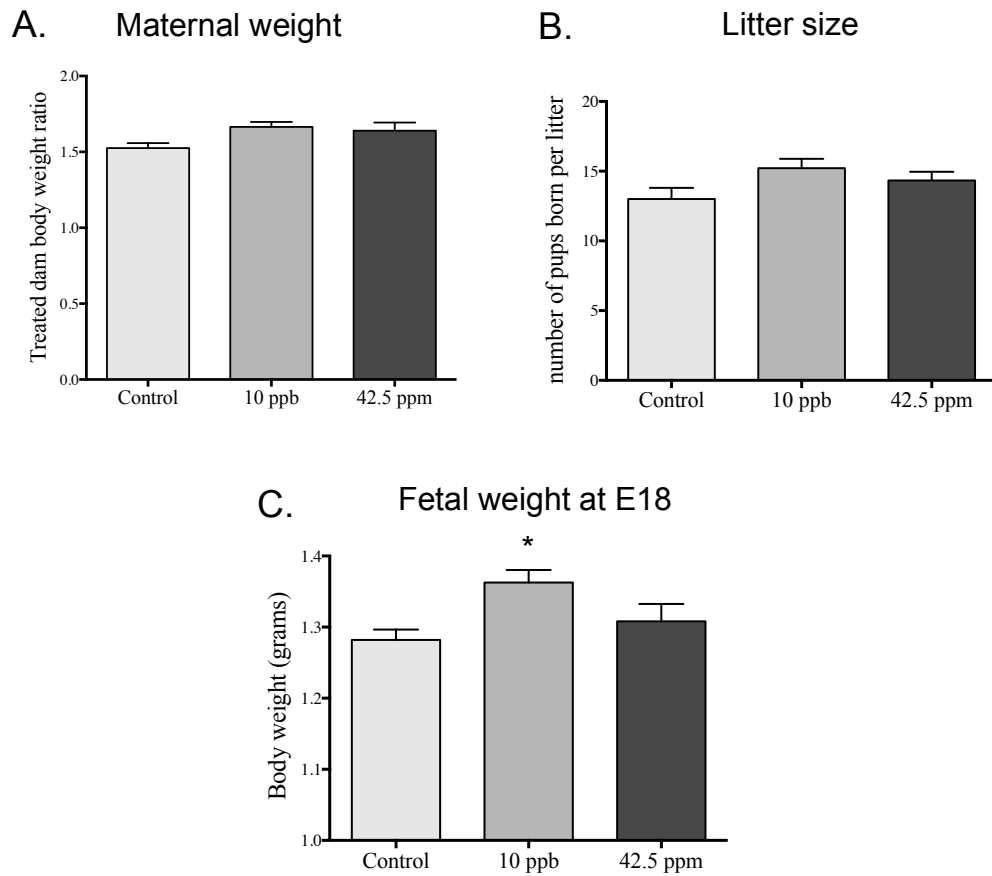
#### **Table of Contents**

**Figure S1:** Effects of *in utero* arsenic exposure on (A) maternal weight gains during gestation (represented as ratio between weight at birth and weight at the beginning of treatment; control n=7; 10 ppb n=7; 42.5 ppm n=7); (B) numbers of pups per litter (Control n=7; 10 ppb n=7; 42.5 ppm n=7) and (C) body weights of fetuses at E18 (Control n=46; 10 ppb n=30; 42.5 ppm n=38). All bars indicate mean  $\pm$  SE and \* indicates  $P < 0.05$  compared to control.

**Figure S2:** Effects of *in utero* arsenic exposure on the ovarian morphology (H&E stained; bar represents 100  $\mu$ m) at 21 days, 28 days and 6 months of age.

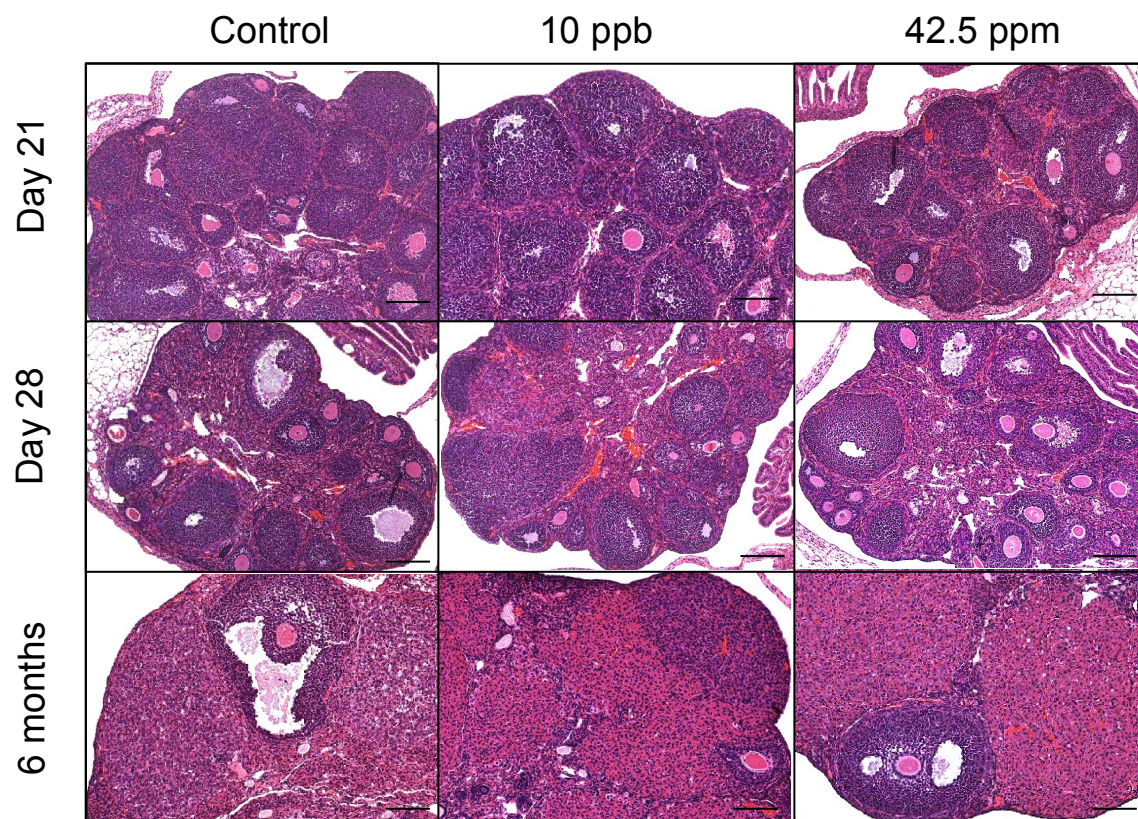
**Figure S3:** Effects of *in utero* arsenic exposure on serum levels (Means  $\pm$  SE) of (A) estradiol, (B) testosterone, (C) progesterone, and (D) DHEA at 6 months and 1 year of age.

Supplemental Figure S1



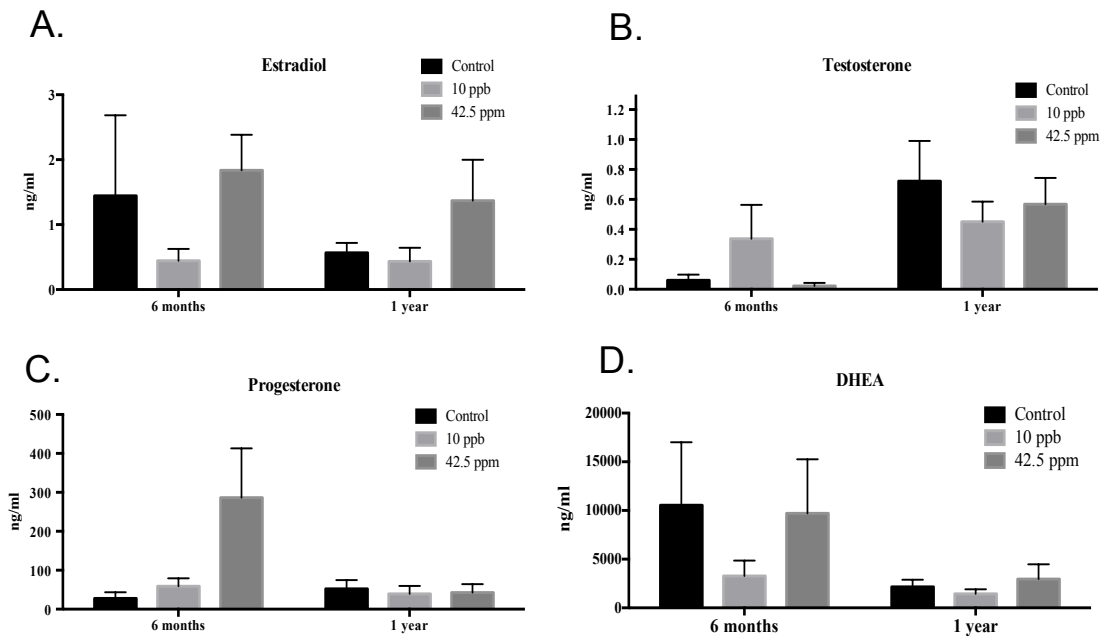
**Figure S1:** Effects of *in utero* arsenic exposure on (A) maternal weight gains during gestation (represented as ratio between weight at birth and weight at the beginning of treatment; control n=7; 10 ppb n=7; 42.5 ppm n=7); (B) numbers of pups per litter (Control n=7; 10 ppb n=7; 42.5 ppm n=7) and (C) body weights of fetuses at E18 (Control n=46; 10 ppb n=30; 42.5 ppm n=38). All bars indicate mean  $\pm$  SE and \* indicates  $P < 0.05$  compared to control.

Supplemental Figure S2



**Figure S2:** Effects of *in utero* arsenic exposure on the ovarian morphology (H&E stained; bar represents 100  $\mu$ m) at 21 days, 28 days and 6 months of age.

Supplemental Figure S3



**Figure S3:** Effects of *in utero* arsenic exposure on serum levels (Means  $\pm$  SE) of (A) estradiol, (B) testosterone, (C) progesterone, and (D) DHEA at 6 months and 1 year of age.