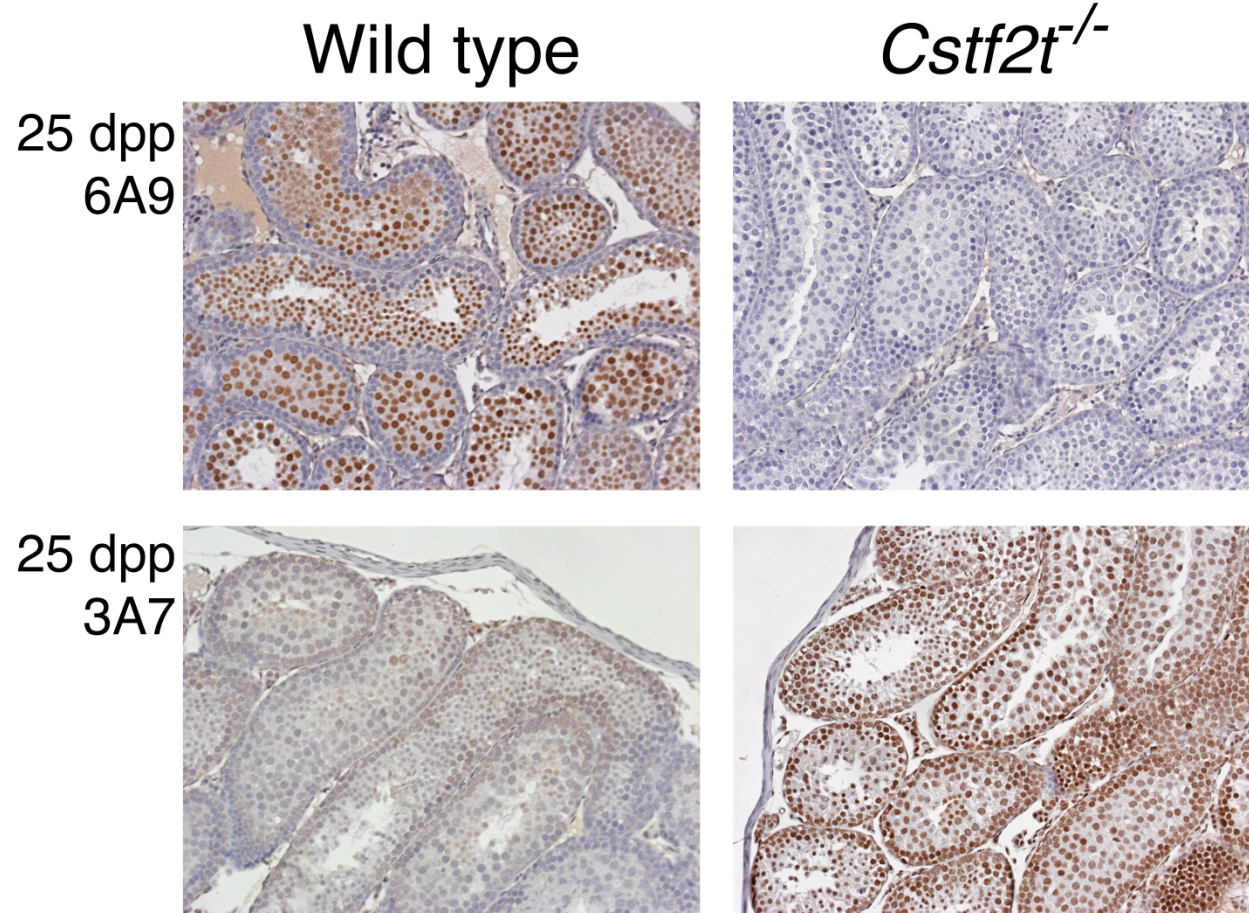
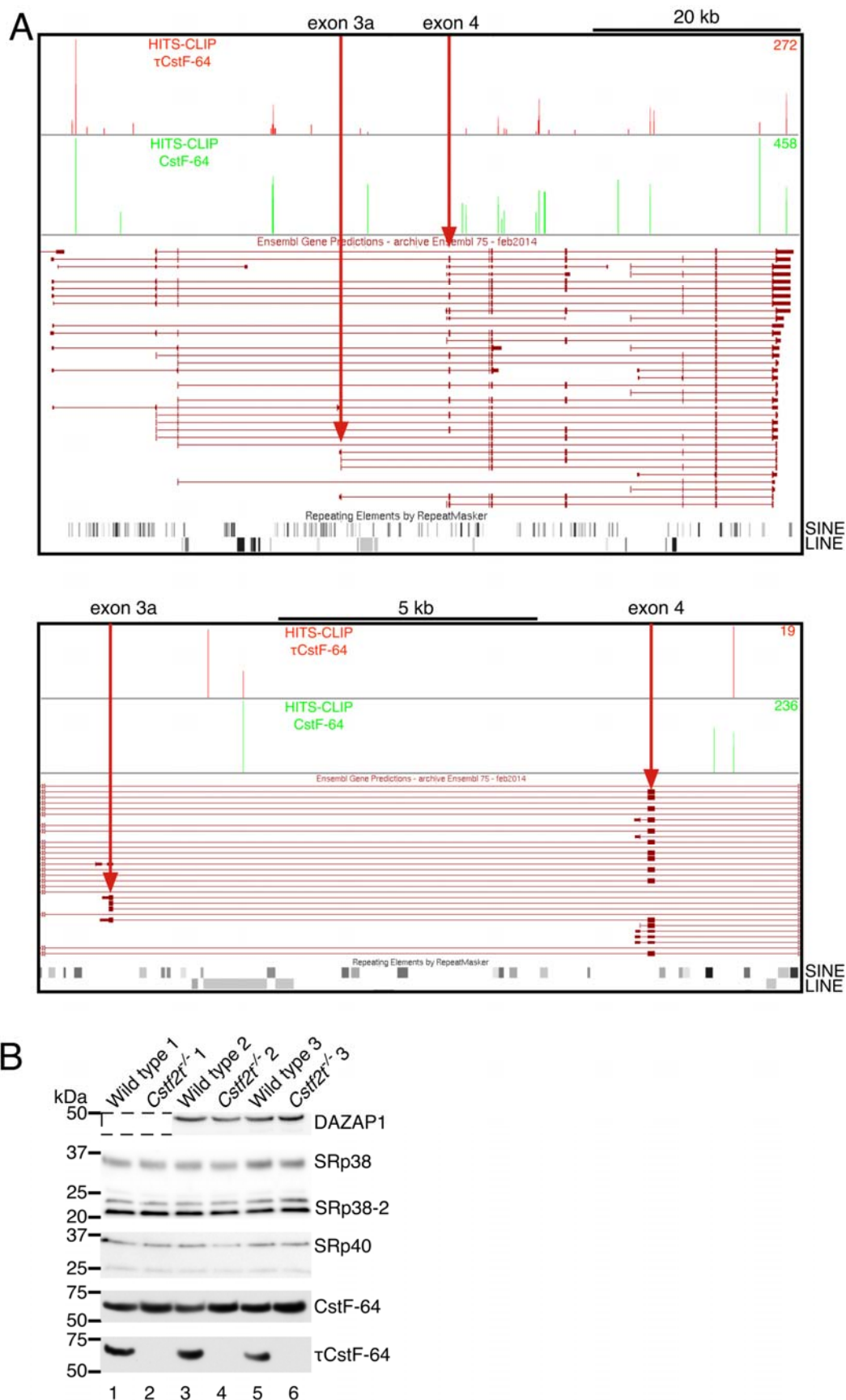


Grozdanov et al., Supplemental Figures



**Supplemental Figure S1.** Immunohistochemical distribution of  $\tau$ CstF-64 (6A9) and CstF-64 (3A7) in testis of 25 dpp wild type or *Cstf2t*<sup>-/-</sup> mice. For details of antibodies and staining, see reference 25. Magnification x40.



**Supplemental Figure S2.** (A) UCSC Genome browser representation of *Crem* containing custom tracks for HITS-CLIP for binding of  $\tau$ CstF-64 (in red) and CstF-64 (in green) to *Crem* mRNA, Ensembl

gene prediction of *Crem* gene, short interspersed nuclear elements (SINE), long interspersed nuclear elements (LINE) in the same region. Numbers in red ( $\tau$ CstF-64) and green (CstF-64) on right represent the highest number of HITS-CLIP reads assigned to a specific binding site in the corresponding tracks of the genome browser. Red arrows designate exons 3a and 4. Below - zoomed in image of *Crem* gene showing exons 3a, 3b and 4. HITS-CLIP-reads for  $\tau$ CstF-64 (in red) and CstF-64 (in green) to *Crem* mRNA and SINE and LINE in the region. **(B)** Expression of DAZAP1, SRp40, SRp38,  $\tau$ CstF-64 and CstF-64 in wild type and *Cstf2t<sup>-/-</sup>* testes. Western blot analysis of DAZAP1, SRp40, SRp38,  $\tau$ CstF-64 and CstF-64 expression in three wild type (lanes: 1, 3, 5) and three *Cstf2t<sup>-/-</sup>* (lanes: 2, 4, 6) male animals at 25 days postpartum. Molecular weight standards (in kDa) are shown on left. There were not enough protein samples corresponding to lane 1 and 2 to probe with an antibody against DAZAP1. This region is designated with a dotted line.