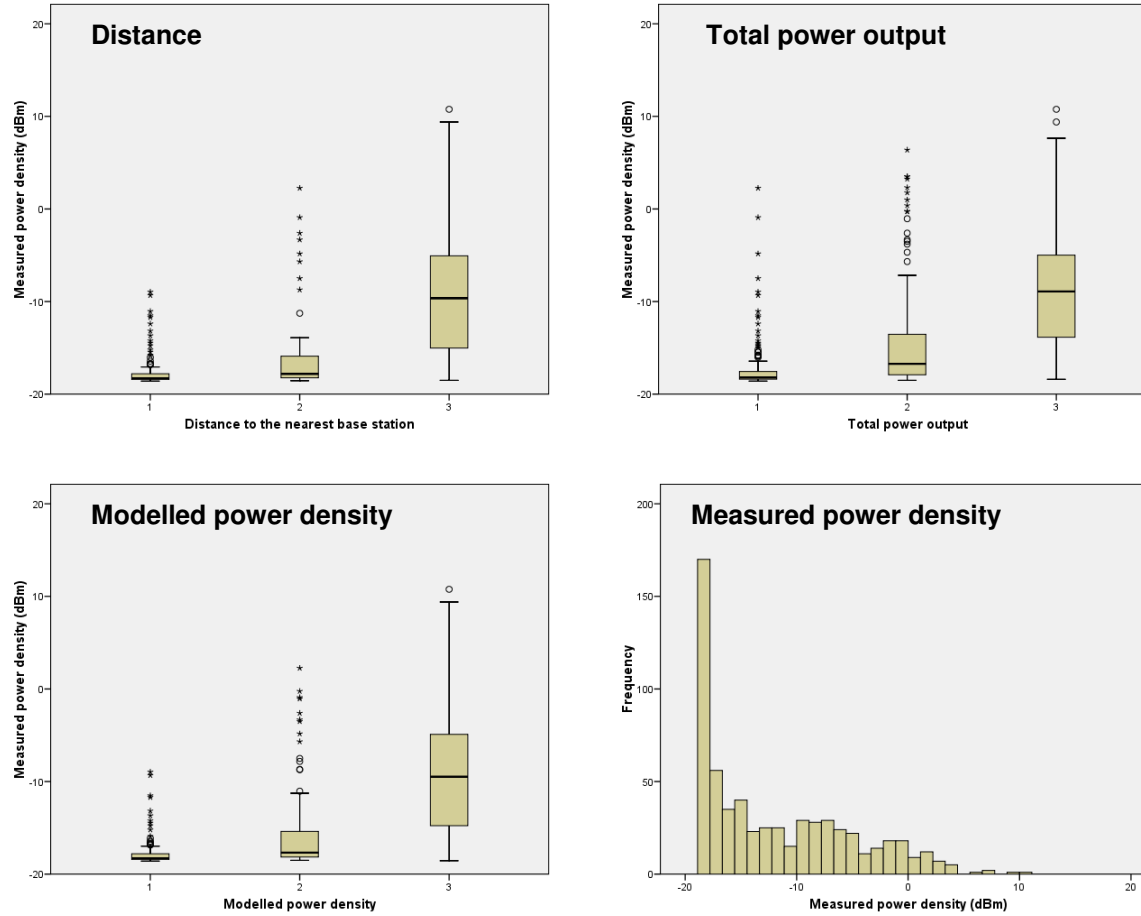


Figure B. Boxplots of measured power density at 620 test sites for the three exposure metrics, and histogram of measured power density at the test sites [posted as supplied by author]



Categories: Distance (m): **1** = ≥ 1071.8 ; **2** = 612.1-1071.7; **3** = 0-612
 Total power output (kW): **1** = 0; **2** = 0.001-4.742; **3** = ≥ 4.743
 Modelled power density (dBm): 1= -70--26.4659, 2= -26.4658--17.6966; 3= ≥ -17.6965
 (equivalent to 1= 0-0.002256, 2=0.002257-0.016996, 3= ≥ 0.016997 in mW/m²).