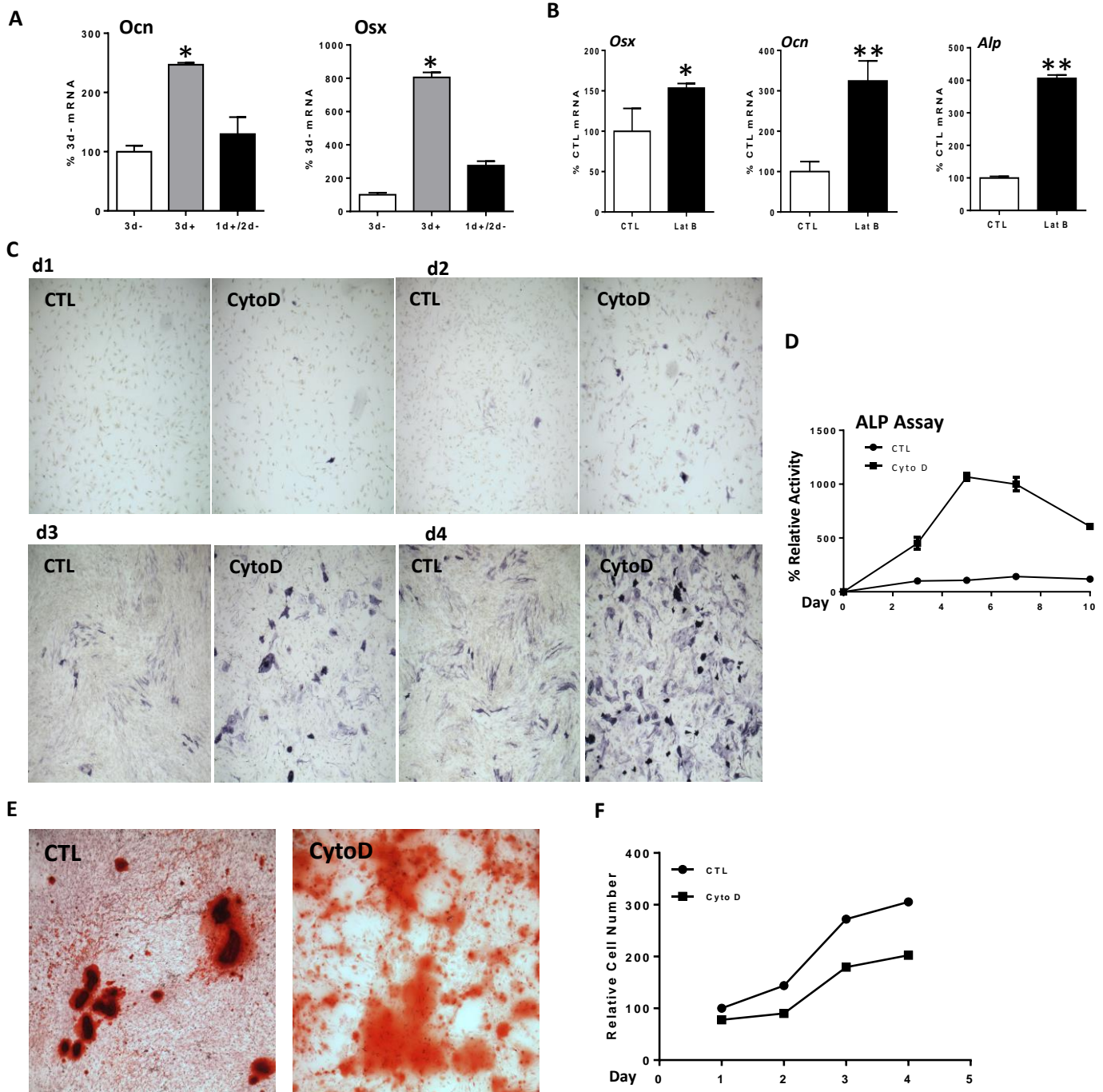


S1.



**Figure S1.** **A.** mdMSC treated with CytoD for 0 (3-), 3d (3+) or on the first day only (1+/2-), RT-PCR; \* =  $p < 0.01$ . **B.** mdMSC cultured in osteogenic medium and treated with latrunculin B (latB,  $0.4 \mu\text{M}$ ) for 3 days, RT-PCR; \* =  $p < 0.05$ , \*\* =  $p < 0.01$ . **C.** ALP staining of culture wells shows increased cell number expressing ALP. **D.** ALP activity expressed as activity per protein shows rapid increase in cell machinery disposed to ALP production, plateauing by 7 d, in cultures exposed to CytoD. ALP CTL at day 3 =  $18.5 \text{ nM}/\mu\text{g protein}/\text{min}$ . **E.** mdMSC  $\pm$  CytoD in osteogenic medium for 14 days, Alizarin Red S staining. **F.** Proliferation assay for mdMSC  $\pm$  CytoD in osteogenic medium for indicated days.