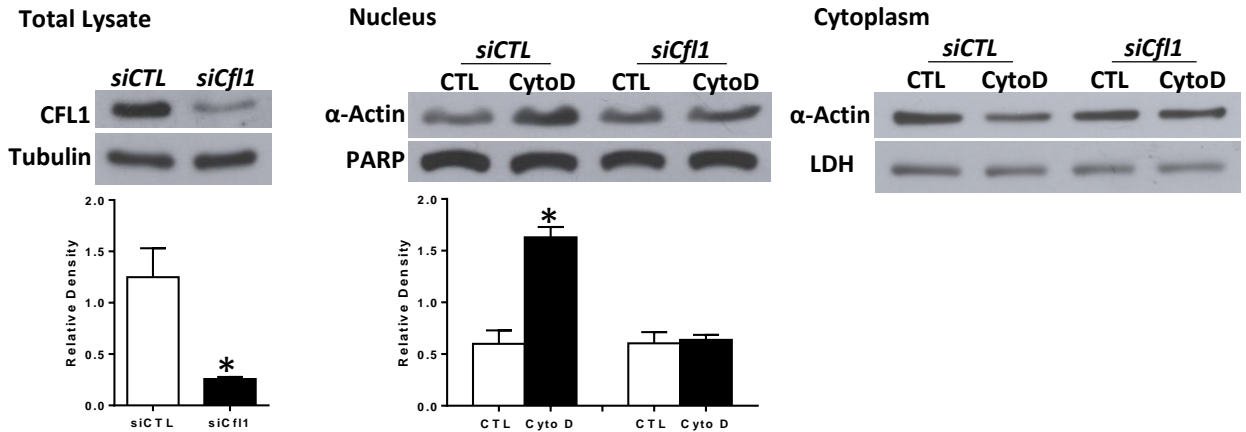
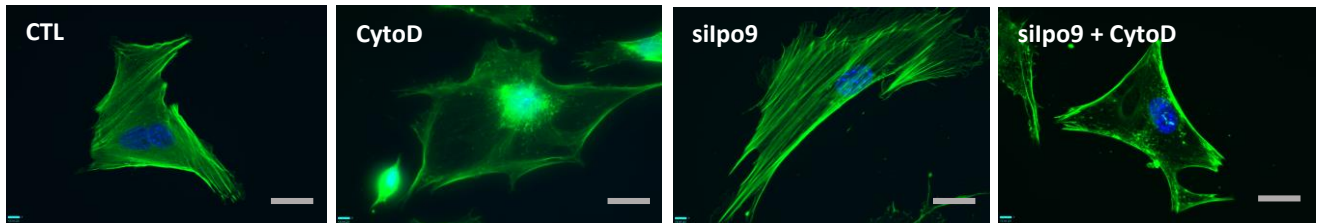


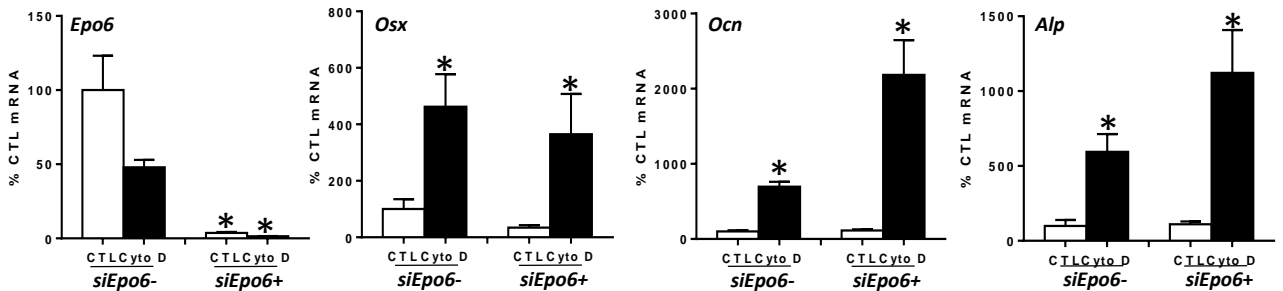
A



B



C

**Figure S3.**

A. Left panel shows cell lysate with knock-down of CFL1. 3 experiments assessed for densitometry of cofilin 1, shown in graphs under the image. *= $p < 0.05$. Right panels show nuclear and cytoplasmic IB after cofilin 1 knock-down. 3 experiments assessed for densitometry of nuclear actin, shown in graphs under the image. *= $p < 0.05$. **B.** mdMSC in osteogenic medium stained with phalloidin after importin 9 knock-down. Scale bars = 25 μ m. **C.** RT-PCR after siRNA knock-down of exportin 6. Asterisk indicates significant difference, $p < 0.01$.