

Supplementary figures

Fig A. Change in median age among men and women with a first time hospitalisation for myocardial infarction between 1984 and 2008.

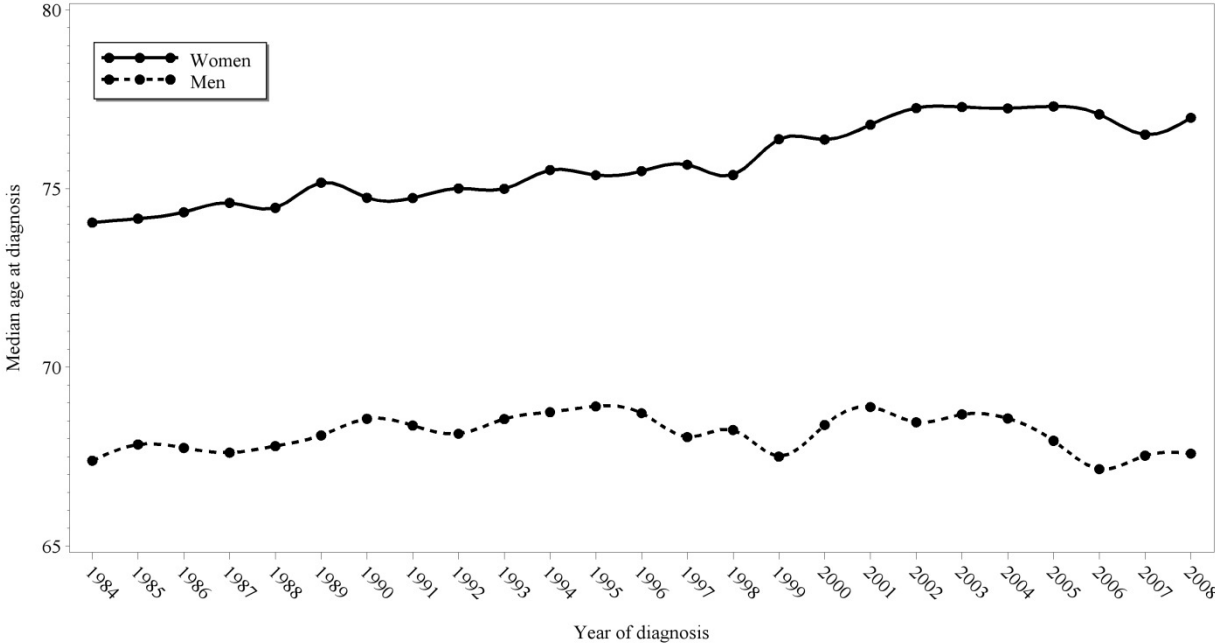
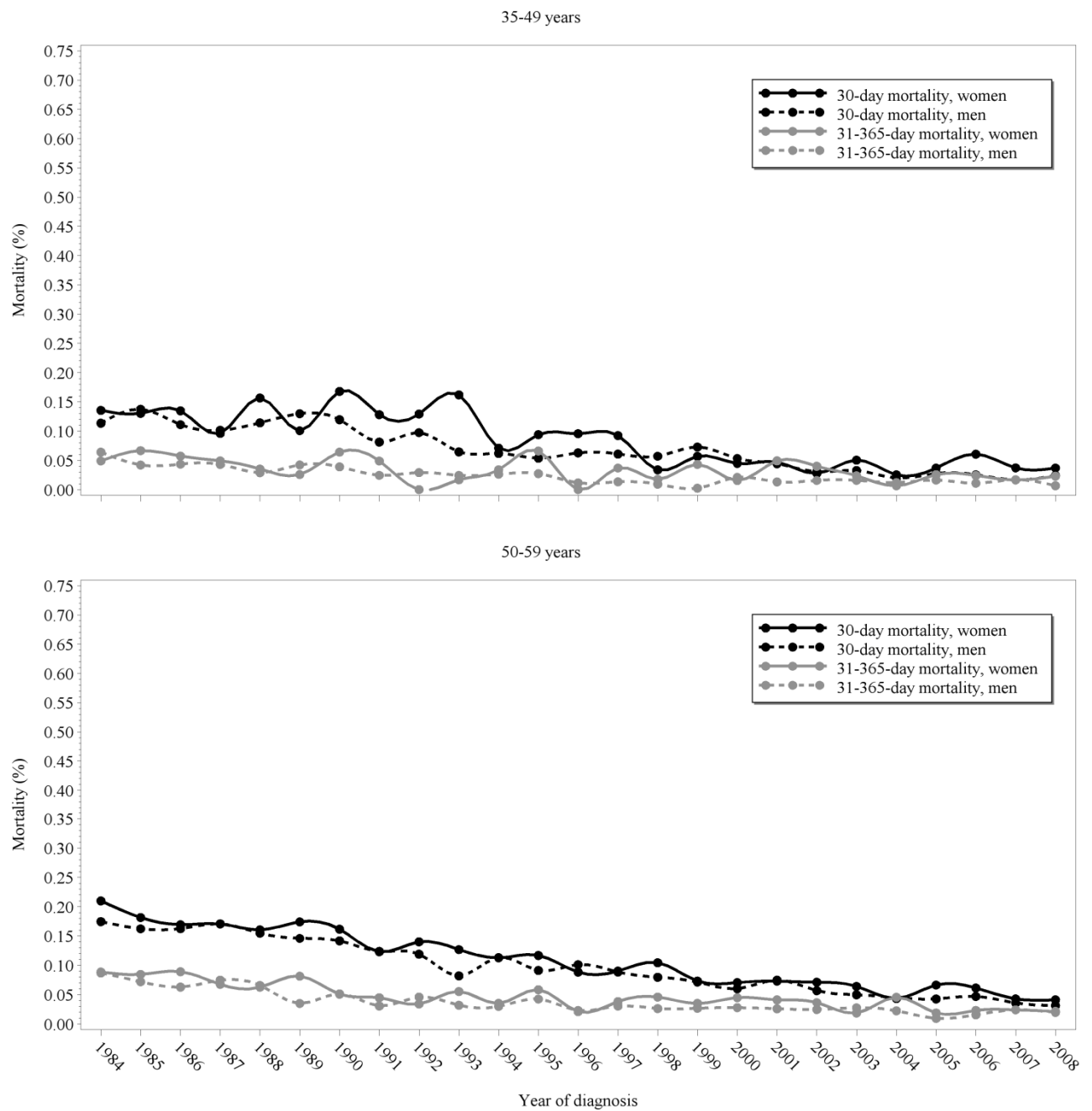
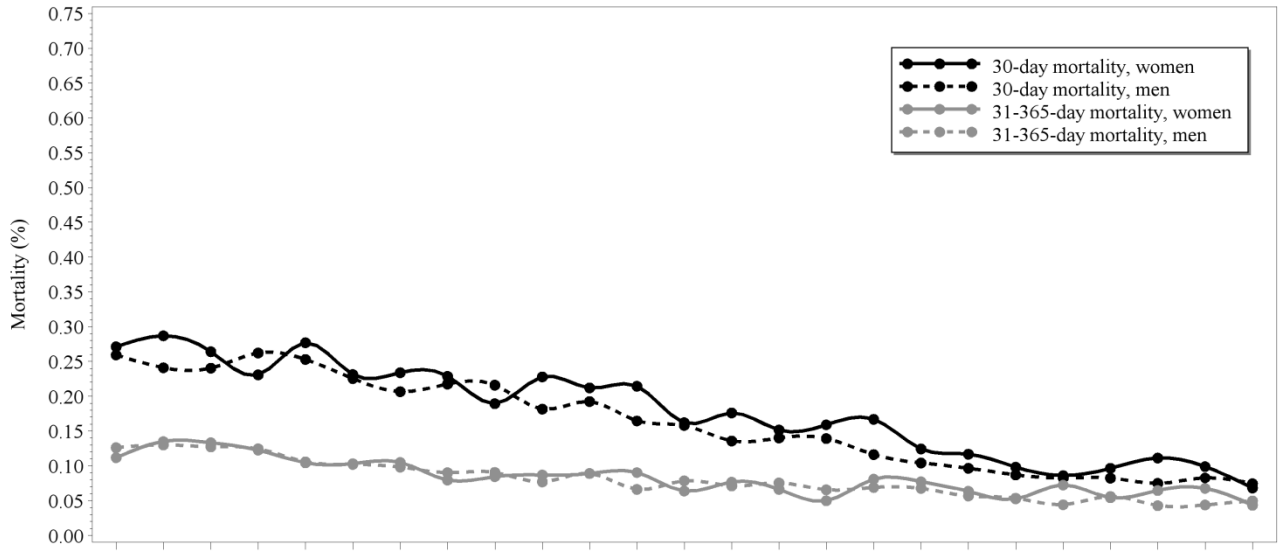


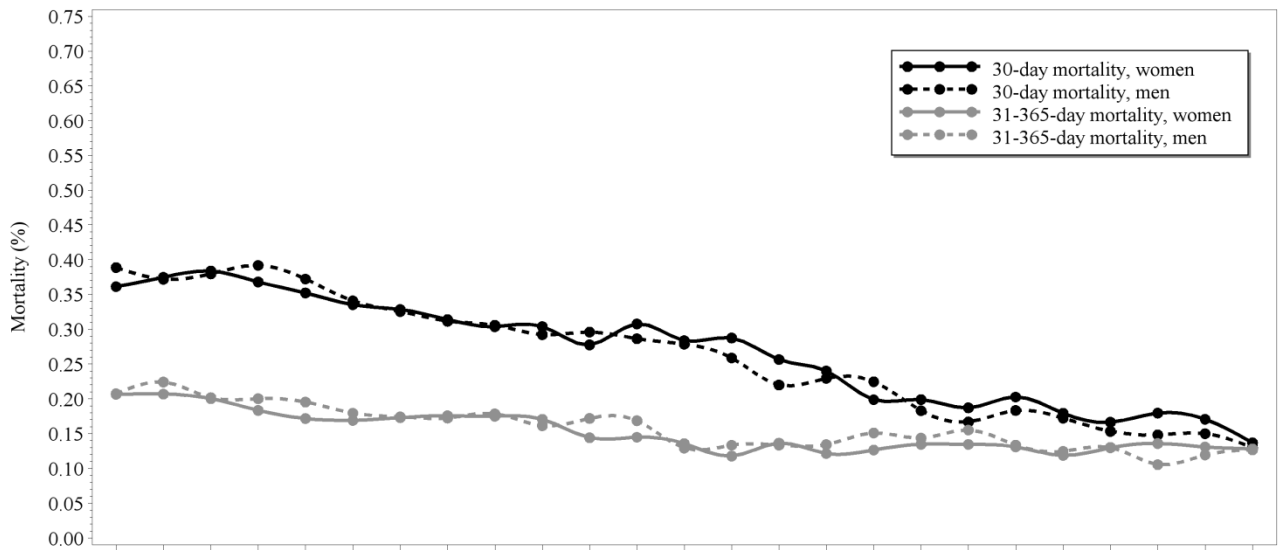
Fig B. 30-day and 31-365-day mortality risk after a first-time hospitalisation for myocardial infarction among men and women between 1984 and 2008, by age group



60-69 years



70-79 years



80 years or more

