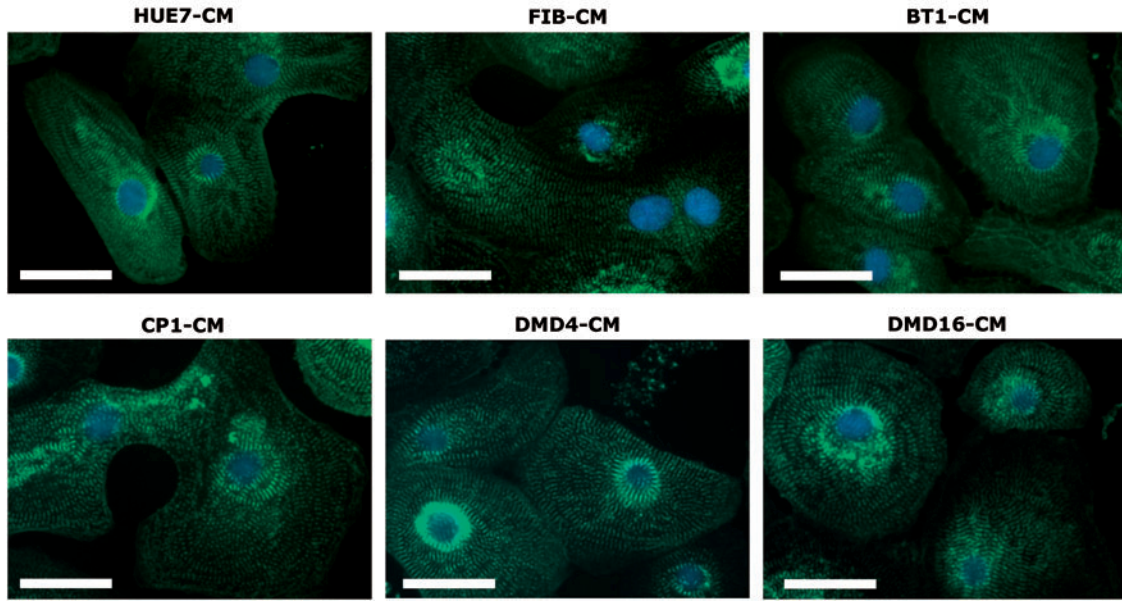


α -actinin staining of hPSC-CMs



SUPPLEMENTARY FIG. S4. Detection of α -actinin expression in hPSC-CMs by immunofluorescence. Immunofluorescence images of cardiomyocytes derived from HUES7 hESCs and FIB-, BT1-, CP1-, DMD4-, and DMD16-hiPSCs, showing positive cardiac α -actinin staining highlighting characteristic cardiac muscle striations. Scale bars represent 32 μ m. hPSC-CMs, human pluripotent stem cell-derived cardiomyocytes.