

Appendix 2: Supplementary figures [posted as supplied by author]

WEB APPENDIX FIGURE LEGEND

Figure A1. Stent type and risk of target vessel revascularization in trial with clopidogrel duration of at least 6 months. The numbers represents rate ratio (RR) and 95% credibility intervals (CrI). BMS= Bare Metal Stent; Ref= Reference.

Figure A2. Stent type and risk of target lesion revascularization in trial with clopidogrel duration of at least 6 months. The numbers represents rate ratio (RR) and 95% credibility intervals (CrI). BMS= Bare Metal Stent; Ref= Reference.

Figure A3. Stent type and risk of death in trial with clopidogrel duration of at least 6 months. The numbers represents rate ratio (RR) and 95% credibility intervals (CrI). BMS= Bare Metal Stent; Ref= Reference.

Figure A4. Stent type and risk of myocardial infarction in trial with clopidogrel duration of at least 6 months. The numbers represents rate ratio (RR) and 95% credibility intervals (CrI). BMS= Bare Metal Stent; Ref= Reference.

Figure A5. Stent type and risk of any stent thrombosis in trial with clopidogrel duration of at least 6 months. The numbers represents rate ratio (RR) and 95% credibility intervals (CrI). BMS= Bare Metal Stent; Ref= Reference.

Figure A6. Stent type and risk of ARC defined definite or probable stent thrombosis in trial with clopidogrel duration of at least 6 months. The numbers represents rate ratio (RR) and 95% credibility intervals (CrI). BMS= Bare Metal Stent; Ref= Reference.

Figure A7. Stent type and risk of ARC defined definite stent thrombosis in trial with clopidogrel duration of at least 6 months. The numbers represents rate ratio (RR) and 95% credibility intervals (CrI). BMS= Bare Metal Stent; Ref= Reference.

Figure A8. Stent type and risk of target vessel revascularization in a sensitivity analysis including the Zotarolimus-Resolute trials (target vessel/lesion failure substituted for TVR for the Resolute trials). The numbers represents rate ratio (RR) and 95% credibility intervals (CrI). BMS= Bare Metal Stent; Ref= Reference.

Figure B1. Q-Q plot for the network of all trials for the outcome of target vessel revascularization.

Figure B2. Q-Q plot for the network of all trials for the outcome of target lesion revascularization.

Figure B3. Q-Q plot for the network of all trials for the outcome of death.

Figure B4. Q-Q plot for the network of all trials for the outcome of myocardial infarction.

Figure B5. Q-Q plot for the network of all trials for the outcome of any stent thrombosis.

Figure B6. Q-Q plot for the network of all trials for the outcome of ARC defined definite or probable stent thrombosis.

Figure B7. Q-Q plot for the network of all trials for the outcome of ARC defined definite stent thrombosis.

Figure A1

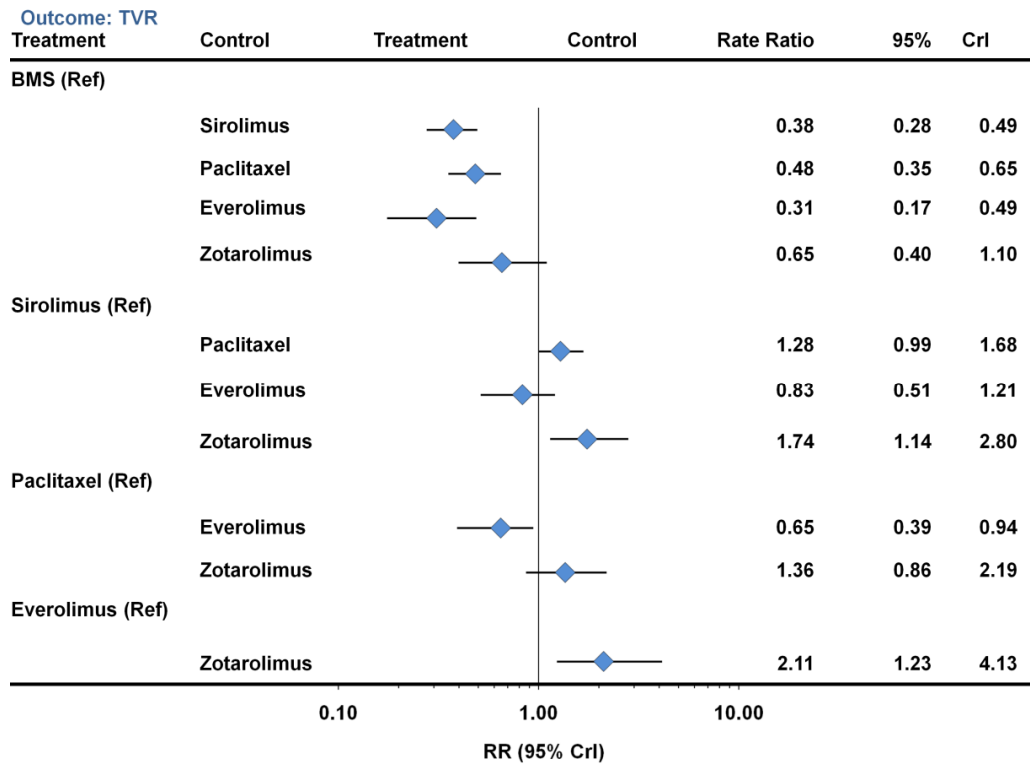


Figure A2

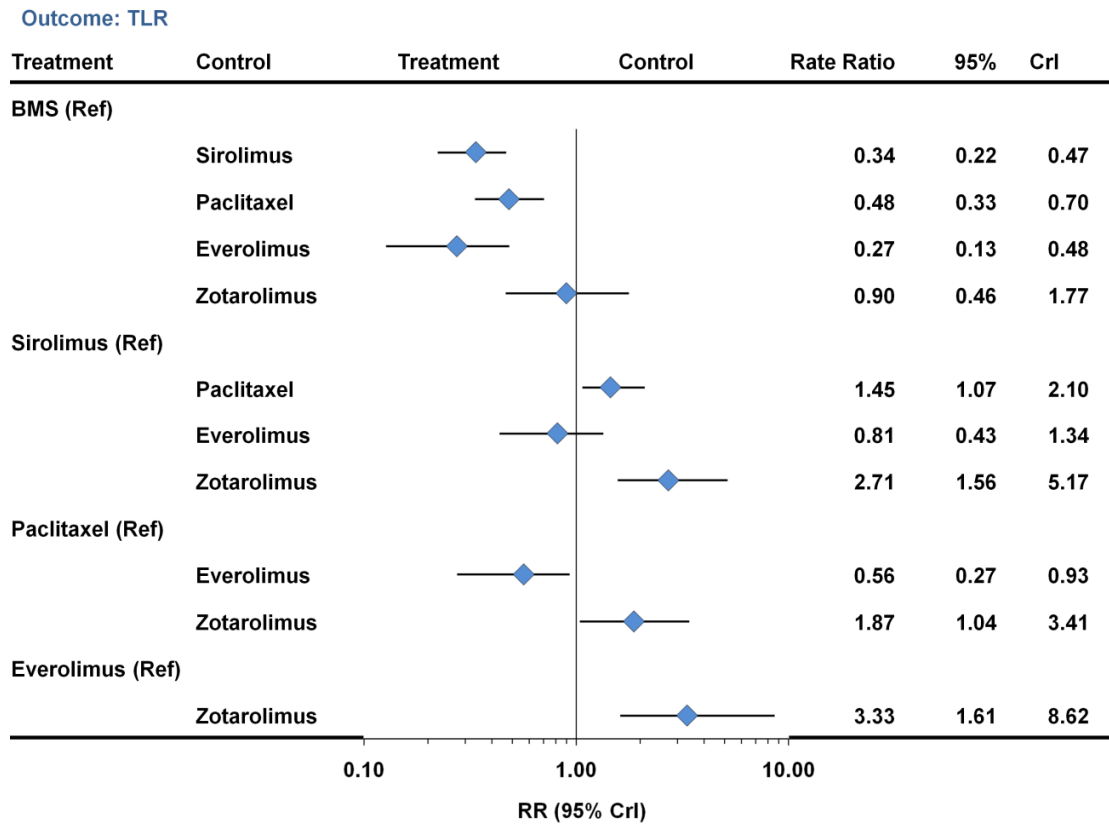


Figure A3

Outcome: Death

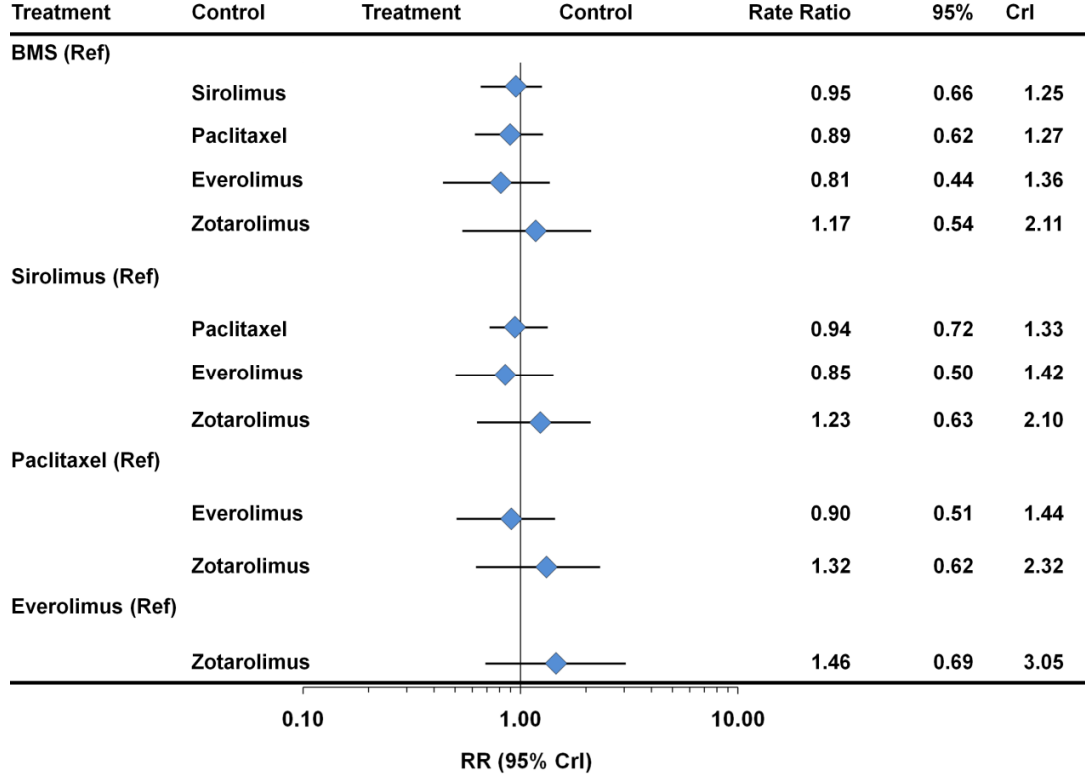


Figure A4

Outcome: MI

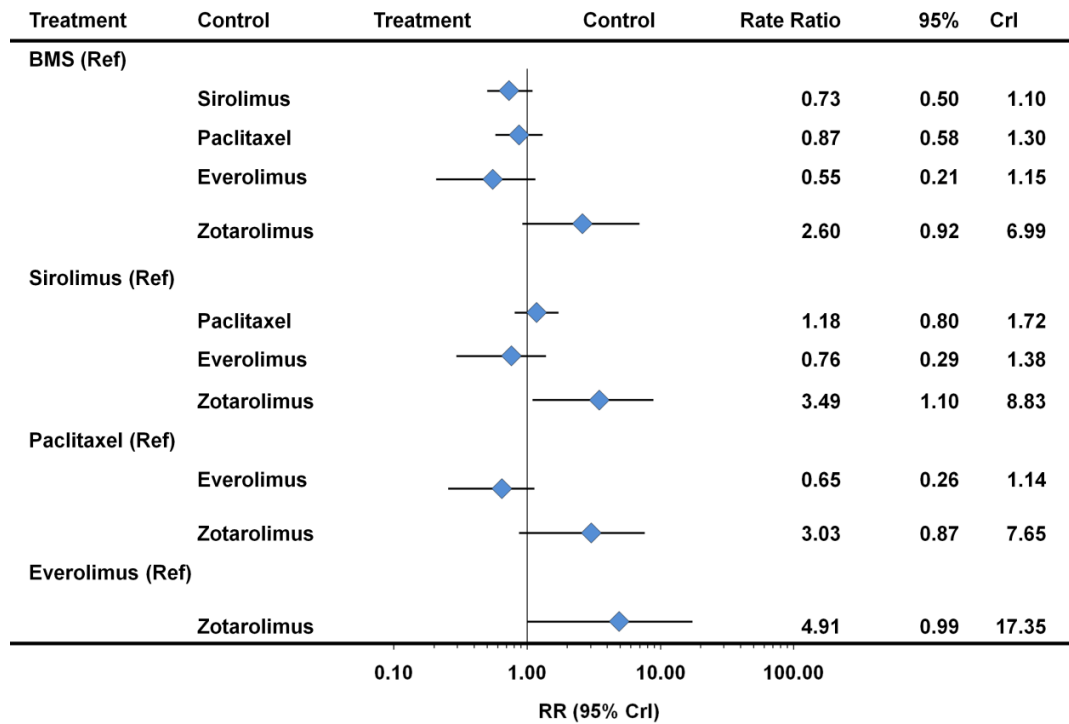


Figure A5

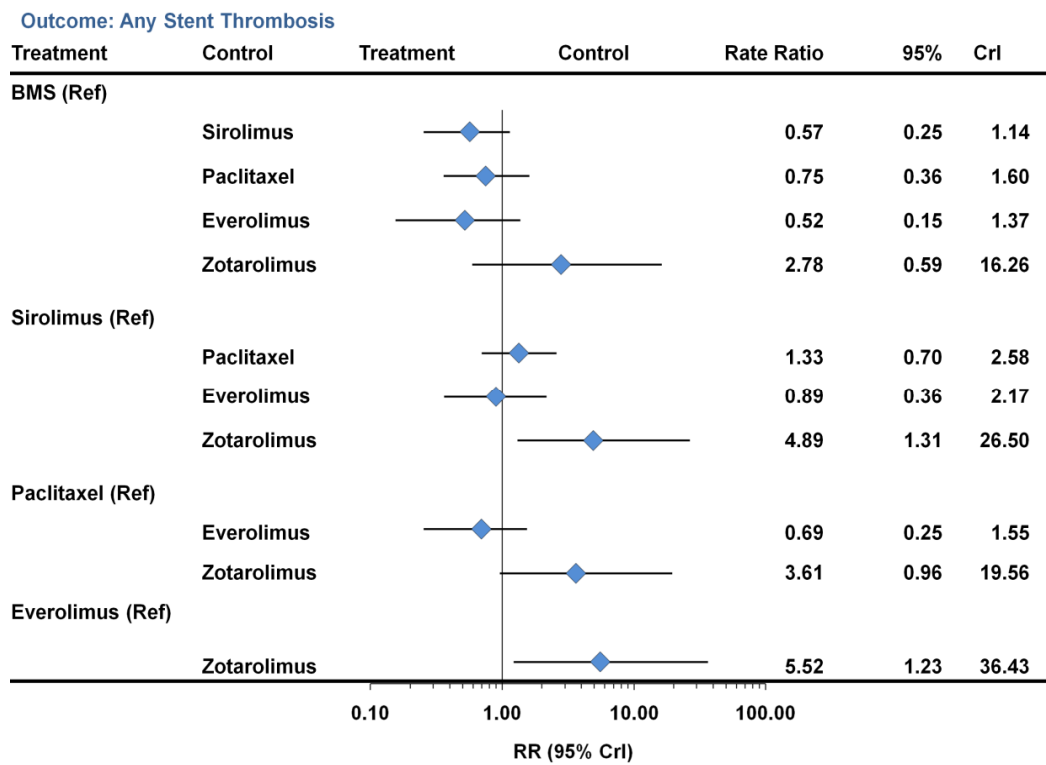


Figure A6

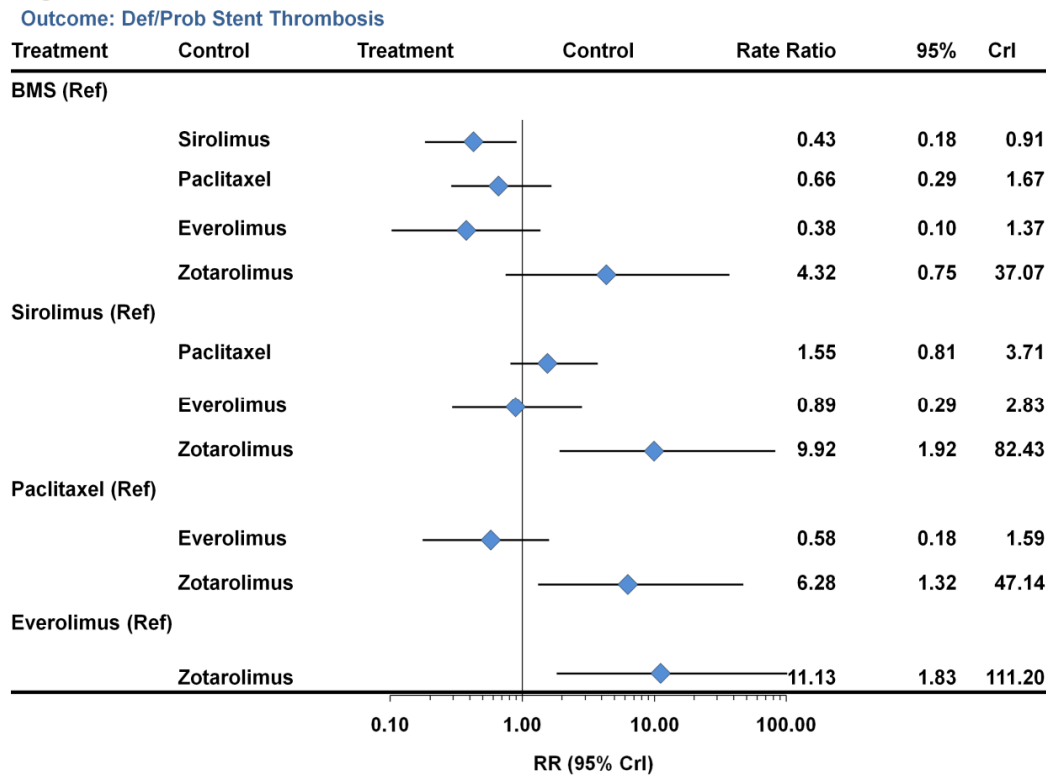


Figure A7.

Outcome: Def Stent Thrombosis

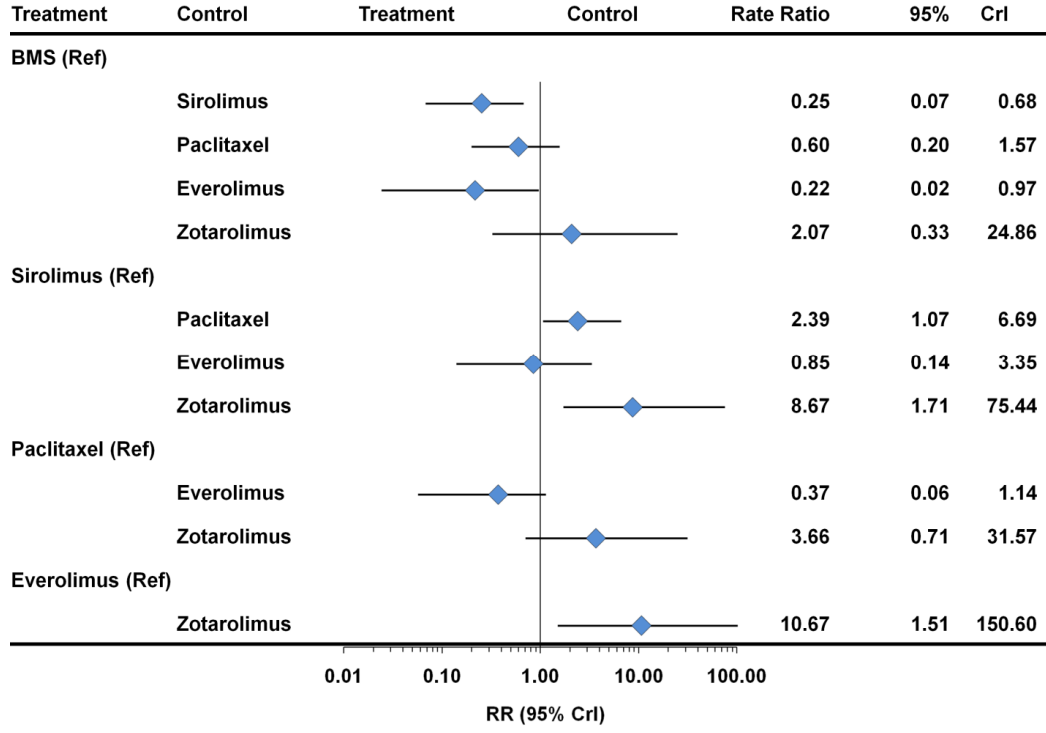


Figure A8.

Outcome: TVR

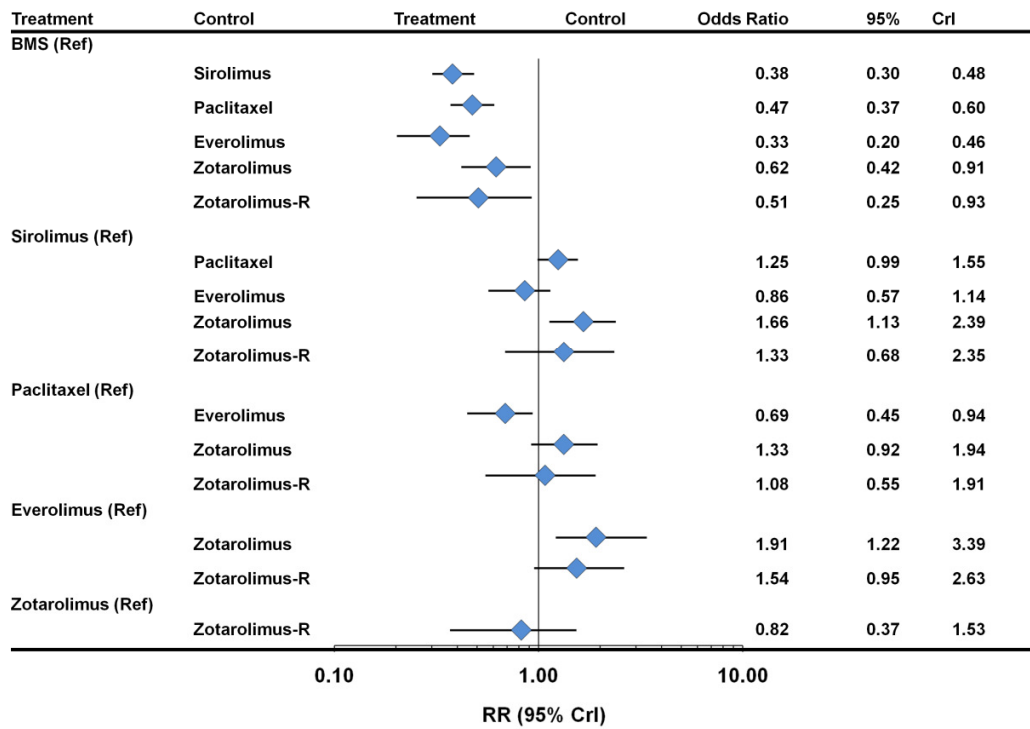


Figure B1.

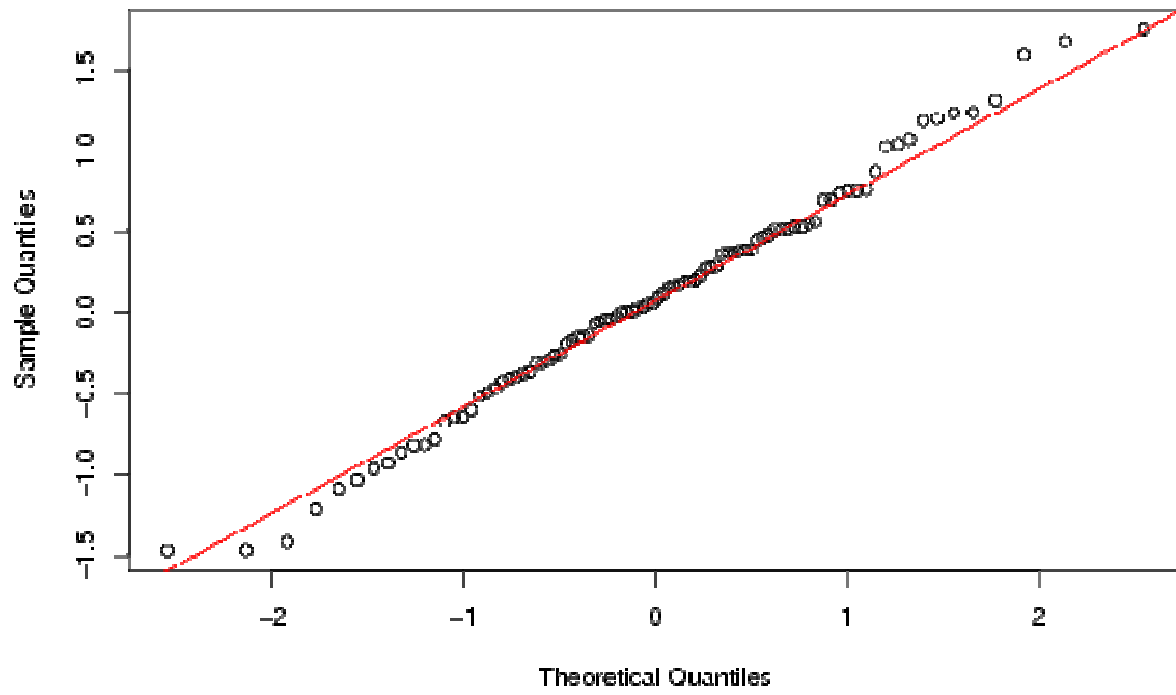


Figure B2.

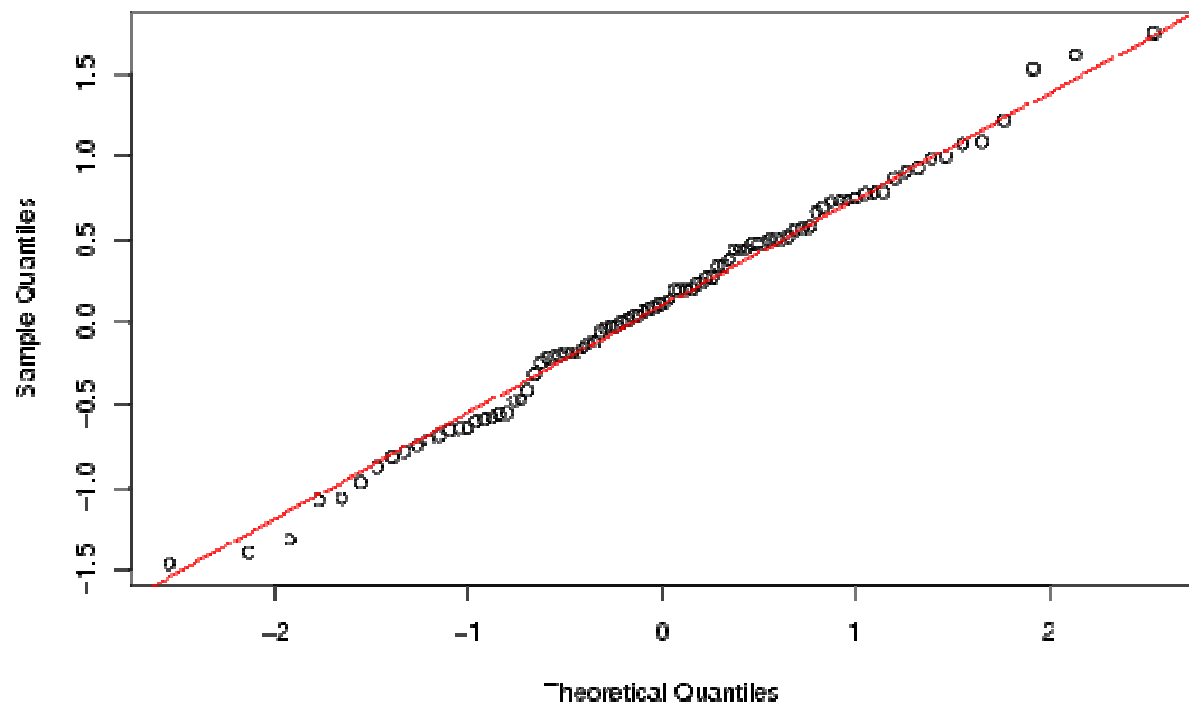


Figure B3.

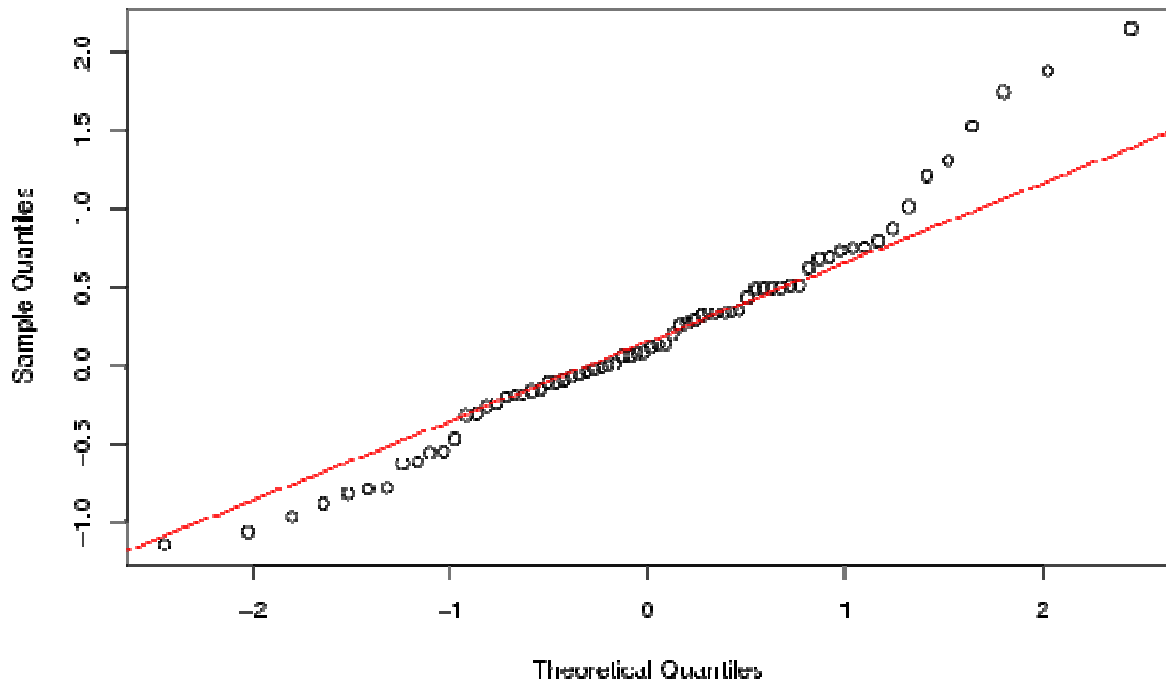


Figure B4.

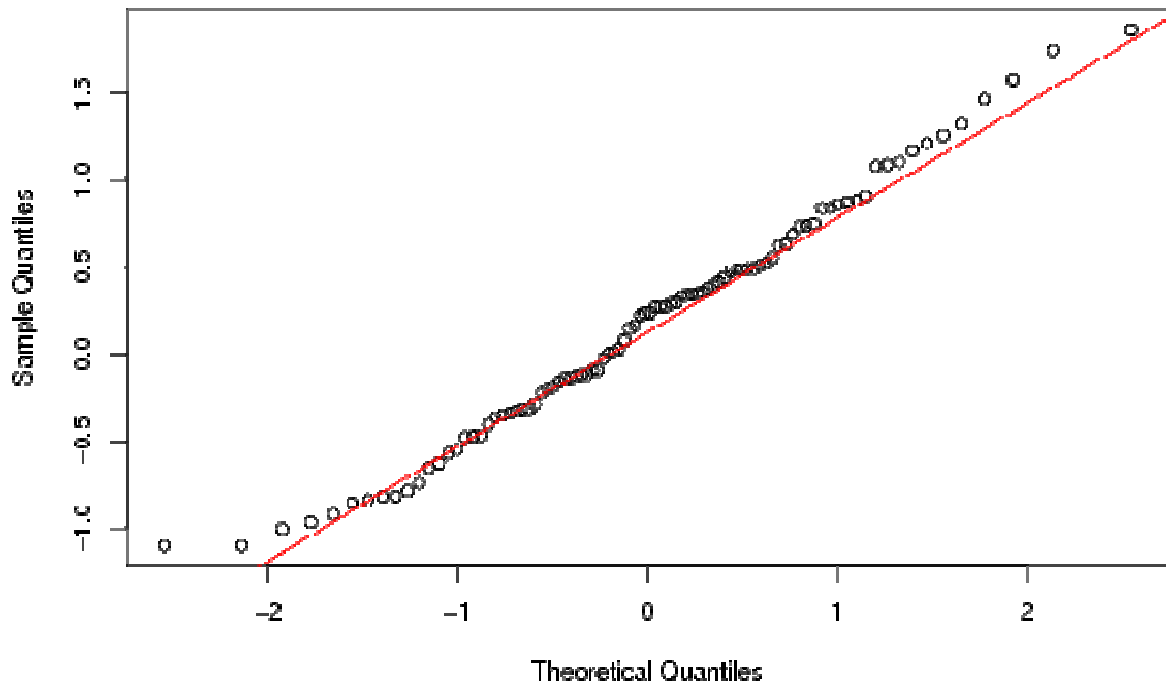


Figure B5.

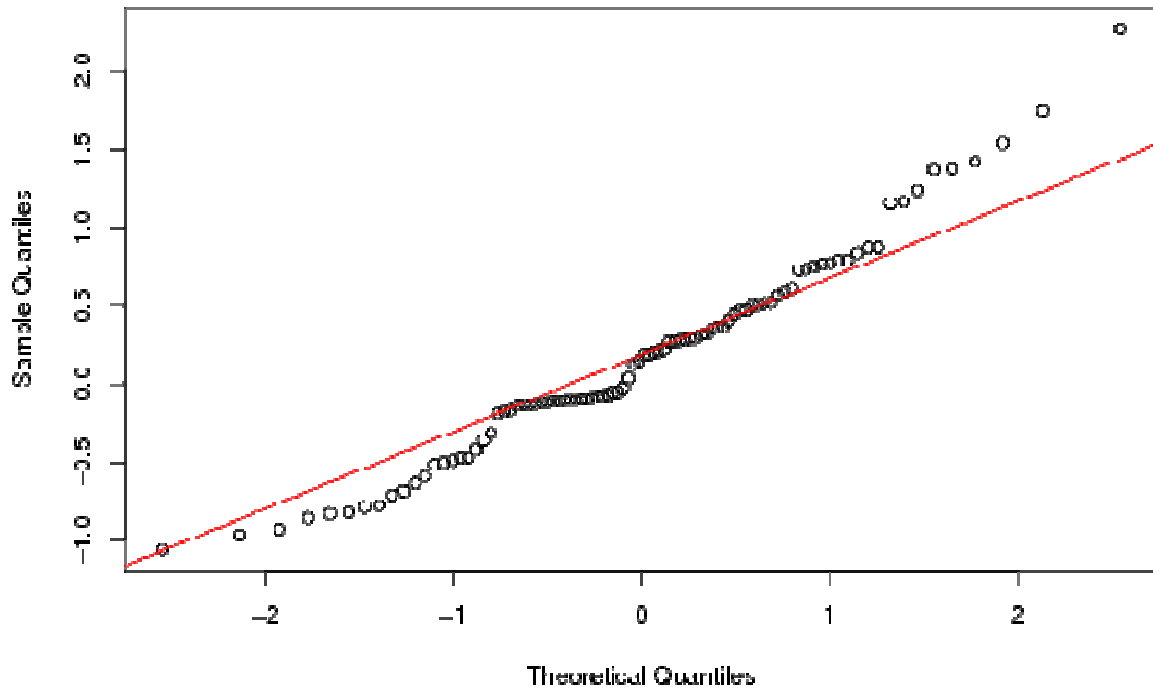


Figure B6.

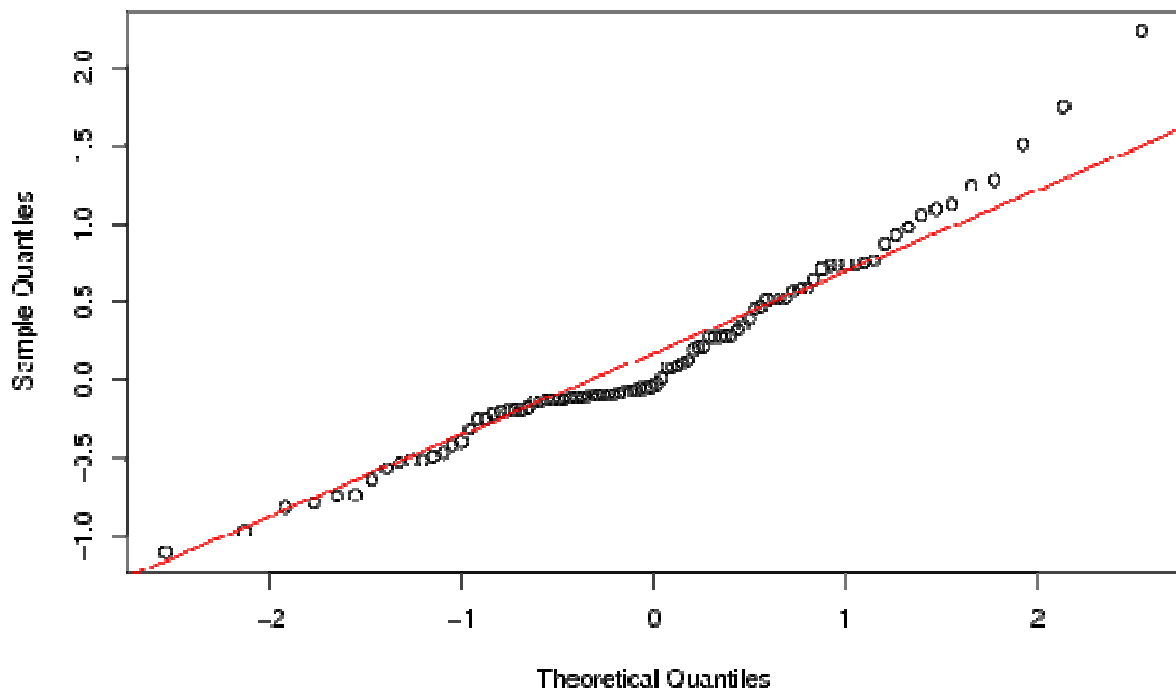


Figure B7.

