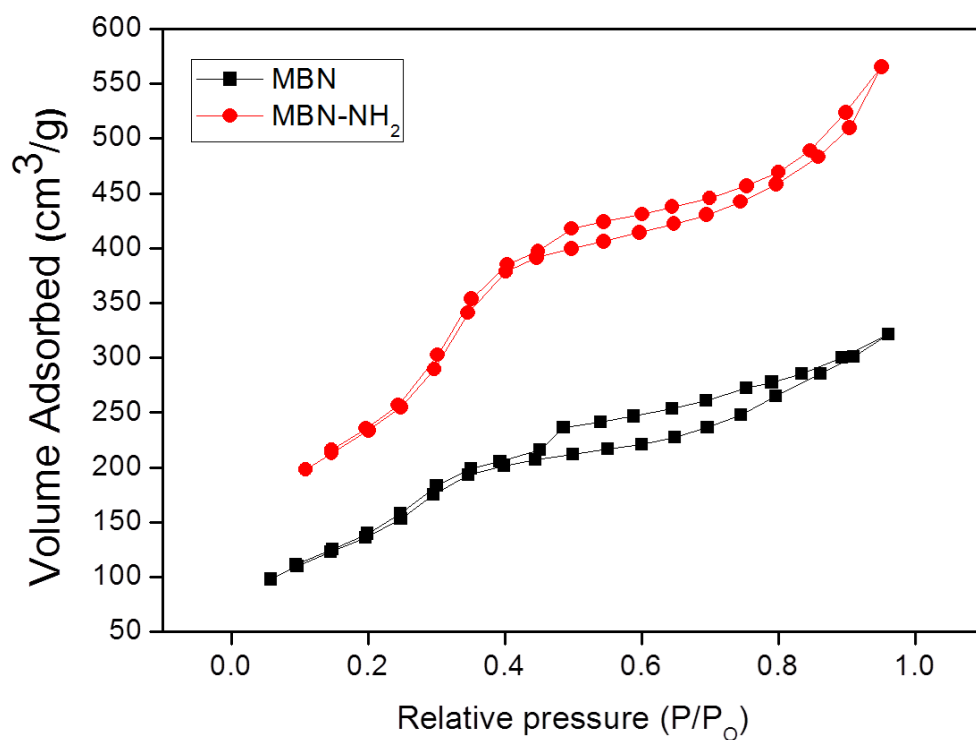
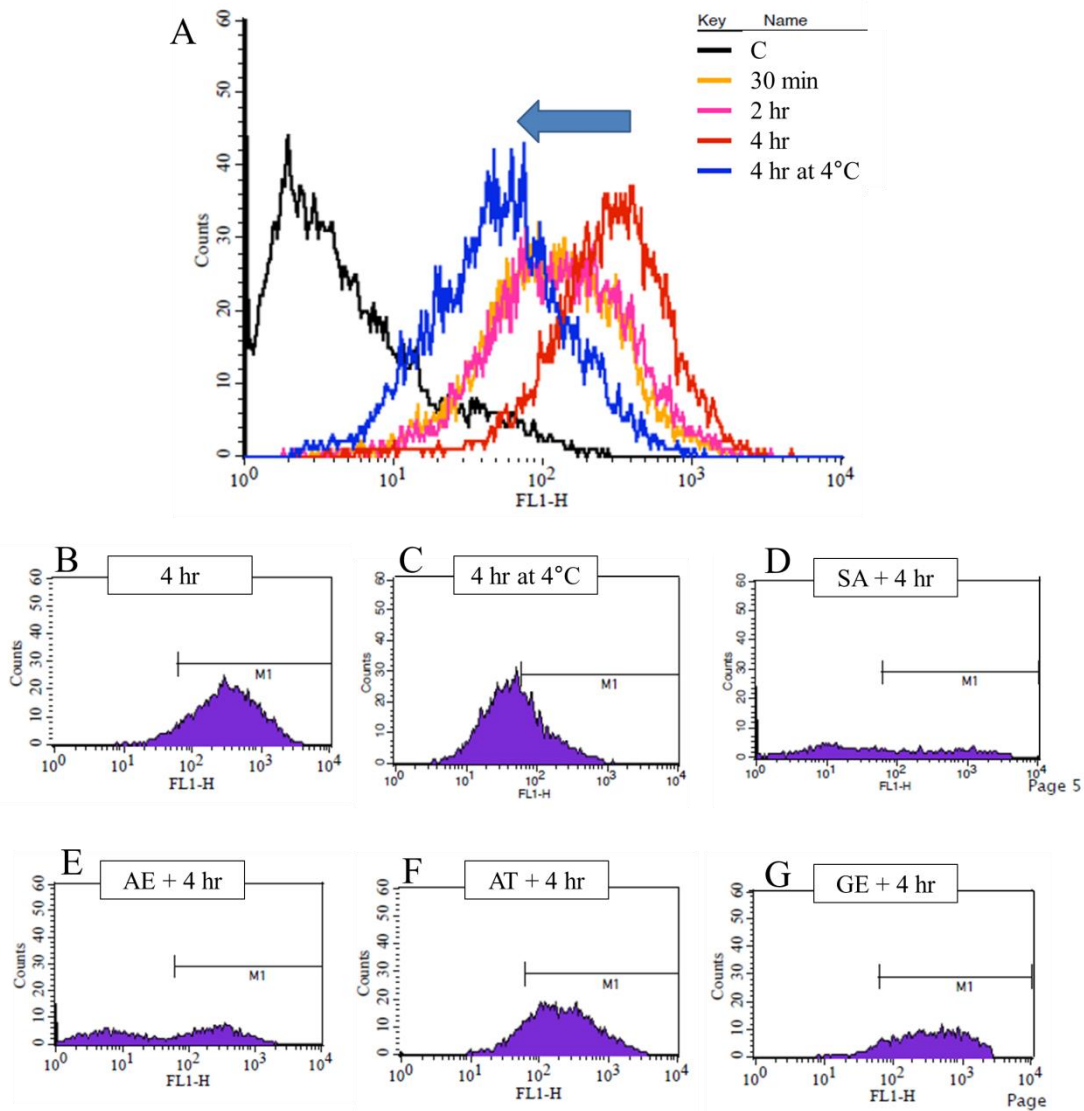


Supporting Information file (S1) for the results from BET and flow cytometry analysis.



**Figure A.** Results of Brunauer–Emmett–Teller analysis showing typical mesoporous N<sub>2</sub> adsorption–desorption curve.



**Figure B.** Uptake of FITC-labeled MBNs-NH<sub>2</sub> into rDPSCs within 4 hours with or without pre-treatment using various types of inhibitors or culture conditions. Incubation at 4°C for 4 hours was used to prevent ATP-dependent endocytosis. (a) Uptake as characterized by flow cytometry according to incubation time. (b-g) Uptake as characterized by flow cytometry according to pre-treatment condition (1 hour). Pre-treatments included 100 mM of sodium azide (SA), inhibitor of ATP-dependent endocytosis; 2.5 mM of 5-(N-ethyl-N-isopropyl) amiloride (AE), inhibitor of macropinocytosis; 1 mM of amantadine-HCl (AT), inhibitor of clathrin-mediated endocytosis; and 100 mM of genistein (GE), inhibitor of caveolae-mediated endocytosis.