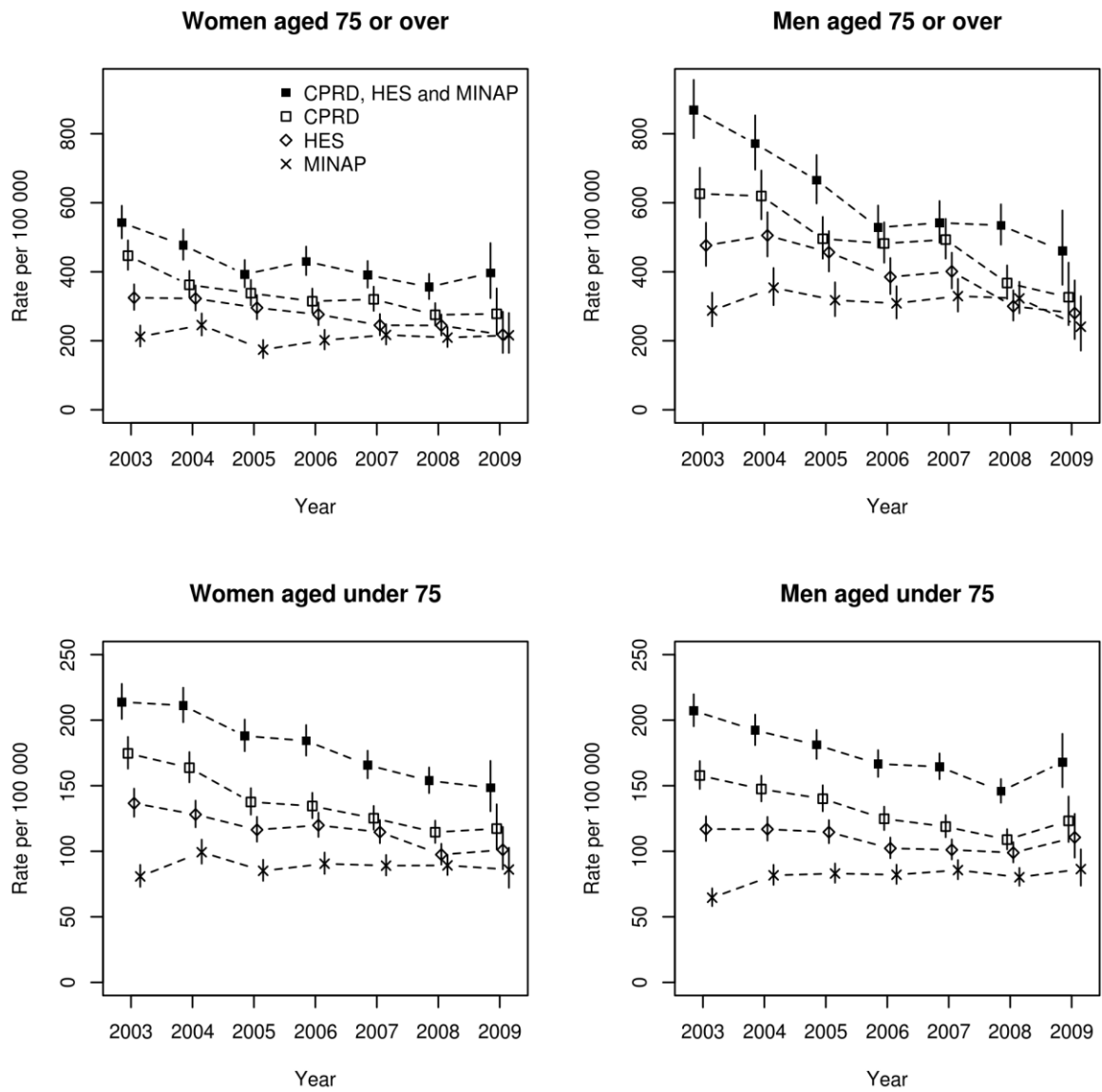
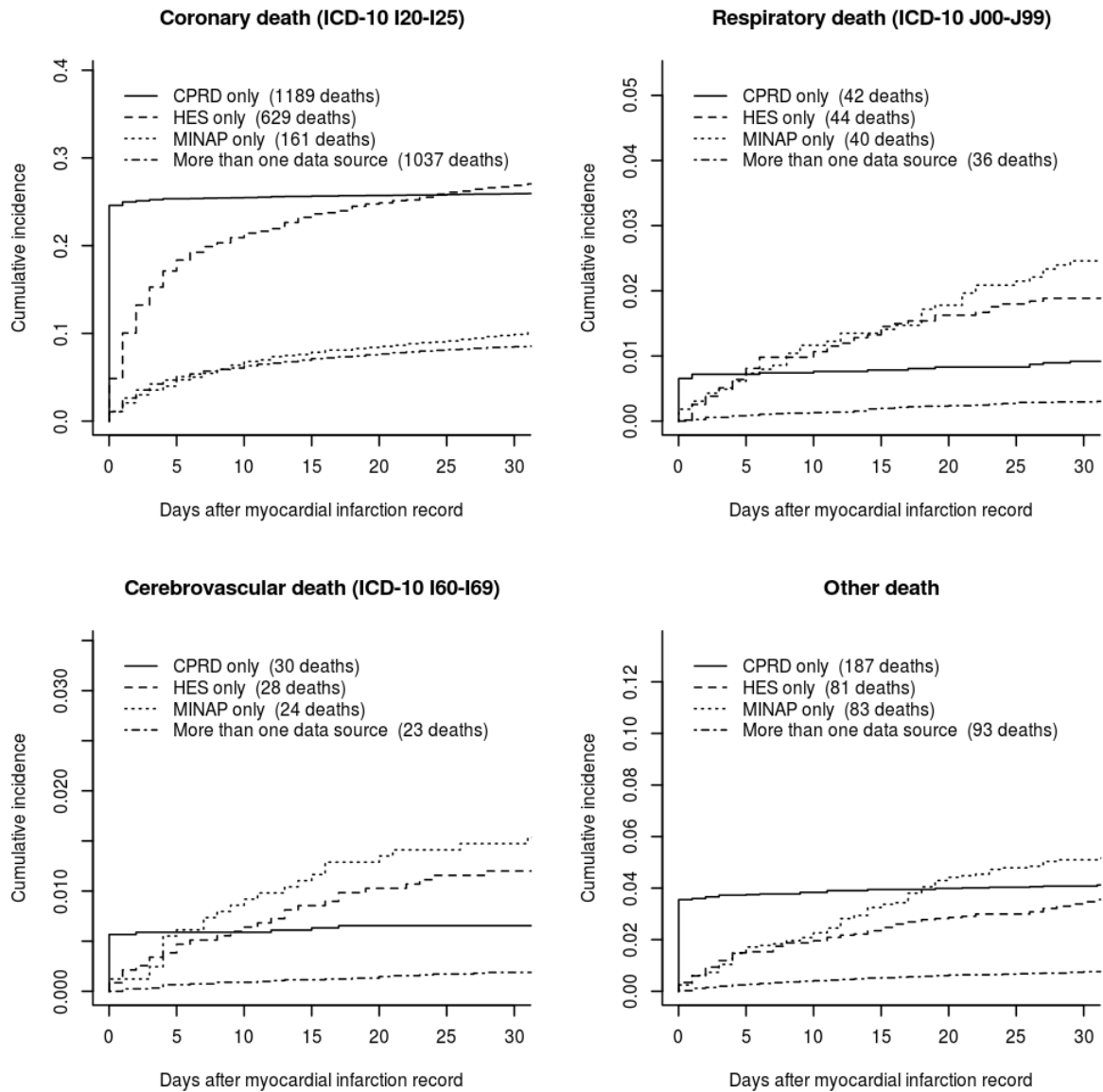


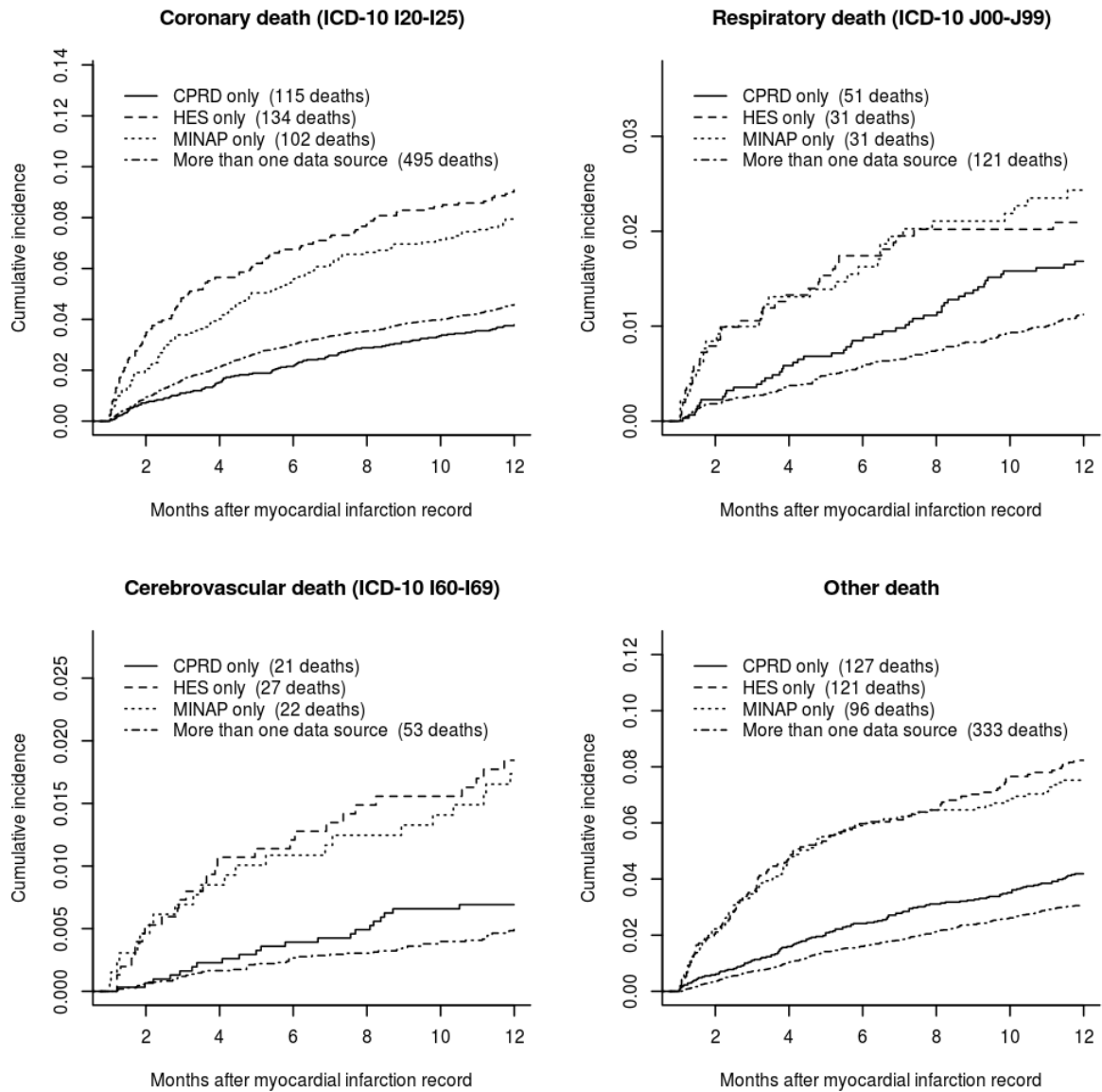
**Supplementary Figure 1** Incidence of fatal and non-fatal myocardial infarction by age group, sex and year, standardised to the European Standard Population, using 1 or 3 data sources.



**Supplementary Figure 2** Cumulative incidence curves for cause-specific mortality in the first month after myocardial infarction recorded in MINAP but not HES or CPRD (N=1634), in HES but not CPRD or MINAP (N=2352), in CPRD but not HES or MINAP (N=4588), or in more than one source (N=12 244).



**Supplementary Figure 3** Cumulative incidence curves for cause-specific mortality in patients who survived the first month after myocardial infarction recorded in MINAP but not HES or CPRD (N=1309), in HES but not CPRD or MINAP (N=1529), in CPRD but not HES or MINAP (N=3104), or in more than one source (N=10 991).



**Supplementary Figure 4** Histograms showing the number of days' interval between nearest matched myocardial infarction records for patients who survived more than 7 days in each pair of data sources: MINAP and HES (N=6851), CPRD and HES (N=9093), CPRD and MINAP (N=6660).

