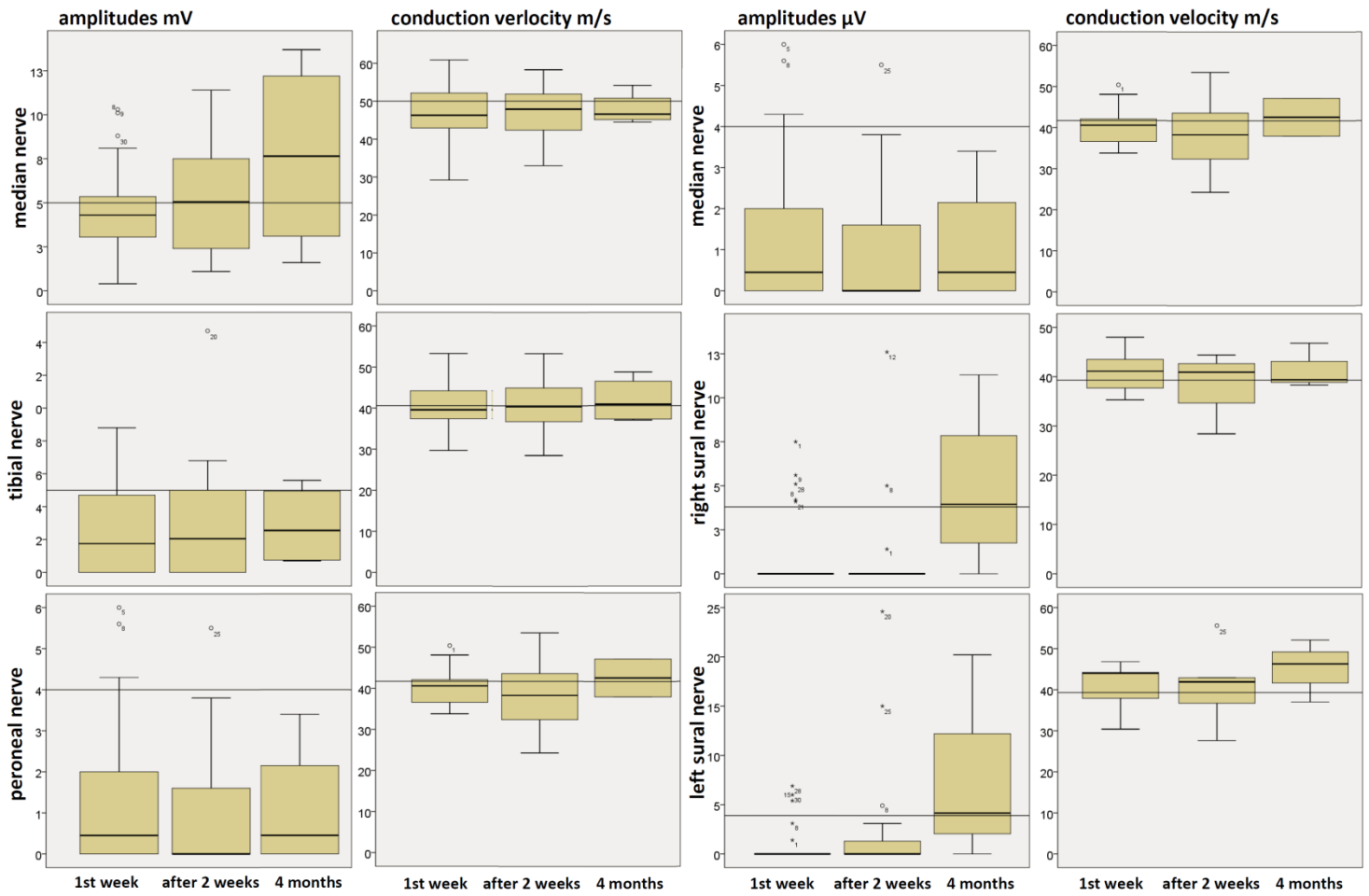


motor nerves

sensory nerves



Appendix 2: Nerve conduction studies. Amplitudes of compound potentials in motor and sensory nerves are considerably decreased, while conduction velocity is marginally impaired. Note that nerve conduction studies are able to detect CIP early in the course of sepsis, but amplitudes do not change considerably over the course of the disease. Horizontal lines show the normative values of the measurements.