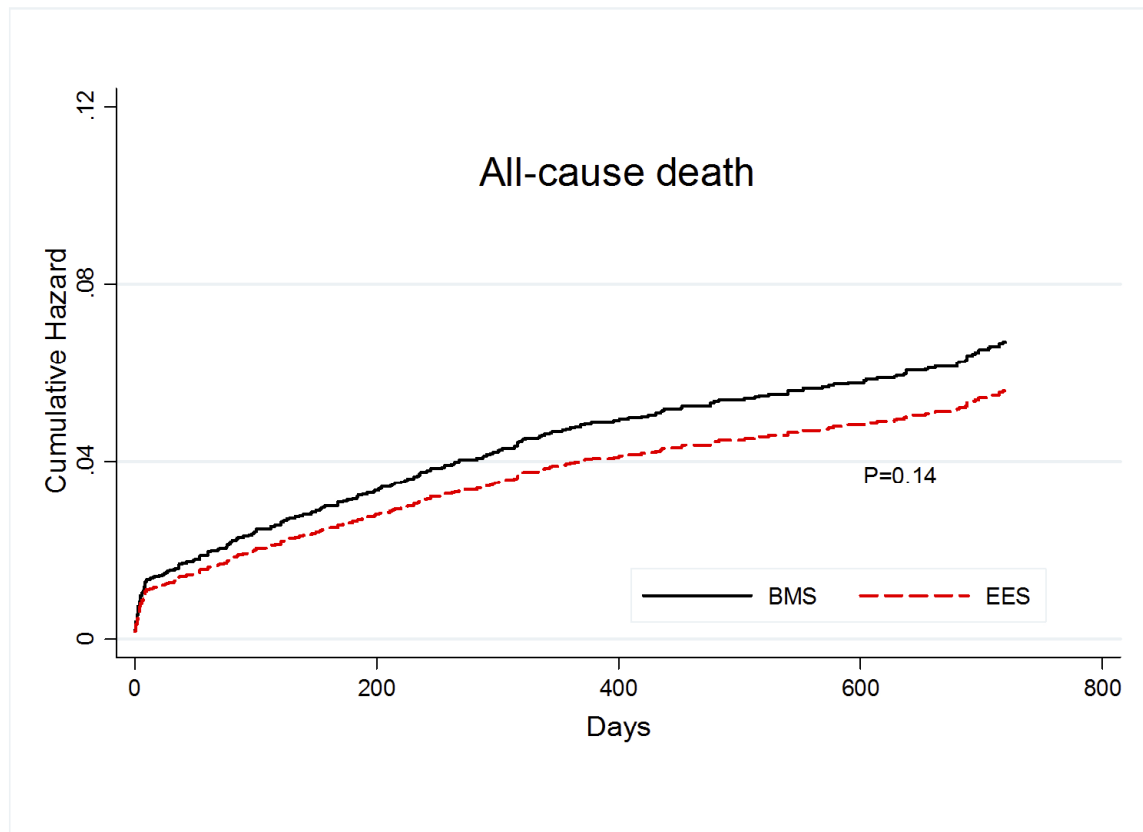
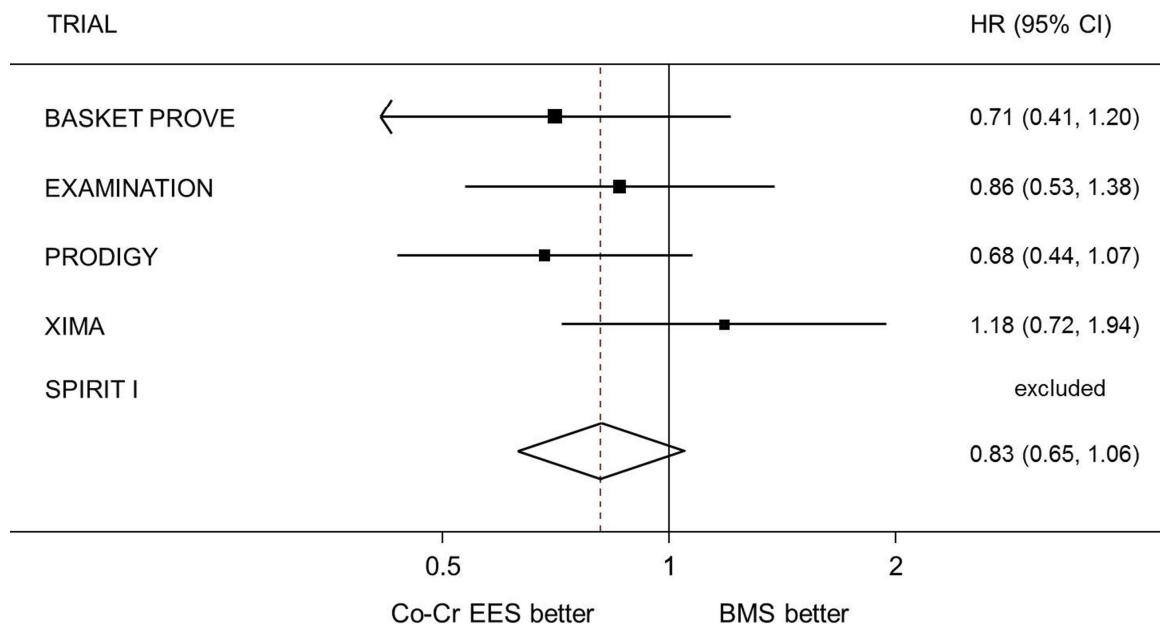


**Appendix 2: Supplementary figures [posted as supplied by author]**

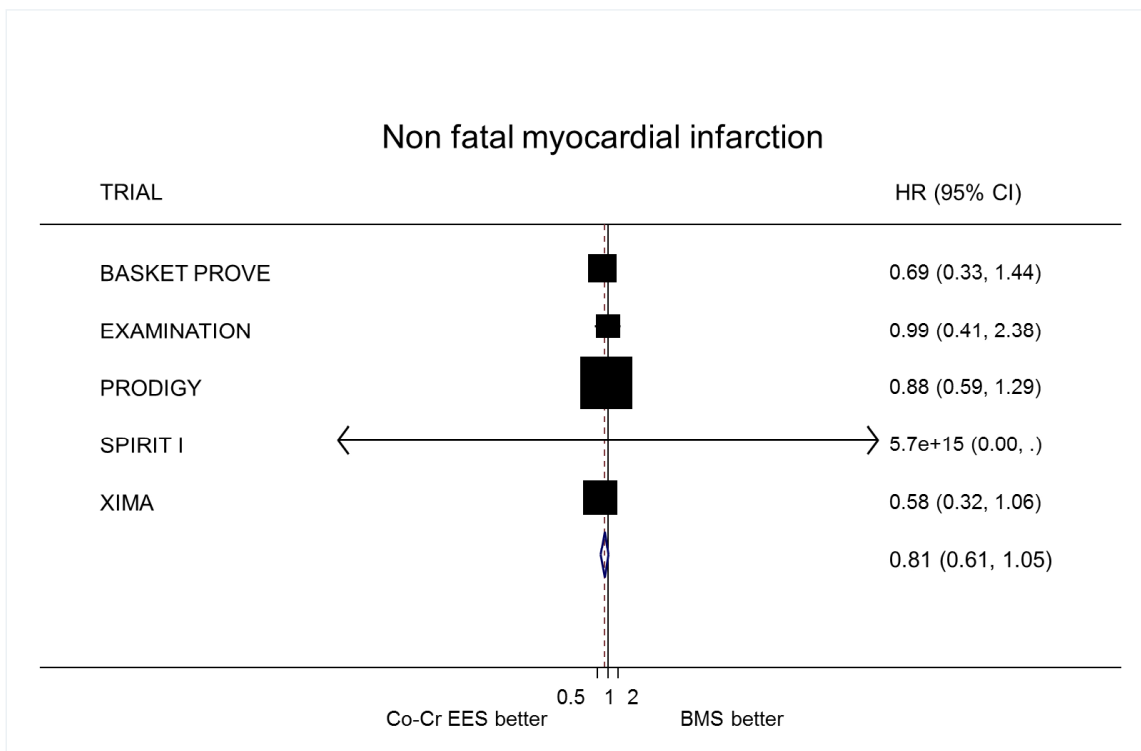
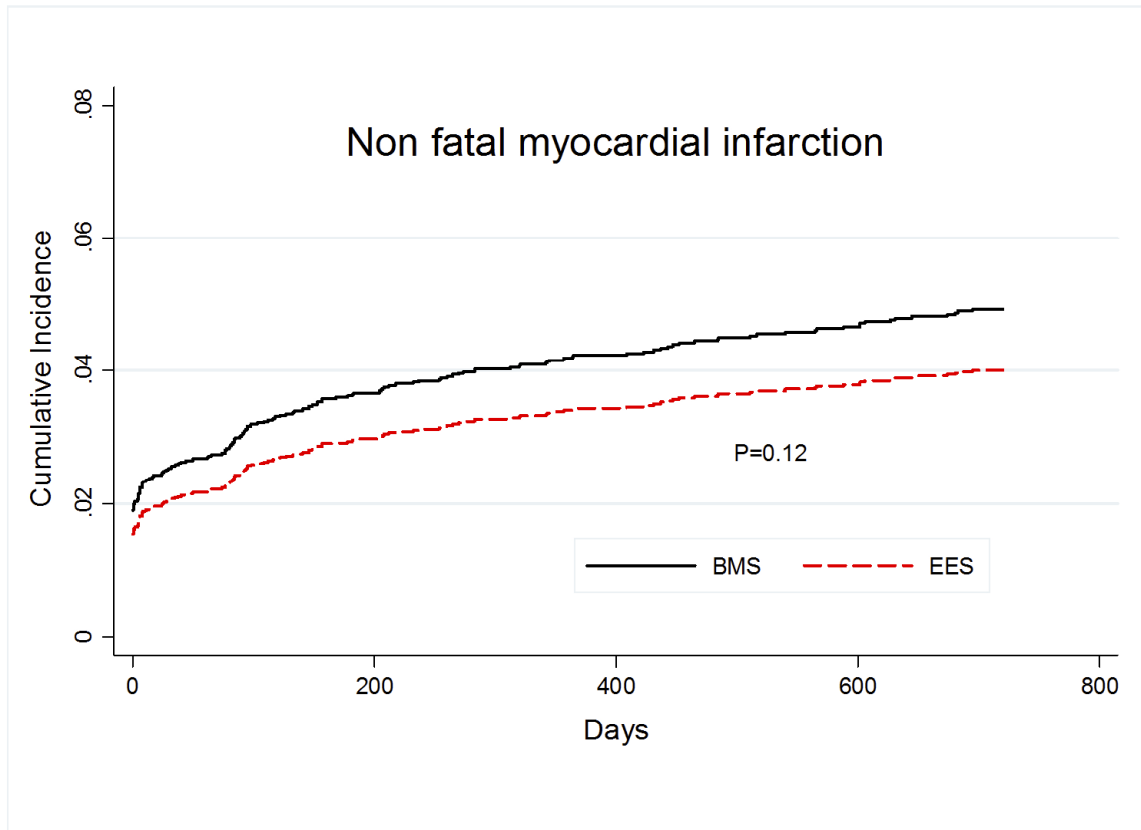
**Fig A** Cumulative hazard curve for all-cause death and forest plot with point estimates and 95% CI for all-cause death for each included study and pooled estimate from simple Cox regression model stratified by trial with random effects . Abbreviations: Co-Cr EES, cobalt-chromium everolimus eluting; BMS, bare metal stent; HR, hazard ratio; CI, confidence intervals.



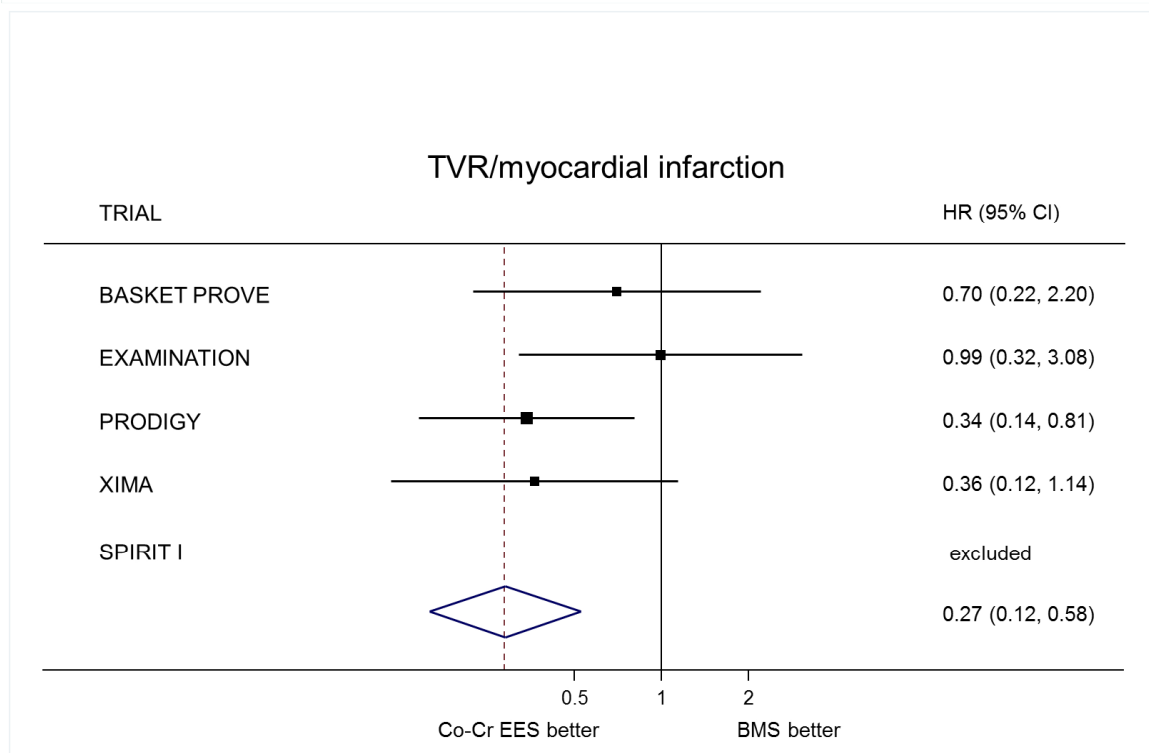
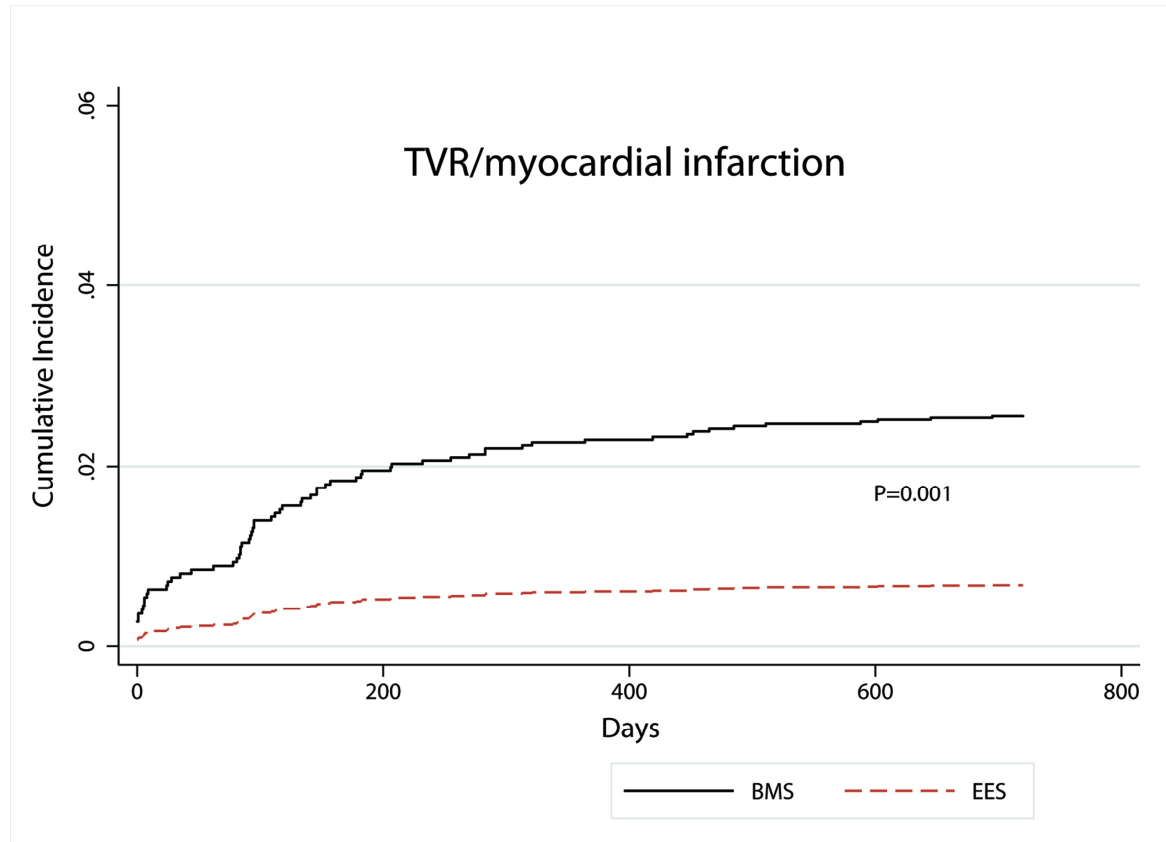
**ALL-CAUSE DEATH**



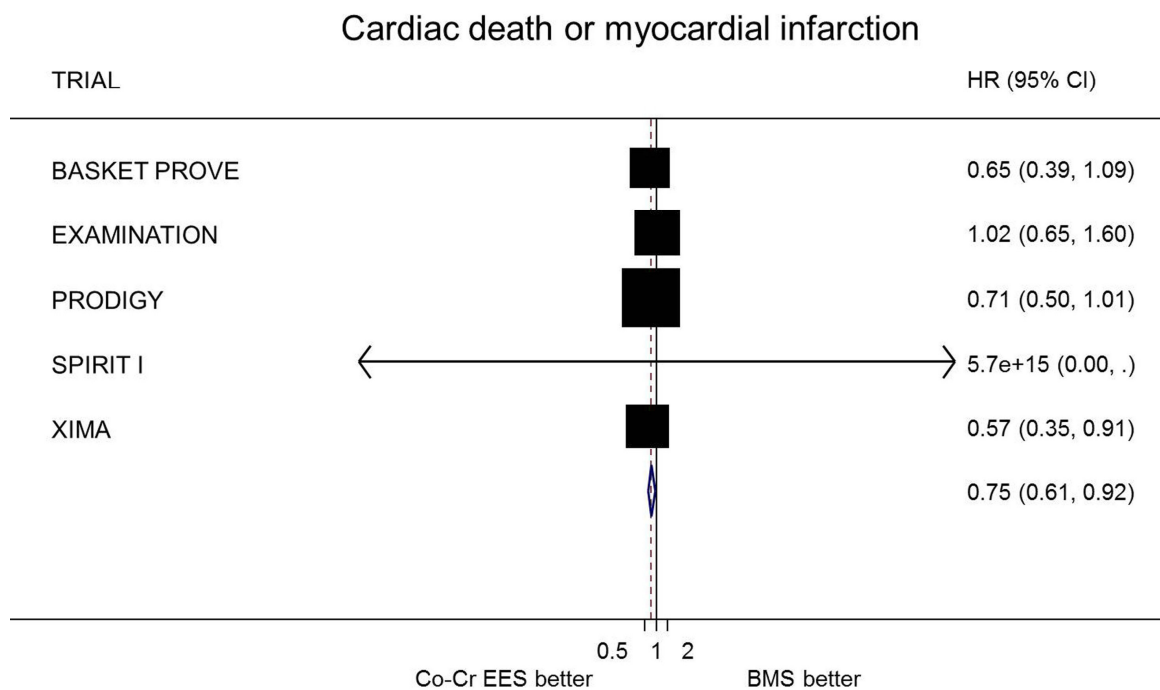
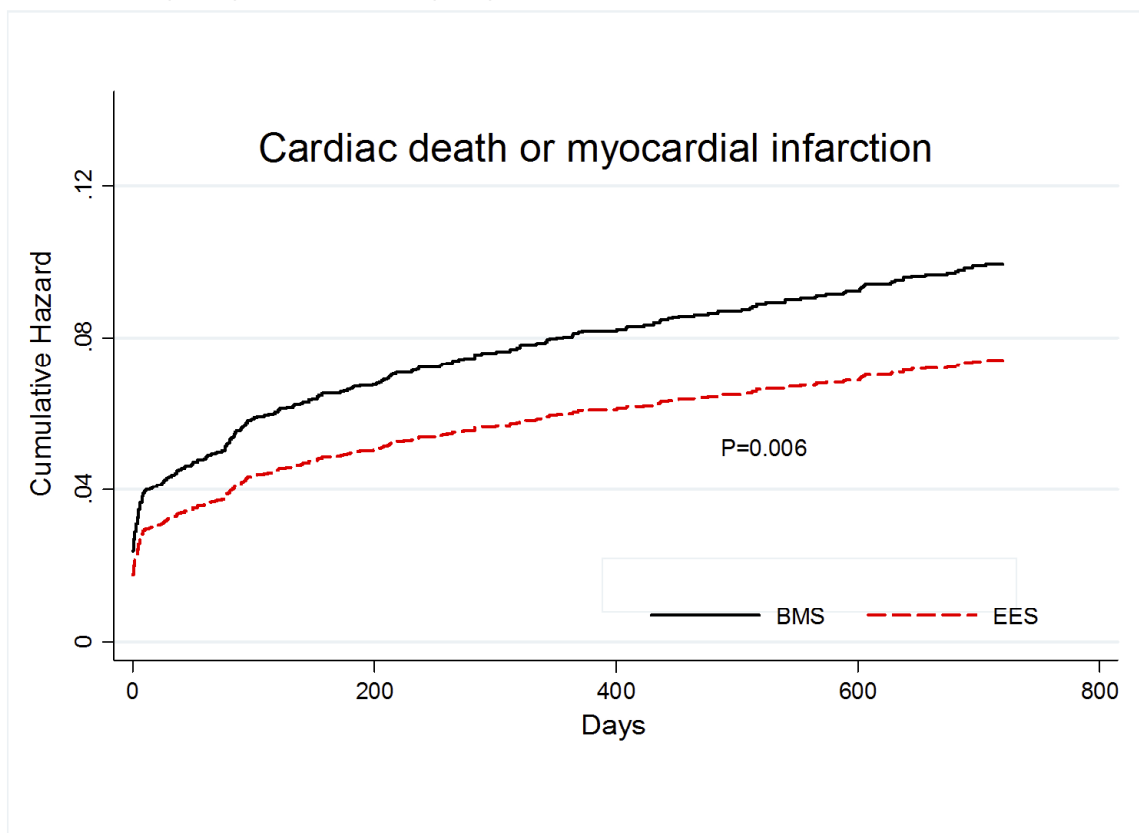
**Fig B:** Cumulative incidence curve for non fatal myocardial infarction and forest plot with point estimates and 95% CI for non fatal myocardial infarction for each included study and pooled estimate from simple Cox regression model stratified by trial with random effects . Abbreviations: Co-Cr EES, cobalt-chromium everolimus eluting; BMS, bare metal stent; HR, hazard ratio; CI, confidence intervals



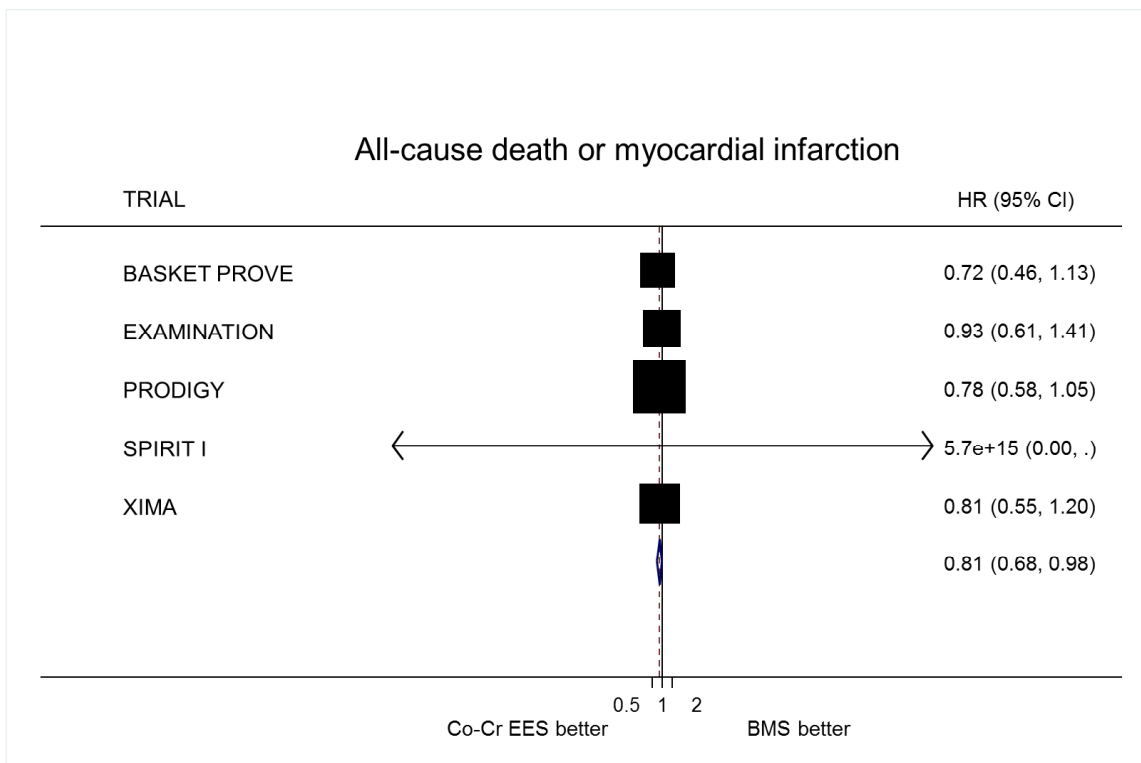
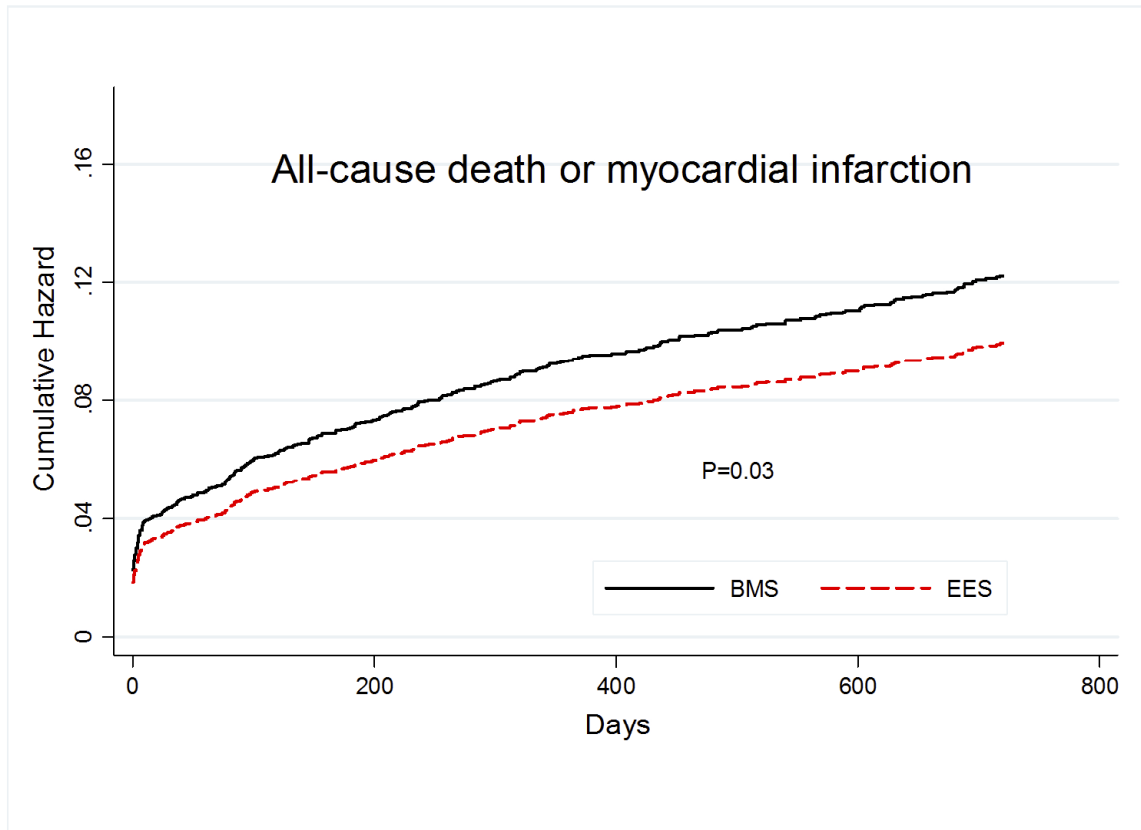
**Fig C:** Cumulative incidence curve for target vessel revascularization or myocardial infarction and forest plot with point estimates and 95% CI for target vessel revascularization or myocardial infarction for each included study and pooled estimate from simple Cox regression model stratified by trial with random effects . Abbreviations: Co-Cr EES, cobalt-chromium everolimus eluting; BMS, bare metal stent; HR, hazard ratio; CI, confidence intervals.



**Fig D:** Cumulative hazard curve for cardiac death or myocardial infarction and forest plot with point estimates and 95% CI for cardiac death or myocardial infarction for each included study and pooled estimate from simple Cox regression model stratified by trial with random effects .  
 Abbreviations: Co-Cr EES, cobalt-chromium everolimus eluting; BMS, bare metal stent; HR, hazard ratio; CI, confidence intervals.



**Fig E** Cumulative hazard curve for all-cause death or myocardial infarction and forest plot with point estimates and 95% CI for all-cause death or myocardial infarction for each included study and pooled estimate from simple Cox regression model stratified by trial with random effects . Abbreviations: Co-Cr EES, cobalt-chromium everolimus eluting; BMS, bare metal stent; HR, hazard ratio; CI, confidence intervals.



**Fig F:** Top: Plot depicting Schoenfeld-like residuals against time with a loess smooth fitted through it for stent type effect for target vessel revascularization. Bottom: Plot depicting Schoenfeld-like residuals against time with a loess smooth fitted through it for stent type effect for the composite of target vessel revascularisation or myocardial infarction.

