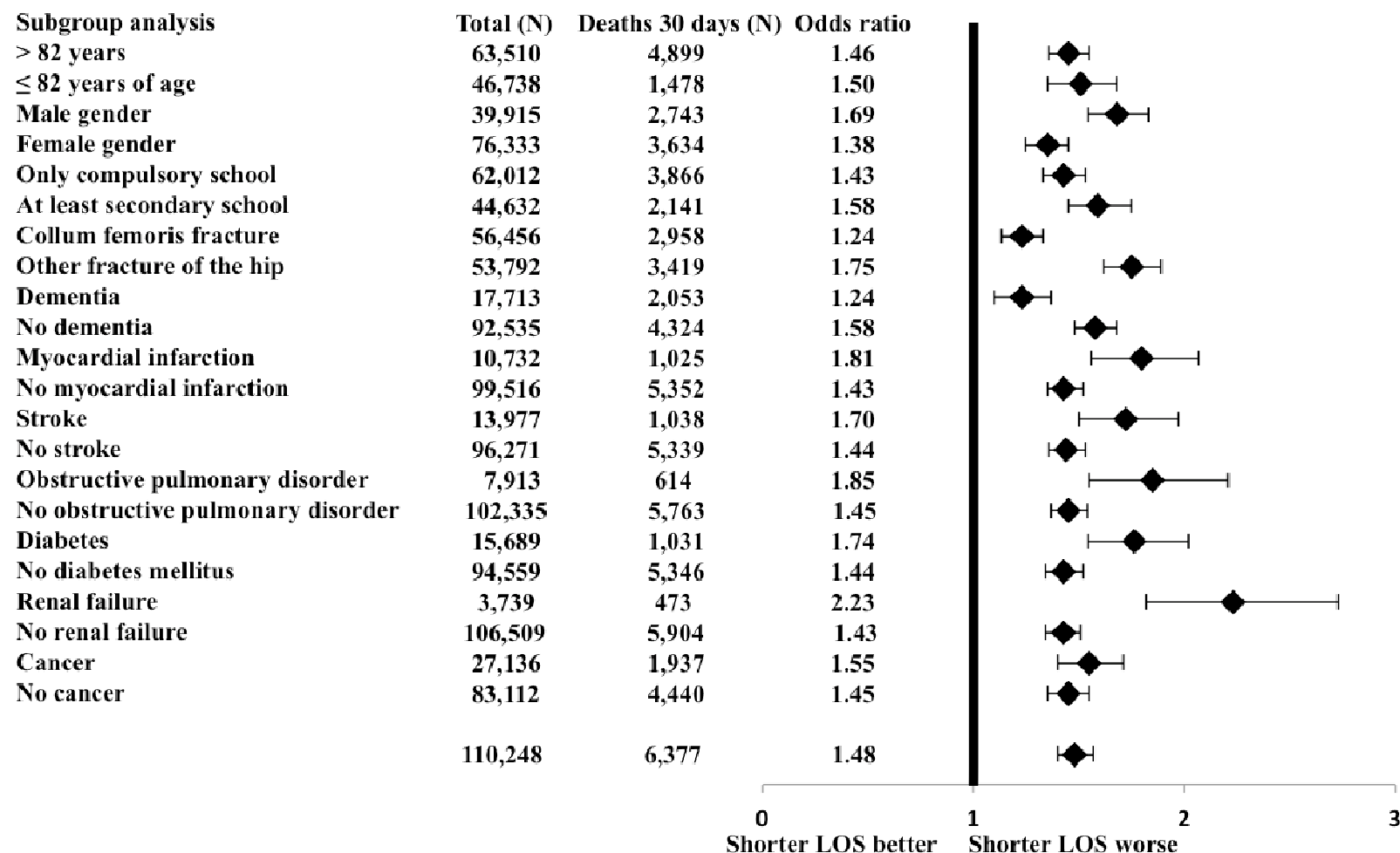
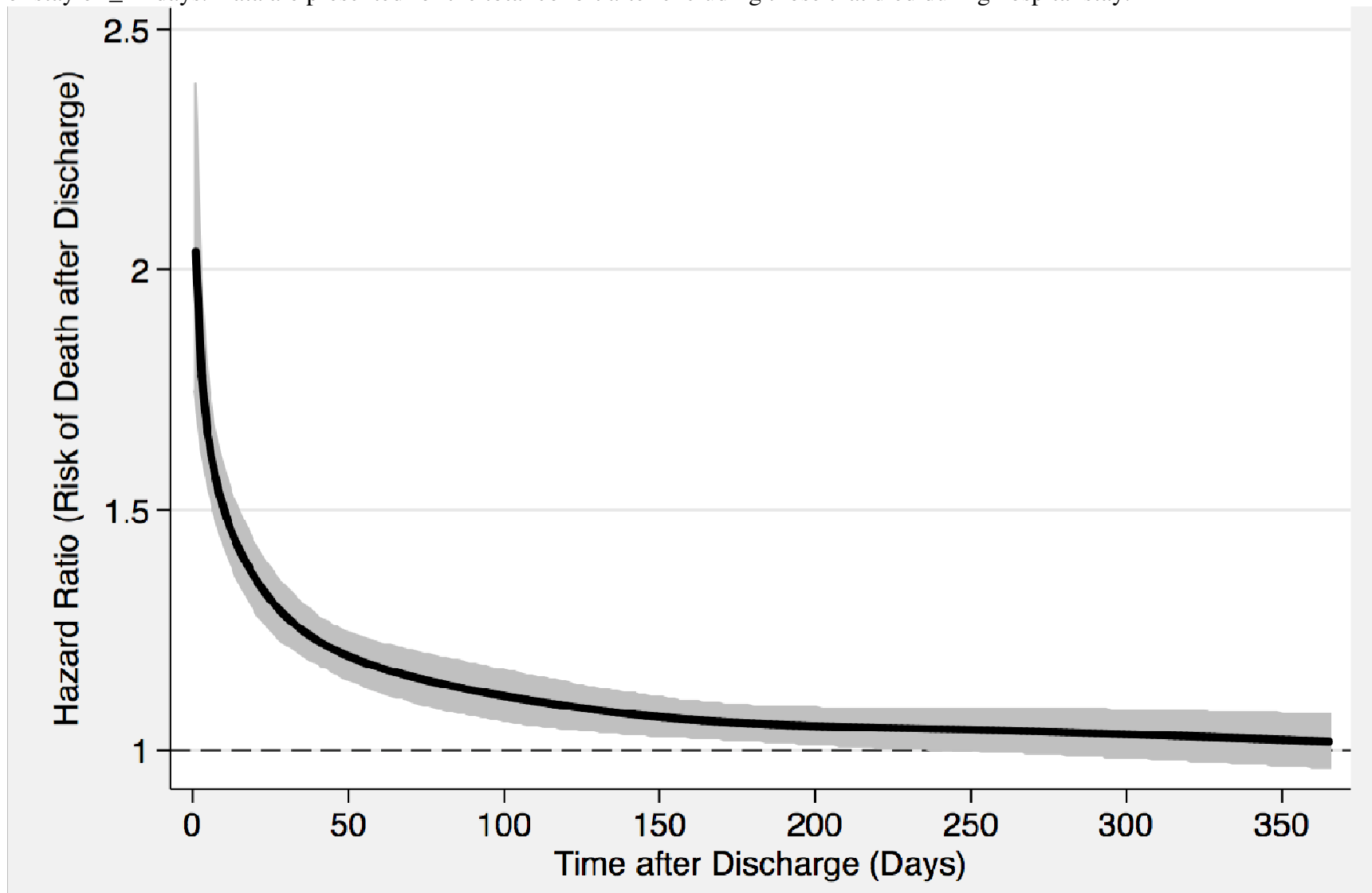


Supplemental fig 1 The risk of death within 30 days of hospital discharge for patients with a length of stay of ≤ 10 days compared to patients with a length of stay of ≥ 11 days. Data are presented for the total cohort and according to subgroups. Odds ratios and 95% confidence intervals are presented. Patients that died during hospital stay were excluded.



Supplemental fig 2 The risk of death after hospital discharge for patients with a length of stay (LOS) of ≤ 10 days compared to patients with a length of stay of ≥ 11 days. Data are presented for the total cohort after excluding those that died during hospital stay.



Supplemental table Risk of death between 11 and 30 days of admission to hospital for patients with a length of stay of ≤ 10 days. Data is presented separately for each year. Individuals who died before 11 days after hospital admission were excluded. Odds ratios (95% CI) are presented per 1-day decrease in length of stay

	Outcome: death within 11 to 30 days of admission						
	2006	2007	2008	2009	2010	2011	2012
Odds ratio (95% CI)	1.037 (0.987 to 1.090)	1.041 (0.993 to 1.091)	1.067 (1.016 to 1.121)	1.085 (1.035 to 1.137)	1.065 (1.015 to 1.118)	1.067 (1.019 to 1.118)	1.116 (1.067 to 1.166)
No of individuals at risk*	8132	7588	7828	7830	7695	7647	7436
No (%) of deaths	334 (4.1)	375 (4.9)	345 (4.4)	374 (4.8)	356 (4.6)	335 (4.4)	380 (5.1)

*Adjusted for all covariates