

## WEB APPENDICIES: SUPPLEMENTAL MATERIAL

### Page

1	<b>Table of Contents</b>
2	<b>Web Appendix Table 1.</b> International Classification of Disease, Ninth Revision, Clinical Modification Codes Used to Define Heart Failure, Acute Myocardial Infarction, and Pneumonia Cohorts
3	<b>Web Appendix Table 2.</b> Age-Sex-Race Standardized Relative Risks of Hospitalization and Death Comparing Study Populations to the Medicare Fee-for-Service Population
4-6	<b>Web Appendix Figure 1.</b> Flow Diagrams Describing Patient Exclusions for Heart Failure, Acute Myocardial Infarction, and Pneumonia Cohorts.
7-8	<b>Web Appendix Figure 2.</b> Risk of First Rehospitalization and Death by Day after Hospitalization for Heart Failure, Acute Myocardial Infarction, or Pneumonia
9-11	<b>Web Appendix Figure 3.</b> Cumulative Incidence Functions for Competing Risk Analysis of First Rehospitalization by Day After Hospitalization for Heart Failure, Acute Myocardial Infarction, or Pneumonia

**Web Appendix Table 1. International Classification of Disease, Ninth Revision, Clinical Modification Codes Used to Define Heart Failure, Acute Myocardial Infarction, and Pneumonia Cohorts**

<b>Cohort Name</b>	<b>Constituent ICD-9-CM Codes</b>
<b>Heart failure</b>	402.01, 402.11, 402.91, 404.01, 404.03, 404.11, 404.13, 404.91, 404.93, 428.xx
<b>Acute myocardial infarction</b>	410.xx excluding those with 410.x2 (acute myocardial infarction, subsequent episode of care)
<b>Pneumonia</b>	480.x, 481, 482.xx, 483.x, 485, 486, 487.0, and 488.11

---

ICD-9-CM: International Classification of Diseases, Ninth Revision, Clinical Modification

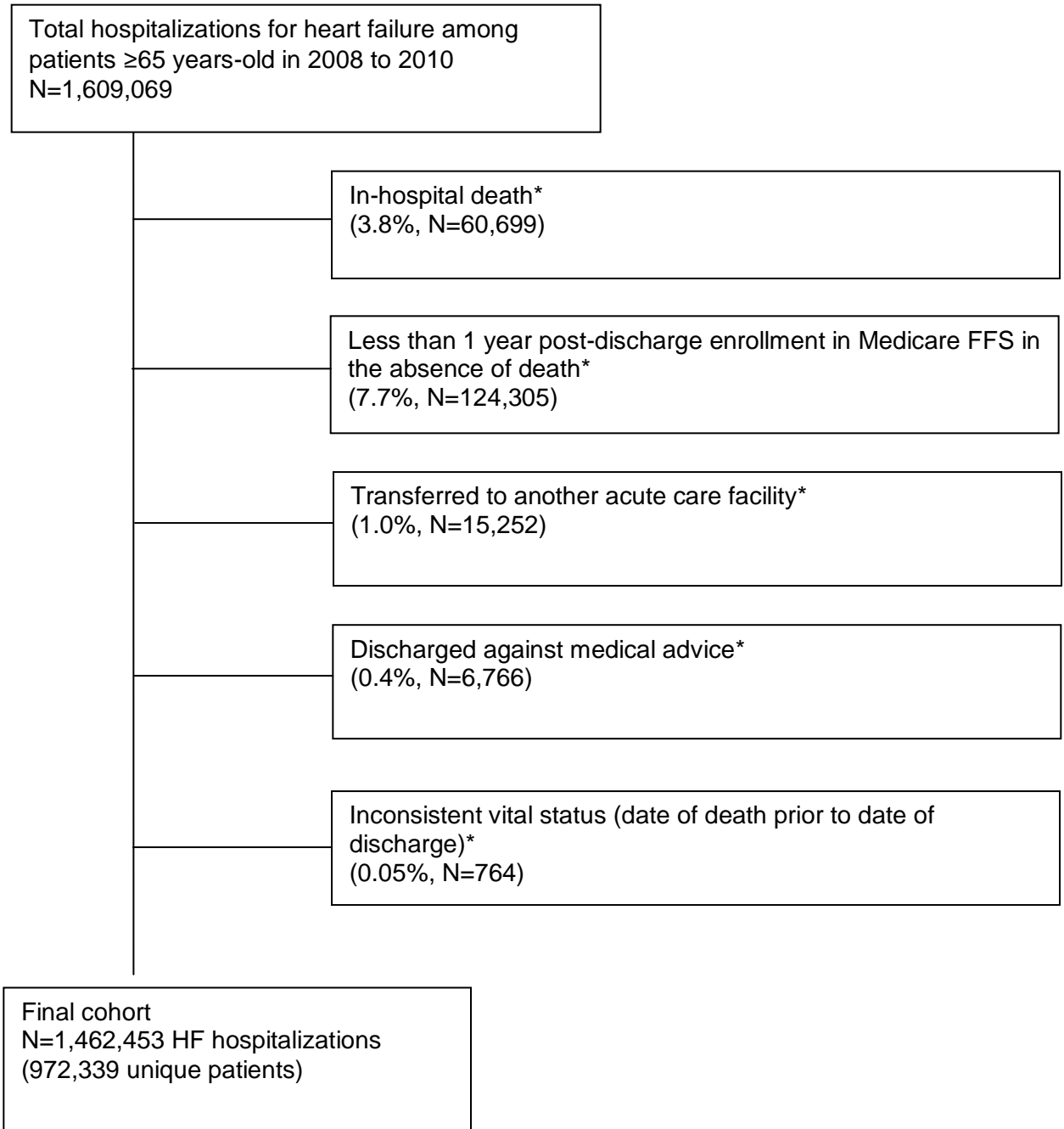
**Web Appendix Table 2. Age-Sex-Race Standardized Relative Risks of Hospitalization and Death Comparing Study Populations to the Medicare Fee-for-Service Population**

Discharge Diagnosis	Outcome	Age-Sex-Race Standardized Cumulative Incidence Ratio by Day After Discharge (95% CI)				
		30	60	90	180	365
<b>Heart Failure</b>	<b>Hospitalization</b>	15.8 (15.7-15.9)	11.6 (11.6-11.7)	8.5 (8.4-8.5)	6.0 (6.0-6.0)	3.5 (3.5-3.5)
	<b>Death</b>	17.8 (17.7-18.0)	14.2 (14.1-14.3)	11.0 (11.0-11.1)	8.9 (8.8-8.9)	6.3 (6.3-6.3)
<b>Acute Myocardial Infarction</b>	<b>Hospitalization</b>	11.8 (11.7-11.8)	8.2 (8.1-8.2)	6.4 (6.4-6.5)	4.2 (4.2-4.2)	2.6(2.5-2.6)
	<b>Death</b>	15.9 (15.8-16.1)	11.4 (11.3-11.5)	8.4 (8.4-8.5)	6.4 (6.4-6.4)	4.3 (4.3-4.4)
<b>Pneumonia</b>	<b>Hospitalization</b>	11.5 (11.4-11.5)	8.4 (8.4-8.4)	6.2 (6.2-6.2)	4.6 (4.6-4.6)	2.9 (2.9-2.9)
	<b>Death</b>	18.0 (17.9-18.2)	13.8 (13.7-13.9)	10.4 (10.3-10.4)	8.1 (8.0-8.1)	5.6 (5.6-5.6)

CI: confidence interval

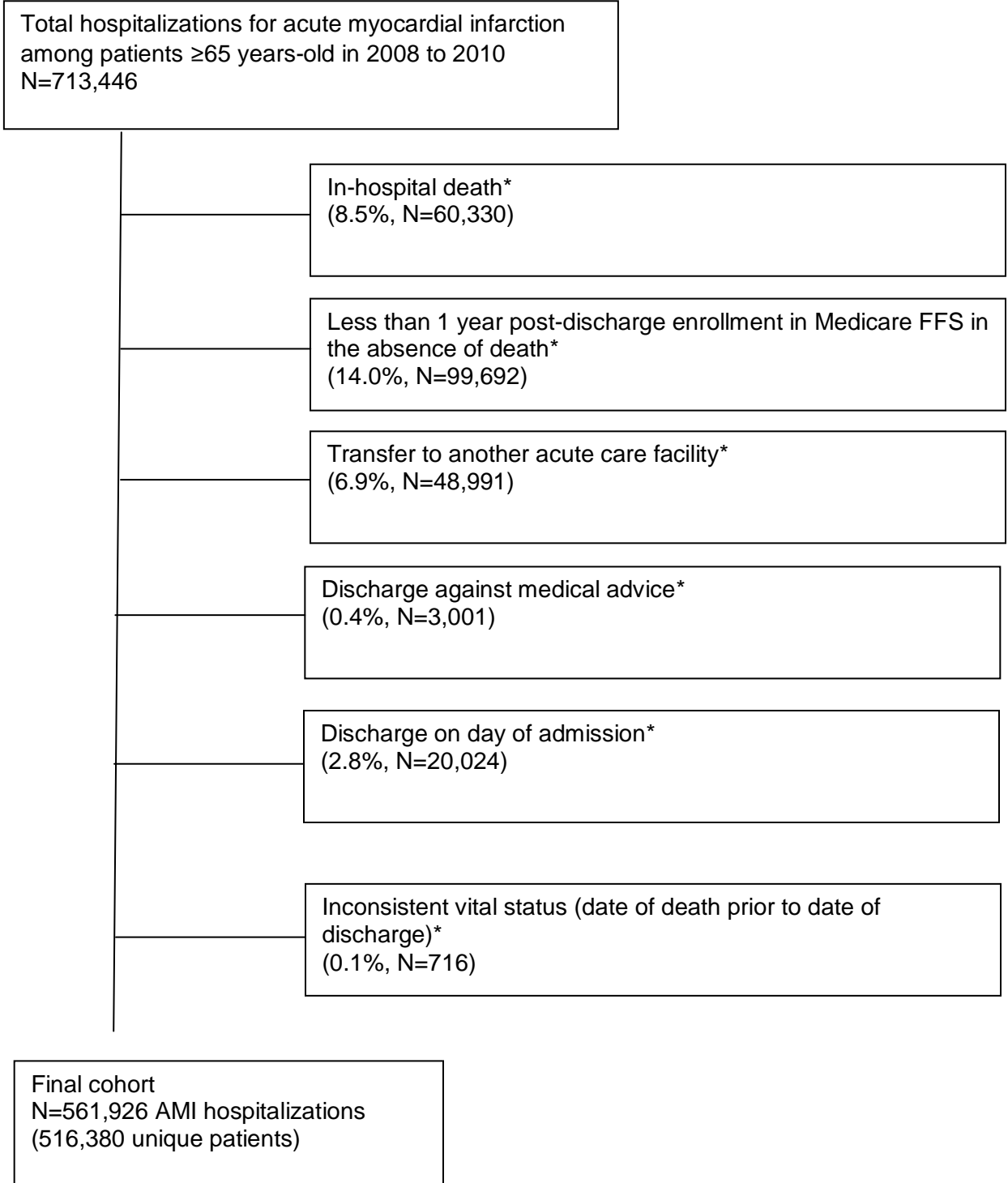
**Web Appendix Figure 1: Flow Diagrams Describing Patient Exclusions for Heart Failure, Acute Myocardial Infarction, and Pneumonia Cohorts.**

**1) Heart Failure**



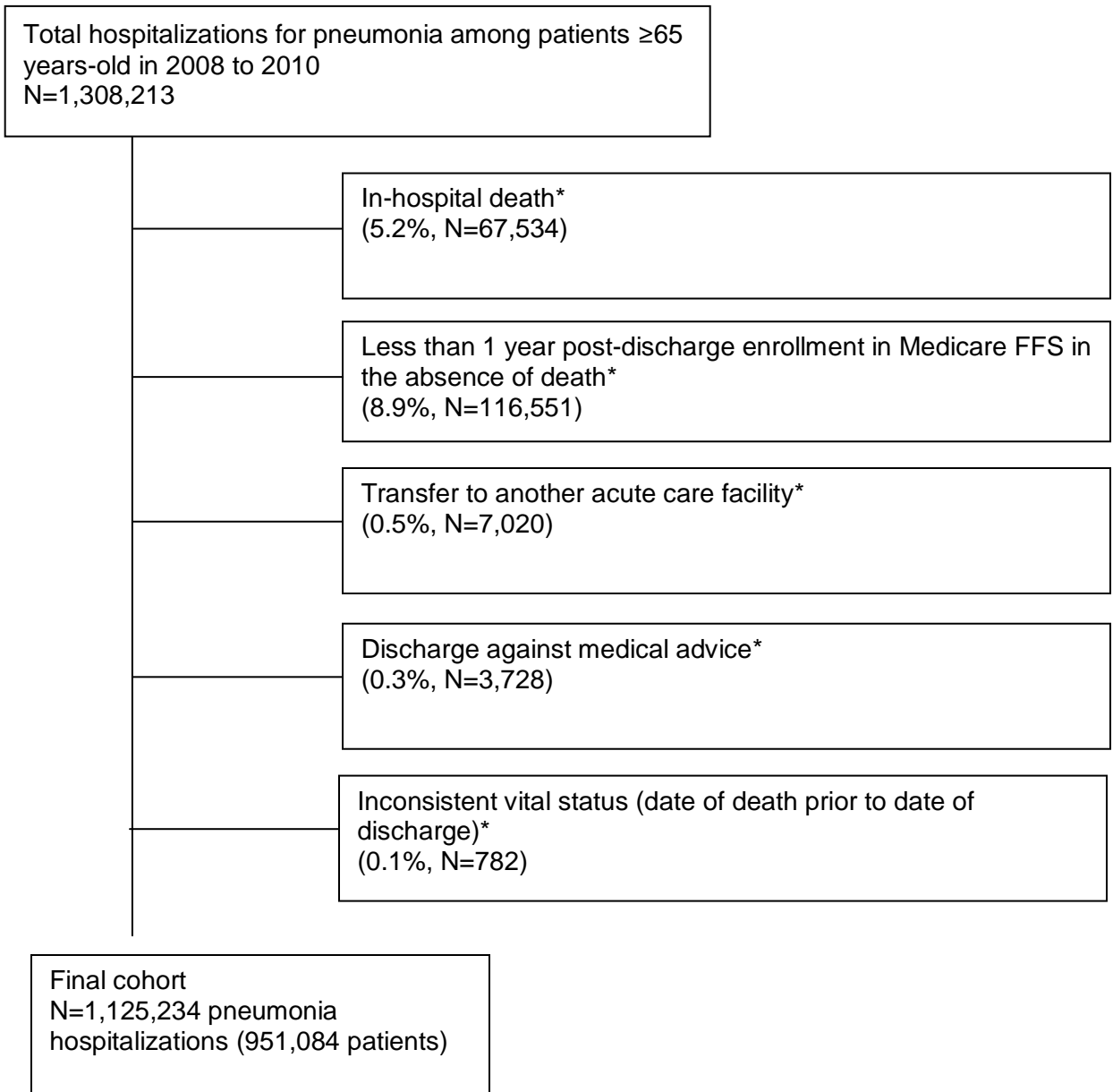
\*Categories are not mutually exclusive

## 2) Acute Myocardial Infarction



\*Categories are not mutually exclusive

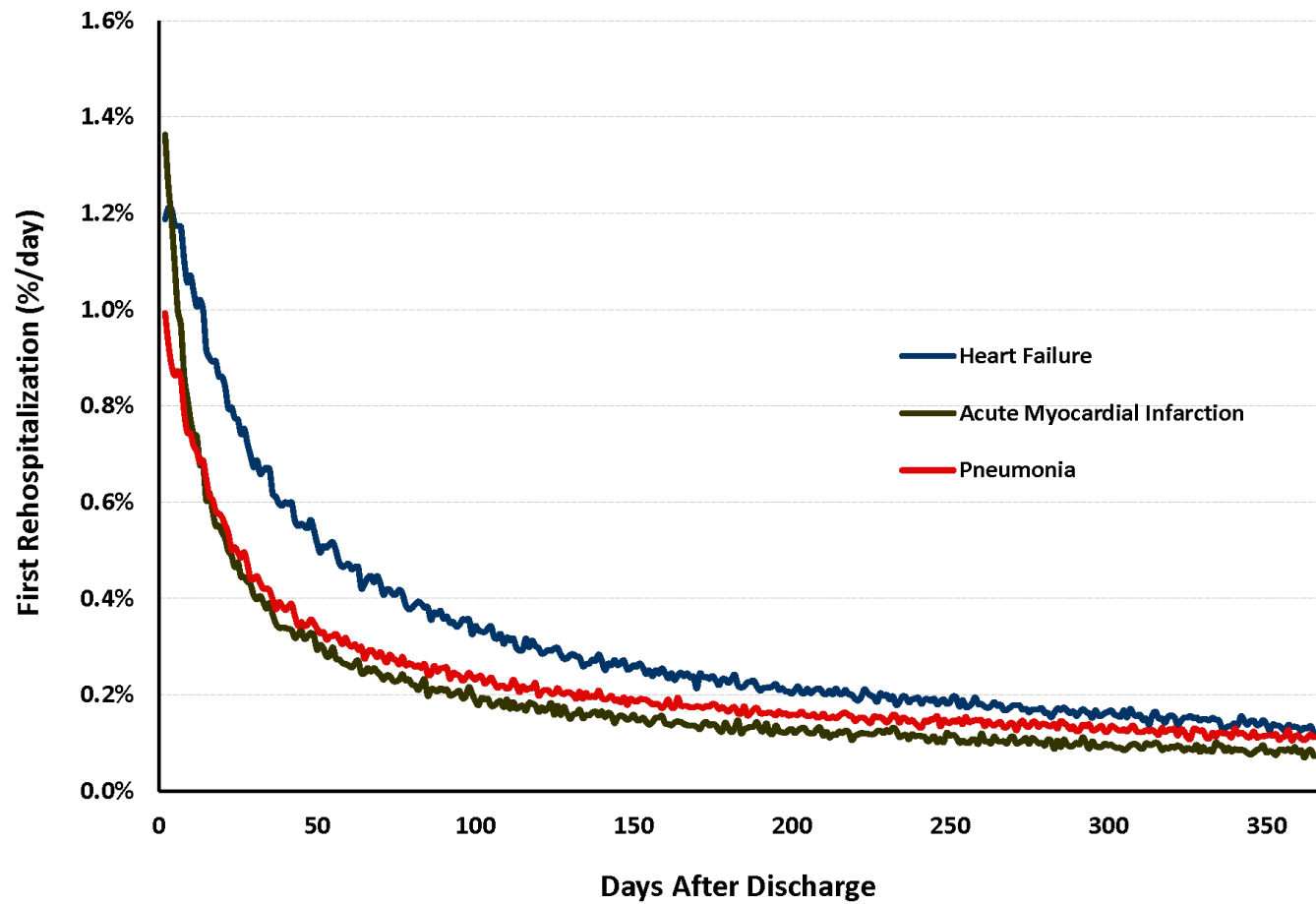
### 3) Pneumonia



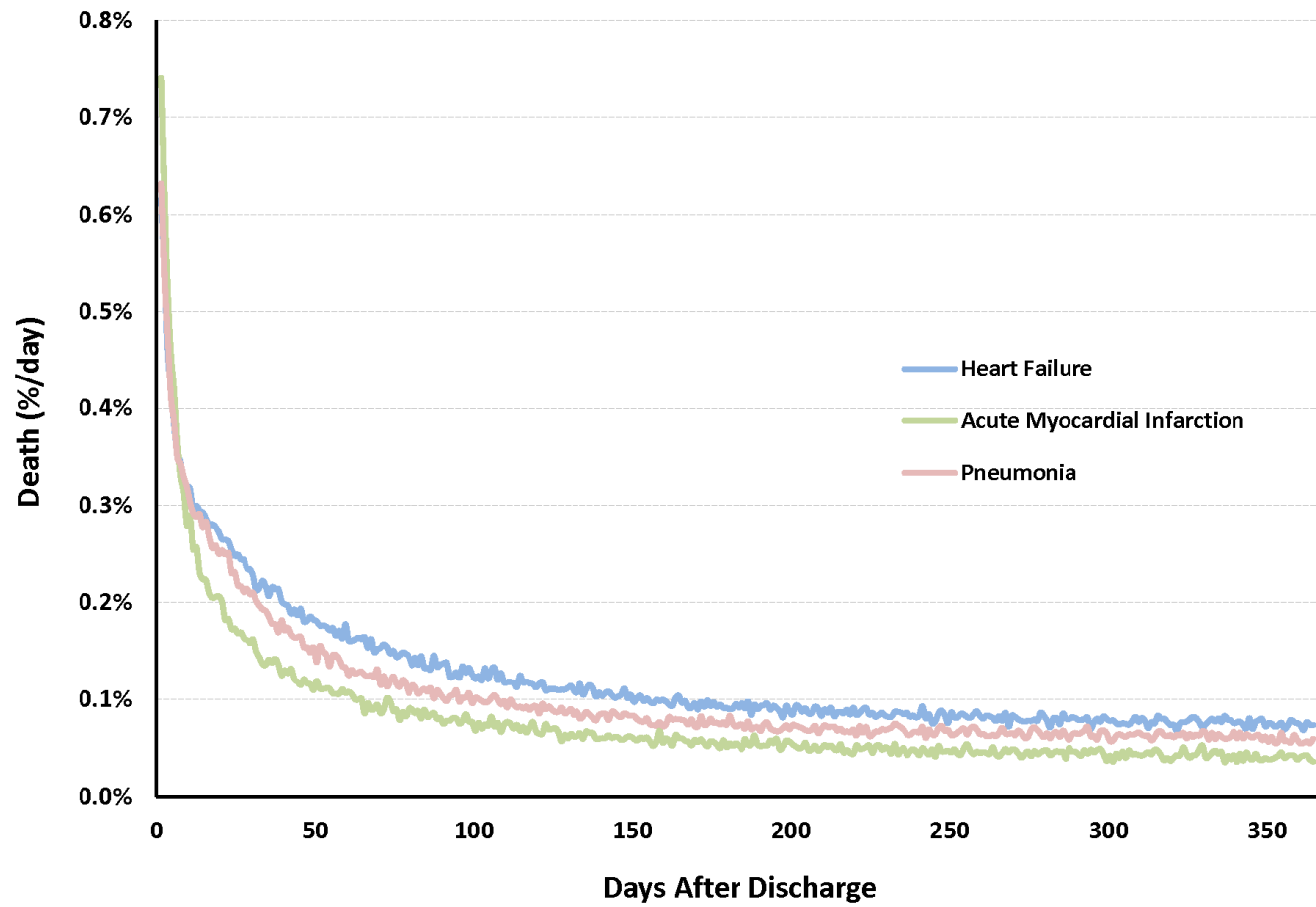
\*Categories are not mutually exclusive

Web Appendix Figure 2. Risk of First Rehospitalization and Death by Day after Hospitalization for Heart Failure, Acute Myocardial Infarction, or Pneumonia

A. First Rehospitalization



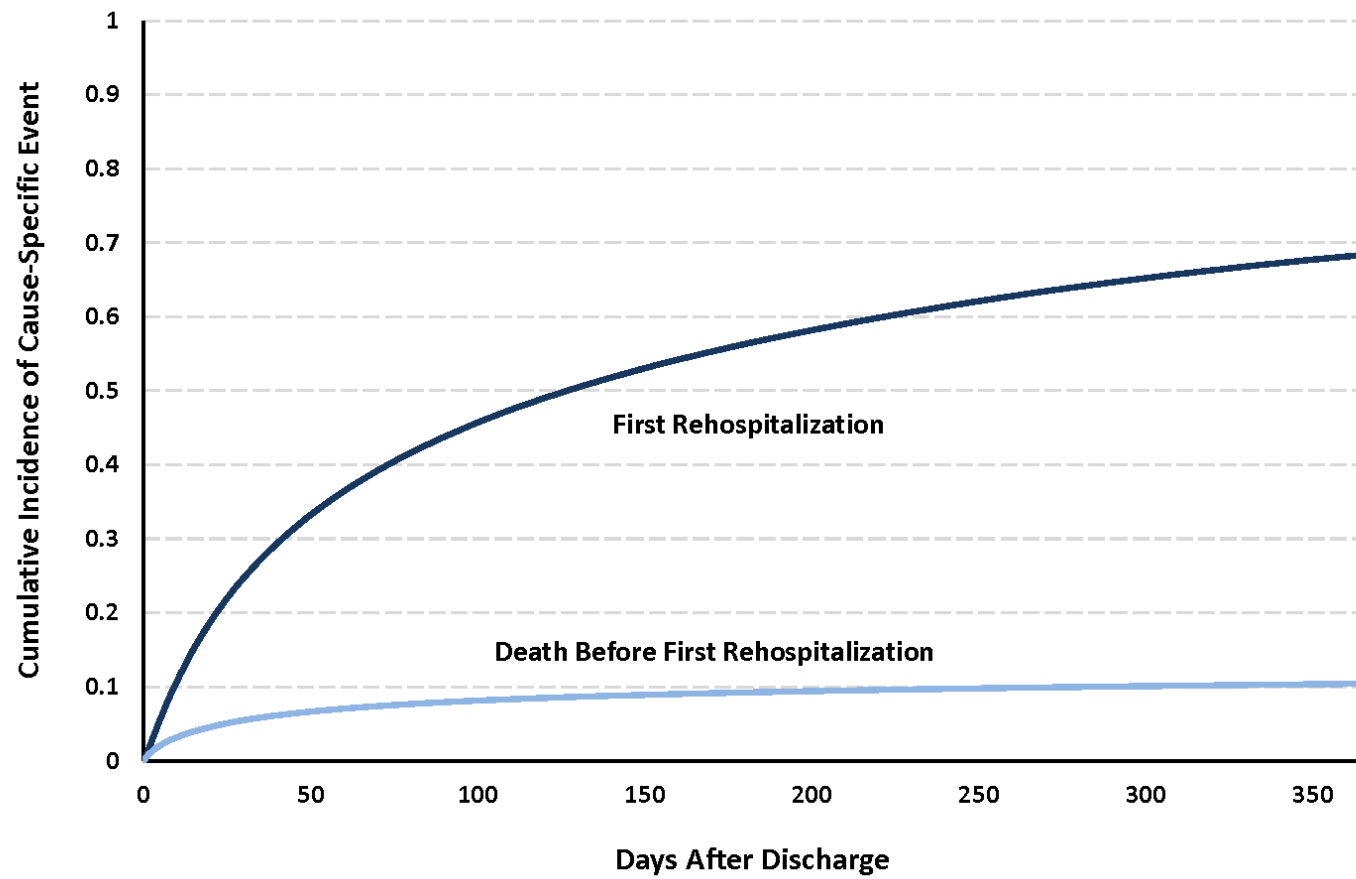
## B. Death



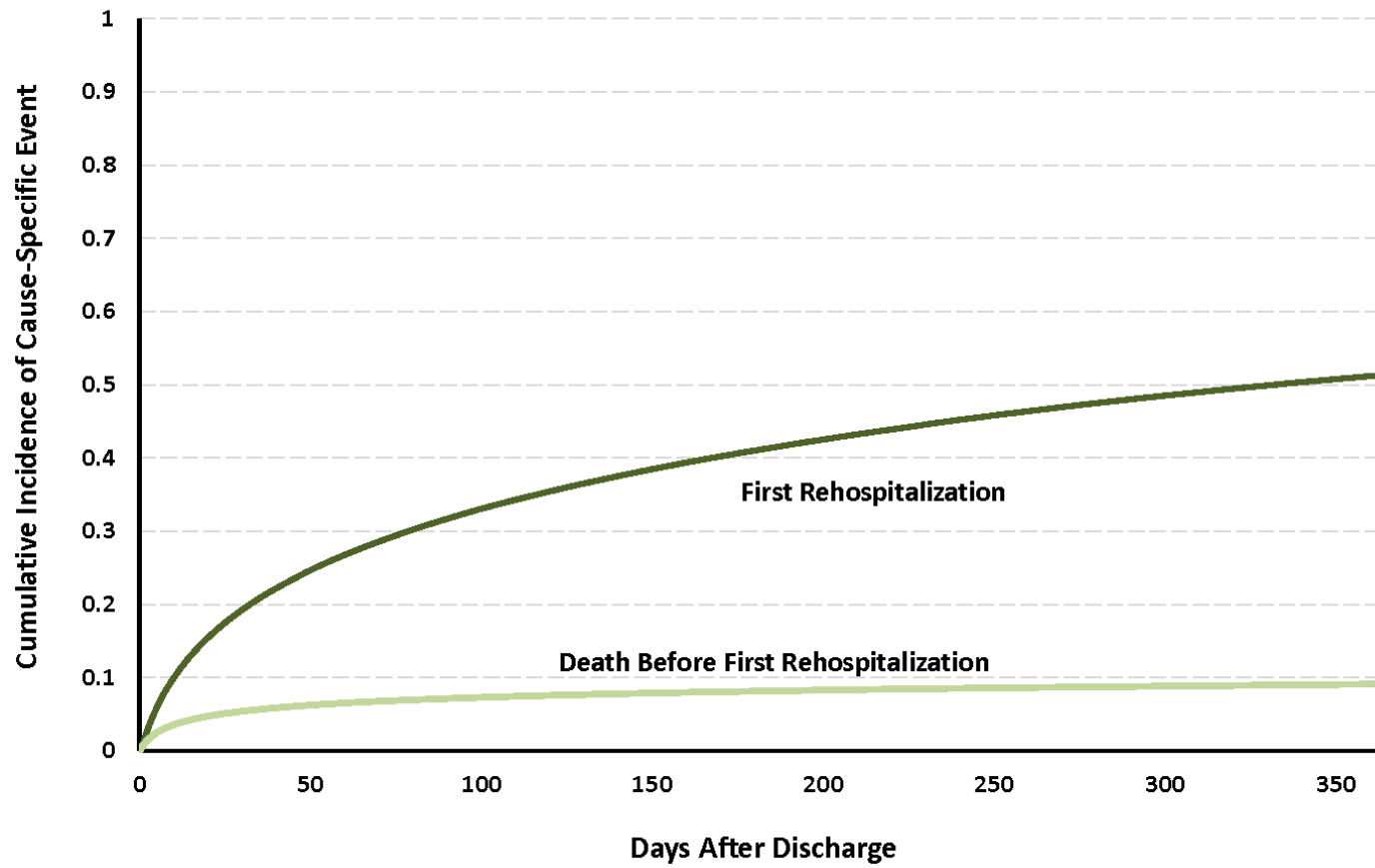


**Web Appendix Figure 3. Cumulative Incidence Functions for Competing Risk Analysis of First Rehospitalization by Day After Hospitalization for Heart Failure, Acute Myocardial Infarction, or Pneumonia**

**A. Heart Failure**



## B. Acute Myocardial Infarction



### C. Pneumonia

