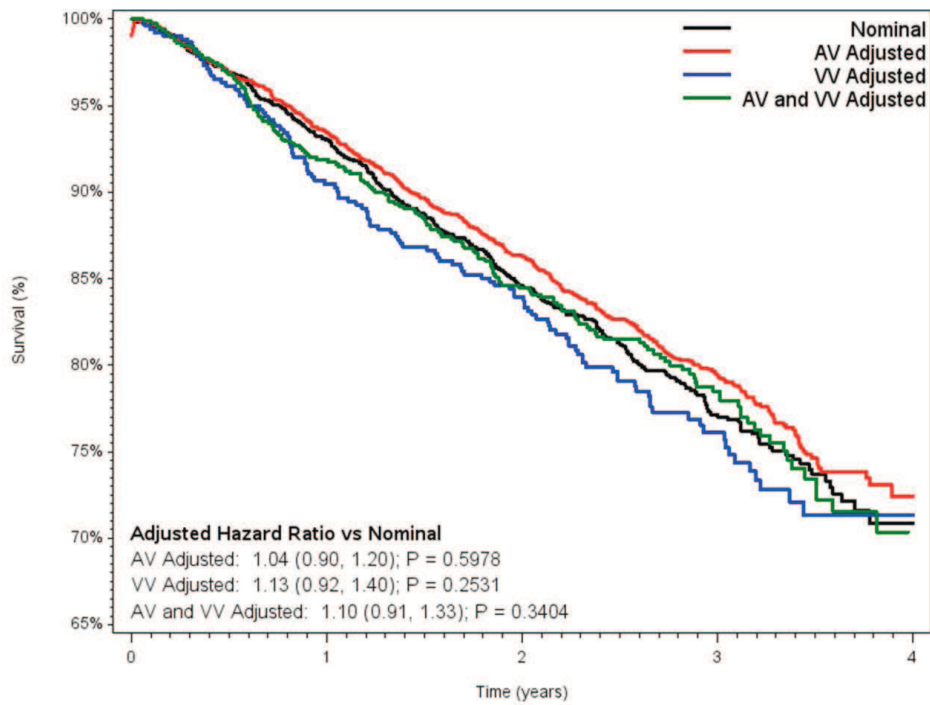


**Figure S3. Unadjusted Kaplan-Meier survival curves, stratified by baseline programming (using paced AV delay). Hazard ratios adjusted for age, gender, DFT at implant, number of treatment zones, brady programming of DDD, LRL, VF detection rate, AF burden, LV pacing, and shock therapy.**



AV: atrioventricular timing; VV: ventricular-to-ventricular timing; DFT: defibrillation threshold; LRL: lower rate limit; VF: ventricular fibrillation; AF: atrial fibrillation; LV: left-ventricular.