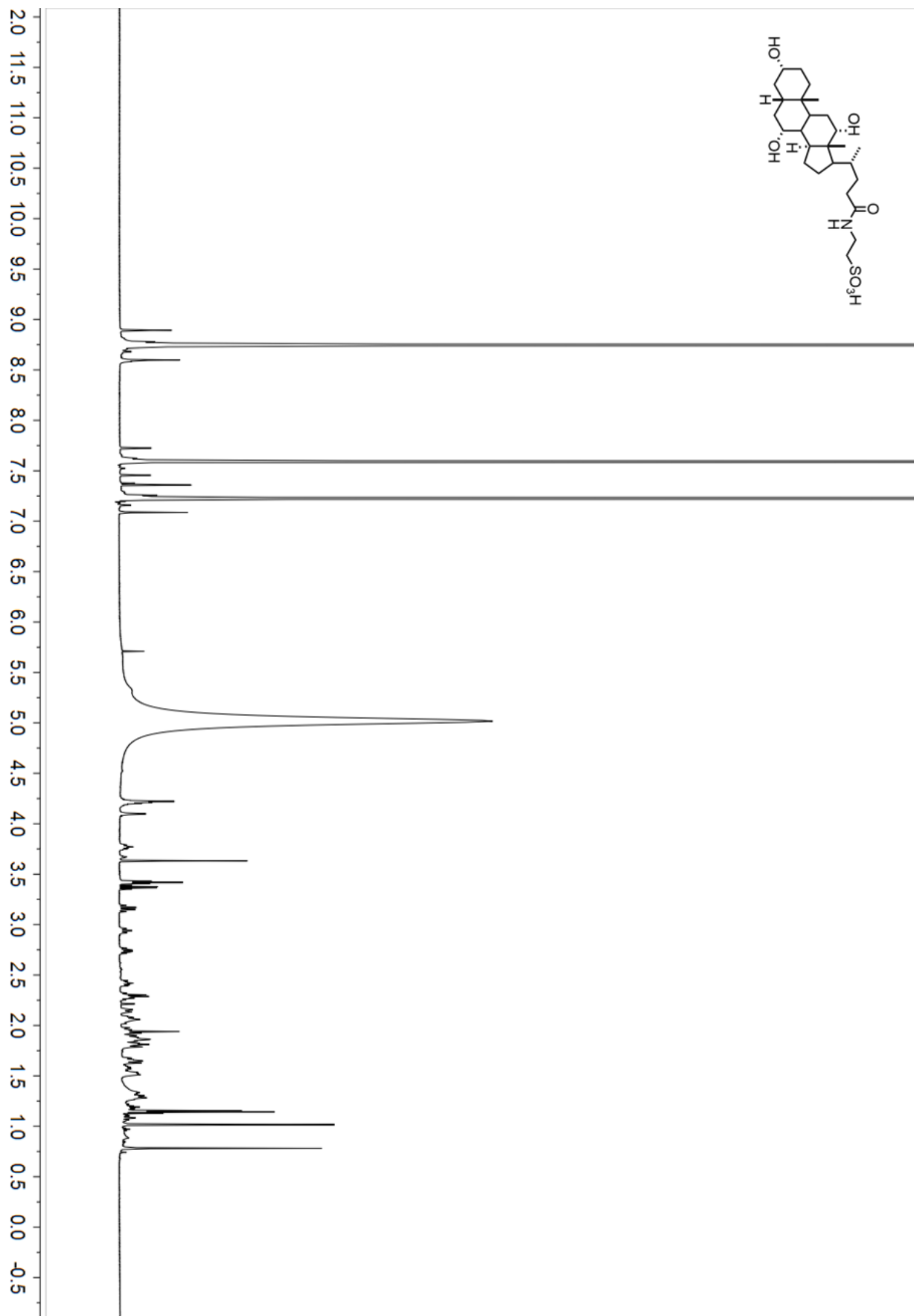
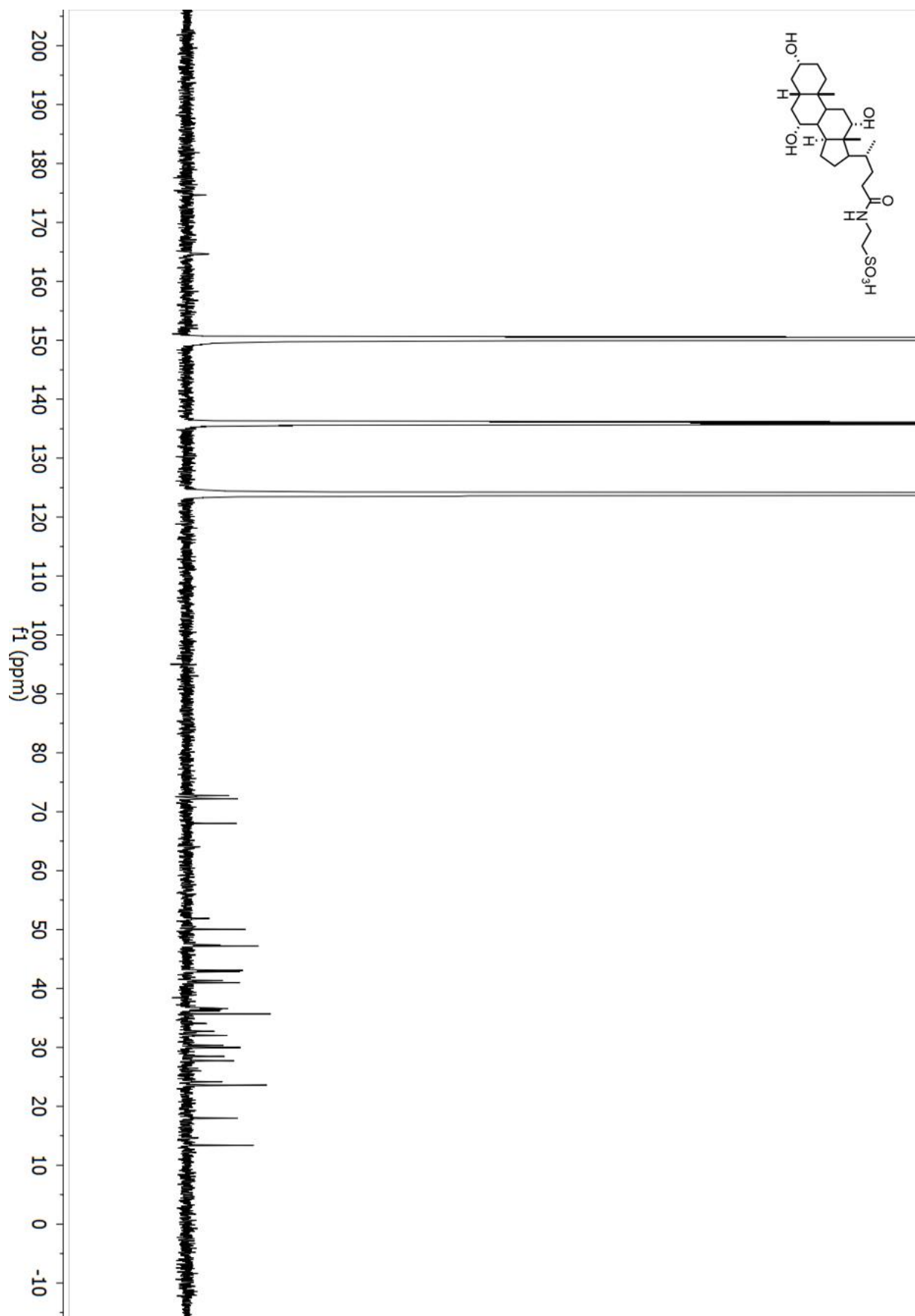


Figure S1. NMR Spectra for Isolated and Commercial Samples of Taurocholic Acid (**1**), pyridine-d₅, 600 MHz.

¹H NMR spectra of TCA (**1**) isolated from extract *R. erythropolis* FI1021DH2S2



¹³C NMR spectra of TCA (1) isolated from extract *R. erythropolis* FI1021DH2S2



¹³C NMR spectra of commercially purchased TCA (1)

