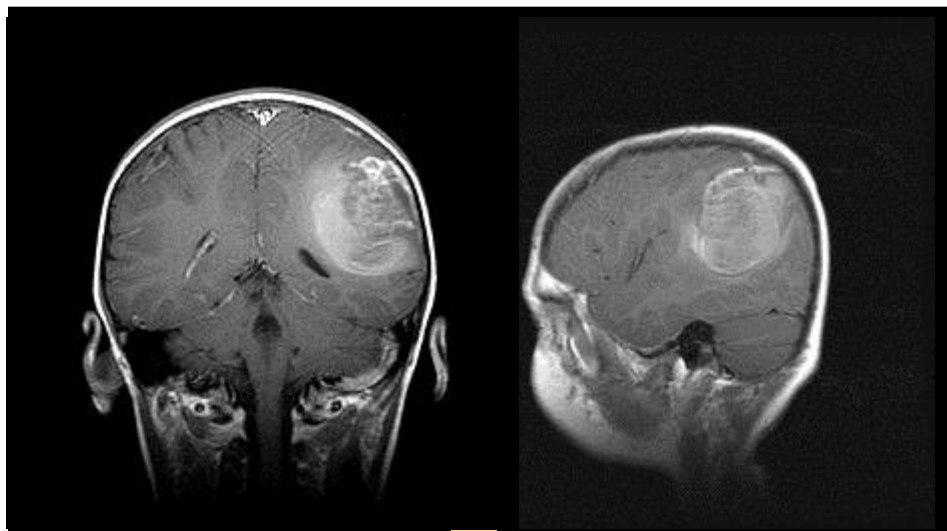
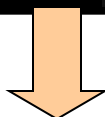


Patient #1:

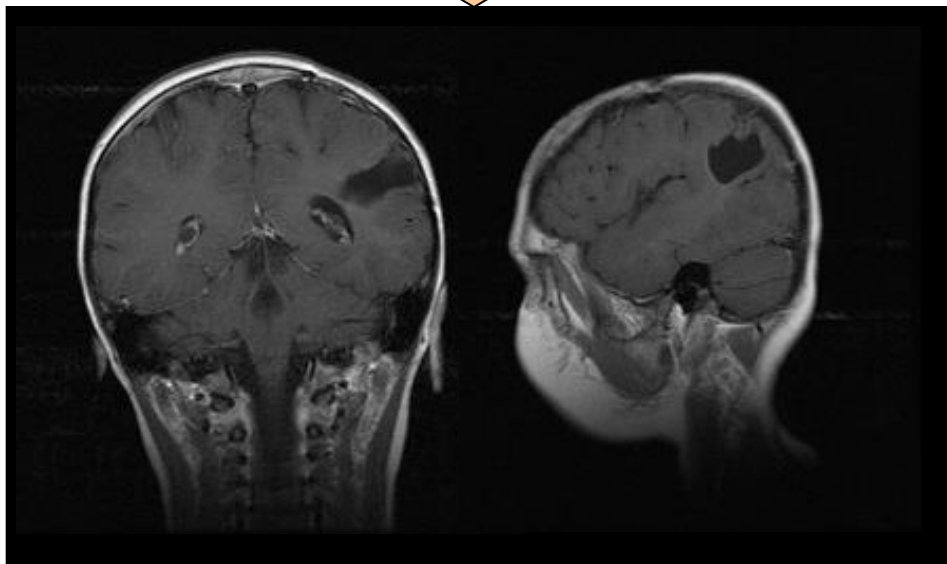
Supplementary Figure S1



Salvage

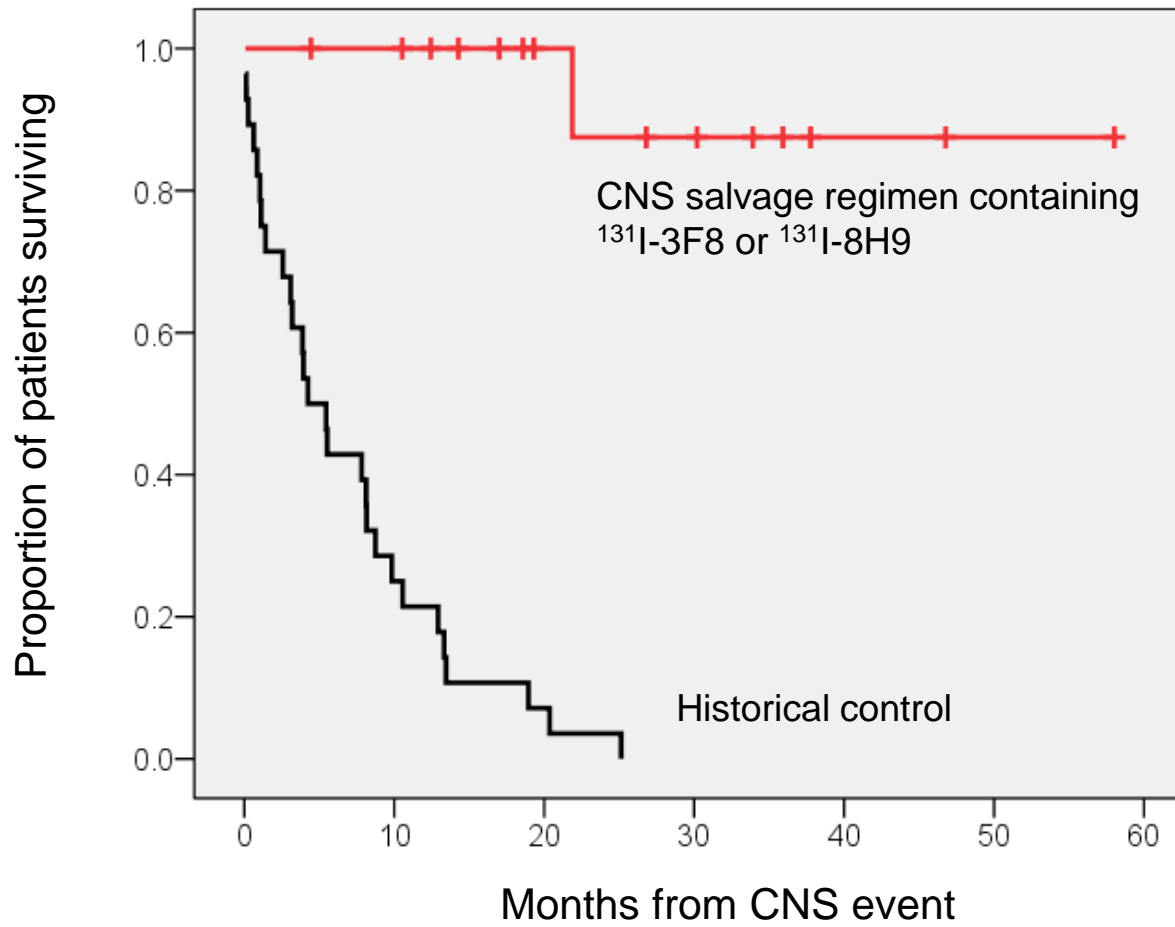


Regimen



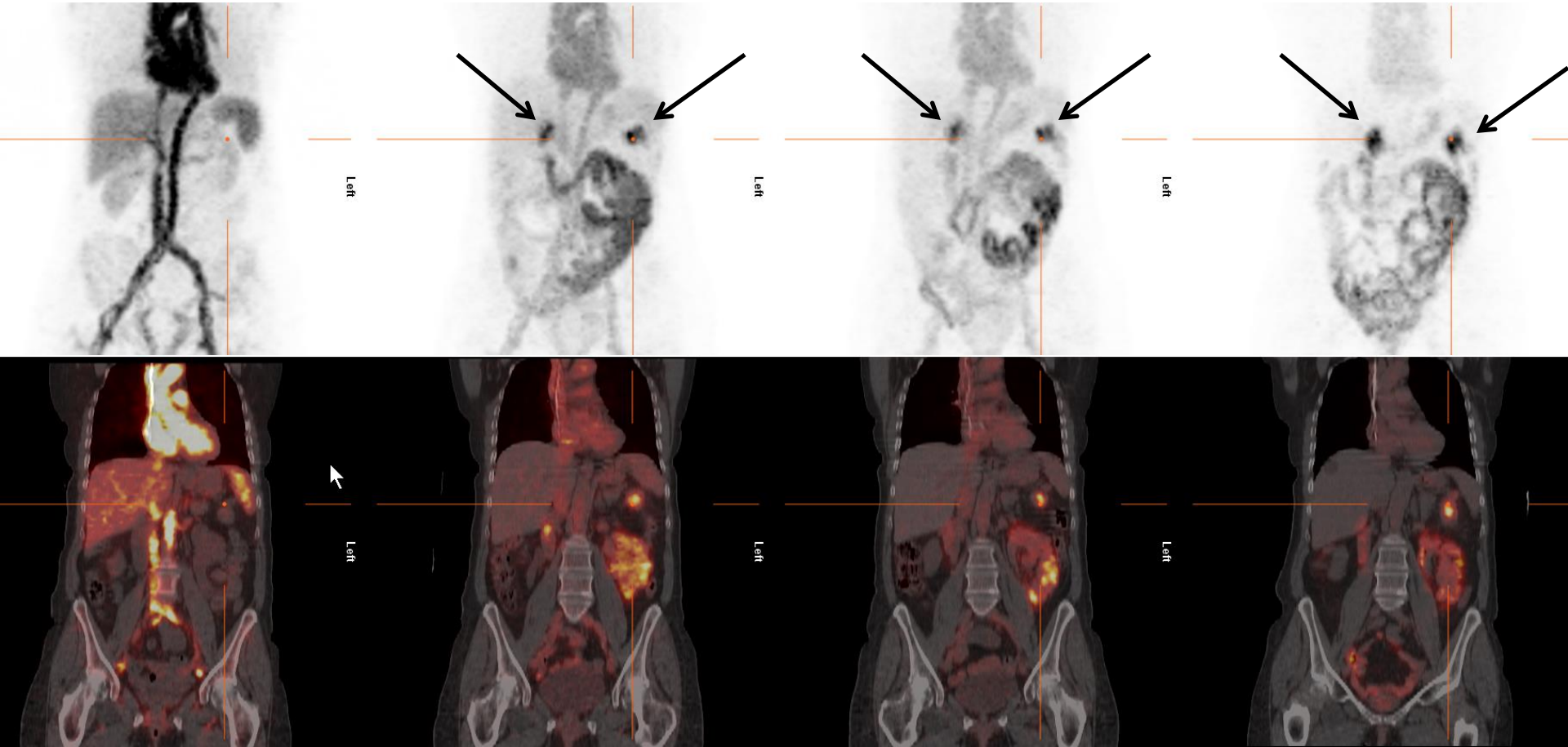
PFS at 5 yrs

Recurrent neuroblastoma metastatic to the CNS

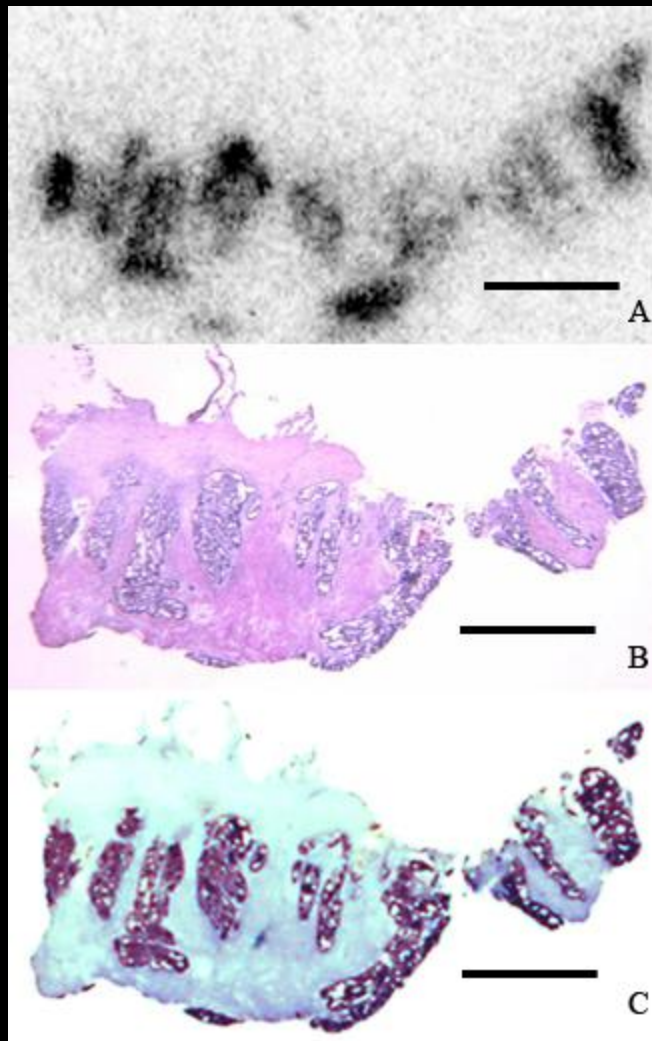


Supplementary Figure S3A

124I-A33 in colorectal Ca



Histologic Examination of Tumor



Quantitative
Autoradiography (QAR)*

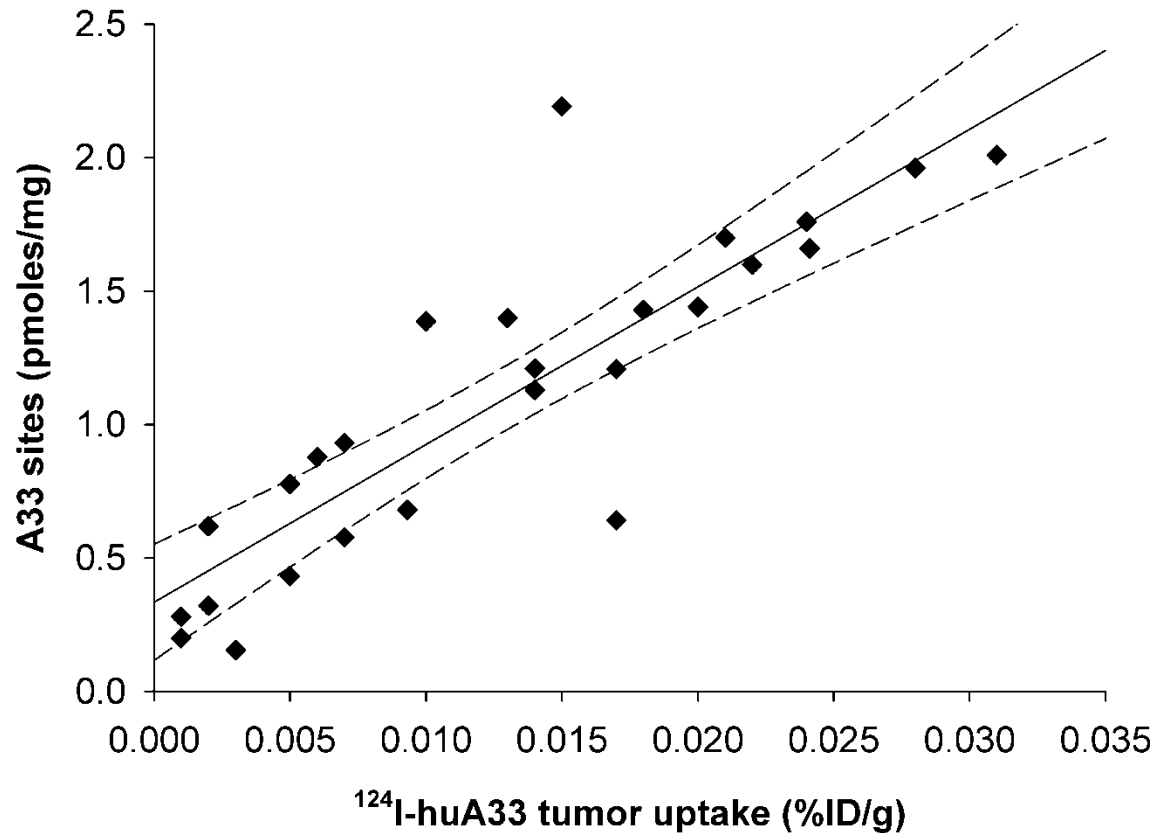
*viable tumor (0.051%ID/g) >
section average (0.017%ID/g)
factor of 3.

Hematoxylin and Eosin

A33 Immunohistology

**Previously published in O'Donoghue, J.A. et al. 124I-huA33 antibody uptake is driven by A33 antigen concentration in tissues from colorectal cancer patients imaged by immuno-PET. J Nucl Med 52, 1878-85 (2011).*

[A33] vs Uptake in Tumor



*Modified from a figure published in O'Donoghue, J.A. et al. ^{124}I -huA33 antibody uptake is driven by A33 antigen concentration in tissues from colorectal cancer patients imaged by immuno-PET. *J Nucl Med* **52**, 1878-85 (2011).