

Fig.S1

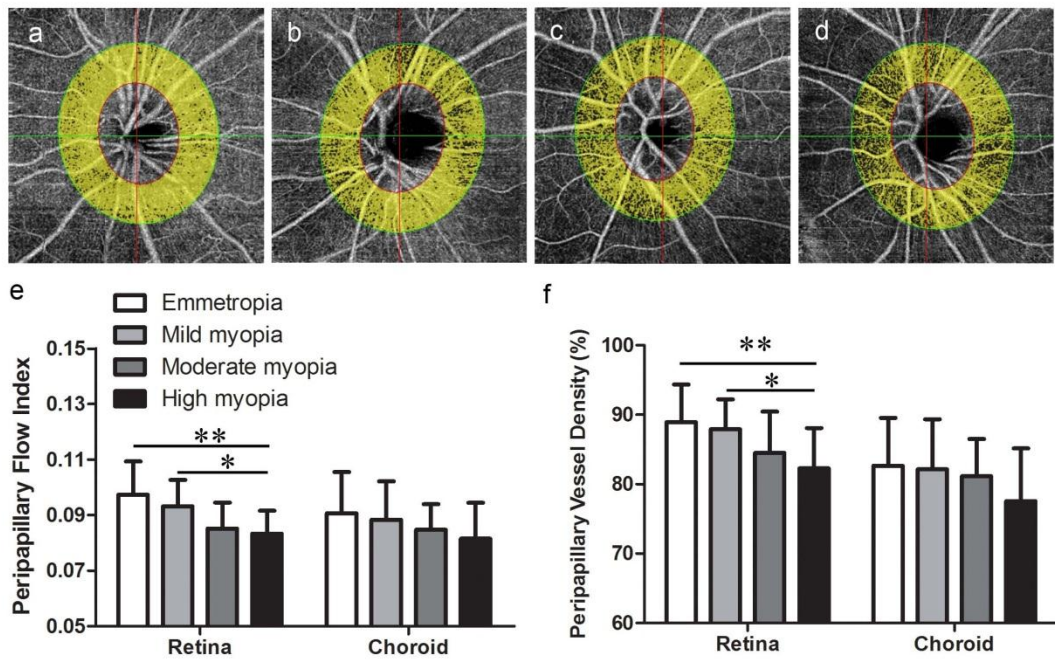


Fig S1. Peripapillary perfusion was compared among the four groups.

(a-d) the peripapillary flow index and vessel density were shown in emmetropia (a), mild myopia (b), moderate myopia (c) and high myopia (d). (e) The highly myopic eyes had a lower peripapillary retinal flow index ($p=0.002$) than the emmetropic eyes. (f) The highly myopic eyes had lower retinal vessel density ($p=0.006$) than the emmetropic eyes. ** $p<0.01$, * $p<0.05$