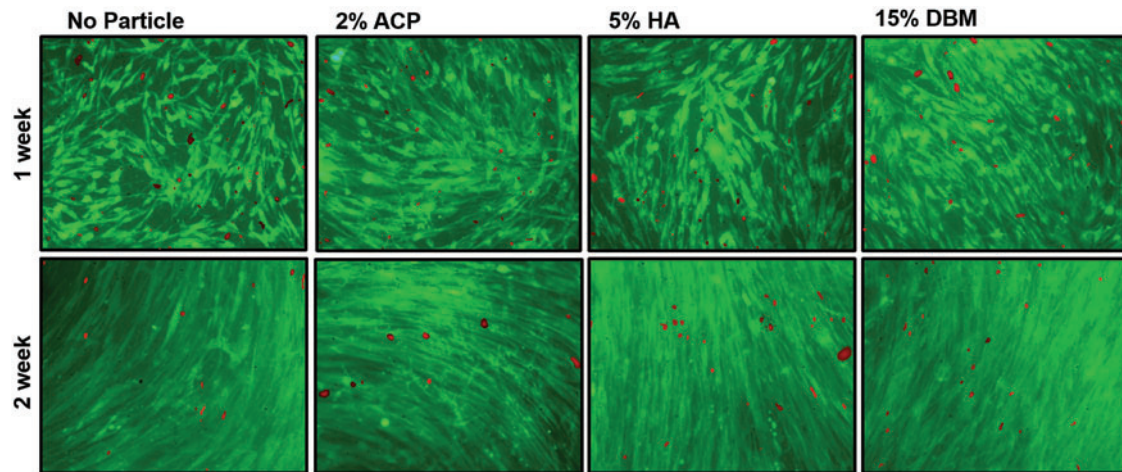


Supplementary Data



SUPPLEMENTARY FIG. S1. Representative images of hMSCs seeded on polyHIPES fabricated with no particle, 2 wt% ACP, 5 wt% HA, and 15 wt% DBM at 1 and 2 weeks. Live cells are stained green with calcein and dead cells are stained red with ethidium homodimer-1.