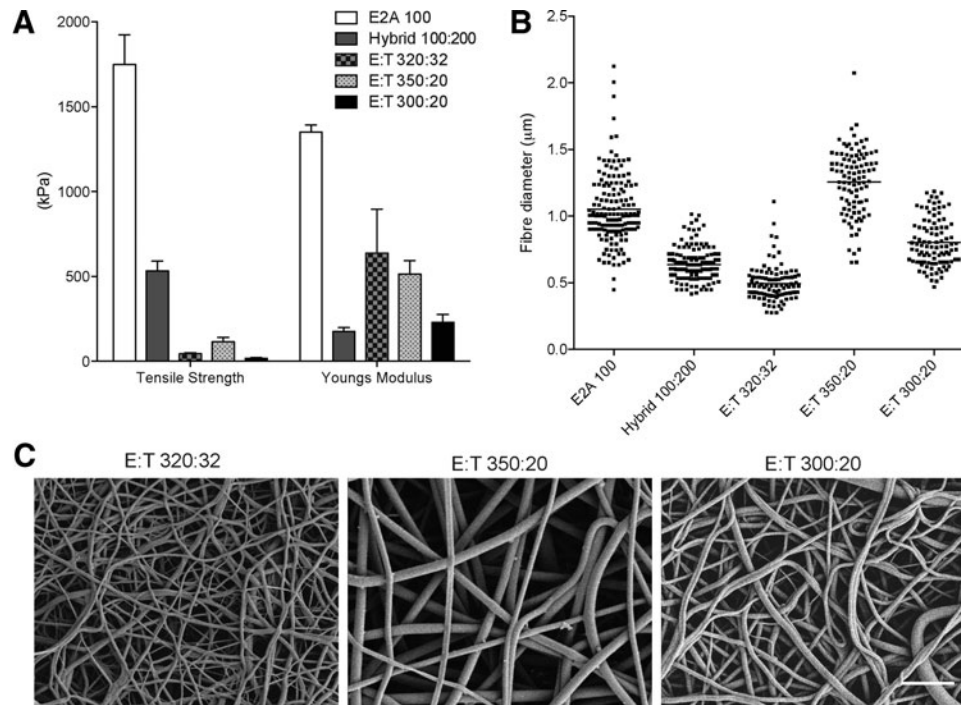


## Supplementary Data



**SUPPLEMENTARY FIG. S1.** (A) Ultimate tensile strength and Young's modulus calculations demonstrate that hybrid constructs derived from high ratios of E2A:tropoelastin had reduced tensile strength, but higher stiffness relative to hybrids with a 1:2 ratio. (B) Average fiber diameter was greatly influenced by relatively small changes in the blending ratio and total solution concentration, demonstrated in (C) representative SEM images. Scale bar = 10 µm.