

493

494

495 Supplemental Table 1: Adjuvant Therapy Based on Nodal Status

496

	pN0 (N=33; 33%)	pN1 (N=6; 6.0%)	pN2 (N=61; 61%)	p
Adjuvant Therapy				
None	22 (67%)	0 (0%)	17 (28%)	<0.0001
PORT only	2 (6.1%)	5 (83%)	30 (49%)	
Adjuvant Chemotherapy only	8 (24%)	1 (17%)	7 (11%)	
PORT + Adjuvant Chemotherapy	1 (3.0%)	0 (0%)	7 (11%)	

497

	pN0 (N=33; 33%)	pN1 (N=6; 6.0%)	pN2 (N=61; 61%)	p
Any Adjuvant Therapy				
No	22 (67%)	0 (0%)	17 (28%)	<0.0001
Yes	11 (33%)	6 (100%)	44 (72%)	

498

499

500

501 PORT = post-operative radiation therapy.

502

503

504 Supplemental Table 2: Results of Post-Induction N2-Avidity in Detecting Pathological  
505 Mediastinal (N2-Persistent) disease.

	Post-Induction PET N2-Status	
	N2-Negative (N=36; 47%)	N2-Avid (N=41; 53%)
Pathologic N2-Status		
N2-negative (N=31, 40%)	17 (47%)	14 (34%)
N2-persistent (N=46, 60%)	19 (53%)	27 (66%)

506 Total 77 with available post-induction PET and Pathologic N2 report.

507

508

509

510 Supplemental Table 3: Pre-induction and Post-induction PET N2-status for those with both pre-  
 511 and post-induction PET scans.\*

	Post-Induction PET N2-Status	
	N2-Negative (N=36; 47%)	N2-Avid (N=41; 53%)
Pre-Induction PET N2-status (N=73)		
N2-Negative (N=6, 8%)	5 (15%)	1 (2.5%)
N2-Avid (N=67, 92%)	28 (85%)	39 (98%)

512  
 513 \*N=73 patients had valid pre-induction and post-induction avidity reported on PET scans.

514  
 515  
 516  
 517  
 518  
 519  
 520  
 521

522 Supplemental Table 4: Univariable logistic regression models to investigate association between  
 523 factors and odds of pathologic N2-persistent disease.

Variable	OR	95% CI	P
Post-induction PET (N2-avid v N2-negative)	1.73	0.69, 4.33	0.2
Age at Surgery	0.98	0.94, 1.03	0.4
Male	0.83	0.37, 1.86	0.6
Smoking, yes	1.12	0.39, 3.23	0.8
Pack-years >30, yes	0.77	0.34, 1.73	0.5
Pulmonary comorbidity, yes	0.71	0.29, 1.73	0.4
Cardiac comorbidity, yes	0.99	0.40, 2.45	1
NIDDM, yes	0.72	0.17, 3.14	0.7
FEV1 (%)	1.00	0.97, 1.03	1
Diffusion (%)	1.00	0.98, 1.02	0.8
Adenocarcinoma, yes	2.89	1.09, 7.63	0.032
EGFR, present	0.91	0.21, 4.01	0.9
KRAS, present	0.70	0.24, 2.08	0.5
Type of mediastinal stage			
EBUS vs med-only	1.46	0.61, 3.50	0.4
EBUS +med vs med-only	5.89	0.65, 53.11	0.11
Others vs med-only	0.56	0.08, 3.79	0.6
Pre-induction PET SUV <sub>max</sub> N > 6.5 <sup>a</sup>	1.66	0.68, 4.04	0.3
Pre-induction PET SUV <sub>max</sub> T > 9.75 <sup>b</sup>	0.67	0.29, 1.56	0.3
Post-induction PET SUV <sub>max</sub> N > 3.3 <sup>c</sup>	4.58	1.04, 20.24	0.045

Post-induction PET SUVmax T> 5.0 <sup>d</sup>	0.36	0.13, 0.98	0.046
---	------	------------	-------

- 524 a. The median of 86 numerical SUVmax N was 6.5; 43/86 had SUVmax N >6.5  
525 b. The median of 93 numerical SUVmax T was 9.75; 46/93 had SUVmax T >9.75  
526 c. The median of 41 numerical SUVmax N was 3.3; 18/41 had SUVmax N >3.3  
527 d. The median of 69 numerical SUVmax T was 5.0; 33/69 had SUVmax N >5.0  
528

529 PET = positron emission scan; NIDDM = non-insulin dependent diabetes; FEV1 = Forced  
530 expiratory volume in one second; EGFR = Endothelial growth factor receptor; KRAS = Kirsten  
531 rat sarcoma viral oncogene homolog; EBUS = endobronchial ultrasound; SUVmax = Maximum  
532 standardized uptake values.

533

534

535

536

537 Supplemental Table 5: Locations of Distant Recurrences

538

<b><u>Location of Distance Metastases<sup>a</sup></u></b>	
Single Distant Site	37 (67)
Multiple Distant Sites	18 (33)
Brain	21 (38) <sup>b</sup>
Lung	18 (33) <sup>b</sup>
Bone	10 (18) <sup>b</sup>
Pleural	6 (11) <sup>b</sup>
Liver	7 (13) <sup>b</sup>
Adrenal	1 (2) <sup>b</sup>
Extra-Thoracic Lymph Nodes	9 (16) <sup>b</sup>

<sup>a</sup>55 total patients with distant metastasis is denominator

<sup>b</sup>>100% because of multiple site recurrences

539

540

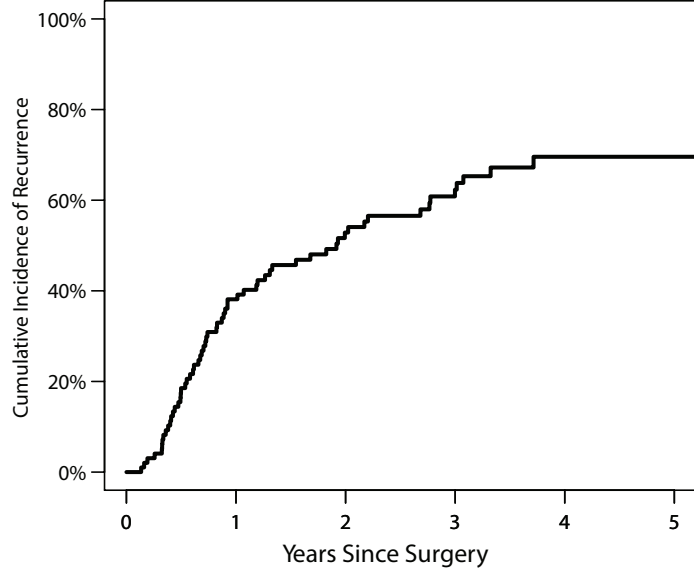
541 **FIGURE LEGENDS**

542 Figure 1. Overall survival (OS). A, Entire cohort: the 5-year OS was 39% (95% CI, 28%–56%).  
543 B, Postinduction PET N2 status: the 5-year OS for N2-negative was 43% (95% CI, 22%–83%)  
544 vs 39% (95% CI, 23%–64%) for N2-avid disease (p=0.251). C, Pathologic N2 status: the 5-year  
545 OS for N2-negative was 40% (95% CI, 25%–64%) vs 38% (95% CI, 21%–67%) for N2-  
546 persistent disease (p=0.936). D, Pathologic staging: the 5-year OS for <ypIIIA was 41% (95%  
547 CI, 25%–66%) vs 37% (95% CI, 21%–66%) for ≥ypIIIA (p = 0.791).

548  
549 Figure 2. Disease-free survival (DFS). A, Entire cohort: the 5-year DFS was 23% (95% CI,  
550 14%–37%). B, Postinduction PET N2 status: the 5-year DFS for N2-negative was 24% (95% CI,  
551 11%–51%) vs 24% (95% CI, 11%–54%) for N2-avid disease (p=0.867). C, Pathologic N2 status:  
552 the 5-year DFS for N2-negative was 34% (95% CI, 21%–56%) vs 9% (95% CI, 2%–45%) for  
553 N2-persistent disease (p=0.079). D, Pathologic staging: the 5-year DFS for <ypIIIA was 36%  
554 (95% CI, 22%–58%) vs 9% (95% CI, 2%–44%) for ≥ypIIIA (p=0.054).

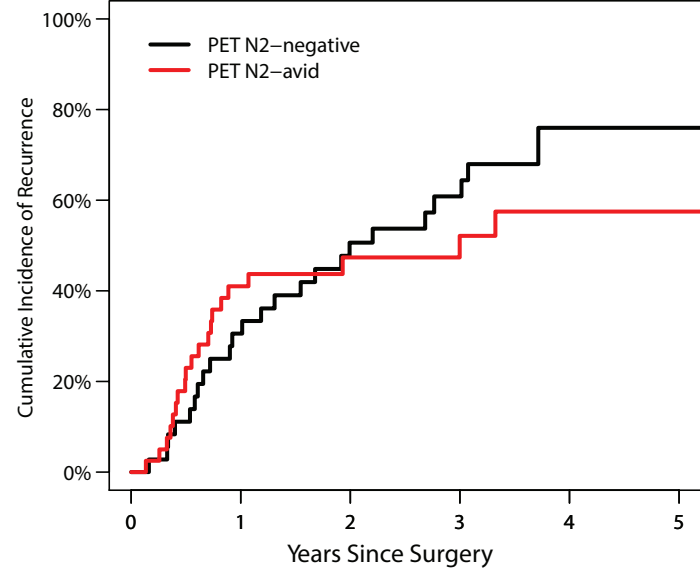
555  
556  
557  
558  
559 Supplemental Figure 1. Cumulative incidence of recurrence (CIR). A, Entire cohort: the 5-year  
560 CIR was 70% (95% CI, 60%–81%). B, Postinduction PET N2 status: the 5-year CIR for N2-  
561 negative was 76% (95% CI, 58%–99%) vs 58% (95% CI, 41%–80%) for N2-avid disease  
562 (Gray's test, p=0.571). C, Pathologic N2 status: the 5-year CIR for N2-negative was 59% (95%  
563 CI, 44%–79%) vs 80% (95% CI, 66%–96%) for N2-persistent disease (Gray's test, p=0.077). D,  
564 Pathologic staging: the 5-year CIR for <ypIIIA was 57% (95% CI, 41%–78%) vs 80% (95% CI,  
565 67%–96%) for ≥ypIIIA (Gray's test, p=0.049).

**A**



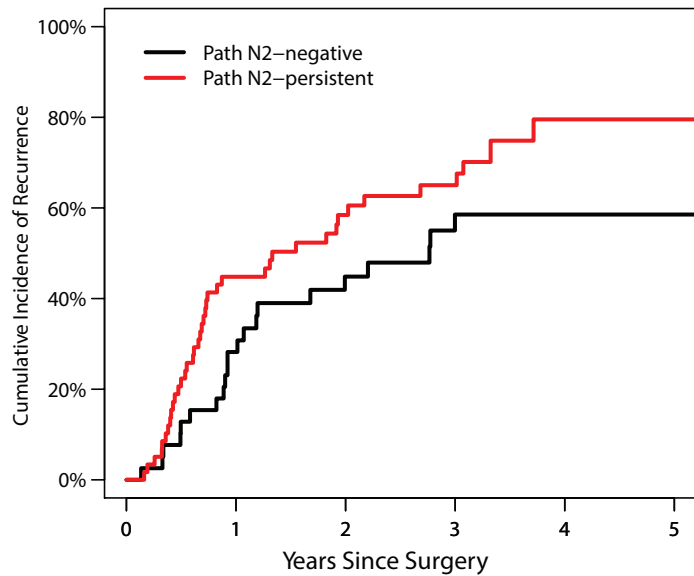
No. At Risk	100	58	37	24	10	7
CIR (%)	0	38	53	62	70	70
95% CI	–	(30,49)	(44,64)	(53,74)	(60,81)	(60,81)

**B**



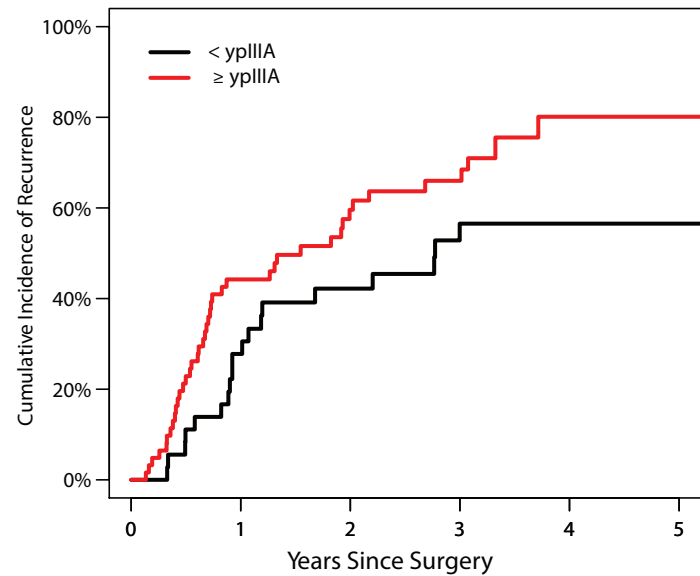
No. At Risk						
PET N2–negative	36	25	17	11	3	2
PET N2–avid	41	21	13	9	5	3
CIR (%)						
PET N2–negative	0	31	51	61	76	76
PET N2–avid	0	41	47	52	57	57
95% CI						
PET N2–negative	–	(18,50)	(36,71)	(46,81)	(58,99)	(58,99)
PET N2–avid	–	(28,60)	(33,67)	(37,73)	(41,80)	(41,80)

**C**



No. At Risk						
Path N2–negative	39	27	18	11	6	6
Path N2–persistent	61	31	19	13	4	1
CIR (%)						
Path N2–negative	0	28	45	58	58	58
Path N2–persistent	0	45	58	65	80	80
95% CI						
Path N2–negative	–	(17,47)	(31,64)	(44,79)	(44,79)	(44,79)
Path N2–persistent	–	(34,60)	(47,73)	(53,80)	(66,96)	(66,96)

**D**



No. At Risk						
< yplIIA	36	25	18	11	6	6
≥ yplIIA	64	33	19	13	4	1
CIR (%)						
< yplIIA	0	28	42	56	56	56
≥ yplIIA	0	44	60	66	80	80
95% CI						
< yplIIA	–	(16,48)	(28,63)	(41,78)	(41,78)	(41,78)
≥ yplIIA	–	(33,59)	(48,74)	(54,80)	(67,96)	(67,96)