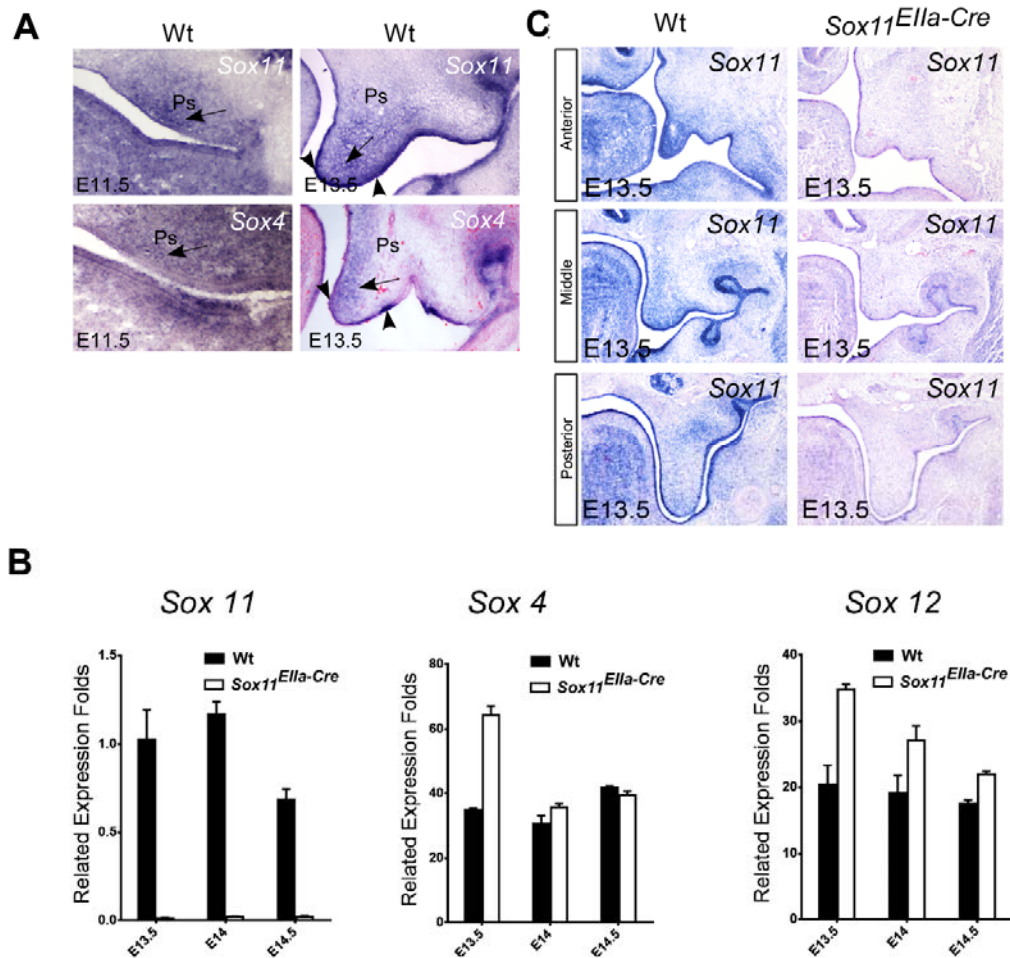


Supplement Figure 1



Supplemental Figure 1. *Sox11* deletion increased the expression of *Sox4* and *Sox12* in the developing palatal shelf. (A) In situ hybridization shows that the localizations of *Sox4* and *Sox11* transcripts overlap in both the epithelium (arrowheads) and the mesenchyme (arrows) of the palatal shelves at E11.5 and E13.5. Ps: palatal shelf. (B) Quantitative real-time RT PCR shows that *Sox11* is deleted completely in E13.5, E14.0 and E14.5 palatal shelves in *Sox11^{Ella-Cre}*, whereas the expression levels of *Sox4* and *Sox12* are increased. (C) In situ hybridization shows that *Sox11* is deleted completely in anterior, middle and posterior of palatal shelves in *Sox11^{Ella-Cre}*.