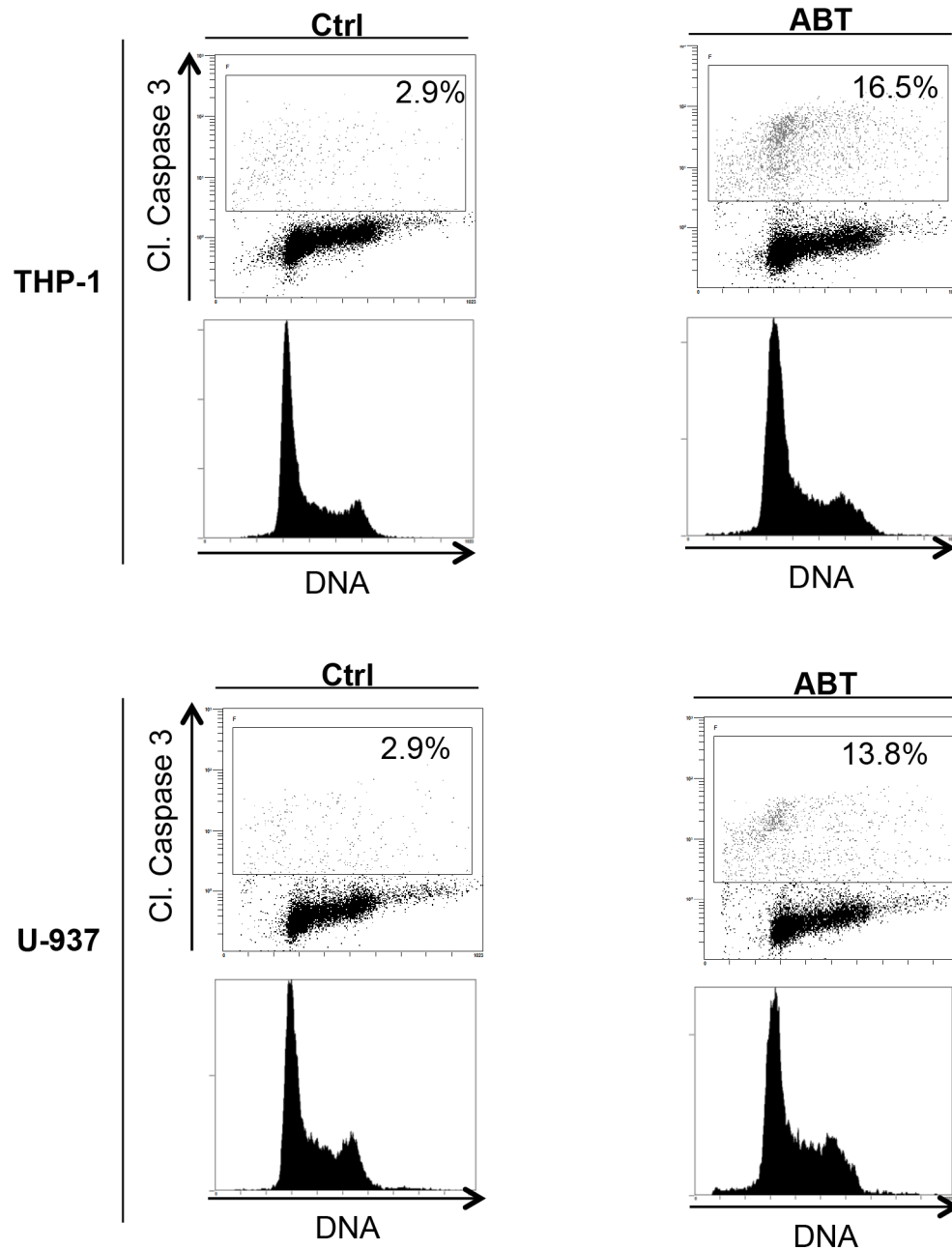
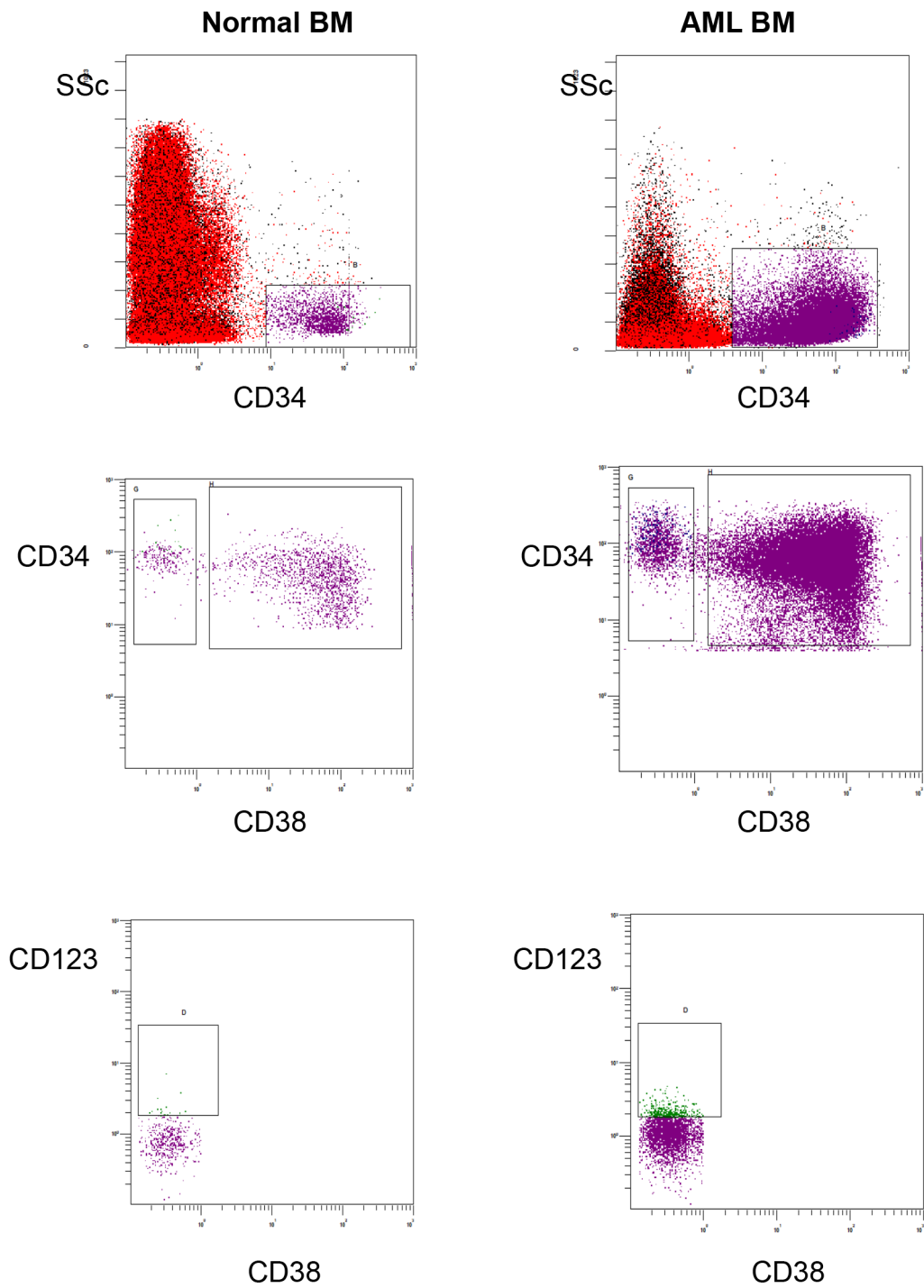


SUPPLEMENTARY FIGURES LEGENDS

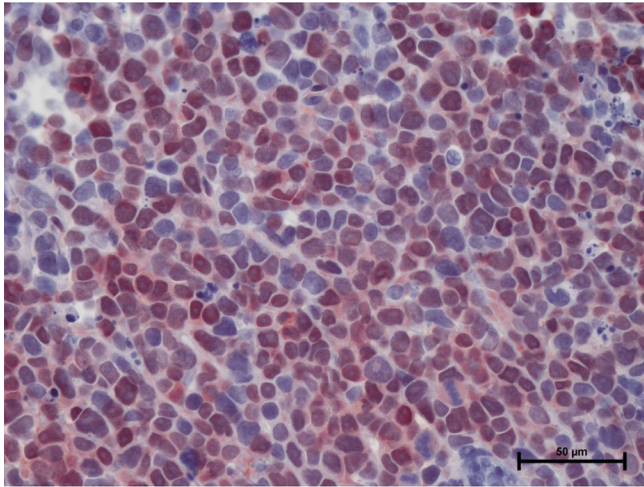


Supplementary Figure S1: ABT-263 induces apoptosis in G1 phase. THP-1 or U-937 cells were untreated or treated with 200 nM ABT-263. They were then fixed, permeabilized and stained with anti-cleaved caspase 3 antibody (Y axis) and Vibrant Violet Cycle probe (X axis). Cells were then analyzed by flow cytometry.

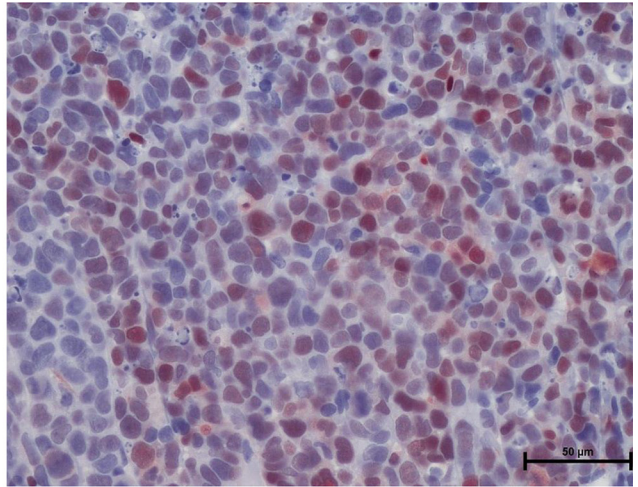


Supplementary Figure S2: Flow cytometry gating for CD34+ cell analysis in normal (left) and AML (right) bone marrow mononuclear cells.

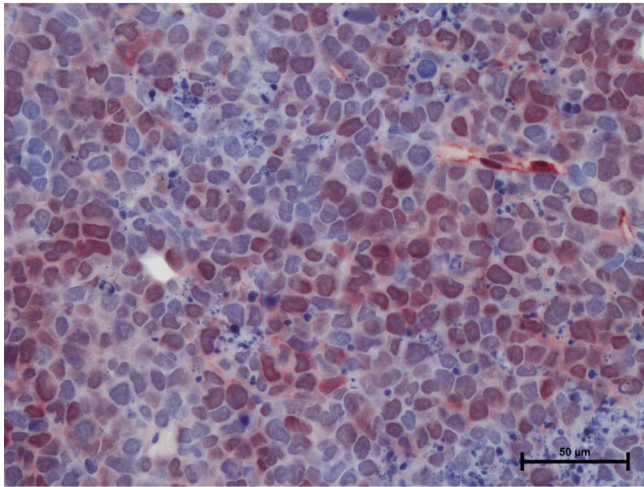
DMSO



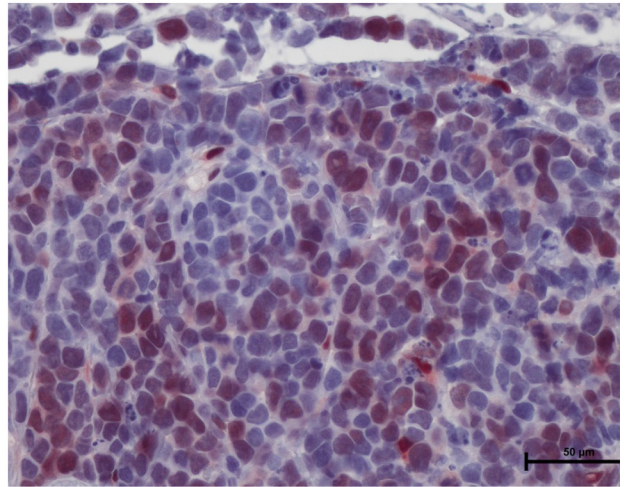
MEKI



ABT-263



ABT-263 + MEKI



Supplementary Figure S3: An immuno-staining with an anti-phospho-ERK1/2.