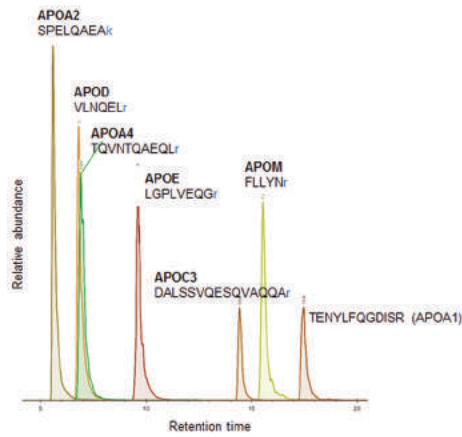
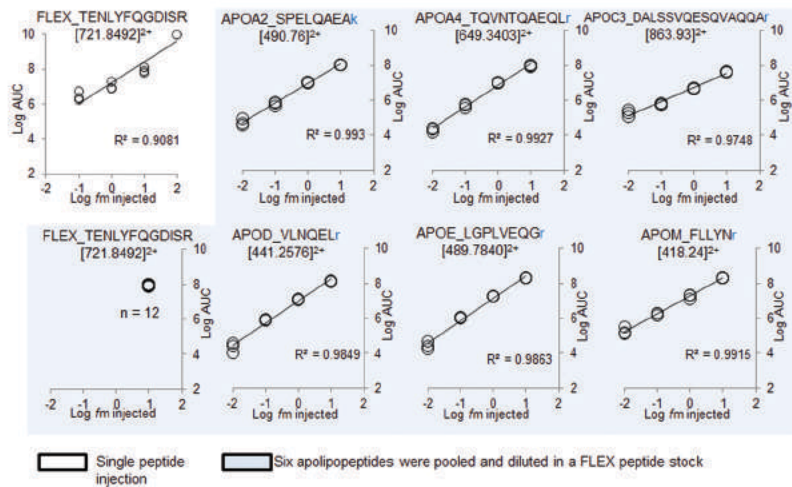
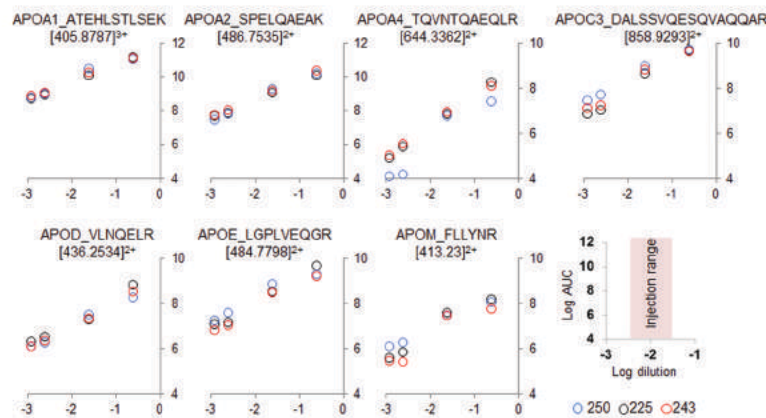


A**B****C**

Supplemental Figure 2. Serial dilution injections of synthetic and natural peptides used for absolute quantification of HDL apolipoproteins. (A) Extracted ion chromatogram for the seven synthetic peptides used for absolute quantification. Area under the curve corresponds to ten femtomoles on column. Lower case and blue indicate stable isotopically labeled Arg and Lys residues. (B) Standard curves for the various femtomoles spiked synthetic peptides. The blue graphs are the plots for the peptide in a standard mix containing all seven peptides prepared in a FLEX peptide stock solution. Three injection replicates were done for each femtomole injection for a total of 12 measurements of the FLEX peptide. (C) Standard curves for the corresponding light peptides in participant samples. Samples were diluted 1/40 for absolute quantification and mixed 1:1 (v:v) with the standard peptides for a final on-column spike-in amount of 10 fmol FLEX peptide (apoA-I), and 1 fmol of each remaining apolipoprotein peptide.